

How many watts are there for a 12 volt photovoltaic panel





Overview

By multiplying 20 amps by 12 volts, 240 watts is how big of a panel you would need, so we'd recommend using a 300w solar panel or 3 100 watt solar panels. How many watts a solar panel to charge a 12V battery?

You need around 400-550 watts of solar panels to charge most of the 12V lithium (LiFePO4) batteries from 100% depth of discharge in 6 peak sun hours with an MPPT charge controller. What Size Solar Panel To Charge 24v Battery?

.

How many Watts Does a 12V 100Ah battery need?

12V 100Ah batteries are some of the most common in solar power systems. Here are some tables with the solar panel sizes you need to charge them at various speeds: You need around 310 watts of solar panels to charge a 12V 100Ah lithium battery from 100% depth of discharge in 5 peak sun hours with an MPPT charge controller.

How many watts do I need to charge a 12V battery?

You need around 200 watts of solar panels to charge a 12V 120ah lead-acid battery from 50% depth of discharge in 5 peak sun hours with an MPPT charge controller. You need around 350 watts of solar panels to charge a 12V 120ah lithium battery from 100% depth of discharge in 5 peak sun hours with an MPPT charge controller.

How to choose a solar panel for a 12 volt battery?

Understanding Solar Panel Types: Familiarize yourself with different solar panel types—monocrystalline, polycrystalline, and thin-film—to choose the most efficient option for charging your 12-volt battery based on space, cost, and performance.

Can a 12V solar panel be used with a 24v battery?



If you purchase a 12v solar panel you should pair it with a 12v battery (a 12 volt lithium battery will work best with the 12 volt solar panels), a 12v inverter, and at least a 12v charge controller. A 24v solar panel should be used with a 24v battery bank, 24v inverter, and at least a 24v charge controller.

How many Watts Does a 12V solar panel need?

Winter use or all year round: $0.05 \times 7 = 0.35$ ah / w / week $19 / 0.35 = 54.3$ watts PV required As you can see there is a fair difference between winter and summer values in the UK. Please be sure to take this into account when calculating and using our 12v solar panel calculator.



How many watts are there for a 12 volt photovoltaic panel



What Voltage My Solar Panel Produces (Calculations + Examples)

Estimating Voc and Vmp Value For a Panel. 24 volt panel; $24 \text{ volts} \times 0.8 = 18 \text{ volts}$; $24 \text{ volts} + 18 \text{ volts} = 42 \text{ Voc}$; 24 volt panel; $24 \text{ volts} \times 0.2 = 4.8 \text{ volts}$; $24 \text{ volts} + 4.8 \text{ volts} = \dots$

Solar Panel Size Calculator: What Size Panel Do I Need?

You need around 200-400 watts of solar panels to charge many common 12V lithium battery sizes from 100% depth of discharge in 5 peak sun hours with an MPPT charge controller. You need around 150-300 watts of ...



Solar Photovoltaic Panel

A typical 12 volt photovoltaic solar panel gives about 18.5 to 20.8 volts peak output (assuming 0.58V cell voltage) by using 32 or 36 individual cells respectively connected together in a ...



50 watt Solar Panel: The Ultimate Guide (What Can It Power?)

In the real world, on average, a 50-watt solar panel will produce about 200 watts of DC power output or 16 amps @ 12 volts per day. Considering 5 hours of peak sunlight. ...



How Many Solar Panels Can a Charge Controller Handle?

In another post we explained why solar panel outputs are often lower than their rating. A 300 watt panel may only produce 270 watts due to dirt, shading, cloudy skies and other factors. This is ...



All You Need to Know about Amps, Watts, and Volts ...

The calculated amps from watts and voltage are 10 to 12 amps per hour for a 200-watt solar panel. The assumed sunlight per day for this calculation is 6 hours. There is no formula for it. To calculate volts or to ...



How to Choose a Correctly Sized MPPT Charge Controller

Sizing is one of the most challenging aspects of choosing any solar power system components. There are many tools out there, such as oursolar panel calculator, that can provide an overview of how many and what ...





1500 Watt Heater: What Size Inverter & Solar Panel Needed?

This is going to be a short but thorough guide on running a 1500-watt heater on solar power. You'd need 400 amp-hours with 12 volts or 200 amp-hours with 24 volts to run ...



[Beginners Guide to 12 Volt Solar Panels](#)

Let's say that you have a 100 watt 12 volt panel that will produce an average of about 30 amp-hours per day (based on an average sunny day). This means you would need three 100 watt solar panels or one 300 watt ...

12v Battery for Solar Panel (Best Charge for Each Amp)

12-volt batteries and solar panels are both common items in any arsenal. While some users may use 6v, 24v, or even 48v battery setups, 12v batteries are the most common ...



What size solar panel do I need to charge a 12v battery?

Result: You need about 120 watt solar panel to fully charge a 12v 50ah lithium (LiFePO4) battery from 100% depth of discharge in 6 peak sun hours. Read the below post to find out how fast you can charge your battery.



Understanding Solar Panel Voltage: A Comprehensive Guide

How much voltage does a 500-watt solar panel produce? It can produce around 20-25 amps at 12 volts. How much voltage does a 750-watt solar panel produce? A 750-watt ...



Understanding Solar Panel Voltage for Better Output

$60 \text{ cells} \times 0.5 \text{ volts} = 30 \text{ volts}$; $60 \text{ cells} \times 0.6 \text{ volts} = 36 \text{ volts}$; So, a typical 60-cell solar panel can generate a DC voltage between 20 and 40 volts. Just like that - you've calculated your solar panel voltage! Follow these steps, ...

What Size Solar Panel To Charge 100Ah Battery? (Calculator + Chart)

You just input how many volt battery you have (12V, 24V, 48V) and type of battery (lithium, deep cycle, lead-acid), and how quickly you want the battery to be charged, and the calculator will ...



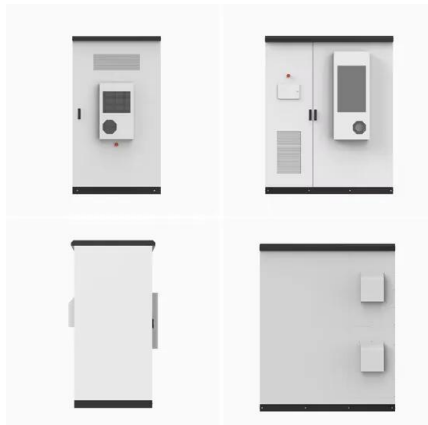
[Solar Panel Sizes and Wattage Explained](#)

How many Solar Watts do I Need to Power my Home? Over 179 (GW) of solar capacity is installed nationwide and it's capable of powering roughly 33 million homes. While it takes roughly 17 (400-watt) panels to power ...



[Solar Panel Amps Calculator](#)

How Many Amps Does a 100-Watt Solar Panel Produce? this voltage often falls within the range of 18 to 36 volts, but it can vary based on the panel's design and intended use. Nominal Voltage Voc Vmp A 450W solar ...



How to Test Solar Panels: Output, Amps & Watts

At this point in the day, the clouds had rolled in, so my watt meter measured an output of 24.4 watts from my 100 watt solar panel. As you can in the photo, you can also use a power meter to measure solar panel ...

[Solar Panel Sizes and Wattage Explained](#)

For example, a standard PV cell's dimensions in length and breadth are 156 mm respectively = $156/0.1 = 15.6$ cm. Thus, the standard size of a solar PV cell is approximately 15.6 cm by 15.6 cm. Cross-reference: How to ...



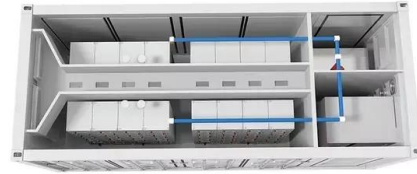
Renogy 160-Watt 12-Volt Monocrystalline Solar Panel Review

Monocrystalline solar panels are great in the aspects of efficiency and compactness, and the Renogy 160-watt 12-volt panel is a perfect example of the this. With a ...



Reduce Solar Panel Voltage (Volts + Calculations)

There are situations where you would want to reduce the output (voltage) of a solar panel, such as reducing a 12-volt panel to work on a 6-volt battery. In this blog, we ...

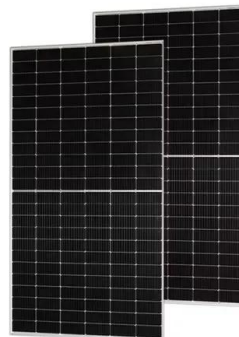


How Many Watts Solar Panel to Charge 12 Volt Battery: ...

4 ???· Discover how to efficiently charge a 12-volt battery with the right wattage from solar panels in our comprehensive guide. Learn crucial calculations based on battery capacity, daily ...

MPPT Solar Charge Controller - Working, Sizing and ...

E.g., a 100-watt/12-volt panel outputs about 5.5 amps at 18 volts in peak conditions. Using a PWM controller will reduce the power to about 14.5 volts at 5.5 amps or 80 watts ($14.5V \times 5.5a = 80 \text{ watts}$). There are restrictions about ...



How Many Solar Panels Do You Need to Charge a 12 Volt Battery?

A 12-volt battery requires a charging voltage of around 14 volts to fully charge. When choosing solar panels for a 12-volt battery, you must make sure that the panels have a ...



Solar Charge Controller Guide , All You Need to Know

Suppose we have a solar array which provides 800 watts of power while operating at 12 volts. In this case, we could readily calculate the amps output by such an array ...

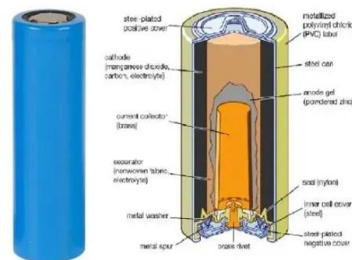


40 Watt Solar Panel: Everything You Need To Know

How many amps does a 40-watt solar panel produce. To calculate the value of amps or current use this formula (Amps = Watt/Volts) Under ideal sunlight conditions, a 12v ...

Solar Panel Output Calculator

12 kWh: 200 watt: 800 Wh: 24 kWh: 250 watt: 1 kWh: 30 kWh: 300 watt: 1.2 kWh: 36 kWh: 370 watt: 1.4 kWh: 44 kWh if you're not on a budget and wanna squeeze every single watt of solar power then an MPPT ...



- Voltage range: 691.2-947.2V
- >6000 cycles (100%DOD)
- Rated battery capacity: 216KWH (customizable)
- EMS communication: 4G/CAN/RS485

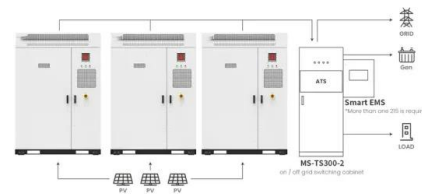
200 Watt Solar Panel Guide , All You Need to Know

The Photovoltaic effect: On average, the 200 watt - 12-volt solar panel would be able to produce 60 to 100 Amp hours per day. If the solar panel is able to get direct ...



[Beginners Guide to 12 Volt Solar Panels](#)

This is a beginners guide to different 12 volt solar panels and what to consider when shopping for your solar power systems. 30 amp-hours per day (based on an average sunny day). This means you would need three ...



Application scenarios of energy storage battery products



What Size Solar Panel To Charge 24v Battery? (incl. Calculator)

You need around 490 watts of solar panels to charge a 24V 100ah Lithium (LiFePO4) battery from 100% depth of discharge in 6 peak sun hours. Related Post: How ...

Contact Us

For catalog requests, pricing, or partnerships, please visit:
<https://www.vdbconstruction.co.za>