

# How many watts per meter are there in a photovoltaic panel





## Overview

---

Usually, the typical amount can be 1,000 watts of sunlight per square meter of the panel. How many Watts Does a solar panel produce?

Watt (W) = the amount of power the solar panels are capable of producing  
Kilowatt (kW) = 1,000 Watts  
Watt-hour (Wh) = the amount of watts solar panels produce over an hour  
How big are solar panels?

You should note that when this guide talks about a solar panel's size, it's referring to its physical measurements - its dimensions.

What is solar panel watts per square meter (W/M)?

Solar panel watts per square meter (W/m) measures the power output of a solar panel based on its size. Compare solar panels to see which generates most electricity per square meter. A higher W/m value means a solar panel produces more power from a given area. This can help you determine how many solar panels you need for your energy needs.

What is solar panel wattage?

Solar panel wattage refers to the amount of power a solar panel can generate under standard test conditions (STC). Measured in watts, solar panel wattage refers to the maximum power output a solar panel can produce when exposed to sunlight.

How much wattage does a solar PV system have?

The wattage of the solar panels, in this case, is crucial in determining the overall capacity of the system. Your system may consist of 20x330W panels, resulting in a 6,600W (6.6kW) solar PV system. A solar photovoltaic (PV) system's size or capacity is the maximum amount of electricity it can produce.

How do you calculate wattage of a solar panel?



Wattage is the output of solar panels that is calculated by multiplying the volts by amps. Here, the amount of the force of the electricity is represented by volts. The aggregate amount of energy used is expressed in amps (amperes). Output ratings on most solar panels range between 250 watts to 400 watts. 1. Number of Solar Cells.

Do solar panels have a higher wattage?

A solar panel's physical size tends to strongly correlate with its wattage. As a general rule, larger solar panels have higher power output than smaller ones. This is because larger solar panels have more surface area, meaning they can accommodate more solar cells.



## How many watts per meter are there in a photovoltaic panel

- LiFePO<sub>4</sub>
- Wide temp: -20°C to 55°C
- Easy to expand
- Floor mount&wall mount
- Intelligent BMS
- Cycle Life:≥6000
- Warranty :10 years



### Solar Panel Output and Wattage Explained (2024 Guide)

A 400-watt solar panel can produce 400 watts of power under standard test conditions (STC). However, a 400W panel will rarely produce exactly 400 watts in real-world ...

### Monocrystalline vs Polycrystalline Solar Panels

To work out how much electricity a solar panel will generate for your home we need to multiply the number of sunshine hours by the power output of the solar panel. For example, in the case of ...



### How much energy do solar panels produce for your home?

1.44 x 30 = 43.2 kWh per month; 3. Solar panel output per square metre. The most popular domestic solar panel system is 4 kW. This has 16 panels, with each one: around 1.6 square ...

[Solar Power Per Square Meter Calculator](#)

2. The power of the panel in Watt peak (Wp)  
Solar panels are typically marketed with a "watt peak" number. This is the amount they should produce in ideal conditions. Our ...

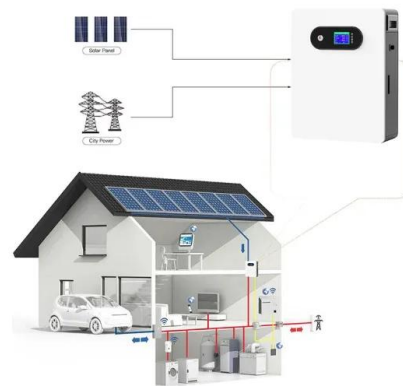


### [Solar Panel Sizes and Wattage Explained](#)

But even today there is no definite answer for how large solar panels are, because the answer varies. solar panel size per kW and watt calculations are estimates that may vary depending on panel efficiency, ...

### [Solar Panel Watts Per Square Meter Explained](#)

Watts per square meter helps you make informed decisions when choosing and installing solar panels. How to Calculate Solar Panel Watts per Square Meter. Calculating watts per square ...



### **Guide to Solar Panel Sizes & Dimensions (November ...**

Solar panel sizes and wattage range from 250W to 450W, taking up 1.6 to 2 square metres per panel. One of the most important things to consider when getting solar panels for your home is the specific solar panel ...



## How Many Solar Panels Do I Need To Power a House?

A peak sun hour is when the intensity of sunlight (known as solar irradiance) averages 1,000 watts per square meter or 1 kW/m<sup>2</sup>. In the US, the average peak sun hours range from over 5.75 hours per day in the ...



## How Much Energy Does A Solar Panel Produce? , EnergySage

Most home solar panels that installers offer in 2024 produce between 350 and 450 watts of power, based on thousands of quotes from the EnergySage Marketplace. Each of ...

## Solar panel output: How much electricity do they produce?

A solar panel's output is expressed in watts (W). The higher the wattage of a solar panel, the more electricity it can produce. One way you can do this is by checking the ...



## Solar Panel Output Voltage: How Many Volts Do PV Panel ...

It's not all that easy to find the solar panel output voltage; there is a bit of confusion because we have 3 different solar panel If you know the number of PV cells in a solar panel, you can, by ...



### How Much Power Do Solar Panels Produce Per Square Meter?

How much energy does a solar panel create per square meter? The average solar panel has an input rate of roughly 1000 Watts per square meter, while the majority of solar panels on the ...



### Guide to Solar Panel Sizes & Dimensions (November ...

The exact cost you'll pay for a panel will vary depending on many factors such as the quality, type, brand, supplier, and installation complexity. One way you can reduce costs today is by seeing if you qualify for ...

### Solar Rooftop Calculator: How Many Solar Panels Can ...

Now, by average solar panel wattage per square foot, we can put a 10.35kW solar system on an 800 sq ft roof. This is how many solar panels you can put on this roof: If you only use 100-watt solar panels, you can put 103 100-watt solar ...



### Solar Panel Wattage & Output Explained

The solar panel output rating of the average residential panel is between 250 and 485 watts, but commercial modules can have a higher solar panel rating. For example, ...



### How Much Solar Power Can My Roof Generate?

Let's walk through how to calculate the amount of solar power your roof can generate based on its size, orientation, and angle--as well as the solar panels you install.



### Solar Panel Ratings Explained

A "Solar Irradiance" of 1000 Watts per square meter ( $W/m^2$ ) Grid 12V Solar Power System Check Price. Solar panel Current Ratings: Solar panels come with two Current (or Amperage) ratings that are measured in ...

### **How Much Power (Watts) does a Solar Panel Produce?**

Solar panel output per square meter. The most common domestic solar panel system is 4 kW. And it has 16 panels, each of which is about 1.6 square meters ( $m^2$ ) in size. They are rated to ...



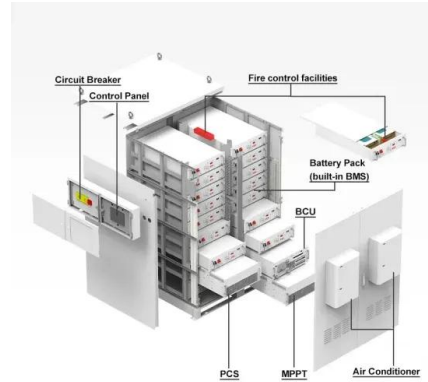
### **How to Understand Solar Panel Watts Per Square Meter**

For instance, if the combined size of the 20 panels is 30 square meters, the watts per square meter would be 200 (6,000 watts / 30 square meters). By calculating the ...



## Most efficient solar panels 2024 -- Clean Energy Reviews

The race to produce the most efficient solar panel heats up. Until mid-2024, SunPower, now known as Maxeon, was still in the top spot with the new Maxeon 7 ...



## How much electricity do solar panels produce? [UK, 2024]

The average solar panel output per m<sup>2</sup> is 186kWh per year. Solar panels are usually around 2m<sup>2</sup>, which means the typical 430-watt model will produce 372kWh across a year. A solar panel system will need space on ...

## Solar Panel Sizes And Wattage , Sizing, Dimensions & Weight

Watt (W) and kilowatt (kW): a unit used to quantify the rate of energy transfer. One kilowatt = 1000 watts. Solar panels' rating in watts specifies the maximum power ...



## How Many Solar Panels Do You Really Need for UK Homes?

Number of Panels \* Power per Panel (Wp) = Installation Power (Wp) Example Calculation: For instance, if each solar panel has a power rating of 300 Wp and your installation comprises 6 ...



### Solar Panel Watts Per Square Meter Explained

Watts per square meter (W/m) is an important metric for solar panels. It shows how well a panel can generate electricity from sunlight. By knowing the W/m value, you can: Understand how much power a panel can produce; Compare ...



### Average Solar Panel Output Per Day: UK Guide

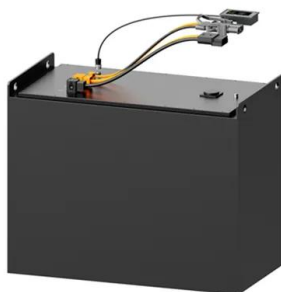
In the above section's example of 2.4 kWh per day (i.e., two solar panels generating 300 watts per hour, multiplied by four hours of sunlight), a system like that (with ...

### Solar Panel Dimensions Sizes and Wattage

Solar panel dimensions is an essential criterion to consider when planning a photovoltaic solar installation. So, how big is a solar panel? How big is a standard solar ...



**1075KW HH ESS**



### **Solar Panel kWh Calculator: kWh Production Per Day, ...**

In a 5.50 peak sun hour area, a 300-watt solar panel will produce 1.24 kWh per day, 37.13 kWh per month, and 451.69 kWh per year. Example: What Is The Output Of a 100-Watt Solar Panel? Let's look at a small 100-watt solar panel. ...



## Contact Us

---

For catalog requests, pricing, or partnerships, please visit:  
<https://www.vdbconstruction.co.za>