

# How much does a 260 watt photovoltaic panel weigh





## Overview

---

How much does a 60 cell solar panel weigh?

Every brand of solar panels has slight variations in their dimensions and weights, according to manufacturing material. Although the weight of different brands of solar panels varies, an average 60 cell solar panel weighs about 40 pounds. Other important factors are wattage and voltage/current requirements.

How much do solar panels weigh?

Alright, here are 6 sampled solar panels with the wattages, dimensions, total weight, and weight per square foot (weight per square foot is calculated by dividing the total weight by solar panel roof area): As we can see, 100W solar panels weigh about 10-15 lbs, 200W solar panels about 20-30 lbs, and 400W Tesla roof panel weighs 51.8 lbs.

How many Watts Does a 60 cell solar panel produce?

Sixty-cell solar panels most commonly produce 270 to 300 watts of energy. Seventy-two-cell solar panels measure 80 inches long by 40 inches wide. Like 60-cell solar panels, the normal depth can be between 1.4 and 1.8 inches. Seventy-two-cell solar panels have one additional row of photovoltaic cells compared to 60-cell solar panels.

How many Watts Does a solar panel power?

The wattages of solar panels can range greatly. While some solar panels power select appliances or RVs, others are powerhouses, and others can power industrial buildings. These solar panels differ in both size and weight. On average, a solar panel can provide 15 watts per square foot.

How much does A 72-cell solar panel weigh?

72-cell solar panels weigh around 61.73 pounds. As you may recall, these larger panels usually provide 350 to 400 watts. The weight of a solar panel per



unit is an important consideration when deciding which size is best for your home, which we will discuss further in a later section.

How much does an RV solar panel weigh?

RV solar panels are generally rated at 100-150 watts and are smaller and lighter than residential solar panels. In general, the average rigid solar panel used in RV solar systems is rated at 100 Watts and weighs about 15lbs.



## How much does a 260 watt photovoltaic panel weigh

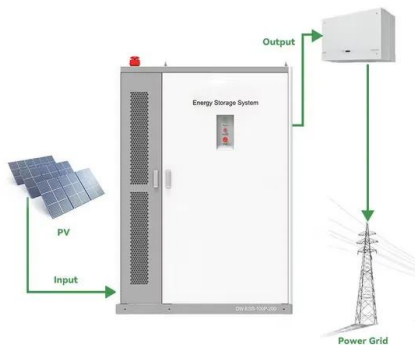
### 150 watt Solar Panel: How Many Amps (Specifications, ...



A 12v 150 watt solar panel will produce about 18.3 volts and 8.2 amps under ideal sunlight conditions. (inc. 1kw/m<sup>2</sup> of sunlight intensity, no wind, and 25 o C temperature). The above values are based on DC (Direct current) ...

### How Much Do Solar Panels Weigh? A Complete ...

In general, a 60 cell residential solar panel weighs between 35lbs and 50 lbs (16-22 kg) and can produce between 300 and 400 watts of power. However, a 36 cell flexible (thin-film) solar panel which can produce ...

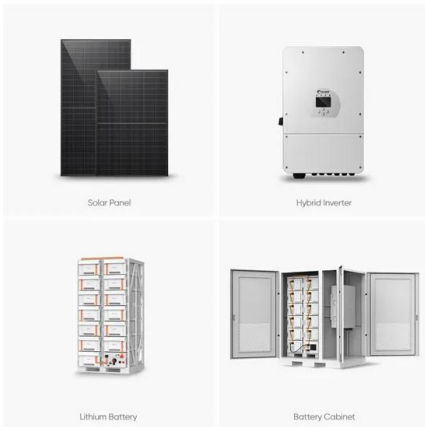


### Solar Panel Size and Weight: What You Need to Know

Learn why solar panel size and weight are crucial for your roof's support, While most residential systems typically consist of 15 to 19 panels, covering about 260 to 340 square feet of roof space, here are some ...

### How Much Do Solar Panels Weigh? 1.30 - 2,608.7 lbs ...

If we know that 1 square foot of a solar panel weight 2.25 lbs and has a rated wattage of 17.25 watts, we can calculate the how much any solar panel (100W, 200W, 300W, 400W, 500W) and any solar system (3kW, 5kW, 10kW, 20kW, ...



### Solar Panel Size & Weight: A Comprehensive Guide

How much does a 300 watt solar panel weigh? They generally consist of 60 or 72 solar cells (or 120-144 half-cut solar cells) and can produce 300 to 400 watts of power. In general, residential solar panels can weigh as low as 35 lbs (kg) and ...

### Guide to Solar Panel Sizes & Dimensions (November 2024)

The standard solar panel weight in the UK is 18 - 21kg for residential settings and 22 - 30kg for commercial settings. These include the weights of the frames and mounting ...



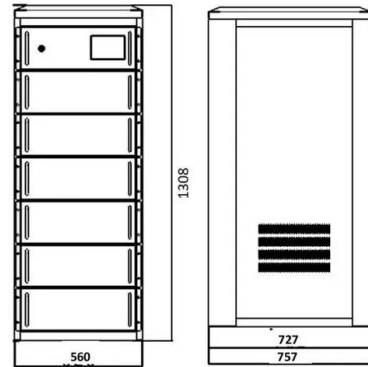
### Solar Panel Size And Weight: A Comprehensive Guide

Solar panel weight varies by manufacturer, but standard 60 cell solar panels weigh about 40 pounds. Commercial solar panels weigh around 50 pounds. Frames and mounting equipment for both panels



### Bisol Premium BMO 260 Watt Solar Panel Module

The Bisol Premium BMO 260 Watt Solar Panel Module has a maximum output of 260 watts. Efficiency is an important thing to look at when comparing solar panels, since it affects how ...



### Solar Panel Dimensions & Weight in Australia: The Ultimate Guide

The variation in output will usually not change the size of a single solar panel. The standard size of a 250W solar panel is approximately 1.7m x 1.0m, with slight variations ...

### [How Much Do Solar Panels Weigh?](#)

Most homes use a 5 kW to 15 kW solar panel system, or a 5,000-watt to 15,000-watt solar panel system. Here's how much the average solar panel array weighs based on total wattage: 5 kW ...



### Solar Panel Size & Weight: The Ultimate Guide 2024

To determine the size of your solar system, you can use a solar power calculation formula based on the typical output of solar panels, usually ranging from 250 watts ...





### Solar Panel Weight

Understanding how much does a solar panel weigh is crucial for various reasons, from installation to structural considerations. In this comprehensive guide, we'll delve into the world of solar ...



### Suniva OPT260-60-4-100

Suniva 260 Watt Solar Panel. Model: OPT260-60-4-100: Series: Optimus: Manufacturer: Suniva: Mechanical. Type: Mono: Dimensions: 65.08" x 38.66" x 1.81" Weight: 41.22: Frame: Silver ...

### How big are solar panels? Solar panel size and weight

We'll help you understand solar panel size, solar panel weight, and whether your roof can support your panels. Open navigation menu The total system size is also ...



### How Much Does a Solar Panel Weigh? [All You Need To Know]

So how much does a solar panel weigh? A solar panel typically weighs between 30 and 40 pounds, depending on the size and type of solar panel. The most common type of ...



### How Much Does a Solar Panel Weigh? - Solar Panel Facts

How much does a solar panel weigh? If you're using a regular panel for homes, expect it to weigh approximately 40 lbs. However, depending on the solar panel manufacturer, ...



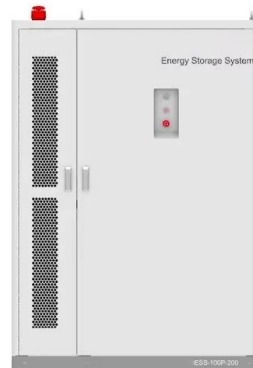
### How Much Does an Average Solar Panel Weigh?

For a 6 KW solar panel installation consisting of 20 panels, the weight of just the panels will be close to 800 pounds. Here we are basing our calculations on an average thin-film panel ...



### Solar Panel kWh Calculator: kWh Production Per Day, ...

In a 5.50 peak sun hour area, a 300-watt solar panel will produce 1.24 kWh per day, 37.13 kWh per month, and 451.69 kWh per year. Example: What Is The Output Of a 100-Watt Solar Panel? Let's look at a small 100-watt solar panel. ...



### How Many kWh Does A Solar Panel Produce Per Day? Calculator ...

Now you can just read the solar panel daily kWh production off this chart. Here are some examples of individual solar panels: A 300-watt solar panel will produce anywhere from 0.90 to ...





### Solar panel sizes and wattages , The Independent

Measured in watts, solar panel wattage refers to the maximum power output a solar panel can produce when exposed to sunlight. (such as 72-cell panels) can weigh as ...



### How Much Do Solar Panels Weigh? (Chart)

How big is a 400-watt panel? A panel size depends on its material, efficiency, and brand. But a 400W panel can be 75" x 45" on average. LG's 400W panels are 80" x 40". SunPower's 400W panels are 66" x 39". How ...

### 250-watt Solar Panels: What to Know (2024) , ConsumerAffairs®

While 50-watt or 100-watt panels could save you some money upfront, 250-watt solar panels can make much more efficient use of the space on your roof or property. How ...



### Home Energy Storage (Stackble system)



- High Efficiency
- Easy installation
- Safe and Reliable
- Perfect Compatibility

- Product Introduction**
- Scalable from 10kWh to 50kWh
  - Self-Consumption Optimization
  - Integrated with inverter to avoid the compatibility problem
  - LFP battery, safest and long cycle life
  - Backpack design, effortless installation
  - Capable of high-powered
  - Emergency-Backup and Off-Grid Function

### 400-watt Solar Panels Explained: Everything You Need to Know

Most 400-watt panels measure around 6.5 feet by 3.3 feet and weigh approximately 50 pounds. This makes them manageable for installation on various surfaces, ...



### How Much Does a Solar Panel Weigh?

A 72-cell, 300-watt solar panel will therefore weigh more than a 60-cell, 250-watt solar panel. So, the solar panel installation on your rooftop would have to support the extra weight. A 72-cell, 300-watt solar panel has a ...



### **How Much Does a Solar Panel Weigh? The Weight Explained**

It's key to understand how much does a solar panel weight and to be able to use a solar panel weight calculator. This helps figure out if different installation spots are right for ...

## **Contact Us**

---

For catalog requests, pricing, or partnerships, please visit:  
<https://www.vdbconstruction.co.za>