

How much does it cost to transport electric power wind blades





Overview

It costs roughly \$100,000 and \$150,000 to move a fan blade from a port to a wind farm. However, as blades get longer and heavier, they will require extra work and money to transport. How much does it cost to transport wind turbine blades?

To transport turbine blades from place of manufacture or shipping port to the required site, such as a wind farm will realistically cost in the region of up to \$150,000. But as blades get evermore larger so will the cost of transportation. Can wind turbine blades be recycled?

Wind turbines come with a pile of large, dangerous blades.

What is the cost to transport a wind turbine?

For short-haul wind turbine transports, average charges are roughly \$30,000 to \$40,000 per turbine. Long-haul wind turbine shipments can cost more than \$100,000.

How to transport a wind turbine blade?

It takes a lot of planning on the side of your logistics company to transport one big wind turbine blade. A wind turbine blade trailer may need the use of a multi-axle trailer to transport such long, hefty blades. This will be the wisest option since a commercial wind turbine can take up to seven rigs just to complete a delivery.

How are wind turbine blades delivered?

With wind turbines, it must be delivered to the wind farm site from the port of entry or the manufacturer. Some parts even need to be disassembled for shipping. However, the blades must be delivered in one piece. On average wind turbine blades' size are 116 feet in length. They are still manageable for truck transportation at this length.

How much does a 12 MW wind turbine cost?



The most powerful 12 MW wind turbine costs up to \$400 million to manufacture and install. Costs for utility-scale wind turbines can be broken down into three categories: manufacturing, transport and installation, and operations and maintenance. Researchers are constantly working to drive down the costs.

How many blades can a wind turbine produce a year?

This model imagines a wind turbine factory producing 1,000 blades per year. However, users can easily edit this value to represent their specific needs in the model for a wind turbine blade cost.



How much does it cost to transport electric power wind blades

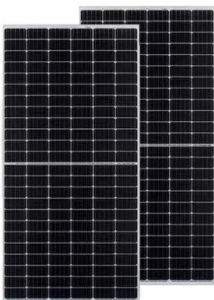


Shipping wind turbines and blades - Global network, DSV

With this global network and set-up, you have access to the know-how and vessels you need to move and ship your wind turbines wherever they need to be safely and efficiently - whether that's an individual wind turbine, a blade or a ...

How Much Do Wind Turbines Cost? (Calculations + Efficiency)

The other consideration for VAWTs is that they don't need to be wind direction-orientated to work as their blades can capture wind blowing from any direction. they are offset against ...



[Wind Turbine Blade Sizes & Transport: A Guide](#)

How Much Does It Cost to Transport a Wind Turbine Trailer? Hauling wind components is a hazardous and time-consuming task. A significant factor in shipping turbines ...

Wind Turbine Transport: Tips for Easy, Breezy Shipping

How Much Does It Cost To Ship A Wind Turbine? The cost to ship a wind turbine can vary based on the distance it has to travel and other logistical factors. For short ...



Wind Turbine Blades: How Composites Power Green ...

This arrangement converts the powerful kinetic energy of wind into an electric current that can then be added to the power grid. The blades of wind turbines have grown increasingly longer as the technology has developed. of the ...

How Much Energy Does Wind Power Really Produce?

By 2014, the wind industry in the United States could generate more power at a lower cost by utilising more giant wind turbines with longer blades to capture faster winds at ...



[Wind turbine blades: how much longer?](#)

LM Wind Power (of Kolding, Denmark) has installed its 73.5m blades at a 6MW wind turbine in Carnet, France, for Alstom (of Levallois-Perret, France) The glass/polyester blades feature the ...



(PDF) The Effect of the Number of Blades on the Efficiency of A Wind ...

A wind turbine blade is an important component of a clean energy system because of its ability to capture energy from the wind. The power that a wind turbine extracts ...



Wind turbine blade sizes and transport: A guide

For short-haul wind turbine shipments, average charges are roughly \$30,000 to \$40,000 per turbine. At a much higher price point, long-haul wind shipments can cost more than \$100,000.

Costs of repair of wind turbine blades: Influence of technology ...

According to Carrol et al., 13 average failure rate of an offshore WT is 8.3 failures per turbine per year. That includes 6.2 minor repair (costs below 1000 EUR), 1.1 major ...



Wind blades generate how much electricity per revolution?

Taking a 1500-kilowatt fan unit as an example, the wind blades are about 35 meters long (about 12 stories high). It takes about 4-5 seconds for the wind turbine to make one revolution (but at ...



How Much CO2 Does A Wind Turbine Produce?

A wind project, also known as a wind farm, is a collection of wind turbines that are clustered together and act similarly to a power plant, providing electricity to the grid. The Frontier ...



No blades! A pole-shaped wind turbine, Vortex Bladeless, ...

Owing to its simple shape and light weight of 15 kg, its material costs are reduced. It does not require a nacelle or blades that are the most expensive parts of a ...



How to transport Wind Turbines: Detailed Guide

Cost of Transporting Wind Turbines. The cost of transporting wind turbines varies significantly based on distance and logistical complexities: Short-Haul Shipments: Typically range from \$30,000 to \$40,000 per turbine. Long-Haul Shipments: ...



Wind Turbine Equipment Transportation Services

Chris Bennett (HH) Ltd can offer cost-effectiveness and reliability when it comes to the transportation of blades and tower sections. Our range of abnormal load trailers means that we have a flexibility to deliver to the remotest of areas.



Shipping wind turbines is not a breeze

Buoying the industry. Over the past decade, the United States wind industry has invested around \$143 billion in new development. Domestic wind capacity additions in 2019 ...



- ✓ IP65/IP55 OUTDOOR CABINET
- ✓ OUTDOOR MODULE CABINET
- ✓ OUTDOOR 5G BASE STATION CABINET
- ✓ WATERPROOF

Will More Blades Help a Wind Turbine Spin Faster?

Rural wind turbines effectively died out after the extension of power lines across the United States, and wind power became a thing of the past. Wind power recently started ...

Wind explained Electricity generation from wind

How wind turbines work. Wind turbines use blades to collect the wind's kinetic energy. Advances in wind-energy technology have decreased the cost of wind electricity ...



The Science Behind Wind Blades and How They Work

How Wind Blades Work. Wind turbine blades transform the wind's kinetic energy into rotational energy, which is then used to produce power. The fundamental mechanics of ...



Transporting Wind Turbine Blades: How To Do It Correctly

Higher Transportation Costs. It costs roughly \$100,000 and \$150,000 to move a fan blade from a port to a wind farm. However, as blades get longer and heavier, they will ...

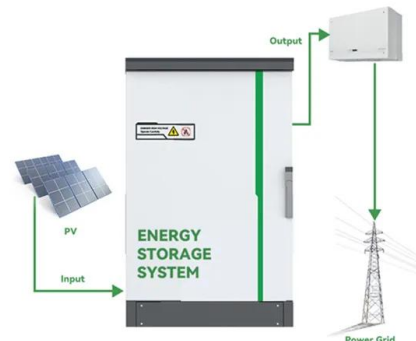


Wind Turbine Blade Technology: Designing for Efficiency

Wind turbine blades are the primary components responsible for capturing wind energy and converting it into mechanical power, which is then transformed into electrical energy through a generator. The fundamental goal of blade design is ...

How Much Do The Blades Of A Wind Turbine Weigh?

Wind turbines generate energy at a lower cost due to economies of scale, therefore larger turbines can generate more electricity. Components for wind turbines are frequently carried by ...



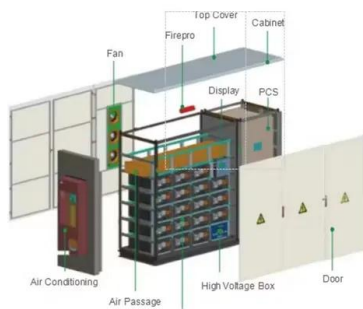
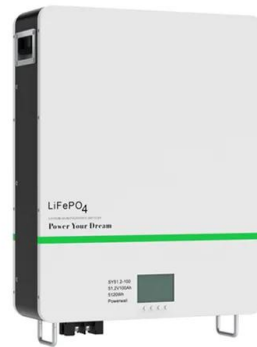
[How Much Does a Home Wind Turbine Cost?](#)

According to the American Wind Energy Association (AWEA), a wind turbine's initial cost can range from \$2,000 to \$5,000 per kilowatt of power capacity. Thus, if you want the turbine to provide all of your electricity, you ...



Cost Analysis: How Much Do Commercial Wind Turbines Really Cost?

Wondering how much do commercial wind turbines cost? A utility-scale wind turbine costs between \$1.3 million to \$2.2 million per MW. we hope to present a complete ...



How Much Do Wind Turbines Cost? (2024) , Today's ...

The most powerful 12 MW wind turbine costs up to \$400 million to manufacture and install. Costs for utility-scale wind turbines can be broken down into three categories: manufacturing, transport and installation, and ...

How much does wind power really cost? , World Economic Forum

The best estimate available for the total cost of wind power is \$149 per megawatt-hour, taken from Giberson's 2013 report. It is difficult to quantify some factors of the ...



[NFU Energy wind energy guide](#)

How much does it cost to buy a wind turbine? As you can imagine this varies greatly depending on the size - farm wind turbines in the range 5kW - 500kW would typically cost from around ...



How Much Torque Does A Wind Turbine Produce?

A wind project, also known as a wind farm, is a collection of wind turbines that are clustered together and act similarly to a power plant, providing electricity to the grid. The Frontier ...

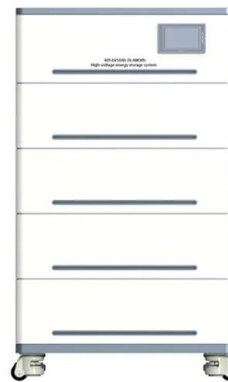


Wind Turbine Transportation , Oversize Wind Blade, ...

Current estimates indicate that it costs \$100,000 to \$150,000 to transport blades from either a port of entry or manufacturer to a wind farm. As component parts of wind generators increase in size, these costs can be expected to increase ...

Wind Turbine Blades; What You Really Need To Know

How Much Does It Cost To Transport A Wind Turbine Blade? To transport turbine blades from place of manufacture or shipping port to the required site, such as a wind farm will realistically ...



How Much Does a Wind Turbine Blade Cost

However, there are associated costs that come with purchasing and installing a wind turbine. What Does a Wind Turbine Blade Cost? The cost of a wind turbine blade can ...





How much does a 10 kW wind turbine cost?

In terms of initial cost, a 10 kW wind turbine is comparable to the cost of a 10 kW solar PV system, and will be more expensive than more common home wind turbine sizes, such as a 3 ...



Contact Us

For catalog requests, pricing, or partnerships, please visit:
<https://www.vdbconstruction.co.za>