

How much does the photovoltaic panel box weigh





Overview

The average solar panel weight ranges from 40 to 55 pounds, with 40 pounds as the most common. Like all products' specifications, you'll spot exceptions. How much do commercial solar panels weigh?

Commercial solar panels weigh around 50 pounds. Frames and mounting equipment for both panels weigh about the same amount. It is also important to consider the weight of installing solar panels on your rooftop. On average, mounting equipment and solar panels weigh two to four pounds per square foot.

How much does a 60 cell solar panel weigh?

Every brand of solar panels has slight variations in their dimensions and weights, according to manufacturing material. Although the weight of different brands of solar panels varies, an average 60 cell solar panel weighs about 40 pounds. Other important factors are wattage and voltage/current requirements.

How much does A 72-cell solar panel weigh?

72-cell solar panels weigh around 61.73 pounds. As you may recall, these larger panels usually provide 350 to 400 watts. The weight of a solar panel per unit is an important consideration when deciding which size is best for your home, which we will discuss further in a later section.

How much does an RV solar panel weigh?

RV solar panels are generally rated at 100-150 watts and are smaller and lighter than residential solar panels. In general, the average rigid solar panel used in RV solar systems is rated at 100 Watts and weighs about 15lbs.

How much do solar panels weigh on a roof?

It is also important to consider the weight of installing solar panels on your rooftop. On average, mounting equipment and solar panels weigh two to four



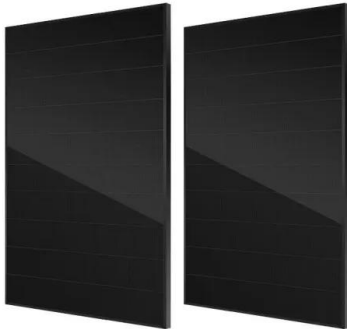
pounds per square foot. “In terms of weight, it has little impact on your roof, as it’s built to support much heavier infrastructure.

How many PV cells are in a solar panel?

Solar photovoltaic (PV) cells (6-inch by 6-inch squares) are solar panels’ crucial building blocks . A residential solar panel usually has 60 or 72 PV cells, while a commercial panel generally has 72 or 96. That number is important because it plays into solar panels’ weight — unsurprisingly, the more solar PV cells, the greater the weight.



How much does the photovoltaic panel box weigh



[Are solar batteries worth it? \[UK, 2024\]](#)

That means the same 5kWh lithium-ion battery that now costs you £2,000 to install at the same time as a solar panel system would've set you back £66,700 in 1991. The ...

Solar Panel Size & Weight: A Comprehensive Guide

How much does a 300 watt solar panel weigh? They generally consist of 60 or 72 solar cells (or 120-144 half-cut solar cells) and can produce 300 to 400 watts of power. In general, ...



[How Much Do Solar Panels Weigh?](#)

When mounting solar panels, the weight does not sit in one place on the roof. It spreads evenly over the surface area each panel occupies. So a solar panel of this size and weight distributes ...

Solar Panel Size And Weight: A Comprehensive Guide

Solar panel weight varies by manufacturer, but standard 60 cell solar panels weigh about 40 pounds. Commercial solar panels weigh around 50 pounds. Frames and mounting equipment for both panels



Solar Panels Sizes and Weights (All Sizes)

The weight of a solar panel per unit is an important consideration when deciding which size is best for your home, which we will discuss further in a later section. Kilograms per ...



How Much Do Solar Panels Weigh? 1.30 - 2,608.7 lbs ...

If we know that 1 square foot of a solar panel weight 2.25 lbs and has a rated wattage of 17.25 watts, we can calculate the how much any solar panel (100W, 200W, 300W, 400W, 500W) and any solar system (3kW, 5kW, 10kW, 20kW, ...



How Much Does a Solar Panel Weigh?

Much of a solar panel's weight can be attributed to the aluminum frame and glass covering, as well as the mounting racks and equipment used to hold them in place. These features add ...





How much does the average solar panel weigh

How much do solar panels weigh? Now, it's time to address the central question on your mind: how much do solar panels weigh? Well, a residential solar module typically weighs slightly ...



Solar Panel Weight - WGS Solar

Solar Panel Weight How much do solar panels weigh? Each panel weighs around 42 pounds (19 kg), though this may vary from brand to brand, but is usually about the same for most solar ...

How Much Do Solar Panels Weigh?

How Much Do Solar Panels Weigh FAQ. Q: How Much Do Solar Panels Weight Per Square Foot? A: Most solar panels weigh about 40 pounds That means, for pitched roofs, solar panels add ...



How Much Do Solar Panels Weigh? A Complete Guide ...

In general, a 60 cell residential solar panel weighs between 35lbs and 50 lbs (16-22 kg) and can produce between 300 and 400 watts of power. However, a 36 cell flexible (thin-film) solar panel which can produce ...



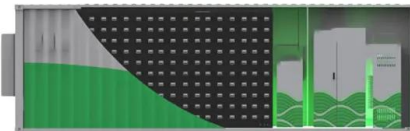
How Much Do Solar Panels Weigh?

The weight of a solar panel varies by manufacturer, material, and construction. An EcoFlow 400W rigid solar panel weighs 21.8kg, whereas a 400W portable solar panel from the same manufacturer weighs 16kg.



How Much Does a Solar Panel Weigh? The Weight Explained

It's key to understand how much does a solar panel weight and to be able to use a solar panel weight calculator. This helps figure out if different installation spots are right for ...



How much do solar panels weigh?

Most of the solar panels available on the market, consisting of 60 cells per panel, weigh about 40 pounds (18 kilograms). However, some solar panels can weigh up to 50 pounds (22.6 kilograms), but these are usually ...



How big are solar panels? Solar panel size and weight

Solar panels generate clean energy and significant savings, but they aren't a one-size-fits-all solution. The size and weight of solar panels vary depending on the make and ...





How Much Do Solar Panels Weigh?

Polycrystalline solar panels weigh approximately 18-20 kg and are one of the more cost-effective solar panel options. The good news is that they can last just as long as monocrystalline panels. However, you won't always ...



Solar Panel Sizes & Dimensions UK (2024)

Many solar panel companies make small solar panels designed specifically for small roofs. You can also opt for high-efficiency solar panels that have conversion rates as ...

How big are solar panels? Solar panel size and weight

The size and weight of solar panels vary depending on the make and model, with most residential panels measuring about 5.5 feet by 3 feet and weighing between 40 and 50 pounds. The total system size is also influenced ...



Solar Panel Sizes, Dimensions & Weight

The size of a solar panel will directly impact the number of solar cells that can fit onto the panel, which determines how much electricity can be generated from captured solar ...



Solar Panel Size Guide: How Big Are Solar Panels and How Much Do ...

How much does a solar panel system weigh? This is an important factor to consider, especially if you have a residential home with an older roof. Depending on the state ...



How To Install And Use A Solar Panel Combiner Box?

A 45-watt solar panel is a compact and affordable solar energy system that can power a variety of low-power devices and appliances. With the increasing popularity of ...



Solar Panel Dimensions & Weight in Australia: The ...

The variation in output will usually not change the size of a single solar panel. The standard size of a 250W solar panel is approximately 1.7m x 1.0m, with slight variations depending on the manufacturer. The ...



Solar Panel Size & Weight: The Ultimate Guide 2024

60-Cell Solar Panels. The typical size of a solar panel, such as the 60-cell variant, is designed in a 6x10 configuration and has dimensions of approximately 3.25 feet by 5.5 feet.





How Much Do Residential Solar Panels Weigh?

96-cell panels: 70-72 pounds; Solar panel manufacturer. The weight of an average 60-cell solar panel varies by manufacturer. For example, SunPower, which is the manufacturer of some of the best solar panels, has some 60-cell ...



Solar Panel Weight Guide

Residential solar panels weigh about 2.3 pounds per square foot. Meanwhile, commercial solar panels weigh roughly 2.5 pounds per square foot. Mounting equipment adds an average of 4.5 pounds per square foot to ...

How Much Does A Solar Panel Weight

How Much Does A Solar Panel Weight? The weight of a solar panel can vary based on factors such as its size and materials. On average, a standard 60-cell solar panel weighs around 40 pounds (18 kilograms). This ...



Contact Us

For catalog requests, pricing, or partnerships, please visit:
<https://www.vdbconstruction.co.za>