

# How much tilt should a photovoltaic panel have to be repaired





## Overview

---

Your solar panels need a 49-degree tilt. How often should a solar panel be tilted?

The importance of tilt angles doesn't stop after your system is installed. As seasons change, so does the sun's path across the sky. In many regions, fine-tuning the positioning of your solar panels a few times a year can notably improve their output.

What is the best tilt angle for solar panels?

Typically, the more north you go, the greater your optimal tilt angle. For example, the ideal year-round angle for Minneapolis is 33.6°, versus New Orleans at 26.6°. Check out our table below for more examples of ideal tilt angles by city. Here's a look at the best solar panel angles of 30 major US cities:.

How do I find the perfect tilt angle for PV panels?

Modern technology comes to our aid when determining the perfect tilt angle for PV panels. The solar tilt calculator uses a complex formula that empowers you with a simple way of finding the perfect angle that your PV modules need to be based on your geographic location and orientation of your roof.

Can tilt angle optimization increase solar panel output?

Proper tilt angle optimization can increase solar panel output by 10-40%, depending on the location and specific circumstances. In today's blog post, we'll explain tilt angles for solar panels, providing practical knowledge and actionable recommendations for maximizing your solar energy system's performance.

Do solar panels have a vertical tilt?

The vertical tilt, or angle, at which the solar panels are installed in a photovoltaic (PV) system will have an impact on the amount of electricity they



can generate. A panel will collect solar radiation most efficiently when the sun's rays are perpendicular to the panel's surface - however the angle of the sun varies throughout the year.

Do solar panels need to be tilted?

When the sun is higher, panels require less tilt. The goal is to catch as much direct sunlight as possible throughout the day and across seasons. So when the sun hangs lower in winter, you'd increase the panel angle. When it's higher in summer, you'd dial it down a bit. Location is also a key factor.



## How much tilt should a photovoltaic panel have to be repaired

---



### [Photovoltaic panels tilt angle optimization](#)

The tilt angle of solar panels is significant for capturing solar radiation that reaches the surface of the panel. Photovoltaic (PV) performance and efficiency are highly ...

### [Solar Panel Tilt Frames: Are they worth it?](#)

Excellent article and very true. However I think you under estimated the cost of tilt framing a 3.0kw system. The whole price for a decent tilt kit(one which comes with an engineering report ) would be almost \$300 and then there is the extra ...



### **How Much Does Tilt Angle Affect Solar Panels?**

The tilt angle of solar panels significantly impacts their performance, with proper optimization potentially increasing energy production by 10-40%. While the ideal angle varies based on location and specific ...

### **Solar panel angle. How to calculate the angle of solar panel**

Tilt solar panel angle . The tilt, otherwise known as the "elevation/altitude angle of solar panels," is the vertical inclination of your photovoltaic panels. When a PV panel lays on the ground, it has ...



### How PV panel tilt affects solar plant performance -- ...

The vertical tilt, or angle, at which the solar panels are installed in a photovoltaic (PV) system will have an impact on the amount of electricity they can generate. A panel will collect solar radiation most efficiently when the ...



### Common Flexible Solar Panel Problems and How to Fix Them

Flexible solar panels have quite a few downsides. But, be it rigid or flexible, all solar panels have strengths and weaknesses. You can avoid most of the flexible solar panel problems by ...



### Best Tilt Angle For Solar Panels [Summer + Winter]

Power output for solar panel systems highly depends on solar radiation incidence over the photovoltaic (PV) modules. Installing fixed solar panels might prove profitable in many locations, but ignoring the tilt angle ...





### The best angle and direction for solar panels [UK, 2024]

Solar panels should ideally face south in the UK, though arrays that face east or west can also be extremely productive. North-facing solar panels aren't usually worth installing. On the other hand, panels that point towards the ...



### [Solar Panel Tilt Angle Calculator](#)

To maximize efficiency and reduce energy costs, you'll want to find the best solar panel tilt angle for your solar power system. When the sun is lower in the sky, solar panels need a greater tilt ...

### What Should Be The Best Solar Panel Angle and Direction for

Practical Tips for Optimal Solar Panel Installation. Align with Latitude: For optimal year-round performance, align solar panel tilt angles with geographic latitude. Seasonal ...



### Which Is More Important: Solar Panel Orientation or ...

Here are some important things to consider to determine the best tilt for your solar panel array: Latitude The majority of solar panel systems are installed at the angle that maximizes sunlight exposure for that location. ...



## Solar Panel Angle Calculator: How much should it be ...

4 Methods to find Angle using solar panel angle calculator:-Below are the methods to calculate the optimal tilt angle for your solar panel according to your location. Solar Panel Tilt Angle Calculator; Simple Rules of ...



## Is my roof suitable for solar panels? [UK checklist]

The average solar panel takes up 2m<sup>2</sup>, and your installer should leave around 40cm on each side of the array, as well as 3cm between every panel. In addition, your installer ...

## [Solar Panel Angle By Postcode UK](#)

The best all-year-round angle for PV (photovoltaic) solar panels in the UK is 35-40 degrees. The best angle for each region within the UK will vary slightly within this. For seasonal changes, the best angle for ...



## (PDF) Optimal tilt angle for solar photovoltaic modules on pitched

On flat roofs, PV installation is rarely restricted, and the azimuth and tilt angles can be freely chosen. On sloped and gable roofs, both the azimuth and tilt angles of the PV ...



### Optimal Solar Panel Tilt & Orientation for Maximum Efficiency

Regardless of the type, all panels will perform better when aligned closer to the sun's rays, so finding the optimal tilt angle is beneficial for any solar panel technology. What ...

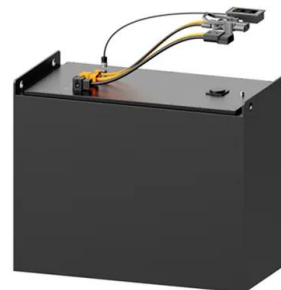


### A Full Guide to Photovoltaic Array Design and Installation

Generally, solar panel systems have a payback period of around 5 to 10 years but can be shorter if you take advantage of incentives and rebates. Government Incentives ...

### Effect of Tilt Angle Orientation on Photovoltaic Module Performance

The tilt angle of solar panel depends upon geological location and also depends on the weather. In India optimal tilt angle is 20° with ± 2° of variation depends on latitude [3]



### Solar Panel Angle: Definition, and How to Calculate

Solar panel angle is the tilt at which a solar panel is installed stalling solar energy is more cost-effective and energy-efficient if you select the right angle for the solar ...



### Solar panel angle. How to calculate the angle of solar ...

Calculating the optimum tilt for your solar panels. The tilt solar panel angle calculation receives so much attention because your photovoltaic panels will obviously produce maximum solar energy when they are pointed directly at ...



### What is the optimal orientation and tilt angle for solar ...

During the spring the best angle is 45°, and during the summer when the sun is high in the sky, it's best to have a low tilt at 20°! What angle for solar panels should be chosen to maximize the production all year long? In ...

### The Impact of Tilt Angle on Photovoltaic Panel ...

Designed and built system An Arduino MEGA 2560 (figure 3) used to control the system and as data logger also (Smith, 2011). Two servo motors used to rotate the PV panel around tilt angle axes



### How to Install Solar Panels: Solar Panel Placement

This is because the angle of your panels' tilt affects what percentage of the sunlight it gets. There are two types of solar panels: fixed and adjustable. Fixed panels are ...



### How Much Does the Angle Affect Solar Panel Efficiency?

Key Takeaways. A 5-degree deviation from the optimal tilt angle can reduce solar panel energy output by up to 10% in India. The optimal tilt angle for a solar panel is typically ...



### Upgrading and Replacing Old Solar Panels: A Guide

The solar industry has seen rapid advancements over the past few decades. With increasing global emphasis on renewable energy, solar technology has evolved, leading to more efficient and longer-lasting panels. ...

### Solar Panel Angle Calculator: The Definitive Guide

Annual energy output vs panel tilt angle, for a South-facing 5 kW array in Phoenix, Arizona  
Tilting the panels significantly increases energy output (read our article to ...



### How To Choose The Right Solar Panel Tilt And Orientation For ...

If you're considering installing solar panels on your property, one of the most crucial factors to consider is how to position them for maximum energy production. The tilt and ...



Solar panel direction and angle calculator

Modern technology comes to our aid when determining the perfect tilt angle for PV panels. The solar tilt calculator uses a complex formula that empowers you with a simple way of finding the perfect angle that your PV modules need to ...



Solar Panel Orientation and Tilt

Energy Independence: If you aim to reduce your reliance on the grid and achieve energy independence, your solar panel orientation and tilt should be tailored to meet your energy ...



**Will a Cracked Solar Panel Still Work? (Damaged)**

By touching the prods to the panels' terminals, they'll show you how many volts your panels produce. You have a dead panel on your hands if there isn't any current. Compare how much you see on your voltmeter with the ...



**What is the Best Angle for Solar Panels? Maximizing the Efficiency**

So the most prevalent residential solar panel tilts likely fall within 14-27 degrees, with 18-23 degree tilts common to match 4/12 and 5/12 pitched roofs. Using Renogy's ...





## Contact Us

---

For catalog requests, pricing, or partnerships, please visit:  
<https://www.vdbconstruction.co.za>