

How much voltage difference can photovoltaic panels be connected in parallel





Overview

When solar panels are connected in parallel (known as arrays) they all share the same voltage, and the current that each one of them provides is summed up. Do solar panels wired in parallel increase volts?

Solar panels wired in series increase the volts of the solar array, but the amps remain the same. On the other hand, solar panels wired in parallel increase the amps while the volts remain the same. Connecting solar panels in parallel allows the system to generate more electricity without exceeding the voltage limits of the inverter.

What is the difference between connecting solar panels in series vs parallel?

Connecting your solar panel in series vs parallel affects current flow and is dictated by your installation's setup. Warning: Science below! While we're not going to get too deep into the details, the difference between connecting solar panels in series vs in parallel is an intermediate level solar discussion.

Does connecting solar panels in parallel affect wattage?

No. Connecting solar panels in serial or parallel does not impact how much wattage they produce in laboratory conditions. Connecting solar panels in parallel increases amperage and keeps voltage constant. Series connections produce higher voltage while maintaining amperage, regardless of how many panels you use.

Can a solar panel array be connected in parallel?

By combining both wiring configurations, it is possible to create a solar panel array that meets the voltage and current requirements for your specific application. For example, if you need a higher voltage, you can connect multiple series strings in parallel, while if you need more current, you can connect multiple parallel strings in series.

Can I install solar panels as a series or parallel circuit?



It is also possible to install solar as a combination of series and parallel circuits to try and maximize the advantages of both types of wiring. This combination can also help you achieve a desired amount of voltage or current depending on what your needs are.

Do all solar panels have the same voltage rating?

All solar cells in a series-wired solar array must have the same current (amperage) rating. Although the voltages of the panels will add up, the current output will be equivalent to that of the panel with the lowest rating in the series. All solar cells in a parallel solar array should have the same voltage rating.



How much voltage difference can photovoltaic panels be connected

Choosing Between Series and Parallel Connections for Solar Panels

Whether you use series or parallel wiring changes how your solar panel works. Series connections can lower power output if one panel gets shaded. However, parallel ...



Solar Panel Wiring: Series vs. Parallel For Solar , EnergySage

The capacity of a solar panel to produce energy is measured in watts (W), which is calculated by multiplying a solar panel's voltage by the amps of current it ...



Solar String Expansion. Panels Connection Parallel vs ...

Connecting Different Spec Solar Panels in Parallel. Mixing panels with different currents but equal voltages can work well when wiring them in parallel. When connected in parallel, the current of each panel is summed ...



[Shading Solar Panels Series or Parallel](#)

Multiple solar panels can be connected in series or parallel. Most of the time, your panels will be connected in series. of the solar panel. The voltage (V) is affected by ...



Solar Simplified: Easy-to-Understand Guide to Voltage, Amperage ...

Understanding wattage is essential for determining how much energy a solar panel can produce and, consequently, how much power your devices or appliances can draw ...

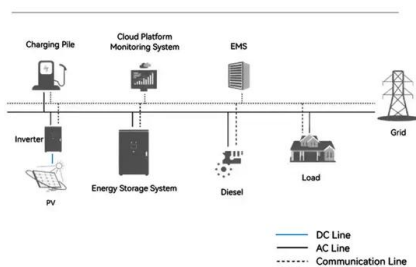


Solar Panel Series vs Parallel: What's The Difference

Wiring Solar Panels in Parallel. When discussing solar panel series vs parallel configurations, parallel wiring is a distinct approach to connecting multiple solar panels. In a parallel connection, all positive terminals ...



System Topology



Solar Panel Power Calculator

Solar Panel Calculator is an online tool used in electrical engineering to estimate the total power output, solar system output voltage and current when the number of solar panel units ...



How to Fix a Solar Panel That's Producing Too Much Voltage

Solar panels are connected in series or parallel to meet the desired voltage and current levels of a solar system. The rated terminal voltage of a typical 12V solar panel is ...



Ultimate Guide to Solar Panels in Series vs. Parallel

When connected in parallel, four 100-watt panels with a combined maximum voltage of 17.9 volts could generate 17.9 volts. The same panels could generate 71.6 volts when connected in series. How to Wire Solar ...

Solar panel strings: Parallel & Series explained

You typically put the most panels you can together in series (called a string); but not so many you exceed the voltage. You repeat that for as many panels as you have and ...



TAX FREE

ENERGY STORAGE SYSTEM

Product Model
HJ-ESS-215A(100KW/215KWh)
HJ-ESS-115A(50KW 115KWh)

Dimensions
1600*1280*2200mm
1600*1200*2000mm

Rated Battery Capacity
215KWH/115KWH

Battery Cooling Method
Air Cooled/Liquid Cooled

Should Solar Panels Be Connected In Series or Parallel?

Series vs. Parallel Connections: A Comparison. Series Connections:.. How It Works: In a series connection, solar panels are connected end-to-end, with the positive ...



Solar panel wiring basics: How to wire solar panels

Using 300 W solar panels, you could then connect roughly 17 solar panels (5000 W / 300 W per panel). Can I connect solar panels directly to a battery? Although the answer is technically ...



LFP 12V 200Ah



Connecting Multiple Solar Panels - Series vs. Parallel

Consider having a set of four solar panels: three panels of 12V and 3A and one panel of 9V and 1A. If you connect these four panels in parallel, all of them must have the same voltage, and therefore, will generate at the ...

Ultimate Guide to Solar Panels in Series vs. Parallel

Each solar panel's voltage is combined when wiring solar panels in series. The current of each solar panel is added together when wired in a parallel solar panel ...



Solar Panels: Connected In Parallel Or In Series

In parallel, as long as the solar panels have the same output voltage, they can be connected in parallel to the controller for use. At this time, the power of all solar panels will ...





Understanding PV Wiring in Series, Parallel and Polystring

All three east west parallel PV-panel pairs will be connected in series to get higher voltage and go to my one input PV inverter. Is this a good, cheap and smart solution? ...

Highvoltage Battery



Parallel Connected Solar Panels For Increased Current

Using the same three 12 volt, 5.0 ampere pv panels from above, we can see that they are connected together in a parallel. The combined connection produces a total of 15 amperes (5 ...

How to Connect Solar Panels in Parallel: A Step-by ...

Let's talk about using parallel connections in real life. Imagine hooking up three 12-volt, 5.0 ampere PV panels in parallel. You'd get 15 amperes and keep the voltage the same, reaching 180 watts total.



Do Solar Panels Need Blocking or Bypass Diodes?

In the above example, you only had to deal with a single solar panel. In real life, this is mostly not the case. You may come across multiple strings as well. A solar panel array has more than one branch or strings ...





Solar Panel Output Voltage: How Many Volts Do PV ...

36-Cell Solar Panel Output Voltage = $36 \times 0.58V$
= 20.88V. What is especially confusing, however, is that this 36-cell solar panel will usually have a nominal voltage rating of 12V. If I have a 24v PV system, can I connect a 24v wind ...

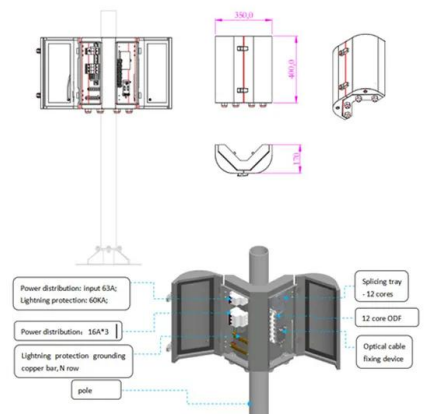
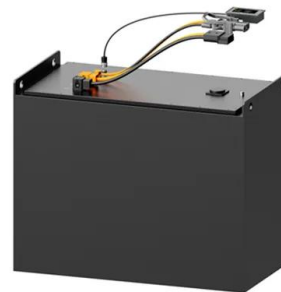


Should You Wire Your Solar Panels In Series Or Parallel?

The actual output voltage of your solar pv modules will be higher than the nominal voltage. 12V panels produce up to 18V-24V, depending on the panel. The figure out ...

Guide to Solar Panel Parallel vs Series Wiring

Solar panel parallel vs series connection: what's the difference? The major practical difference between wiring identical solar panels in series or in parallel is what happens to the output current and voltage in each case:



What's the Difference Between Connecting Solar Panels in Parallel ...

The failure of one panel can disable the system. Even its shading can affect a solar panel series connection, reducing the entire battery's efficiency. While the serial ...



Connecting Solar Panels in Series or in Parallel?

When wired in parallel, the resulting parallel string will have a voltage of 12 volts (the lowest voltage rating of the 3 panels) and a current of 21 amps (8A + 7A + 6A). In this example, our parallel string will have some power ...



[Connecting Solar Panels: Series vs Parallel](#)

The wire from the positive terminal of one solar panel is connected to the negative terminal of the one next in line, and so on, to create a series connection. When you include both solar ...

Understanding the series and parallel connection of solar panels

To form a series-parallel connection, these strings of panels are then wired in parallel, as shown below: Figure 3: Three strings of solar panels in a series-parallel ...



Understanding Solar Panel Configurations: Series vs Parallel

Often, combining series and parallel gives you the most flexibility. You can get the voltage and current just right for your needs by connecting some panels in series and then ...



How to Connect Solar Panels in Parallel and Series

how to connect solar panels in parallel and series. When we connect solar panels in parallel, we join the positive terminals together and the negative terminals together. This ...

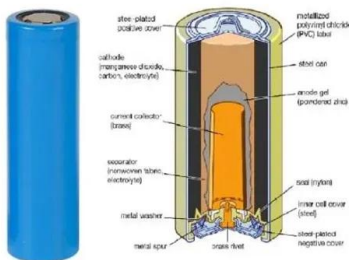


How to wire solar panels in series vs. parallel

Key takeaways. The way in which solar panels are wired determines how the system performs and what inverter the system can be paired with. When solar panels are wired in series, the positive terminal of one solar module is ...

Can You Mix Different Voltage Solar Panels?

There are two main ways that solar panels can be connected: Solar panels connected in series. Voltage: Adds up. Current: Limited to the lower power rating. When you ...



Should Solar Panels Be Connected In Series or Parallel?

What is the difference between series and parallel solar panel connections? In a series connection, the voltage of each panel adds up, while the current remains the same. In a ...



Contact Us

For catalog requests, pricing, or partnerships, please visit:
<https://www.vdbconstruction.co.za>