

# How thick are solar panels





## Overview

---

**Solar Panel Sizes Key Points:** Domestic solar panels come with an average power output of 250-400 watts. In terms of dimensions, domestic solar panels average 1.7 metres long, and 1 metre wide and have a thickness of 3cm to 5cm. Domestic solar panels can weigh between 18kg - 20kg on average.

What is the size of a solar panel?  
An individual solar cell is a 6" x 6" square. 60-cell panels are laid out in a 6x10 grid, making them approximately 6 feet x 10 feet. 72-cell panels are laid out in a 6x12 grid, making them about 6 feet x 12 feet. These are the standard solar panel sizes for most residential and commercial installations, with dimensions usually within an inch on either side.

How big is a 72 cell solar panel?

The average length, width, and thickness of a 72 cell solar panel are 79 inches (2m), 40 inches (1m), and 1.5 inches (38mm) respectively. On average, the area of a 72 cell solar panel is 22 ft<sup>2</sup> (2m<sup>2</sup>). Another type of residential solar panels are solar panels with half-cut solar cells.

How thick is a solar panel?

That also varies depending on manufacturer; solar panel thickness typically ranges between 1.25 inches (32 millimeters) and 1.6 inches (40 millimeters).  
How much does a solar panel weigh?

Most solar panels weigh around 40 pounds because they are constructed to be able to endure constant exposure to the elements.

How much does a solar panel weigh?

Solar panels usually weigh about 40 to 50 pounds. Commercial solar panels are generally larger than residential solar panels at 6.5 feet by 3 feet. Installing high-efficiency solar panels can reduce the number of panels you need, which lightens the total load on your roof. How big is a solar panel?



.

How big is a commercial solar panel?

The average size of a commercial solar panel, such as those you would see on top of a hospital or in a field, is about 6.5 feet (2 meters) by 3.35 feet (1 meter), or 78 inches by 39 inches. They contain a system of at least 72 solar cells and can weigh around 50 pounds. How Many Cells Does a Solar Panel Have?

.

What are the dimensions of a residential solar panel?

In general, the length of residential solar panels is usually between 65 inches (1.65m) and 79 inches (2m), their width is between 39 and 41 inches (around 1m). The area of a residential solar panel is between 18 ft<sup>2</sup> and 22 ft<sup>2</sup>. The following section explains the different types of residential solar panels and their dimensions.



## How thick are solar panels

---



### Paper-thin solar cell can turn any surface into a power source

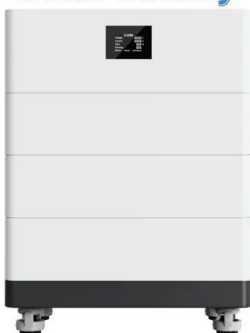
MIT researchers developed a scalable fabrication technique to produce ultrathin, flexible, durable, lightweight solar cells that can be stuck to any surface. Glued to high-strength fabric, the solar cells are only one-hundredth the weight of conventional cells while producing about 18 times more power-per-kilogram.

### Solar panel size and weight explained: how big are solar panels?

Solar panel systems are an increasingly common sight on rooftops all across the U.S., but unless you climb up onto a roof, it can be difficult to figure out how big solar panels are and how much they weigh. In this article, we'll help you understand solar panel size, solar panel weight, and whether your roof can support a solar panel system that produces enough wattage ...



### High Voltage Solar Battery



### [How quickly are solar panels improving? \[2024\]](#)

There's also a ceiling on the growth of most panels, as the theoretical efficiency limit of single-layered solar panels - which describes all modern solar panels installed on homes - is 33.7%. Multi-layered panels like the perovskite-silicon tandem panel have the potential to raise the bar for solar efficiency, but they're still mired in development and are facing significant ...

### [How Much Do Solar Panels Cost?](#)

Solar panels could reduce your bills and even earn money by generating electricity you can sell



back to your energy company. But the average solar panel system of 3.5kWp will cost around £7,000 to install, according to estimates from the Energy Saving Trust.

Solar



### [Complete Guide to Solar Panel Size](#)

An average solar panel system requires between 15 to 19 solar panels and takes up 260 to 340 square feet of space. Solar panel efficiency, output, a good warranty, and a trusted brand are more important than focusing on solar panel ...

### How Thick Are Solar Panels? Solar Panel Size Explained

1. How thick are solar panels? Solar panels usually have a thickness of around 1.2 to 1.8 inches, including the laminate and aluminium frame. 2. What is the standard size for ...



### Ultimate Guide to Solar Panel Size and Weight

Source: Mission Solar Energy Usually, residential rooftop solar panels are approximately 65 inches tall, 40 inches wide, and 2 inches thick. In feet, that would be 5.4 ft. by 3.3 ft. Commercial solar modules are usually slightly larger in length and width only. However



### How Big are Solar Panels?

Small, portable solar panels are great for use as energy sources in outdoor activities such as camping, hiking, or boating. These panels are also perfect for small off-grid applications, such as powering small electronics or lights. They usually range from 20x20 inches



### Solar Panel Size And Weight: A Comprehensive Guide

When considering residential solar panels, typical configurations consist of 60 cells measuring approximately 3.25 feet by 5.5 feet. These panels cover an area of 17.62 square feet and weigh



### Standard Solar Panel Sizes And Wattages (100W-500W ...

This is the typical classification of solar panel sizes (based on the solar cell size). It's a bit theoretical and quite useless for most calculations. The only useful thing that we get from this is depth or height (panel thickness): Most solar panels are about 1.5 inches thick.



### How Big is a Solar Panel? The Solar Panel Size Guide

For a residential solar panel, size is fairly consistent across manufacturers: 65 inches (1.65 meters) by 39 inches (1 meter) is the average solar panel size that you find on the roofs of ...





### Which Type Of Solar Panel Is Best For You?

The type of solar panel you need depends on the type of system you want to install. For a traditional rooftop solar panel system, you'll usually want monocrystalline panels due to their high efficiency. If you have a big roof with a lot of space, you might choose polycrystalline panels to save money upfront.



Nominal Capacity  
**280Ah**  
Nominal Energy  
**50kW/100kWh**  
IP Grade  
**IP54**



### **Solar Panel Size & Weight Breakdown: How Big are Solar Panels?**

Aluminum framed solar panels are 1.25" thick, and those without are less than a third of an inch thick. The terms solar panels and solar modules are both used to describe a unit of solar cells encased in glass. The term solar panels can also refer to solar thermal

### A Guide to Solar Panel Dimensions

There are many different sizes of solar panels, but the two most frequently used sizes are: A 60-cell solar panel 39x--66 inches 3.25x--5.5 feet A 72-cell solar panel 39x--77 inches 3.25x--6.42 feet By comparing their dimensions, you can observe that the two



### **Solar Panel Size & Weight: A Comprehensive Guide**

Standard residential solar panels, the ones you would have installed onto your homes roof, measure on average 65 inches by 39 inches, or 5.4 feet by 3.25 feet, covering an area of 15 square feet. There are slight measurement variations depending on the solar





## Solar Panel Size & Weight Guide [+ Charts] - Solartap

It's natural to have questions about solar panel size when determining how many you can fit on your property. Generally, each panel is 66 inches by 40 inches. Picture this -- after determining the solar system size you need and ordering enough panels to support your electricity consumption, you find that you don't have enough space on your roof to support them.



### Solar Panel Size: Dimensions & Determining Factors

When it comes to depth, solar panels are generally between 1.4 to 1.8 inches thick. Residential solar panels are made by manufacturers to be a bit smaller than commercial panels for them to make the most of your available roof space. They aren't all exactly

### How Big Is A Solar Panel

Solar panels are a key component of solar energy systems and are widely used for both residential and commercial applications. Importance of Solar Panel Dimensions  
Understanding the dimensions of solar panels is essential when it comes to their installation



### How big are solar panels? Solar panel size and weight

Solar panels usually weigh about 40 to 50 pounds. Commercial solar panels are generally larger than residential solar panels at 6.5 feet by 3 feet. Installing high-efficiency solar ...



### Standard Solar Panel Sizes And Wattages (100W-500W ...

The only useful thing that we get from this is depth or height (panel thickness): Most solar panels are about 1.5 inches thick. Alright, let's have a look at the length and width of typical solar panels, with wattage (very important), and complete with area or square footage (useful when ...



### Solar Panel Size & Weight Guide [+ Charts] - Solartap

Most solar panels are a little over 5 feet by 3 feet and weigh 40-45 pounds, but size varies by manufacturer. In this guide, we'll unpack solar panel size in greater detail, helping you determine how large of a system your ...

### [Are solar panels worth it?](#)

Find out if solar panels are worth it for your home, and if they can help you save money on your electricity bills. Plus find out how solar PV systems work. A solar PV system usually comprises: solar panels. inverter - ...



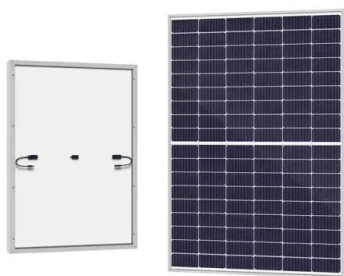
### Guide to Solar Panel Sizes & Dimensions (November 2024)

For instance, a typical 2kW solar panel system suited for 1-3 people will need anywhere between 5 and 8 solar panels (for 350W panels). This assumes you'll receive about 4 hours of sunlight a day and the positioning and efficiency of the solar panels is optimal.



## How Big is a Solar Panel? A Guide to Solar Panel Dimensions

Image Credits: energyfollower The 60-cell and 72-cell solar panels are commonly used for residential and commercial purposes. The 96-cell solar, measuring 17.5 square feet, could be challenging to install on a roof but is also most suitable for large-scale solar



## Thin-Film Solar Panels: An In-Depth Guide , Types, Pros & Cons

Thin-film solar panels have a promising future with many benefits over traditional panels. Explore the different types and applications now-> CdTe solar cells are manufactured using absorber layers comprising a p-n heterojunction, which combines a p-doped Cadmium Telluride layer and an n-doped CdS layer that can also be made with magnesium zinc oxide ...

## Solar Panel Sizes, Dimensions & Weight , Solar Choice

There isn't one single answer to the question "How big are solar panels?" but the size of the solar panels you install for residential or commercial solar systems matters. For one thing, solar panel sizes or dimensions, ...



## Solar panel sizes: Find solar panels in the right size and wattage ...

The solar panels you get in solar kits for DIY, caravans and other off-grid projects can be even smaller, measuring about half a metre at their shortest and generating around 50W to 150W. At the either end of the spectrum, you can now get solar panels that measure more than 3.5 metres and provide 700W of power - twice as much as standard-sized panels.



### Solar Panel Size Guide: How Big Is A Solar Panel?

Solar arrays take up quite a bit of space, and not every property has room for them. This quick guide will cover standard solar panel sizes and explain how to figure out how many panels you need in your system. From there, you can ...



### What Glass is Used in Our Solar Panels? Analysis

And what type of glass is being used in these solar panels? Let's find out Skip to content Save Big, Specials Offers Live! Ends Nov 6th, 2024 , Order Today! Save Big, Specials Offers Live! Ends 11/6/2024 - Order Today! ...

### How efficient are solar panels? , Average percentage ...

Solar panels aren't 100% effective at converting daylight into electricity - but no energy-generating technology is 100% efficient. Residential solar panels usually have an efficiency of 18% to 24%, which is enough to ...

TAX FREE

### ENERGY STORAGE SYSTEM

**Product Model**  
HJ-ESS-215A(100KW/215KWh)  
HJ-ESS-115A(50KW 115KWh)

**Dimensions**  
1600\*1280\*2200mm  
1600\*1200\*2000mm

**Rated Battery Capacity**  
215KWH/115KWH

**Battery Cooling Method**  
Air Cooled/Liquid Cooled

### How Big Is A Solar Panel? A Guide To The Different ...

In general, the length of residential solar panels is usually between 65 inches (1.65m) and 79 inches (2m), their width is between 39 and 41 inches (around 1m). The area of a residential solar panel is between 18 ft² and ...





## What Are CdTe Solar Panels? How Do They Compare to Other Panels?

One main advantage of CdTe technology is the low cost of manufacturing. CdTe panels can be found at low prices of \$0.46/Watt, which is 70% cheaper than the cost for crystalline panels. Another strong advantage of CdTe technology is that it is less affected by strong changes in temperatures, delivering a constantly higher voltage in PV systems.



### [Solar Panel Dimensions Chart](#)

How Thick Are Solar Panels? The thickness of standard solar panels - the ones you usually see installed on the roof of houses - varies between 1.2 to 1.5 inches (approximately 30 to 40 mm). These solar panels are typically made with monocrystalline or

## Contact Us

---

For catalog requests, pricing, or partnerships, please visit:  
<https://www.vdbconstruction.co.za>