

# **How to check if a photovoltaic panel is bad**





## Overview

---

How do I know if my solar panels are bad?

Nevertheless, individual panels can fail faster than that. If you can do so safely, check the panels occasionally for any obvious signs of problems; for example, discoloured areas on the solar cells (usually a 'hot spot', where the panel overheated and was damaged). Read more: [How to maintain your solar panel system](#).

What happens if a solar panel is bad?

In some cases, a bad solar panel may also cause your inverter to display an error message. To determine if a solar panel is bad, look for signs such as decreased energy production, physical damage or discoloration, hot spots, potential-induced degradation (PID), and monitoring system alerts.

How do I know if my solar inverter is bad?

Check the solar inverter for any warnings or faults. Check that the isolators are all on and that the circuit breakers have not tripped off. Check the grid voltage on the inverter display or app for over-voltage issues. Hire a solar professional or electrician to inspect the solar system.

Why is it important to test a solar panel?

Testing a solar panel is very important to ensure its quality and safety. Solar Panels are becoming a great way to save money and the environment simultaneously. The solar market is growing exponentially, and thanks to new tech innovations, solar panels are finding their way into more and more businesses and homes.

How do you test a solar panel?

Follow these steps to test your solar panel: Turn off the solar panel system to ensure your safety. Set the multimeter to measure DC voltage. Connect the positive and negative leads of the multimeter to the corresponding terminals



of the solar panel. Place the solar panel in direct sunlight and take a reading of the voltage output.

How do you know if a solar panel has a voltage?

To determine the voltage of a solar panel, you can look at the specifications labels on the back of the panel or in the owner's manual. Voltage is typically calculated in 12 volts or 24 volts for solar panels. An analogy for understanding voltage is that it is like the pipes in a water pressure system.



## How to check if a photovoltaic panel is bad

---



### How to Check the Quality of Solar Panels in 3 Simple Steps

Brand Identification (Manufacturer or brand name of the solar panel) Model Identification (Solar panel model or specifications) Certification Marks (Standards the solar panel has passed, such ...

### How To Know If A Solar Panel Is Bad (2 Different Ways)

It's important to be able to identify signs of a bad solar panel so that you can have it repaired or replaced as soon as possible. There are two main ways to determine if a solar panel is bad: by physical inspection and by ...



### How to Check Solar Panel Quality (Important Factors)

What solar panel quality means; How to check if your solar panel is bad; The choice you make is one that will last for 20+ years, so let's take a look at the key points and ...

### How can you tell if your solar panels are working? , CHOICE

Solar panel orientation and tilting: Panels facing due north will usually generate more energy (over the day) than those facing east or west, and they should be optimally tilted. ...

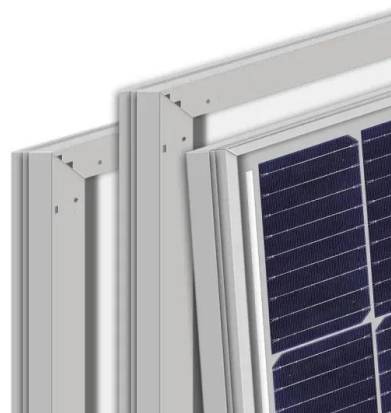


[Solar system fault finding guide & solutions](#)

Solar panel fault-finding guide including examples and how to inspect and troubleshoot poorly performing solar systems. Common issues include solar cells shaded by ...

**A Guide to Solar Panel Quality Check During Production ...**

Electrical Defects: Short circuits, open circuits, or partial shading, which may affect the performance of the solar panel. Conclusion: A Guide to Solar Panel Quality Check ...



**9 Ways To Check If Your Solar Panels Are Working**

Expands Solar Panel Life. Monitoring the functionality of your solar panels also plays a vital role in ensuring the longevity and warranty compliance of your system. Most solar panel manufacturers provide warranties that guarantee a ...



## How To Know If A Solar Panel Is Bad: Tell-Tale Signs

To determine if a solar panel is bad, look for signs such as decreased energy production, physical damage or discoloration, hot spots, potential-induced degradation (PID), and monitoring system alerts.



## Troubleshooting Solar PV System Problems , Fluke

Troubleshooting Solar Photovoltaic System PPV panels. First check the output of the entire system at the metering system or inverter. Before you begin troubleshooting, check and record ...

## [How To Find A Bad Solar Panel In A String](#)

With smart technology and microinverters, you can check each panel's output to see if there is a bad panel or at least one with low energy output. That's pretty simple. With a string inverter, the entire energy production for ...



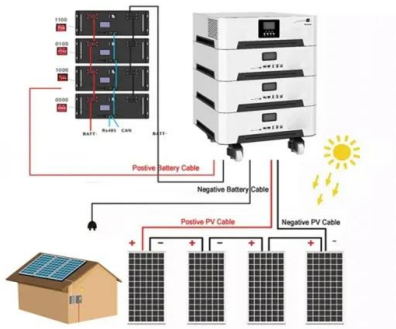
## How To Check If Your Solar PV Inverter Is Functioning Properly

If you have a red light, that's bad, and it could be that there is a fault in the system, or a problem with the inverter. Make sure to give us a call if you see a red light during the daytime when it's ...



### [How to test a solar panel with a multimeter?](#)

After you have discovered the connections, ensure that your solar panel is receiving full sunlight. Tilt the solar panel in order for your solar panel to have full sunlight ...



### [How to Test Solar Panels with a Multimeter](#)

Choose a current range that can accommodate the expected current output of your solar panel. Re-connect the multimeter in series with the solar panel: Disconnect one of the wires from the ...

### [How to Test a Solar Panel With a Multimeter?](#)

After this, let's see how to test solar panel wattage. Also See: Solar Charge Controller Load Output. How to Test Solar Panel Wattage? Knowing the voltage and current ...



### **Solar Panel kWh Calculator: kWh Production Per Day, ...**

To calculate solar panel output per day (in kWh), we need to check only 3 factors: Solar panel's maximum power rating. That's the wattage; we have 100W, 200W, 300W solar panels, and so on. How much solar energy do you get in your ...



## [How To Test A Solar Panel \(Explained!\)](#)

Testing to see if a solar panel is working; Testing to see if a solar panel is bad; Using a Multimeter; Measure Solar Output; And more; This test lets you know of any danger that can tell you if your solar panel is bad. ...



## [How to Test a Solar Panel with a Multimeter?](#)

Measure the Solar Panel Amperage . You'll need an amp meter to test solar panels. First, attach the meter to the positive and negative; this will allow you to gauge your solar panel's amp output. Once you find it, remove ...

## **How to Test Solar Panel with Multimeter (Explained)**

For an entire solar panel, you'll want to see a voltage of around 30 to 50 volts when exposed to direct sunlight, depending on the wattage rating. The open circuit voltage, ...



## **How To Know If A Solar Panel Is Bad (2 Different Ways)**

However, like any other piece of machinery, solar panels can eventually malfunction. It's important to be able to identify signs of a bad solar panel so that you can have ...





## How To Check If Your Solar Panels Are Working

How To Check If My Solar Panels Are Working. For those wondering, "Are my solar panels working?" it can be helpful to check the status of your solar panels on a regular ...



## How to Test a Solar Panel

How to test a solar panel without a multimeter. Suppose you don't have a multimeter but you still want to test your solar panel's efficiency. In that case, you can use other visual indicators, such as a brightness test. On a ...

## How to Check if Solar Panel is Charging Battery: A Complete ...

Three Simple Steps to Know if Your Solar Panel is Charging. If you ask me how to check if a solar panel is charging a battery, I'd tell you it's as simple as ABC. You'll primarily ...



## How Do I Know If My Solar Battery Is Bad? 4 Methods to Find

With a background in engineering and a passion for sustainability, ABC is your go-to source for all things solar. Having worked on solar projects big and small, he brings a ...



## Pros and cons of solar panels guide 2024 , The Independent

Alan Duncan, of Solar Panels Network, adds that solar panels need the right amount of space for installation (typically the average household will need 1.4m<sup>2</sup> per solar ...



## How To Test Solar Panels , A Step-By-Step Guide

A measurement of one and above means your solar panel's cord is broken! 4. Check the Current. Current is the amount of electricity running through the circuit. It's vital to ...

## How to Test Solar Panels with a Multimeter (3-Step Guide)

If you compare the current reading to the solar panel's maximum output power (the  $I_{mp}$  on the back of the panel), you'll see how close your solar panel is to its maximum ...



## [Solar Panel Problems And How To Solve Them](#)

Solar panel inverter problems, dirty solar panels, pigeon problems under solar panels, generation meter and electrical problems with solar PV, and much more First check ...



## How to Test Solar Panels for Common Problems , Fluke

Is Your Solar Panel Working? If your solar modules are not generating power, there may be a problem with one or more of the modules. Fluke suggests using a multimeter, clamp meter, or ...



## Understand solar panel specification sheets and how to read them

A solar panel's temperature coefficient shows the relationship between PV output and the temperature of the solar panel, and is represented as the overall percentage decrease in ...

## How To Check Your Solar Panel & Regulator/Controller

The first two measurements use the solar panel on its own. When disconnecting the solar panel, regulator and battery, take care to disconnect the panel from the regulator first, and then ...



## Contact Us

---

For catalog requests, pricing, or partnerships, please visit:  
<https://www.vdbconstruction.co.za>