

# **How to choose the best orientation for photovoltaic bracket**





## Overview

---

For maximum output, the sweet spot for solar panels in the continental U.S. is facing roughly south and tilted between 15 and 40 degrees, according to the Department of Energy. What is optimal solar panel orientation & placement?

In this blog post, we'll delve into the principles of optimal solar panel orientation and placement to help you harness the maximum energy from the sun. The angle at which sunlight strikes a solar panel directly impacts its energy output. This angle, known as the angle of incidence, should ideally be perpendicular to the panel's surface.

How to choose solar panel mounting hardware?

Selecting appropriate mounting hardware is vital for solar panels' optimal performance and longevity. The suitable mounts secure the panels firmly and influence their energy absorption efficiency by positioning them at the ideal angle and orientation. 1. Overview of Types of Solar Panel Mounts 2. Materials Used in Solar Panel Mounting Hardware 3.

How do I choose the right solar panel angle?

To find the optimal angle for your solar panels, do a Google search for the latitude of your home address or your zip code. Typically, an ideal angle for your solar panels will be equal or close to the latitude of your home. However, proper solar panel angle will fluctuate over the course of the year.

How do I choose the best solar panel placement?

Optimal solar panel placement is a blend of science, mathematics, and practical considerations. By positioning your panels to capture the most sunlight and adjusting their angle based on your location, you can ensure that your solar energy system operates at its peak efficiency.

What is the orientation of a solar panel?

The orientation of a solar panel is also called its azimuth, which is the



horizontal angle compared to true north (0 degrees). North-facing rooftops are traditionally considered unsuitable for solar panels in the UK, but this isn't necessarily the case anymore - solar panel technology has come a long way in the past couple of decades.

How do I choose a photovoltaic mounting scheme?

An appropriate mounting scheme is crucial for photovoltaic modules' effective installation and optimal function. Factors to consider when choosing a mounting option include the type of roof, such as slope roofs, wind and snow loads, local building codes, and the orientation and tilt angle of the solar panels.



## How to choose the best orientation for photovoltaic bracket

---



### Best direction for solar panels: How to position your ...

In this article, we'll explain how to ensure that your solar panels are positioned to work to their best potential, whatever angle, direction or type of roof you have, or even if you have no roof at all.

### How to fit solar panels to A tiled Roof UK , DANLEC

Types of Tiles Suitable for Solar Panel Integration. Choosing the right type of tiles is crucial. The integration of solar panels requires careful consideration of factors such as weight, durability, ...



### PV Racking Selection Guide: How to find the best type ...

Evaluate the space available for solar panel installation. For rooftop systems, consider factors such as the size, orientation, and shading of the roof. In the case of ground-mounted systems, assess the available land area ...



### Best Mounting Options for Solar Panels , RenewGenius

An appropriate mounting scheme is crucial for photovoltaic modules' effective installation and optimal function. Factors to consider when choosing a mounting option include the type of roof, such as slope roofs, wind and snow loads, ...



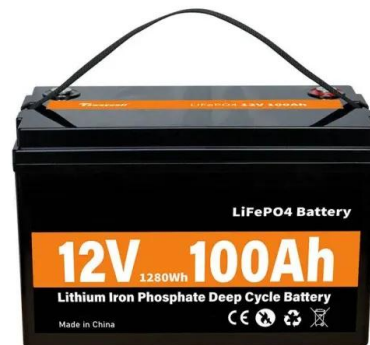
### How to Choose Solar Balcony Mounting Brackets?

- Adjustable Brackets: These brackets allow for adjustments in the angle and orientation of the solar panels, ensuring optimal sunlight exposure throughout the day. 3. ...



### How to choose between photovoltaic intelligent ...

The principle of photovoltaic intelligent tracker is to make the solar panel change with the change of the sun's angle, always keep facing the sun, so that the sunlight can directly shine on the power device of the solar ...



### The best angle and direction for solar panels in the UK

Unlike the slight regional variation in optimum angles, the best direction remains constant across the country, according to the MCS. If your roof has a south-facing section, your installer should prioritise using it, but if not, ...



### Solar panel inclination angle, location and orientation

Any implementation of a sustainable photovoltaic solar energy system implies the optimization of the resources to be used. Therefore, it is the basis for the design and ...

#### System Topology



### Mounting Solar Panels: A Complete Beginner's Guide to Installation

A Detailed Guide on Installing the Solar Panels. From marking roof rafters to finally mounting the panels, every step is crucial to ensure your new solar system ticks all the ...

### Solar Panel Orientation and Tilt

Expert Insights From Our Solar Panel Installers About Solar Panel Orientation and Tilt Proper orientation and tilt are pivotal for maximizing energy production from solar panels. South ...



LFP 12V 200Ah

### Solar Panel Placement: How to choose the best location

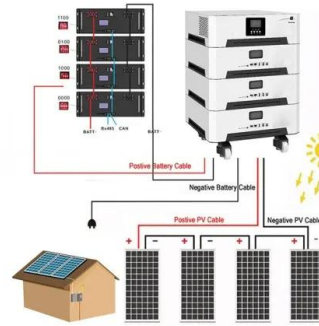
How to find out your optimal solar panel placement? If you want to find out the best placement for your solar panels based on your location and roof characteristics, you can ...





### How to Optimize Solar Panel Orientation and Tilt for Maximum ...

Optimal Solar Panel Orientation for Different Locations. Depending on the location and hemisphere, different solar panel orientations are best. In general, solar panels in ...



### [A Guide to Solar Panel Mounts](#)

The purpose of a solar panel mount is to serve as a foundation for a solar panel. Mounting systems allow for solar panel arrays to be positioned in the most effective location to ...

### What is the best angle for positioning solar panels in the UK?

The optimal angle for solar panels in the UK is facing south, at an angle between 20° and 50°. The best angle is worked out based on your location's latitude, which means the ...



### How to Find the Best Orientation and Angle of Solar ...

Putting solar panels at the optimal angle and to the best orientation is essential to obtain the maximum energy in a solar power system. To maximize the energy conversion efficiency, use proper mount brackets, and ...





### Solar panel orientation: how to define it correctly

How to orient the photovoltaic panels. The higher energy efficiency of a photovoltaic system doesn't only originate from the quality of the system, but also from the orientation and inclination of the photovoltaic ...



### Solar Panel Placement: Science Behind Optimal ...

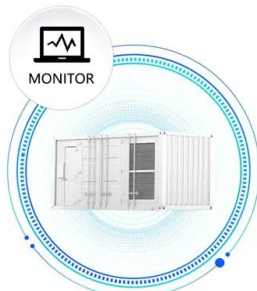
Choosing the right location and orientation for your solar panels is more than just finding a sunny spot on your roof. The science behind solar panel placement is intricate and involves understanding how angles and ...

### [Solar Panel Tilt Angle Calculator](#)

To maximize efficiency and reduce energy costs, you'll want to find the best solar panel tilt angle for your solar power system. When the sun is lower in the sky, solar panels need a greater tilt ...



SUPPORT REAL-TIME ONLINE MONITORING OF SYSTEM STATUS



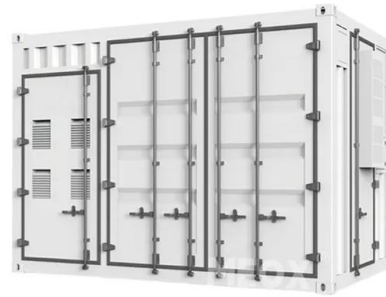
### The Ultimate Guide to Solar Panel Roof Mounts: ...

Maximizing the Benefits of Solar Panel Roof Mounts. When it comes to maximizing the benefits of solar panel roof mounts, there are several strategies to consider. By optimizing panel placement and orientation, ...



### Choosing the Right Roof Solar Panel Mounting ...

Solar energy has become an increasingly popular and sustainable choice for powering homes and businesses. If you're considering a rooftop solar panel installation, it's crucial to understand the significance of ...



### Mounting Solar Panels: A Complete Beginner's Guide to Installation

See also: Solar Panels Vertical Or Horizontal (Which Orientation Is Best!) Step 1: Marking Roof Rafters. As simple as it may seem, marking roof rafters is an essential step. It ...

### A Full Guide to Solar Panel Placement and Installation

There are two things you need to keep in mind when it comes to solar panel orientation: direction and angle. They can also help you choose the best location for the ...



### How to Choose A Solar Panel Mounting Bracket? The ...

The role of solar panel mounting brackets is twofold: Secure Attachment: Mounting brackets act as a secure base, anchoring solar panels firmly to the chosen surface. Mounting brackets enable precise positioning and ...



## Comprehensive Guide for Solar Panel Mounting ...

Selecting appropriate mounting hardware is vital for solar panels' optimal performance and longevity. The suitable mounts secure the panels firmly and influence their energy absorption efficiency by positioning ...



### [How to choose a solar photovoltaic bracket](#)

Different design methods of solar photovoltaic brackets can make solar modules make full use of local solar energy resources, so as to achieve the maximum power generation ...

## Solar Panel Brackets: The Ultimate Guide, types and best options.

In conclusion, solar panel brackets are an essential component of a solar panel system. They provide a secure and reliable mounting solution for solar panels, while also ...



## Solar Panel Install

Elevation - the optimal elevation for a photovoltaic installation is 40° from horizontal. This has been calculated to give you the maximum exposure during all seasons i.e. the low sun in ...



### How to Install Solar Panel Brackets?

Use ratchet straps or similar methods to secure the solar panels to the brackets. How Far Apart Should Solar Panel Brackets Be? The distance between solar panel brackets is significant for ...



### Solar Panel Tilting Mechanism (Motorized Kits + Diy)

The brackets holding the solar panel to the surface; The actuator that lifts the solar panel (often contains the computer component) The rotation between the frames allows ...

### "Solar Panel Mounts: Choose the Right System for Your Needs

Solar Panel Rail forms an integral part of a solar panel mounting system, acting as the foundation upon which solar panels are securely installed. These rails, typically constructed from robust, ...

- LIQUID/AIR COOLING
- INTELLIGENT INTEGRATION
- PROTECTION IP54/IP55
- BATTERY /6000 CYCLES



### Rooftop Solar Mounting Structures: Choose the Right One?

Choosing the right mounting structure for rooftop solar systems is crucial for optimal performance and efficiency. Whether it's for a home, a commercial carport, or a ground setup, the type of ...



## How to Choose Solar Balcony Mounting Brackets?

- Adjustable Brackets: These brackets allow for adjustments in the angle and orientation of the solar panels, ensuring optimal sunlight exposure throughout the day. 3. ...



## [How To Choose Roof Photovoltaic Brackets](#)

Although it may not be the best inclination angle for photovoltaic power generation, the cost of transformation brought about by increasing the inclination angle also ...

## Contact Us

For catalog requests, pricing, or partnerships, please visit:  
<https://www.vdbconstruction.co.za>