

# How to connect ecoflow solar panels





## Overview

---

Open and unfold the EcoFlow Solar Panel. Adjust the solar panel on the Kickstand Case. Attach the solar panel onto the Kickstand Case using the snap hooks. Connect the solar panel MC4 Connector to the MC4 to XT60 Cable (Solar Charging Cable, sold separately) and connect the MC4 to XT60 Cable to the XT60 port on the EcoFlow power station. How to use ecoflow solar panels?

In order to increase the efficiency of the EcoFlow Solar Panel, use it in direct sunlight, position it perpendicular to the sunlight, and make sure the solar panels are unobstructed. 6 The carrying case also doubles up as a kickstand, which enables you to position the solar power in a 60° to 90° angle. 1.

Can I connect third-party solar panels to my ecoflow power station?

While EcoFlow produces its own line of solar panels, many users wonder if they can connect third-party panels to their EcoFlow power stations/solar generators. The answer to that question is: Yes, as long as the panel's voltage is compatible with the solar charge controller in the power station.

What are ecoflow power kits?

For more robust and permanent off-grid solar panel systems, the EcoFlow Power Kits contain the charge controller and inverter in the same power hub, saving space and hassle. Once you have your solar panels, portable power station, and balance of system (if required), you're ready for installation. 6. Gather the Necessary Tools and Components.

What is ecoflow & how does it work?

Since its founding in 2017, EcoFlow has provided peace-of-mind power to customers in over 85 markets through its DELTA and RIVER product lines of portable power stations and eco-friendly accessories. Setting up a solar panel system for home use requires preparation and several steps.

Does ecoflow have a charge controller?



Most power stations, and all EcoFlow models, have built-in solar charge controllers, which is why they are often referred to as solar generators. The charge controller regulates the electricity produced by the panel and charges the battery at a safe speed. Because of this, you should not connect a panel that has an external charge controller.

How to connect solar MC4 to ecoflow portable power station?

1. Connect the positive poles of the solar panels with the positive poles of the Solar MC4 Parallel Connection Cable. Connect the 2. Connect the parallel cable connectors (output side) with the 3. Connect the XT60 connector on the MC4 to XT60 Cable to the XT60 port on the EcoFlow portable power station.



## How to connect ecoflow solar panels

LFP12V100



### [How to Connect Solar Panels To Your Home](#)

Setting up a solar panel system for home use requires preparation and several steps. Here's how to connect solar panels to your home's electricity. 3. Purchase Your Solar Components Once you know what you ...

### How Do You Connect Solar Panels to a Portable Power Station?

3. Connect the Cables The final step is simple: plug the panel into the portable power station's input jack marked "DC In" or "Solar Input." In some cases, such as a rooftop array, you may need a solar extension cable so that the panels can reach the unit. If you are



### [Your Guide to EcoFlow Delta Pro Solar Panels](#)

EcoFlow Delta Pro Solar Panel Performance So, how well does the Delta Pro charge in the sun? Well, the panels you can buy with your system will either offer 200W or 400W input, and the system can take up to 1600W at a time. Consequently, on an average day

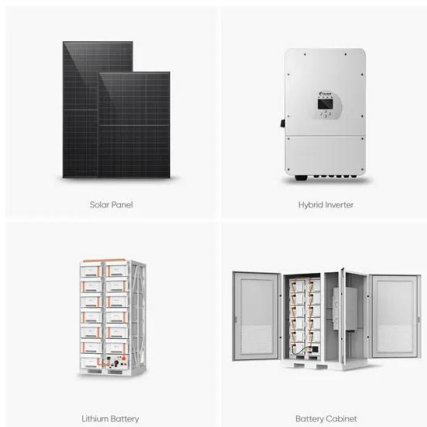


### EcoFlow DELTA Pro FAQ: Everything You Need to Know

The solar charge input for 1 x EcoFlow DELTA Pro is 1.6kW, meaning you can connect up to 8 x 400W portable or rigid solar panels. By chaining 2 x EcoFlow DELTA Pros together using the Double Voltage Hub, you double the solar input



capacity to 3.2kW or 16 x 400W rigid solar panels.



### The Ultimate Guide to EcoFlow Solar Panel Specs

Cell Type indicates the type of cells used in the solar panel. Cell types include monocrystalline, polycrystalline, and thin film. All of EcoFlow's solar panels all monocrystalline silicon, including the 400W Rigid Solar Panel ...

### Step-By-Step How to Tutorial Videos , EcoFlow US

Need to maximize the benefits or troubleshoot your EcoFlow Portable Power Station, Solar Panel, Smart Devices, & more? Watch & Learn with Video Tutorials. Products Series Product Scenarios Explore Support Cooperation Home Battery Welcome to Tutorial



### [How to Connect Solar Panels](#)

Using an EcoFlow Solar to XT60/XT60i Charging Cable, connect the panel closest to the EcoFlow DELTA Pro portable power station. The EcoFlow DELTA Pro is not waterproof and must be sheltered in weatherproof ...



## How to Set Up a Solar Panel System: Step-by-Step Guide

10. Connect the Solar Panels to the Battery With everything mounted and wired, it's time to connect the solar panels to the charge controller or power station. The precise setup will depend on whether your PPS has a built-in charge controller. You need to



### [60W Portable Solar Panel User Manual](#)

You can connect the panel to an EcoFlow portable power station to store power, or to an EcoFlow smart device to power the device directly. When using the panel with your ...



## How to Wire Solar Panels in Series [Expert Guide]

You can connect multiple solar panels in series or parallel--but the series method is recommended. EcoFlow's Power Kits use a combination of rigid and flexible solar panels to maximise solar power generation off-grid. Make sure the construction of your



## How To Connect Third-Party Solar Panels To Goal Zero Yeti

Let's talk about how to connect a third-party solar panel from brands like Renogy, HQST, Newpowa to a Goal Zero Yeti Power Station with MC4 adapters and cables.



## How To Mount Solar Panel -- A Step-by-Step DIY Guide

6. Connect Multiple Panels (Optional) You can connect multiple solar panels either in series or in parallel. However, there should not be less than a 20mm (3/4") gap between two adjacent solar panels. The distance between the frame of a singular solar panel and



## How To Install Solar Panels on a Home Roof & Connect Them

How to Install and Connect Solar Panels on a Roof - Step by Step Now let's get into the nitty gritty: installation! it isn't the end of your solar journey. EcoFlow offers a range of portable solar panels that can be used with portable power stations (such as the )



## EcoFlow DELTA Pro FAQ: Everything You Need to ...

The number of solar panels you can connect to EcoFlow DELTA Pro depends on numerous factors, including Open-Circuit Voltage (Voc) and rated power output. DELTA Pro has a maximum solar input of 1600W (11-150V ...

### Home Energy Storage (Stackble system)



**Product Introduction**

- Scalable from 10 kWh to 50 kWh
- Self-Consumption Optimization
- Integrated with inverter to avoid the compatibility problem
- LFP battery, safest and long cycle life
- Stackable design, effortless installation
- Capable of high-powered Emergency-Backup and Off-Grid Function



## Connecting Solar Panels in Series or in Parallel?

EcoFlow 400W Solar Panels weigh 21.8kg and have dimensions of 172.2cm x 113.4cm x 3.5cm. Step 7: Connect Solar Panels to Your Home Circuit Board and Wiring Integrating an EcoFlow DELTA Pro and your 400W rigid solar panels to your home circuit



## How To Combine EcoFlow Solar Panels To Increase Charging ...

EcoFlow is known for its powerful and popular portable power stations, also known as solar generator, but they also make and sell great solar panels. The biggest reason to combine two or more panels is pretty obvious, to increase the charging speed and generate as much electricity as possible while the sun is shining.



### [160W Portable Solar Panel User Manual](#)

You can connect the panel to an EcoFlow portable power station to store power, or to an EcoFlow smart device to power the device directly. When using the panel with your devices, please make sure the maximum output parameters<sup>1</sup> of the ...

### [How To Connect Solar Panels to an Inverter](#)

5. Connect the Solar Panels to the Charge Controller Now, connect your photovoltaics to your charge controller if they're not built in. 6. AC Wiring After connecting the panels, batteries, charge controller, and inverter, next we connect the AC output from the



### How To Use A Jackery Solar Panel With EcoFlow Power Stations

Connect A Jackery Solar Panel To EcoFlow Delta Power Station Before we get to the adapter needed to make the connection, let's talk about what we are trying to do here. The connector on the SolarSaga Jackery makes the SolarSaga in three different sizes



### How To Connect Portable Solar Panels to an EcoFlow Portable ...

In this video, we'll show you how to connect and set up portable solar panels. We'll cover chaining your solar panels in series, linking them in parallel, an



### How to Set Up a Solar Backup Generator: A Step-by-Step Guide

Each portable power station will also have a limit to how much solar power it can accept -- you can't just connect an unlimited number of solar panels to meet your needs. For example, the EcoFlow DELTA 2 has a maximum solar input capacity of 500W. 5.

### Anker Portable Power Stations: Connect Any Solar Panel

Learn how to connect solar panels to Anker power stations. Discover compatible models, input limits, EcoFlow 110W - MC4 connectors, 18.4V Vmp. Elecaenta 120W - Read my review of this product here. Includes several connectors compatible with



### How to Maximize Your EcoFlow Delta 2 Solar Charging

Connect the two solar panels and then connect the open ends to the EcoFlow Delta 2. When you plug it in, the EcoFlow Delta 2 app will show you the power output. With only 165 watts (about 82 watts per panel), it's a ...



### How to Wire Solar Panels in Series [Expert Guide]

You can connect multiple solar panels in series or parallel--but the series method is recommended. Wire solar panels in series with tips from the experts. Buyer's Guides Buyer's Guides Detailed Guide to LiFePO4 Voltage Chart (3.2V, 12V, 24V, 48V) Buyer's



### [How To Install Solar Panels on a Home Roof](#)

How to Install and Connect Solar Panels on a Roof - Step by Step Now let's get into the nitty gritty: installation! it isn't the end of your solar journey. EcoFlow offers a range of portable solar panels that can be used with ...

### [EcoFlow Portable Solar Panels , EcoFlow](#)

Whether you're camping with friends, travelling in your campervan, or powering your home or garden, EcoFlow has weatherproof, portable solar panels to fit your needs. Flexible 110W Solar Panels with a protective waterproof layer fold easily for storage and travel.



### Solar Panels Compatible With EcoFlow River Power Stations

This matters when you connect solar panels to it, because the market standard is that solar panels have a positive MC4 male connector and a negative MC4 female connector. I mention it because you might find a similar adapter sold by a different vendor, but it's important that you make sure the polarity (positive to positive, negative to negative) is correct.



### How Do You Connect Solar Panels to a Portable Power Station?

Solar panels are typically sold separately so that the customer can pick the size and type of panel. However, you can get portable power stations with solar panels as package deals, such as the EcoFlow RIVER 2 with a 100W Portable Solar Panel. Can You



### How Do You Connect Solar Panels to a Portable ...



3. Connect the Cables The final step is simple: plug the panel into the portable power station's input jack marked "DC In" or "Solar Input." In some cases, such as a rooftop array, you may need a solar extension cable so that ...

## Contact Us

---

For catalog requests, pricing, or partnerships, please visit:  
<https://www.vdbconstruction.co.za>