

How to connect the colored steel tile photovoltaic panel





Overview

Can solar panels be installed on a tiled roof?

Installing solar panels on roofs is a popular choice for several reasons: low chances of shade from nearby objects, ample space that serves no other purpose, and closeness to your home. How are solar panels fixed to a tiled roof?

Solar panels are mounted on a system of rails and roof hooks. The rails float above the roof tiles.

How do I install a solar roof tile?

Laying and Blending Roof Tiles for Integrated Solar Roof Tile Installation: Ensure proper laying techniques to maintain the stability of your roof while integrating solar panels seamlessly. Blending techniques can help create an aesthetically pleasing appearance.

How do I choose the best solar panel tiles?

These considerations will help optimise energy generation. Types of Tiles Suitable for Solar Panel Integration: Choose tiles that are compatible with solar panel installations, such as plain or interlocking tiles that provide a smooth surface for mounting panels without compromising their integrity.

Can a TPO roof be installed on a framed solar panel?

It is applicable to either frameless or framed solar panels. With the mounting system, the PV module can be placed onto the color steel tile substrate with self-tapping screws and fit the high-sealing inserts with TPO roofing, said Mibet said. This means that the TPO roof mounting can perfectly connect with the roof.

Can I install solar panels on a slate roof?

Not all roofs, including tiled roofs, are suitable for solar panel installation. To



determine if your slate roof is compatible, several factors must be considered. Firstly, assess its structural integrity as solar panels add weight to the roof. If needed, reinforce or repair any weak areas before proceeding with installation.

Do you need an electrician to install solar panels on a roof?

Proper electrical connections are vital for efficient solar panel operation on a roof system. Engage a qualified electrician who specialises in solar installations to ensure compliance with electrical codes and safety standards. This is especially important for the weatherproof roof covering, such as a slate roof.



How to connect the colored steel tile photovoltaic panel

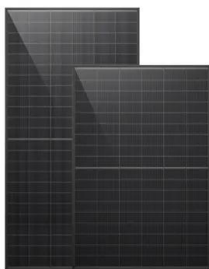


[Solar Panel Installation Guide](#)

The type of anchor used is determined by the characteristics of the existing roof tiles and the height and spacing of the roof batons. The majority of the anchor fits under the tiles with only a ...

How to Mount Solar Panels - The Methods Naked Solar Use

Above roof, tile/slate. By far the most common method for fixing Solar PV panels to a roof. Normally the lowest price it also gives the best performance as there is maximum ventilation, ...



Everything You Need to Know About Solar Panel Roofs

If you want to install a residential or commercial solar roof but don't know whether to choose a solar panel roof or a solar tile roof, then the following content is what you ...

PV-ezRack SolarRoof Tile Roof Solar Mounting System

The Clenergy PV-ezRack ® SolarRoof(TM) is designed for residential and commercial tile roof applications. This system allows installation on tile roofs. Robust design and high-quality materials. Corrosion resistance is achieved ...



How to Ground Solar Panels (Step-by-Step Instalment Process)

Never try to repair or modify your solar panel array yourself. Always hire a qualified electrician to do any work on your system. Mind connection in wet ground. Never ...

How to install solar panels on tile roof - A1 SolarStore

Tile roof for solar panels: Drawbacks and benefits. Tile roofs are most common in the Southwest: Arizona, California, Oklahoma, Texas and the surroundings. These are the ...

18650 3.7V
RECHARGEABLE BATTERY
Li-ion
2000mAh



[How To Install Solar Panels On Tile Roofs](#)

Step 4: Install the PV panels. Once you have completed the above, you will see a mesh mounting base and it is time to add the PV panels to the base. Secure the panels using clips that are bolted to the edges of the panels and into the metal ...



200kWh
Battery Cluster



Solar Panels on Steel Building

The photovoltaic bracket can be directly connected to the roof panel at the purlin by a connecting piece, or the connecting piece and the purlin can be connected by penetrating the roof panel. The above is a summary of the layout of ...

**LPR Series 19'
Rack Mounted**



A Guide to Metal Roof Solar Installation , Greentech Renewables

Greentech Renewables has organized crucial insights to help solar installers understand the most cost-effective and safest options when working on metal roof solar installations. The following ...

How to Mount Solar Panels on Tile Roof: Easy Guide

Apply a waterproof underlayment beneath the solar panel installation area to prevent water infiltration. Proper sealing and waterproofing are essential to protect your roof and interior. ...



Metal Roof Solar Mounts -Solar Panel Roof Attachments

Install the first row of S-5! clamps or brackets at the edge of the array. Mount the PV Disks and the EdgeGrab/standoff assembly to the first row of clamps. Install the first row of modules. ...



Solar Tile Roof Hooks: A Guide to Enhancing Solar ...

A pivotal component in the installation process is the solar tile roof hook, which serves as the interface between the solar panel and the rooftop tiles. These hooks are not just functional--they are tailored to meet the ...



[Color steel tile installation](#)

Color steel tile is coated with an organic coating such as PVDF material, and thus colored into a color steel plate, or galvanized steel sheet, anti-corrosive steel sheet or other thin steel sheet. ...

Installing Solar Panels on Different Roof Types

In some cases, installers might replace the original tile with a new metal version, essentially combining the tile, mounting foot, and flashing into one piece of equipment.



How to fit solar panels to A tiled Roof UK , DANLEC

Types of Tiles Suitable for Solar Panel Integration. Choosing the right type of tiles is crucial. The integration of solar panels requires careful consideration of factors such as weight, durability, ...



[A Bifacial Solar Panel Installation Guide](#)

Ground-mounted bifacial solar installations: Bifacial panels are well-suited for ground-mounted solar systems as they can capture sunlight reflected from the ground, increasing energy production. These systems allow ...



How are solar panels installed? , 11 steps explained

In this guide, we'll explain a typical solar panel installation from start to finish, as well as what all the hardware does, and where on your property you can install the panels. If you're interested in how much you could save ...



Color Steel Tile Roof Solar Panel Installation System, Photovoltaic

Color Steel Tile Roof Solar Panel Installation System, Photovoltaic Roof Solar Installation Support, Color Steel Tile US\$1.20-3.50 / Meter: 1,000 Meters (MOQ) Product Details. ...



The Ultimate Guide to Solar Panels on Metal Roofs

Why Metal Roofs and Solar Panels Are a Dream Team. Imagine a world where your roof doesn't just shelter you from the elements but also powers your home. That's the ...





How are solar panels installed on tile roof , Service

This allows for air circulation to get between solar panels and tiles and for the air circulation to cool the solar panels in the hot summer months. The rails and brackets are ...



Novel mounting structure for PV systems on ...

With the mounting system, the PV module can be placed onto the color steel tile substrate with self-tapping screws and fit the high-sealing inserts with TPO roofing, said Mibet said.

Solar Power System for Roof

Zeoluff's color steel tile roof photovoltaic bracket system has unique connection design, simple and fast installation, strong wind resistance, and can achieve installation without penetrating the roof structure. The original waterproof ...



Color Steel Tile Roof

Color steel tiles, also known as color profiled tiles. It is a color-formed steel plate that is color-coated steel plate and is cold-bent by rolling into various wave patterns. Tel: +8618638188782 ...



How to fit solar panels to A tiled Roof UK , DANLEC

Installing and Fitting Solar PV Panels on Tiled Roofs: Follow industry best practices when installing solar PV panels on tiled roofs to ensure secure attachment, weatherproofing measures, and compliance with safety regulations.



Solar Panel Fixing Options

The panels sit in place of the tiles with a flashing kit that tiled around. There are several different types of in-roof solar kits, and they are all much the same. We mainly use GSE integration and Solar Century kits. A-frames are simply ...



Color steel tile photovoltaic installation fixture

1. Suitable for color steel tile roof: color steel tile photovoltaic installation fixture is specially designed for color steel tile roof, which can easily install photovoltaic modules on such roof. 2. ...



Contact Us

For catalog requests, pricing, or partnerships, please visit:
<https://www.vdbconstruction.co.za>