

How to connect two series and three parallel photovoltaic panels





Overview

A Solar Photovoltaic Module is available in a range of 3 WP to 300 WP. But many times, we need power in a range from kW to MW. To achieve such a large power, we need to connect N-number of modules in series and parallel. A String of PV Modules When N-number of PV modules are connected in series. The entire.

Sometimes the system voltage required for a power plant is much higher than what a single PV module can produce. In such cases, N-number of PV modules is connected in series to.

Sometimes to increase the power of the solar PV system, instead of increasing the voltage by connecting modules in series the current is increased by connecting modules in parallel. The current in the parallel combination of the.

When we need to generate large power in a range of Giga-watts for large PV system plants we need to connect modules in series and parallel. In large PV plants first, the modules are.

Should solar panels be connected in series or parallel?

A parallel connection is probably the most efficient for solar panels of different capacities. If your system is more than 20 feet away, then a series connection is feasible. Whether solar arrays are to be connected in series, parallel, or combination depends on your specific expectations from the solar panel system.

How do you wire solar panels in parallel?

For instance, if you have three solar panels, you'll need a pair of 3-to-1 MC4 branch connectors. To wire four solar panels in parallel, use a pair of 4-to-1 MC4 branch connectors. Now, to wire my two solar panels in parallel, the initial step was connecting the fuses to the positive leads of the solar panels. Read more about fusing solar panels.

What is the difference between series and parallel solar panels?

Wiring solar panels in series sums the voltages, but the current remains the



same. Wiring solar panels in parallel sums the currents, but the voltage remains the same. Note: You can calculate the power output of your series and parallel wiring configurations with our solar panel series and parallel calculator.

Can a 6V solar panel be wired parallel to a 12V panel?

In this case, it is possible to wire the two 6V panels in series and then wire the resultant array in parallel to the 12V panel. However, the latter type of connection is at the expense of efficiency. It is therefore essential, before making a parallel connection, to carefully check the voltage of the solar panels.

How solar panels are connected in series?

In the series connection the voltages of all solar panels are summed up and the current is maintained the same for all the panels. The set of solar panels connected in series is known as a string. As stated before: lower voltages imply higher currents and higher voltages imply lower currents.

Can I connect two solar panels together?

Should you wish to connect two solar panels manufactured by different companies in series or parallel configurations, the manufacturers are generally not the issue. The issue remains in the conflicting electrical attributes of the solar panels, as well as their unique efficiency ratings.



How to connect two series and three parallel photovoltaic panels



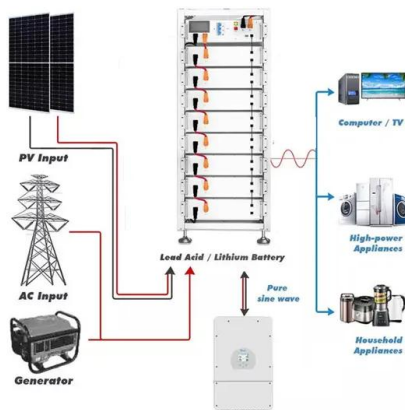
How to Wire Solar Panels in Series & Parallel

The 2 solar panels are now wired in parallel. Need to wire more than 2 solar panels in parallel? Simple -- just get the right size branch connector. For example, if wiring 3 solar panels in parallel, use a pair of 3 to 1 branch ...

Parallel Connected Solar Panels For Increased Current

The question here is how to connect the solar panels in parallel. We could connect all four together in a parallel combination (1 x 4), or connect the two 80 watt panels in series and the two 100 watt panels in series with the two series

...



Solar Panel Series vs Parallel: What's The Difference

Consulting with a solar energy professional can help design the best series-parallel configuration for your system. 2. Should 12V Solar Panels Be Wired in Series or ...

How to Connect 3 Solar Panels: A Step-by-Step Guide

how to connect 3 solar panels. Connecting three solar panels is simple. It involves mounting them, wiring, and linking them together. Then, you connect them to the ...



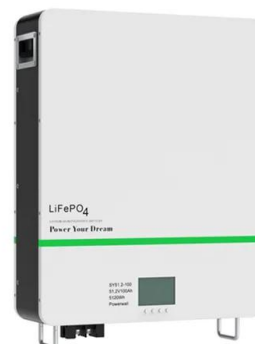
Connecting Solar Panels in Series or in Parallel: Which Is

Connecting additional PV panels in parallel increases current without increasing voltage. As a result, parallel wiring can be ideal for 12V power systems, like those found in ...



How to Wire Solar Panels in Series-Parallel Configuration?

The following solar panel and battery wiring diagram shows how to wire a four 12V Solar Panels in series-parallel connection to a 24V, 400Ah battery with an automatic inverter system. Note ...



Series vs. Parallel

For this connection, a string is created by 2 or more panels in series. Then, an equal string needs to be created and paralleled. 4 panels in series needs to be parallel with another 4 panels in series or there will be ...





A Step-by-Step Guide to Wiring Solar Panels in ...

Wiring solar panels in parallel involves connecting multiple panels together in a way that maintains voltage while increasing current. This configuration is ideal for applications that require higher power output and the ability to expand the ...

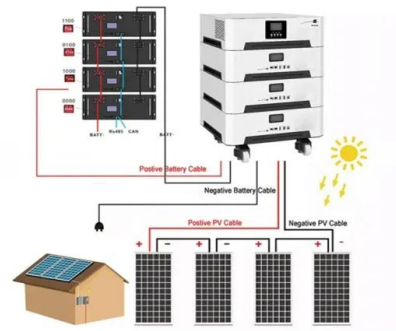


Connecting Multiple Solar Panels - Series vs. Parallel

The idea is to establish strings (series connection of two or more panels) and connect them in parallel with other strings (creating arrays of strings). This allows to obtain the ...

The Complete Guide to Solar Panel Wiring Diagrams

Generally speaking, PV module arrays with more than 2 or 3 solar panels are more likely to be wired in series rather than parallel. The physical act of wiring the panels ...



How to Wire Two or More Solar Panels in Parallel

To solve this problem and to optimize the energy performance of the entire system, it is advisable to wire two panels in series (obtaining a doubling of the voltage) and then wire in parallel the ...





Solar Panel Connection

Connecting two portable solar panels, or any other type of solar panel, (same wattage) in parallel will multiply the total power output current by 2 and keep the system voltage at the same level. ...



Connecting Solar Panels in Series or in Parallel?

Decide whether to connect your solar panels in series, parallel, or series-parallel. Parallel is often best for small systems of 2 or 3 PV panels. However, you must evaluate the optimal option for 4 x 400W rigid solar panels ...

How to Wire Solar Panel & Batteries in Parallel

In addition, The two parallel connected solar panels will charge the batteries quickly and power up extra load. (Ah) of batteries (as well as voltage level of solar panels) must be the same for ...



Connecting Multiple Solar Panels - Series vs. Parallel

The idea is to establish strings (series connection of two or more panels) and connect them in parallel with other strings (creating arrays of strings). This allows to obtain the advantages of the series connection (lower ...



Ultimate Guide to Solar Panels in Series vs. Parallel

There are two options for connecting numerous solar panels in a system: series and parallel. This blog aims to explain why wire solar panels are in series or parallel, compare their differences, pros, and cons, and discuss ...



Solar Panel Wiring Basics: Complete Guide & Tips to ...

Connect solar panels in series by following the steps in our "wiring solar panels in series" section. Connect solar panel strings in parallel by using a connector known as MC4 T-Branch Connector 1 to 2, following steps ...

How to Connect Multiple Solar Inverters Together?

Step 3: Connect the Inverters. The connection process varies based on the configuration--parallel or series: Parallel Connection: 1) DC Connection: Connect the DC input from the solar panels to the DC input ...



Wiring Up Solar Panels: Series, Parallel, or Series-Parallel

Now, let's look at a combination of series and parallel wiring, which allows us to effectively bring together four panels. We start by wiring two sets of panels in series. Then, we ...



Solar Panel Series Vs Parallel: Wiring, Differences, And Your Right

In this tutorial, I'll show you how to wire solar panels in series and how to wire them in parallel. Once we've got that covered, I'll also explain the difference between these ...



How to Connect Two Solar Panels - A Straightforward Guide

Understanding Solar Panel Connections. Series and Parallel Circuits; Connecting solar panels in series or parallel can impact your system's total power output and ...

Connecting Solar Panels Together for Increased Power

I currently have 4 200 watt rich solar panels max power voltage is 37.6. im going to add two more of the same panels. the charge controller is an ampinvt 60 amp. connected to 2 200ah 12v ...



- IP65/IP55 OUTDOOR CABINET
- IP54/55
- OUTDOOR ENERGY STORAGE CABINET
- OUTDOOR BATTERY CABINET

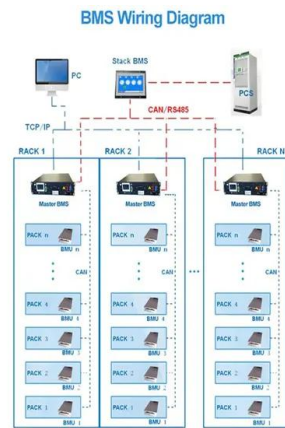
[Connecting Solar Panels: Series vs Parallel](#)

Solar Panel Connection: Series vs. Parallel Wirings. You have three ways of connecting solar panels to create a functional power setup to provide solar electricity to obtain the desired power for your house. Series connection; ...



Connecting Solar Panels in Series or in Parallel?

Decide whether to connect your solar panels in series, parallel, or series-parallel. Parallel is often best for small systems of 2 or 3 PV panels. However, you must ...



How to Connect Solar Panels in Series and Parallel

Awesome post! Connecting solar panels in series or parallel is an effective way to increase the voltage or current output of a solar panel system. Connecting panels in series ...

Wiring Up Solar Panels: Series, Parallel, or Series-Parallel

Now, let's look at a combination of series and parallel wiring, which allows us to effectively bring together four panels. We start by wiring two sets of panels in series. Then, we combine these two sets in parallel.



How to Connect Solar Panels in Parallel: A Step-by-Step Guide

Let's talk about using parallel connections in real life. Imagine hooking up three 12-volt, 5.0 ampere PV panels in parallel. You'd get 15 amperes and keep the voltage the ...



Connecting Photovoltaic Panels Methods and Best Practices

2. What is the series connection of photovoltaic panels? Series connection of photovoltaic panels involves connecting the positive terminal of one panel to the negative terminal of the next, ...



Solar Panel Connection

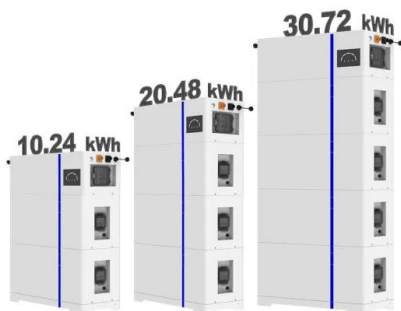
Connecting two portable solar panels, or any other type of solar panel, (same wattage) in parallel will multiply the total power output current by 2 and keep the system voltage at the same level. Parallel solar panel connections should be ...

Understanding the series and parallel connection of solar panels

The resulting effect is to produce a solar panel system with an increased amperage rating (the sum of the individual amperages in the parallel array) while the total ...



ESS



Guide to Solar Panel Parallel vs Series Wiring

What is series-parallel solar panel wiring? In series-parallel wiring, two or more identical solar panels are strung together in series alongside two or more identical modules in a separate daisy chain series configuration. ...



How to wire solar panels in series vs. parallel

The thing is, most solar panel systems are larger than 12 panels. So, to have more panels in the system, you could wire another series of panels, and connect those series in parallel. This ...



Contact Us

For catalog requests, pricing, or partnerships, please visit:
<https://www.vdbconstruction.co.za>