

How to determine the rated power of photovoltaic panels





Overview

In this solar power calculator kWh, to determine this value, use the following formula: Multiply the number of panels by the capacity of the solar panel system. Divide the capacity by the total size of the system (number of panels \times size of one panel). Why should you know the rated power of a solar panel?

Knowing the rated power of a panel makes it possible to calculate the potential yield of a planned solar installation based on the number and type of panels included. Comparing the expected yield to actual recorded production can highlight where the system is underperforming.

How do you calculate kWh generation of a solar panel?

The daily kWh generation of a solar panel can be calculated using the following formula: The power rating of the solar panel in watts \times Average hours of direct sunlight = Daily watt-hours. Consider a solar panel with a power output of 300 watts and six hours of direct sunlight per day. The formula is as follows:.

How to calculate solar panel output?

The first factor in calculating solar panel output is the power rating. There are mainly 3 different classes of solar panels: Small solar panels: 50W and 100W panels. Standard solar panels: 200W, 250W, 300W, 350W, 500W panels. There are a lot of in-between power ratings like 265W, for example. Big solar panel system: 1kW, 4kW, 5kW, 10kW system.

How to calculate annual energy output of a photovoltaic solar installation?

Here you will learn how to calculate the annual energy output of a photovoltaic solar installation. r is the yield of the solar panel given by the ratio : electrical power (in kWp) of one solar panel divided by the area of one panel. Example : the solar panel yield of a PV module of 250 Wp with an area of 1.6 m² is 15.6%.

Do solar PV panels have electrical ratings?



Solar PV panels come in a variety of different technologies and sizes, so it is important to be able to compare them fairly to one another. International standards have been developed to do just that, and the electrical ratings displayed on solar panel datasheets follow these standards.

What are the electrical ratings on solar panel datasheets?

International standards have been developed to do just that, and the electrical ratings displayed on solar panel datasheets follow these standards. Standard Test Conditions (STC) are the industry standard conditions under which all solar PV panels are tested to determine their rated power and other characteristics.



How to determine the rated power of photovoltaic panels



Calculation & Design of Solar Photovoltaic Modules ...

In an off-grid system, the modules are used to supply the power to the load and charge the battery. During the night when there is no sunlight, the module produces no energy and the charge batteries start supplying power to the load ...

STC, PTC, NOCT: What do they mean and how to use ...

STC is used by solar panel manufacturers to test and rate their panels. The value that interests us is the maximum power (P_{max}) or rated power (P_r), which is the nominal power of a solar panel when you look to buy one. It could also be ...



[Solar Panel Series & Parallel Calculator](#)

2. Enter the panel's max power voltage (denoted V_{mp} or V_{mpp}). It may also be called the optimum operating voltage. 3. Enter the panel's max power current in amps (denoted I_{mp} or I_{mpp}). It may also be called the ...

[How to Calculate Solar Panel kWh](#)

How many kWh Per Day Your Solar Panel will Generate? The daily kWh generation of a solar panel can be calculated using the following formula: The power rating of the solar panel in watts \times Average hours of ...



Calculate Solar Panel kWp & kWh (kWh Vs. kWp + Meanings)

The efficiency rating of a solar panel refers to its ability to convert sunlight into usable energy. So, if a panel has an efficiency rating of 15%, it can harness 15% of the ...



Calculating Solar PV String Size - A Step-By-Step ...

The voltage of a solar panel is not fixed. As the temperature of a panel increases, its voltage decreases, and as its temperature decreases, its voltage increases. The rate at which the open circuit voltage of a solar panel will change as its ...



What is rated power and how is it used in solar design?

Knowing the rated power of a panel makes it possible to calculate the potential yield of a planned solar installation based on the number and type of panels included. Comparing the expected yield to actual recorded ...



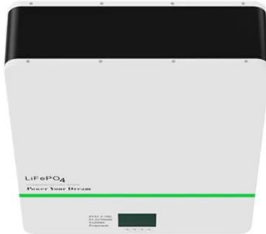
[Solar Panel Sizes and Wattage Explained](#)

How to Calculate Solar Panel Sizes and Wattage. When designing an efficient and cost-effective PV system for your house, this calculation is a must. You can perform it ...



[Solar Panel Power Calculator](#)

Solar Panel Calculator is an online tool used in electrical engineering to estimate the total power output, solar system output voltage and current when the number of solar panel units ...



How to calculate the annual solar energy output of a photovoltaic ...

r is the yield of the solar panel given by the ratio : electrical power (in kWp) of one solar panel divided by the area of one panel. Example : the solar panel yield of a PV module of 250 Wp ...



How to Test, Calculate And Maximise Your Solar Panel Output

Determine the rated output of your solar panel system. Several key parameters should be considered to measure solar panel power output and assess solar cell ...





How To Calculate Solar Panel Output , 60 Hertz

Learn to estimate solar panel energy production by understanding key factors affecting output, ensuring optimal performance for homes and businesses. you should know how to calculate ...



How to Calculate the Surface Area Required by Solar Panels

With the bright light conditions and the efficiency as measured, calculate the size of solar panel required to power: A ratio of average power demand approximately 0.1 ...



[How to Calculate Voc of Solar Panel](#)

How to Calculate the Voc of Solar Panel: To calculate the Open Circuit Voltage (Voc) of the panel, youâEUR(TM)ll need a voltmeter. Close Menu. About; EV; FAQs; Glossary;



[How Is Solar Panel Efficiency Measured?](#)

To incorporate the impact of temperature on the power output of the solar panel, the TC must be used to adjust the panel's power output for the actual temperature. Here are the steps to calculate the efficiency of a solar ...



How To Calculate Solar Panel Output

Calculating the output of your solar panels isn't as simple as you might think. While the rated power (e.g., 100W or 400W) indicates the maximum amount of electricity a PV panel can generate per hour, many factors come ...



Solar Panel Efficiency Calculator and Formula - Dot Watts®

how to use solar efficiency calculator? 1 - Enter solar panel maximum power output (P max).For example, Enter 100 for a 100 watt solar panel. The value should be ...

How to Test Solar Panels: Output, Amps & Watts

2. Connect the power meter inline between the solar panel and charge controller. Throw a towel of the panel during this step. 3. Remove the towel and place your ...



Calculating the Kilowatt Hours Your Solar Panels Produce (Solar Panel ...

DC rating = AC rating / derate factor (.8 is conservative, but a range would be .8 - .85) example: 6.02 kW AC / .8 = 7.53 kW DC. Number of panels = DC rating / Panel Rating ...



How To Calculate Solar Panel Output

Calculating the output of your solar panels isn't as simple as you might think. While the rated power (e.g., 100W or 400W) indicates the maximum amount of electricity a PV ...

SUPPORT REAL-TIME ONLINE MONITORING OF SYSTEM STATUS



How to Calculate Solar Panel KWp (KWh Vs. KWp)

Calculating the KWp rating or kilowatts peak rating of a solar panel is essential for determining its peak power output. KWp represents the panel's maximum capacity under ideal conditions. In this comprehensive ...

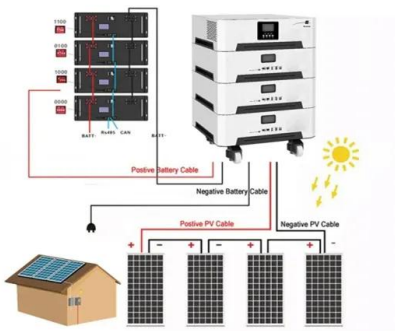
How to Calculate Your Solar Panel Output (4 Steps)

Step 1: Know Your Panel's Power. Every solar panel comes with a wattage rating, which indicates its maximum power output under ideal conditions. This information is ...



Solar Panel Wattage & Output Explained

Solar panel efficiency is a measure of total energy converted into electrical energy and is usually expressed as a percentage. Residential and commercial solar panels ...





Contact Us

For catalog requests, pricing, or partnerships, please visit:
<https://www.vdbconstruction.co.za>