

How to disassemble the box behind the photovoltaic panel





Overview

Can a junction box replace a solar system?

With care and proper precautions, junction box replacement can restore your solar system functionality. Critical process steps include – Step 1: Preparation and Module Placement.

How do you know if a solar junction box is faulty?

Being able to recognize the signs of a faulty solar junction box is crucial for system maintainers and installers. Some key indications your PV junction box may require replacement include – Discolored or burnt terminals: This can indicate overheated connections which can lead to failure over time.

What are the different types of Solar junction boxes?

Common solar junction box types include string boxes (in-line wiring), racking mounts (attached directly to the panel frame), array boxes (multiple combined connections), and custom junction boxes for specific panel models. Do I need a combiner box for 4 solar panels?

.

How do I know if my PV junction box needs replacement?

Some key indications your PV junction box may require replacement include – Discolored or burnt terminals: This can indicate overheated connections which can lead to failure over time. Cracked enclosure: Cracks allow moisture and dirt inside, leading to ground faults and corrosion.

What should I do if my solar inverter goes off?

If it trips back to the off position, leave it off and call an engineer. Also check your inverter for any fault codes or error messages. Check the real-time and cumulative generation on your inverter (most have these options) to make sure that the solar panels are still generating electricity.



How do I know if my solar module has been replaced?

Check the module's open circuit voltage with a multimeter. Confirm the successful replacement if the parameters are within the specified range.
NOTE: Contact a solar specialist immediately if the replacement junction box shows signs of failure or overheating.



How to disassemble the box behind the photovoltaic panel

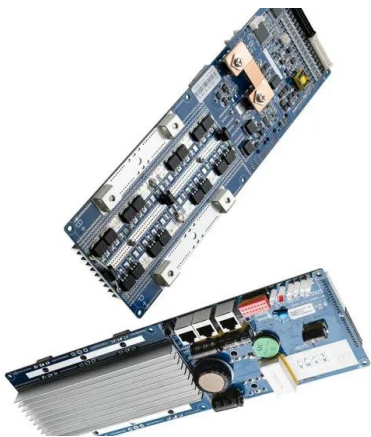


When Do You Need to Fuse Solar Panels? (and how to do it)

Remember that with parallel wiring the amperage increases, so the total short circuit current of this solar array is 36.27 Amps (12.09A x 3 panels = 36.27A).. In the event of a ...

Photovoltaic Panels

This is best known as the "photovoltaic effect," which is where photovoltaic panels get their name from. This is then converted to alternating current. The Photovoltaic Effect. The science behind ...



How to Repair Broken Solar Panels (Steps to Repair ...)

Once the solar panel is removed, you can now proceed to the next step. The next step is to identify the cause of the problem. The most common cause of a broken solar panel is cracked glass. If the glass on your ...

How To Build A Photovoltaic Solar Panel [9 Easy Steps]

Buying a solar panel has its perks, but building it is another story. If you want to DIY your solar PV panels, check this article to find out how. Call now. Our Courses . Attach the junction box at ...



How Do Solar PV Panels Work Exactly?

Each solar panel is made of several such PV cells and PV installations usually consist of multiple panels to form a PV array. The more PV panels, the larger the array, and ...



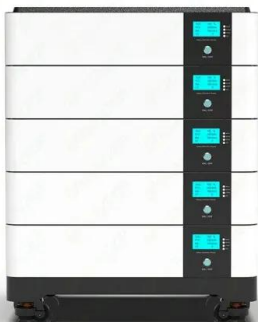
Solar Panel Recycling: Why and How to Recycle Solar ...

To recycle the most common type of solar panel, which use crystalline silicon to generate electricity, SOLARCYCLE's team removes the junction box and frames, slices the panel open, grinds up the bits that remain, ...



How to wire a solar junction box and assemble PV cables

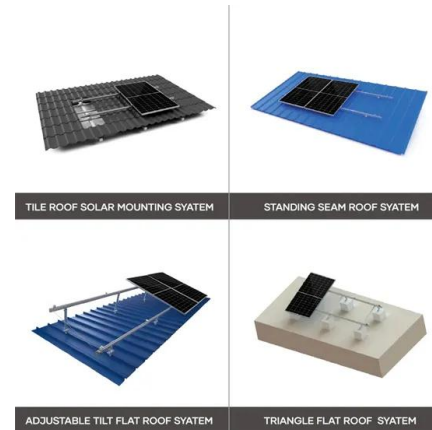
Learn how to repair, replace or rewire a solar junction box, as well as how to assemble PV wire for the rest of your solar electric system using MC4 connecto





Blocking Diode and Bypass Diodes in a Solar Panel Junction Box

Bypass Diode in a solar panel is used to protect partially shaded photovoltaic cells array inside solar panel from the normally operated photovoltaic string in the peak ...



The Complete Guide to Solar Panel Wiring Diagrams

On the other hand, if you're connecting 42 x EcoFlow 400W rigid solar panels to 3 x DELTA Pro Ultra Inverters + Home Backup batteries, the diagram will be considerably ...

[How to Remove Solar Panels](#)

In this guide, we will cover the steps you need to take to remove your solar panels, including how to disconnect them from the electrical system, how to safely remove the mounting hardware, ...



[How do photovoltaic \(PV\) panels work](#)

Photovoltaic (PV) panels, also known as solar panels, are a technology that converts sunlight into electricity. This process is achieved through the use of semiconductors, ...





What Is Solar Panel Junction Box? (Detailed Guide)

A solar panel junction box is a critical component of any solar energy system, allowing the safe connection between the photovoltaic (PV) panels and the rest of the electrical system. This device is designed to provide ...



How To Replace A Faulty Solar Panel Junction Box?

Recognizing the signs of a failing junction box is crucial for maintaining your solar panel system's performance and safety. Here are key indicators that your junction box ...

Solar Panel Maintenance Guide: How To Repair Solar Panels

Table of Contents The continuous rise in energy billing costs and the carbon footprint that most traditional power sources leave behind as fallout residues are



2MW / 5MWh
Customizable

Broken Solar Panel Glass Repair (Simple) : 4 Steps

Clean off the panel, just make sure its nice and clean for best results. Mix your resin following instructions on the can (three quarters of a margarine container covered my whole panel ...



Solar Panel Fixing Options

An in-roof solar panel system sits on top of the roofs battens and is then tiled or slated around. It is possible to create a whole roof out of solar panels using an in-roof system. Making the ...

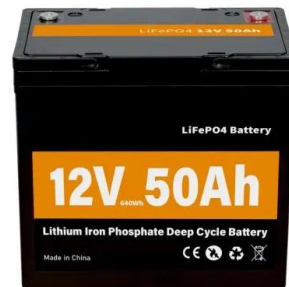


How To Transport Solar Panels SAFELY: Best Practices Guide

Solar panel orientation while packing may seem like a minor detail, but it can have significant impacts. Packing solar panels can be done either vertically or horizontally, with each method ...

Solar Panel Problems And How To Solve Them

Solar panel grants and solar buyback explained. Get expert advice on the top solar panel problems owners face and how to solve them. Solar panel inverter problems, dirty solar panels, pigeon problems under solar ...



How to Fix Junction Box on Solar Panel? , Maysun Solar Factory

The junction box installation is one of the key steps in the assembly process of PV modules, using semi-automatic production methods to complete the four ste



11 Common Solar Panel Defects and How to Avoid Them

A junction box at the back of a solar panel is the key interface to conduct electricity to the outside. If water or dust seeps into the junction box enclosure, the bypass ...



How to replace the junction box of the solar panel

How to replace the junction box of the solar panel. The junction box of the solar panel is waterproof, but sometimes the diode in the junction box can also cause problems .

Solar Backsheet: A Comprehensive Guide on PV ...

The solar panel's overall efficiency and lifespan can be affected by a backsheet that has inadequate weatherability, as it may crack or get delaminated. Electric Insulation. Electric insulation refers to the resistance to electric flow. The ...



OEM service

Hot Colors:



Color can be customized more questions just do not hesitate to contact us

LOGO Position: (Screen printing)



[JA Solar]Instructions for replacement of Solar Panel ...

From <https://youtu /1DaAtCXSJLo>Instructions for replacement of Solar Panel Junction BoxCopy © JA solarWhatsApp: +8613554255933 Mail: info@ooitech Kindly

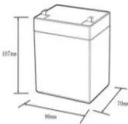

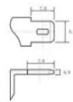


What Are the Basics Behind Photovoltaic Solar Panels?

Monocrystalline PV panels are by far the most established option on the market. Sleek and streamlined, the solar cells inside a monocrystalline PV panel consist of a single ...



12.8V6Ah

- Nominal voltage (V):12.8
- Nominal capacity (ah):6
- Rated energy (WH):76.8
- Maximum charging voltage (V):14.6
- Maximum charging current (a):6
- Floating charge voltage (V):13.6-13.8
- Maximum continuous discharge current (a):10
- Maximum peak discharge current @ 10 seconds (a):20
- Maximum load power (W):100
- Discharge cut-off voltage (V):10.8
- Charging temperature (°C):0-+50
- Discharge temperature (°C): -20-+60
- Working humidity: $\leq 95\%$ RH (non condensing)
- Number of cycles (25 °C, 0.5C, 100%DoD): >2000
- Cell combination mode: 32700-4s1p
- Terminal specification: T2 (6.3mm)
- Protection grade: IP65
- Overall dimension (mm):50*70*107mm
- Reference weight (kg):0.7
- Certification: un38.3/msds

[Solar Panel Repair 101: A Comprehensive Guide](#)

The average solar panel repair cost is \$750 (USD) but can range from \$120 to \$3,000. Solar panel cleaning and maintenance costs are around \$8 - 25 (USD) per panel, or ...

[How to open solar panel junction box? - ...](#)

In this article, we'll explain how to open a solar panel junction box safely and effectively. Step 1: Turn off the Power. Before opening the junction box, it is essential to turn off the power source. Solar panels generate ...



[Solar Panel Shading Problems & Solutions](#)

Diodes in panels with a serviceable junction box can be tested by disconnecting the solar panel from the array and using a multimeter to test the bypass diode directly. A ...



How To Replace A Faulty Solar Panel Junction Box?

Steps to Replace a Solar Panel Junction Box. Replacing a solar panel junction box requires careful attention to detail and proper safety precautions. Follow these steps for a ...



How to Check Solar Panel Polarity (Reverses + Fixes)

A solar panel's polarity is essential when installing or replacing a solar panel. Solar panels are polarized to generate more power during the day, but if your system is not set ...

Contact Us

For catalog requests, pricing, or partnerships, please visit:
<https://www.vdbconstruction.co.za>