

How to fix electric power steering system

OEM service



Hot Colors:



Color can be customized
more questions just do not hesitate to contact us

LOGO Position: (Screen printing)





Overview

An electric power steering system uses an electric motor to assist the driver when turning t.

If the EPS system fails while driving, it will become more difficult to steer the vehicle. This can make it difficult to keep the car in its lane and may even cause the vehicle to veer off course. I.

Several symptoms can indicate that the EPS system is failing. The most common symptoms include: 1. EPS Warning Light 2. Loss of Power Assist 3. Vehicle Pulling to One Direction 4.

Electric power steering (EPS) is a vehicle steering system that uses an electric motor to assist the driver in turning the wheels. This system replaces the traditional hydraulic power steering system, which uses hydraulic fluid to help the driver. EPS is a newer technology that offers several advantages over hydraulic.

An electric power steering system uses an electric motor to assist the driver when turning the steering wheel. The motor is connected to the steering column and interacts.

If the EPS system fails while driving, it will become more difficult to steer the vehicle. This can make it difficult to keep the car in its lane and may even cause the.

Several symptoms can indicate that the EPS system is failing. The most common symptoms include: 1. EPS Warning Light 2. Loss of Power Assist 3. Vehicle Pulling to.

Are You facing problems with your electric power steering system?

If you're facing issues with your Electric Power Steering (EPS) system, it's important to identify the problem and find a solution. Here are some common EPS problems that car owners often encounter: Loss of Power Assist: One of the most common problems with EPS is a sudden loss of power assist.

What is electric power steering?



Electric power steering (EPS) is a vehicle steering system that uses an electric motor to assist the driver in turning the wheels. This system replaces the traditional hydraulic power steering system, which uses hydraulic fluid to help the driver.

How do I Reset my electric steering?

Examine your fuse box, look for obvious faults with your wires and connections, and check the voltage in your battery. Assuming those actions don't work, here's a quick (possible) fix - shut your car off completely and restart it. This helps reset the electrical components, and your electric steering might come back.

Why does my electric power steering system fail?

When it comes to electric power steering (EPS) system failures, control unit issues are often to blame. The control unit is the "brain" of the EPS system, and it's responsible for interpreting sensor data and sending commands to the motor. If there's a problem with the control unit, it can cause the EPS system to fail.

How do I contact electric power steering (EPS)?

Contact us today, either by filling in our easy online form or giving us a call on 0208 853 3343. Tags : Electric Power-Assisted Steering, EPS System, Power Steering Specialist, Steering System, Torque Sensor. Problems with your Electric Power Steering (EPS) system?

.

What are the most common Ford electric power steering problems?

Alignment issues: One of the most common Ford electric power steering problems is alignment issues. You can also encounter this issue on other electric power steering vehicles. Alignment issues simply mean situations where the EPS provides more assistive torque and speed in one direction than the other wheel.



How to fix electric power steering system



[How to Fix Your Power Steering Problems](#)

I believe your car has an electronic power steering system, meaning there is an electric motor mounted to the steering column that assists you in turning the steering wheel. Our best guess would be that this motor malfunctioned and turned your car even when you weren't attempting to.

[Straightening out GM electric power steering](#)

Editor's Note: This article has been updated from its original 2011 version. GM vehicles have used electric power steering (EPS) systems for over a decade now, so odds are good you've already worked on a vehicle using the system. Interestingly, it's not just



Mercedes-Benz Electric Power Steering Motor Replacement

We hope you find the Mercedes-Benz Electric Power Steering Motor Replacement guide helpful. Check these troubleshooting and repair guides for more help on Disclaimer: YOU CANIC is a participant in the Amazon Services LLC Associates Program and the eBay Partner Network, affiliate advertising programs designed to provide a means for sites to ...

[How Does Electric Power Steering Work?](#)

Introduction: GM vehicles have used electric power steering (EPS) systems for almost a decade now, so odds are good you've already worked on a vehicle using the system.



Interestingly, it's not just expensive or luxury ...



1075KWHH ESS



How To Easily Fix Power Steering Assist Faults In ...

Defective power steering control module (in electric systems) These and other issues mean your [[steering assist]] isn't fully helping your steering system when you turn the wheel. The level of assistance drops ...

Electric Power Steering Problems

To fix the steering angle sensor, you need to recalibrate it to send accurate data to the electric control unit (ECU). Once recalibrated, the ECU will start providing the required amount of assistive torque and speed.



How Do I Reset My Electric Power Steering? And Does It Really ...

There are two ways to do this: 1. Simple Restart. Resetting the EPS is simple enough. All you have to do to get the light to turn off and reset the system is stop and restart ...



Diagnosing Electrical Power Steering (EPS) Issues

Electric steering is a non-hydraulic system assisted by an electric motor operated by a software-driven power steering module. EPS DIAGNOSTICS Scan tool screen capture 3 - The torque sensor signal inputs are displayed as positive and negative voltages, as are

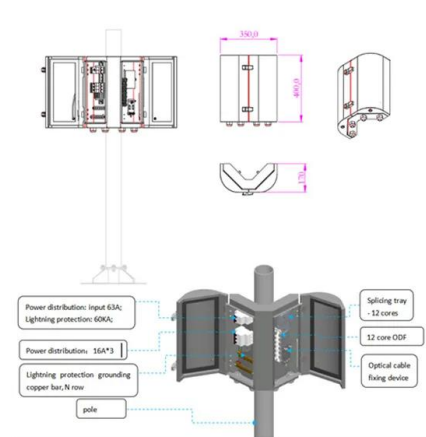


3 Common Ram 1500 Electric Power Steering Problems

Electric power steering (EPS) systems in Ram 1500 trucks can be impacted by environmental factors such as cold weather and road salt, as well as water intrusion and corrosion. These factors can lead to significant performance issues and costly repairs.

Diagnosing Electrical Power Steering (EPS) Issues

In other configurations, the EPS module, steering torque and steering position sensors can be individually replaced. Although configurations might vary, the basic electric ...



Signs And Dangers Of Electric Power Steering Failure: What You ...

Discover the symptoms of electric power steering failure and why addressing it promptly is crucial. Learn how ignoring repairs can compromise road safety and lead to further damage. Find out common causes, steps for addressing the issue, and the importance of seeking professional assistance. Maintain vehicle control, prevent costlier repairs, and enhance road ...



Honda Civic Check Power Steering System: Causes & Fixes

How to fix a Honda Civic Check Power Steering System The first step to fix a "check power steering system" is to determine the warning message's cause. You can do this with the help of an OBD2 scan tool. You only need to scan for failing parts of the steering

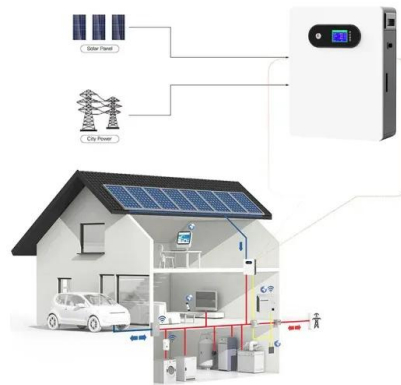


Ford Electric Power Steering Doesn't Work: Common Causes

How to Fix Ford Electric Power Steering Doesn't Work Issue Unlike traditional hydraulic systems, EPS relies on an electric motor to provide steering assistance, improving fuel efficiency and reducing maintenance requirements. Ford has been having problems

Understanding the Basics: Electric Power Steering System ...

Electric power steering (EPS) is a modern technology that has replaced traditional hydraulic systems in many vehicles. This advanced system provides drivers with enhanced control and responsiveness, improving the overall driving experience. Understanding how



Solving EPS Problem In Your Car (Expert Tips & Tricks)

Understanding the Electric Power Steering (EPS) system and its components is crucial for effectively diagnosing and solving EPS problems in your car. By having a basic ...



Common electric power steering failures and their diagnosis

In the online course "EPS Unit Diagnosis and Repair" you can learn the ins and outs of diagnosing EPS faults and how to fix problems with the electric power steering. In this course, we show you how you can quickly and easily find an EPS fault using the MS561 tester .



Fungsi, Komponen, dan Cara Kerja Electric Power Steering!

Electric Power Steering, sistem kemudi pada kendaraan bermotor yang menggunakan motor listrik untuk bantu pengemudi menggerakkan roda kemudi. Beranda » Ketahui Fungsi, Komponen, dan Cara Kerja Electric Power Steering! Ketahui Fungsi, Komponen, dan

Solving EPS Problem In Your Car (Expert Tips & Tricks)

Learn how to effectively solve EPS problems in your car with this comprehensive guide. Explore the components of the Electric Power Steering system and gain the knowledge needed to diagnose and fix issues. Discover when it's necessary to seek professional help, ensuring the safety and proper functioning of your vehicle.



How To Fix 2010 Ford Fusion Electric Power Steering

Unlike older vehicles that use hydraulic power steering systems, the 2010 Ford Fusion is equipped with an electric power steering (EPS) system. This system utilizes an electric motor instead of a hydraulic pump to ...



How to Quickly Fix Power Steering Assist Fault in Ford Fusion 2012

If the issue persists, it is recommended to seek professional assistance for a thorough diagnosis and repair. The power steering system is crucial for smooth and effortless steering in your Ford Fusion 2012. However, if you encounter a power steering assist fault



Toyota Electric Power Steering Problems (Solved & Explained)

To fix a sluggish steering wheel, first, check the pressure in the tires. Low tire pressure would make it harder to steer tires. When you turn your steering wheel, you hear a ...

What Is Electric Power Steering?

How to Fix Electric Power Steering Although electric power steering can suddenly fail, more often it dies a slow death. It is possible to diagnose the problem before it is a total loss. The most obvious indicator that the power steering is malfunctioning is the



Electrical power steering repair

Electrical power steering (EPS) is a result of eliminating the power steering pump and has drastically changed the way we diagnose and repair steering systems. These systems first ...





Is the Service Power Steering Light On? 5 Causes + How to Fix

Power steering fluid change: \$90-\$130 Power steering belt replacement: \$70-\$250 Power steering angle sensor replacement: \$100-\$550 Hydraulic pump replacement: \$150-\$1000 Next, we'll address some general questions about the power steering system. 1.



Can You Drive Without Power Steering + How to Fix It?

How to Fix Power Steering Problems If you're unsure how to fix electric or hydraulic power steering system problems, it's best to ask a professional for help. Here's what a mechanic would do: Check the power steering fluid level and add or change it if it's low or

Hyundai Elantra Power Steering Problems: A Comprehensive Guide

The electric power steering (EPS) system in the Hyundai Elantra is designed to provide assistance to the driver by reducing the effort required to turn the steering wheel. However, when the EPS system malfunctions, it can result in a sudden loss of power steering assist, making it harder for drivers to maneuver their vehicles.



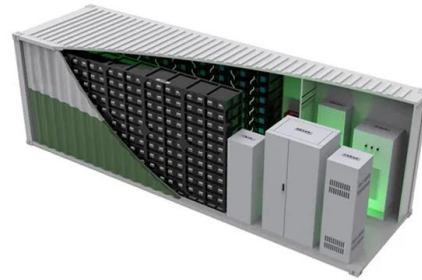
An Illustrated Guide to Eps Electric Power Steering Diagrams

Unlike hydraulic power steering systems, electric power steering does not rely on engine power to assist with steering. This reduces the load on the engine, resulting in improved fuel consumption. Enhanced driving comfort: EPS electric power steering provides a



Ultimate Guide: How to Fix Electric Power Steering ...

In this article, I'll guide you through practical solutions to tackle common problems that may arise with your electric power steering system. Whether you're facing steering stiffness, strange noises, or complete power ...



[How To Fix Power Steering Warning Light](#)

To prevent the power steering warning light from showing, first check the level of the power steering fluid, topping it up if necessary. Next, inspect the power steering pump and the steering rack for any signs of damage or leaks. As far as electric systems are

How Do I Reset My Electric Power Steering? And Does It Really ...

Electric power steering (EPS) is a technology that assists drivers in steering vehicles by providing additional torque to the steering wheel. This extra force is generated by an electric motor, rather than the hydraulics typically used in traditional power steering systems.



Diagnosing Electric Power Steering System Issues

Tips For Diagnosing EPS Issues. The main indication you'll get if there is a malfunction with the electric power steering system is that the EPS light will illuminate on the dashboard. ...



Contact Us

For catalog requests, pricing, or partnerships, please visit:
<https://www.vdbconstruction.co.za>