

How to use 24v lamps with photovoltaic panels





Overview

How do I connect a 12V solar panel to a 24V Solar System?

This can be done either by using 24V solar panels and connecting them in parallel (since this leaves voltage alone) or by connecting sets of two 12V solar panels in series (since this will double the voltage to 24V) and everything else in parallel.

How many solar panels are rated for 24V?

Most 24V solar systems have 3-8 panels rated for 24V. Panels are wired in series to create a total system voltage around 24V. More panels generate more wattage. [What Voltage Should A Solar Panel Be For A 24v System?](#)

Look for solar panels rated for 24V operation.

What is a 24V solar panel?

24V solar panels look similar to 12V panels but are bigger and contain twice as many solar cells, totaling 72 cells. They can still be installed in many places, despite their bigger sizes. They can produce much higher voltages that range between 1,500-2,000 watts.

What is the difference between 12V and 24V solar panels?

[12V Vs. 24V Solar Panel \(The Difference\) - Solar Panel Installation, Mounting, Settings, and Repair.](#) There are many choices when choosing solar panels; one is between 12-volt and 24-volt. So let's see what's best for your situation. 12V solar panels are ideal for smaller homes and buildings, while 24V panels are better for bigger installations.

Can a solar panel charge a 24 volt battery?

Since off-grid solar panels are usually setup for 12 volt charging system, if you have a 24 volt battery system, you will need to wire two panels in series, or get a single high voltage solar panel, in order to generate enough voltage to



charge a 24V battery.

What is a PV panel for a solar lighting system?

A PV panel for a solar lighting system differs from the traditional large solar panel, since it comprises four solar cells. PV panel consist of solar cells connected in series to produce a higher voltage. A single solar cell converts sunlight into electricity by generating current, which is called “photovoltaic effect”.



How to use 24v lamps with photovoltaic panels

[Beginners Guide to 12 Volt Solar Panels](#)



RVs and motorhomes typically already have 12 volt batteries for lighting, hot water heater controls, AC/heating controls, and refrigerators. Therefore, it makes sense to use the voltage that already works for that ...

[12V Vs. 24V Solar Panel \(The Difference\)](#)

Plenty of small photovoltaic solar cells that convert sunlight into electricity are linked together to form a solar panel. 12V panels contain 36 cells, while 24V ones have 72. ...



Convert Outdoor Light to Solar - 3 Easy Ways With ...

An "off the shelf" kit to convert outdoor light to solar power can save you time and fuss, but doing it yourself will save you money and ensure a system that stands the test of time. Let's jump straight in. 3 Ways to Convert ...



[12V Vs. 24V Solar Panel \(The Difference\)](#)

Plenty of small photovoltaic solar cells that convert sunlight into electricity are linked together to form a solar panel. 12V panels contain 36 cells, while 24V ones have 72. Those photovoltaic cells absorb tiny particles of light ...



How to wire solar panels , Essentra Components UK

Also, note: the National Electrical Code (NEC) prohibits using regular cables in your solar panel installation. You need solar panel cables and wires designed specifically for ...



24V/12V Photovoltaic Solar Panel Range. PV Solar Panels 5W ...

Need a rigid solar panel? Visit us for monocrystalline, polycrystalline, amorphous solar panels 5-210W with/without frames, for 12V/24V battery charging. Lighting; Small Solar Panels. 5V to ...



The Complete Guide to Solar Panel Wiring Diagrams

Detailed Guide to LiFePO4 Voltage Chart (3.2V, 12V, 24V, 48V) Buyer's Guides. How to Convert Watt Hours (Wh) To Milliampere Hours (Mah) For Batteries. Buyer's ...





How to Wire Solar Panel to 120-230V AC Load and Inverter?

How to Wire Solar Panel to AC Load (120/230V). Wiring PV Panel to an Inverter, Charge Controller, 12V Battery, 12VDC Load & AC Load via UPS. The whole system can light up ...



How to Choose Between a 12V and 24V Solar Panel?

Like the battery, solar panel should also be compatible with the rating of the inverter. For example, a 12V solar panel should be paired with a 12V inverter and a 24V solar ...



Solar Panel kWh Calculator: kWh Production Per Day, Month, Year

All the electric connections in a solar panel system incur a loss. We differentiate between inverter losses, DC cables losses, AC cable losses, temperature losses, and so on. The most efficient ...



Connecting Solar Panels Together for Increased Power

We can see that the solar panel rated at 9 volts, 5 amps, will only use one fifth or 20% of its maximum current potential reducing its efficiency and wasting money on the purchase of this solar panel. 3 x 24V series panels in parallel with 2 ...





DIY Solar Lights for Beginners (No Tools Needed!)

Stick the double-sided mounting tape to the back of your solar panel. I just put tape on my panel's four corners, but you can do the whole frame if you'd like. Note: If you're ...



12V 10AH



[How to Charge a Battery from Solar Panels](#)

Solar Panel Charging Considerations. There are a few tips when using a solar panel to charge a battery. The size of the solar panel is the most crucial factor. The solar panel must be big enough to charge the battery ...

Solar Charge Controller Sizing and How to Choose One

Solar charge controllers play an integral role in solar power systems, making them safe and effective. You can't simply connect your solar panels to a battery directly and expect it to work. ...



Off-Grid Solar Power Inverter Units, Convert Your 12V DC to 240V ...

12V & 24V solar power inverters to give you 230/240V AC. These units come with cut-off features to protect your battery and appliances from harm. Solar Panel Kits For Houses; Solar and ...



LED Light Strip to Solar Panel: A Step-by-Step ...

Harnessing Solar Power: How to Power Your LED Light Strip with Solar Panels In today's world, where energy efficiency and sustainability are becoming increasingly important, finding innovative ways to power our devices ...

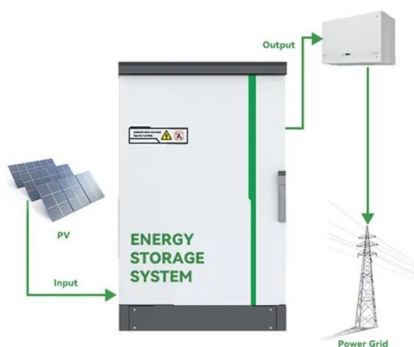
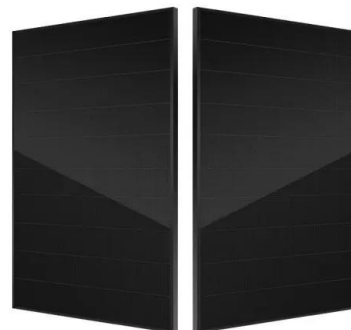


12V panels and batteries in a 24V system

A 12 volt panel has maximum power at around 17 volts so will need a minimum of 2 in series in a 24 volt system. There is no technical disadvantage but larger domestic sized ...

How to Choose a Correctly Sized MPPT Charge Controller

MPPT charge controllers can shift voltages in order to optimize the output of your solar panels. The voltage from your solar panels varies all of the time as the intensity of ...



Solar Simplified: Easy-to-Understand Guide to Voltage, Amperage ...

It represents the total power output of a solar panel. Understanding wattage is essential for determining how much energy a solar panel can produce and, consequently, how ...



How to Connect a Solar Panel to a Motor

24 Volt Batteries 48 Volt Batteries Battery Chargers Solar powers produce electrical energy by absorbing the light energy from the sun and using specialized solar cells ...



DETAILS AND PACKAGING



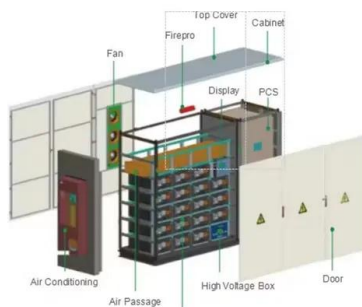
- 1 USER MANUAL PDF
- 2 RJ45 Cable For RS485/CAN
- 3 Battery in Parallel Cables
- 4 RJ45 TO USB Monitor Cable
- 5 M8 Terminal*4

Understanding Solar Panel Voltage for Better Output

Now, grab your solar panel and expose it to sunlight. Attach the multimeter's red probe to the positive terminal and the black probe to the negative terminal of the solar panel. ...

How to Convert 24V Solar Panel to 12V Battery

How to Convert a 24V Solar Panel to 12V Battery. The 24V to 12V converter or regulator is the key component that will limit or control the amount of energy that flows from the solar panel. You can do the conversion ...



The Ultimate Guide to Solar Lights and Solar ...

The battery voltage (also known as "system voltage") is typically 12V. 6V or 24V, however, are also possible. What also matters here is the distance between the artificial light and the solar panel. You should place the ...



Solar Panel Wiring Guide

You must also use a 30-36 cell (17 to 20Vmp) solar panel on a 12V battery or 60-72 cell (34 to 40Vmp) solar panel on a 24V battery. To size a PWM controller, a simple calculation is: Power of Array in Watts / Battery Bank Voltage x 0.8 for ...



How To Check Your Solar Panel & Regulator/Controller

The first two measurements use the solar panel on its own. When disconnecting the solar panel, regulator and battery, take care to disconnect the panel from the regulator first, and then ...

Solar Panel Series Vs Parallel: Wiring, Differences, And ...

ECO-WORTHY 200 Watts 12 Volt/24 Volt Solar Panel Kit with High Efficiency Monocrystalline Solar Panel and 30A PWM Charge Controller for RV, 2- If you have partial shading and variable lighting conditions: When ...



Contact Us

For catalog requests, pricing, or partnerships, please visit:
<https://www.vdbconstruction.co.za>