

How wide is the maximum width of a photovoltaic panel





Overview

As you can imagine, you can get almost any size solar panel you desire, from single tiles to ones that cover the entire roof. There are even companies that will craft custom and bespoke solar panels for your roof. However, if you have a particularly small roof there's no need to be too worried as you can still install solar.

The majority of solar panels for sale in the UK average around 350 watts (W) in power for residential units. However, it's quite easy to get your.

If you have a small home or want to power mobile vehicles like caravans and campervans, the good news is that there are many smaller-sized systems available. This includes small solar panels, as well as battery storage.

Below we have detailed some of the most common solar panel installations in the UK for domestic properties. Please note that both the costs and final.

The size of these panels can range from 1.6m tall x 1.0m wide, to 1.7m tall x 1.0m wide. What is the difference between solar panel size and dimensions?

Solar panel size indicates the amount of energy that is produced by your system, while solar panel dimensions indicate the physical size of the solar panel. The average 350W solar panel has the dimensions of 190cm x 100cm x 4cm. On average, domestic solar panels weigh somewhere between 18 and 21kg.

What are solar panel dimensions?

Solar panel dimensions indicate the length, width, and thickness of the panels, giving you a better indication of how much space they will take up on your roof. Currently, some of the most common solar panel sizes are 350W and 450W solar panels.

What size solar panel do I Need?

The most common solar panel sizes for residential installations are between 250W and 400W, while larger commercial installations may use panels up to 500W or more. The size of a solar panel affects its efficiency, with larger



panels generally being more efficient but also more expensive and heavier.

Is solar panel size the same as solar array size?

As such, solar panel size shouldn't be confused with solar array (or, if you prefer, solar system) size.

What are the dimensions of a residential solar panel in the UK?

The typical dimensions of a residential solar panel in the UK is 189cm x 100cm x 3.99cm (length, width and height) Solar panel weight is a crucial factor to consider when planning a rooftop solar installation. The weight of the panels, along with the mounting equipment, adds a significant load to your roof structure.

How important is solar panel size?

Solar panel size is a crucial factor to consider, as it is the element that ensures that your energy needs are met by your solar system. Solar panel sizes like 350W or 450W can generally easily tend to the electricity consumption requirements of small to large households.



How wide is the maximum width of a photovoltaic panel



How big are solar panels? Solar panel size and weight

We'll help you understand solar panel size, solar panel weight, and whether your roof can support your panels. Open navigation menu EnergySage Residential solar panels ...

Solar Panel Sizes and Wattage: Everything You Need ...

The dimensions of the panel - height x width measured in meters or centimeters. The maximum power output of the panel - measured in wattage, or 'W' The size of a solar panel directly impacts the number of solar ...



51.2V 300AH

Solar Panel Sizes And Wattage , Sizing, Dimensions & Weight

Watt (W) and kilowatt (kW): a unit used to quantify the rate of energy transfer. One kilowatt = 1000 watts. Solar panels' rating in watts specifies the maximum power ...



Comprehensive Guide to Solar Panel Sizes and Their Significance

Why Solar Panel Size Matters . When investing in solar panels, it's not just about how many panels you get; it's also about their size and capacity. The size of a solar ...



Ultimate Guide to Solar Panel Size and Weight

Everything you need to know about solar panel size and weight, including sample calculations that will help you maximize solar power at the lowest cost. This is well below the maximum acceptable load (20 ft. 2) for a ...



 LFP 12V 100Ah

Solar Panel Size & Weight Guide [+ Charts] - Solartap

Solar panel dimensions depend on how many cells are in each panel, as cell size is pretty uniform across all brands of residential solar panels. Each cell is usually 156 millimeters by 156 millimeters, or 6 inches long and 6 ...



Solar Photovoltaic Panel Sizes: A Complete Guide

Shorter lifespan - this solar panel size typically lasts for 10-20 years. Frequently Asked Questions. To understand solar panel size better, here's a list of FAQs about the best solar ...





Solar Panels Size & Weight (Including Commercial ...

Things like solar panel size, wattage, efficiencies, and the way the panels themselves are manufactured vary based on the end application. (78 inches long by 39 inches wide). As with residential solar panels, ...



Solar Panel Dimensions and Sizes: Complete Guide

The average size of a solar panel cell measures 6" by 6" square. How many solar panels do I need for my home? The average home requires around 20 solar panels to completely offset its ...



Guide to Solar Panel Sizes & Dimensions (November ...

Discover which solar panel sizes and dimensions are the most common in the UK, as well as which size is the best for your home. 0330 818 7480. Become a Partner. Menu. Solar Panels Heat Pumps. Boilers. Windows. ...

Lower cost larger system

Verified Supplier

20Kwh
30Kwh



Solar Panels Sizes and Weights (All Sizes)

The dimensions of these 60-cell solar panels are 66 inches long by 40 inches wide. The typical depth will range from 1.4 to 1.8 inches. In most cases, 60-cell solar panels ...



Solar Panel Dimensions & Weight in Australia: The ...

The variation in output will usually not change the size of a single solar panel. The standard size of a 250W solar panel is approximately 1.7m x 1.0m, with slight variations depending on the manufacturer. The ...

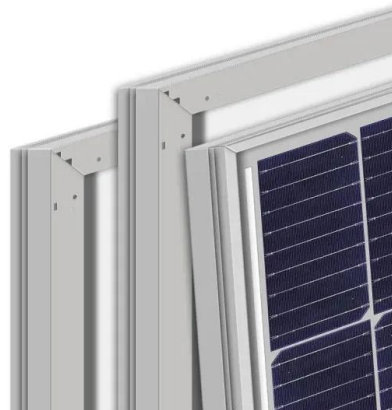


[Solar Panel Sizes & Dimensions UK \(2024\)](#)

Many solar panel companies make small solar panels designed specifically for small roofs. You can also opt for high-efficiency solar panels that have conversion rates as high as 23% (compared to the industry average of ...

Solar Panel Sizes & Dimensions (UK): Simply Explained

Solar panel dimensions & sizes (UK): Simply explained For residential UK homes, the average solar panel size is generally between 1.6 to 1.8 meters tall and around 1 meter wide. These ...



Performance enhancements and modelling of photovoltaic panel

Solar photovoltaic (PV) technologies are well-known around the world for being environmentally friendly and long-lasting, as well as having a wide range of applications in ...





Solar Panel Sizes, Dimensions & Wattages: UK Guide 2024

Solar panel size indicates the amount of energy that is produced by your system, while solar panel dimensions indicate the physical size of the solar panel. The ...



Ultimate Guide to Solar Panel Sizes, Dimensions & How Many Solar Panels

When it comes to standard solar panel sizes, like 300w or 500w, it is essential to determine the size of a solar panel system based on these standard sizes. The dimensions of ...

Solar Panel Size: Dimensions & Determining Factors

The PV cells each measure 6 inches long and 6 inches wide. The size of the solar panels may vary, but PV cells always have a measurement of 6 x 6 inches. Each PV ...



Solar panel sizes and wattages , The Independent

This guide explains the most common solar panel sizes and dimensions across the UK. a standard 350W residential solar panel is around 1.89m long, 1m wide and solar ...



Most efficient solar panels 2024 -- Clean Energy Reviews

The race to produce the most efficient solar panel heats up. Until mid-2024, SunPower, now known as Maxison, was still in the top spot with the new Maxison 7 ...



Solar Panel Wire Sizes: PV Cable (AWG) Calculation Guide for ...

In solar power systems, solar energy captured by a solar panel array is converted into usable power. The thickness of the copper wire in solar panel wires, which connect the solar cells, ...

What is the Size of a Solar Panel?

The average size of a solar panel is approximately 65 inches long and 39 inches wide. This solar panel size comes with around 60 photovoltaic (PV) cells, a depth of 1.5 to 2 ...



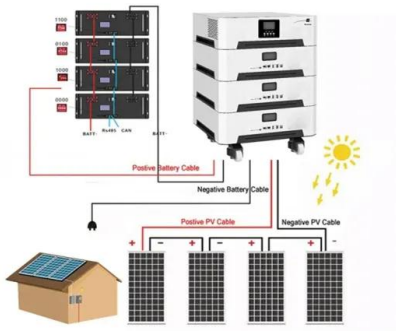
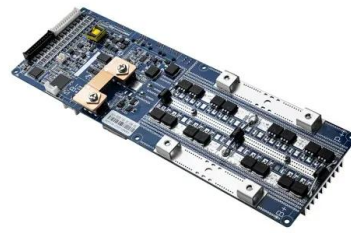
Solar Panel Size Guide: Which Size Of Solar Panel Is Best?

How does solar panel size relate to the amount of electricity it produces? Different solar panels generate different amounts of energy, and this capacity to produce ...



Photovoltaic Basics (Part 1): Know Your PV Panels for Maximum ...

Photovoltaic Basics (Part 1): Know Your PV Panels for Maximum Efficiency. August 26, 2024 to keep solar panel costs down, polycrystalline silicon is used, which is ...



Guide to Solar Panel Sizes & Dimensions (November ...

Solar cell dimensions are typically around 189 x 100 x 3.99cm (6.2 x 3.28 x 0.13 feet), while solar panel dimensions are usually between 1.6m² to 2m² (17.22 to 21.53 square feet). The physical size of the solar panel is ...

Solar Panel Sizes & Wattage

Panel Dimensions: These are typically measured in meters or centimeters, encompassing both height and width. Maximum Power Output: Solar Panel Size. Wattage. 2 kW. 2,800 kWh per ...

FLEXIBLE SETTING OF MULTIPLE WORKING MODES



Contact Us

For catalog requests, pricing, or partnerships, please visit:
<https://www.vdbconstruction.co.za>