

# **Huawei photovoltaic inverter red light flashes**





## Overview

---

If the alarm/maintenance indicator is red, an internal fault on the DC side of the inverter is generated. The inverter is in grid-tied mode. How do I know if my PV inverter is bad?

1. Use a multimeter to check whether PV modules are energized, whether the DC switch is turned on, and whether AC power is detected. 2. Check whether the inverter indicator turns red, rectify the fault based on the indicator, and check whether the inverter status is normal on the app. 3. If the fault persists, contact the installer.

Why is my PV inverter unable to power on?

PV inverters are unable to power on. What should I do if I forgot my WiFi password?

The WiFi communication fails at night. Can the USB-4G port be used as a USB data port?

The indicator is red. The inverter yield is low. 1. Check whether the DC and AC cable connection is normal. 2. Check whether fault alarms are generated on the app. 3.

What color is the Fusion Solar indicator?

The indicator is red. FusionSolar introduces users to the datasheet, user manual, quick guide, and installation video of a solar inverter to address their frequently asked questions. Huawei FusionSolar provides new generation string inverters with smart management technology to create a fully digitalized Smart PV Solution.

What does a PV connection indicator indicate?

The PV connection indicator and the grid connection indicator preferentially indicate environmental faults. Local maintenance refers to operations performed after a USB flash drive, a WLAN module, a Bluetooth module, or a



USB data cable is inserted into the USB port on the inverter.

How do I Reset my sun2000 inverter?

Step 1 Ensure that the SUN2000 connects to the AC and DC power supplies at the same time. Indicators and are steady green or blink at long intervals for more than 3 minutes. Step 3 Reset the password within 10 minutes. (If no operation is performed within 10 minutes, all inverter parameters remain unchanged.) >.

What to do if PV inverter terminals are lost?

If terminals are lost, contact your agent or Huawei service center for replacements. PV inverters are unable to power on. 1. Use a multimeter to check whether PV modules are energized, whether the DC switch is turned on, and whether AC power is detected. 2.



## Huawei photovoltaic inverter red light flashes

---



### Construction of the Red Sea Project in Saudi Arabia

Huawei provided a complete set of equipment and consulting services for the project, including 400 MW PV inverters, 1.3 GWh ESSs, and transformer stations. Through the application of a ...

### Troubleshooting

Alarms range in severity according to the following definitions: Major: The inverter enters the shutdown mode and disconnects from the power grid to stop generating electricity after a fault ...



### [Fault finding on Solar PV Panel systems](#)

If there is enough light outside for the panels to generate and the inverter screen is not showing anything then there's a good chance there's no grid supply to the inverter. If the TGM's Red ...

### HUAWEI SUN2000 SERIES USER MANUAL Pdf Download

Page 1 SUN2000-(20KTL, 29.9KTL, 30KTL, 36KTL, 40KTL)- User Manual Issue Date 2020-10-15 HUAWEI TECHNOLOGIES CO., LTD.; Page 2 Notice The purchased products, services and ...



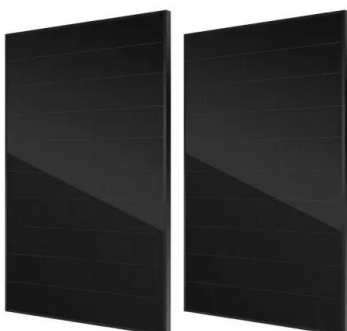
### [Smart Energy Controller User Guide\\_Inverter](#)

Locating Insulation Resistance Faults. Step 1 Ensure that the SUN2000 connects to the AC and DC power supplies at the same time. Indicators and are steady green or blink at long intervals for more than 3 minutes. Step 3 ...



### [WVC300-R3 Micro Inverter Instruction Manual](#)

Photovoltaic module sales@inverter Globe Shipping +1 800-585-1519. 2 1 3 +- LED indicator function of micro inverter 1.Red light is on---The micro-inverter is ...



### **074 Troubleshooting Guide**

power which can be verified by the flashing green light on the inverter. The 074 fault can be resolved through a firmware upgrade. This upgrade can be done locally by the end-user or the ...



Installation Operation Manual

red: fault green: normal operation Flashing red light: warning Flashing green light: Update program 3.2 Dimensions Size and weight: Model Height (H) Width (W) Depth (D) Weight MID ...

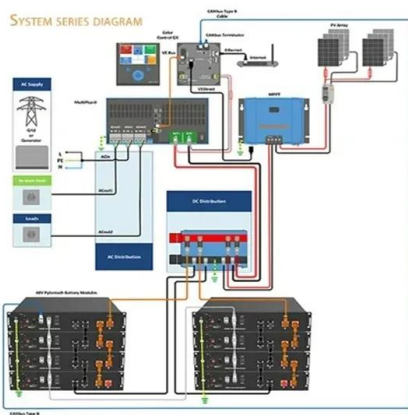


**Solar Charge Controller Blinking & Flashing Meanings ...**

If the light is off, it means there is no load connected or no power input. Load light flashing red means the load is overloaded, will stop running and enter a protection state. Load light flashing yellow means the load ...

**Hybrid Huawei Inverters in PVshop , Photovoltaic, Panels, Inverters ...**

Huawei FusionSolar hybrid inverters for residential solutions. Buy by direct distributor in Europe This site uses cookies to deliver services in accordance with the Cookie Files Policy .



Explanation of the LED Signals of Inverters

The green LED flashes quickly: Update of central processing unit The central processing unit of the inverter is being updated. The green LED is glowing: Feed-in operation The inverter feeds ...



## Huawei SDongle Support Guide, Manuals & PDF - Huawei

Instantly find the answers to all your questions about Huawei products and solutions. Ask Now. Contact Huawei Sales. Looking to make a purchase? Leave your details and we'll be in touch. ...



## New pure sine wave inverter causing led light

HF sine wave inverter architecture may be forcing current to achieve a voltage (into a load), has regulation issues. HF modified square wave inverter runs a PWM ratio to ...



## 2 LEDS lights flashing on SUN2000L-5KTL inverter

Huawei support community is a communication center for sharing experiences and Hi,One of our customer got a problem on his inverter.He mentioned the LED light was ...



## Why is the status blinking red after turning the system on for the

I think I need some trouble-shooting steps. I'm turning my system on for the first time and the microinverters are still showing a red blinking status light, which means the AC grid is not ...



### [Mate 20 Pro won't switch back on](#)

Hello. My Huawei Mate 20 Pro appears to have suffered a system crash and turned itself off. Now it won't switch back on, and I can't charge it either. I've tried all combinations of the Power and ...



### ESS



### [SUN2000-\(50KTL, 60KTL, 65KTL\)-M0 User Manual](#)

Blinking red at long intervals (on for 1s and then off for 4s) The SUN2000 is generating a warning alarm. Blinking red at short intervals (on for 0.5s and then off for 0.5s) The SUN2000 is ...

### **IQ7A Flashing red**

If you are seeing transient flashing red, this indicates your microinverters are sensing AC voltage or frequency outside their operational range. While the grid may be unstable in your locale, ...



### **Red LED is flashing on Sunny Boy SB-TLMS or SB-TLHC**

The red LED flashes on the SB 4200/5000TLMS or SB 4200/5000TL HC inverter. The green and yellow LEDs are not relevant in this case. Cause All work on the inverter and ...





## Inverter displaying an error code, LED flashing - ...

PV system operators and installers receive fast support when they need it via our new SMA Online Service Center. You can use this to contact our Service team, look at the status of your service cases and access ...



### [SDongleB-06 Smart Dongle Quick Guide \(4G\)](#)

Blinking red and green alternately  
Blinking slowly (red for 1s and green for 1s)  
No communication with the inverter  
o Remove and then insert the Dongle.  
o Check whether the inverter matches ...



## Il principale fornitore italiano di soluzioni

FusionSolar è un fornitore leader di soluzioni solari a livello mondiale, che collabora con installatori professionisti, società di servizi pubblici e altri stakeholder per promuovere l'uso ...



### [How to Reset an Inverter? \[Step-by-Step Guide\]](#)

For the Power inverter check the green lights on the front of the inverter: Two solid green lights mean the inverter is on and is working. Blinking green light means input voltages are lower ...





## Smart PV Controller User Guide\_solar Inverter Support ...

PV inverters are unable to power on. 1. Use a multimeter to check whether PV modules are energized, whether the DC switch is turned on, and whether AC power is detected. 2. Check whether the inverter indicator turns red, rectify the ...



## Contact Us

---

For catalog requests, pricing, or partnerships, please visit:  
<https://www.vdbconstruction.co.za>