

# IBM ds8870 storage energy efficiency





## IBM ds8870 storage energy efficiency

---



### IBM System Storage DS8870 (Machine type 2423) Models 961 ...

IBM System Storage DS8870 (Machine type 2423) Models 961 and 96E with three-year warranty Table of contents efficiency and are designed to support emerging energy efficiency standards. Business class configuration options The DS8870 provides a The

### IBM Easy Tier

IBM DS8000 Storage Tier Advisor Tool adds performance reporting capability to your storage system. Easy Tier reporting improvements The reporting mechanism of Easy Tier and the Storage Tier Advisor Tool that uses Easy Tier includes updates to a workload categorization, workload skew curve, and the data-movement daily report.



### IBM System Storage DS8870 Architecture and Implementation

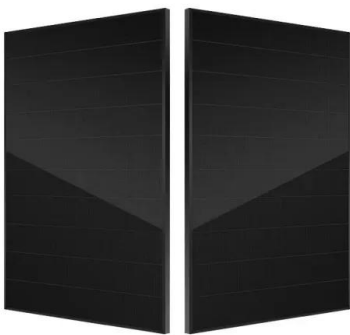
RAS on IBM System Storage DS8870. This chapter describes the reliability, availability, and serviceability (RAS) characteristics of the IBM System Storage DS8000 family of products. ...

### DS8870 overview

The following describes the features and functions of the DS8870. High-density storage enclosure The DS8000 series previously introduced the storage enclosure that supports 24 small form factor (SFF) 2.5" SAS drives in a 2U



(height) factor. The DS8870 also supports a high-density and lower-cost-per-capacity large form factor (LFF) storage enclosure.



### IBM System Storage

IBM System Storage - DS8870 Disk Storage Microcode Bundle 87.31.37.0 Release Note Information v1.2 DDM replacement failure 1. Problem Description: Map 4970 enhancement for SRC BE340027 where DDM is bypassed by FCIC firmware. 2. Potential none

### Space-efficient storage commands

Space-efficient storage commands create, modify, delete, and display extent space-efficient (ESE) and track space-efficient (TSE) repositories. These two types of repositories differ in many ways, but the main idea of a repository is identical. A repository of type T



### Making Smart Storage Decisions for DB2 in a Flash and SSD World

In 2009, IBM and other storage vendors introduced SSDs for enterprise storage subsystems, such as IBM DS8000®. These SSDs were essentially a more reliable form of drives that were being used in consumer grade personal computers. No real changes



IBM Announces DS8880 storage system models

This week, IBM announced its latest storage arrays in its IBM System Storage DS8000 series: the DS8880 models. Similar to the "Business Class" vs. "Enterprise Class" distinctions of the DS8870, IBM announced two new models, the DS8884 and the DS8886.

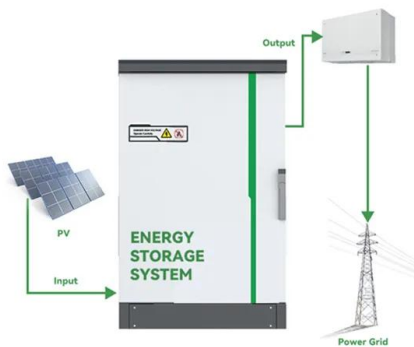


**DS8870(961 ? 96E ?)??**

IBM DS8870 ??????????????????,????????????????????  
?? IBM DS8000 ?????????????????? ??????????(961  
?)?(?)?? 3 ?????(96E ?)????????????(?????????)???

**IBM System Storage DS8000**

Remote Support Overview 2 1.0 Overview IBM® highly encourages you to take advantage of IBM Call Home and all its related features to allow you and IBM to partner for your success. Call Home is a support function embedded in all storage products. By enabling



**Technical overview**

IBM DS8870 is a high-performance, high-capacity storage system that supports continuous operation, data security, and data resiliency. It is the latest and most advanced storage system in the IBM DS8000 series. The storage system consists of a base frame



## Accelerate with IBM Storage: Exploiting DS8000 with IBM i

Washington Systems Center - Storage ©  
Copyright IBM Corporation 2017 Accelerate with  
IBM Storage.7.5 2004 oDS8100/DS830 0 4-2010  
oEasy Tier oThin Provisioning



## Using the IBM DS8870 in an OpenStack Cloud Environment

The IBM® DS8870 comes with characteristics and functions that make it an ideal storage foundation for building a workload-aware cloud, especially with the availability of the IBM Storage Driver for OpenStack.

## DS8870 (Models 961 and 96E)

The DC-UPS units improve energy efficiency. The DS8870 power system also contains a faster processor with parity-protected memory. The DS8870 system meets restriction of hazardous substances (RoHS) requirements. It conforms to the following EC directives:



## IBM DS8870 with Firmware Release 7.5 Product Guide

The IBM DS8870 is designed to manage a broad scope of storage workloads that exist in today's complex data infrastructure, and do it effectively and efficiently. This IBM Redbooks® Product ...



[DS8870 \(Models 961 and 96E\) overview](#)

IBM DS8870 is a high-performance, high-capacity storage system that supports continuous operation, data security, and data resiliency. It is the latest and most advanced storage system in the IBM DS8000 series. The storage system consists of a base frame



[Chapter 1. Introduction to the IBM DS8870](#)

Introduction to the IBM DS8870 This chapter introduces the features and functions of the IBM DS8870. More information about functions and features is provided in subsequent chapters. ...



LFP 12V 200Ah

**DS8870 (Models 961 and 96E)**

DS8870 overview The DS8870 is the newest addition to the IBM® System Storage® DS8000 series. The DS8870 adds Model 961 (base frame) and 96E (expansion unit) to the 242x machine type family. DS8870 storage enclosure overview The DS8870 includes two types of high-density storage enclosure, the 2.5" small form factor (SFF) enclosure and the new 3.5" large form ...



**What's new**

New command (DS8000 only) that creates space-efficient storage in an existing extent pool. See mksestg. chsestg - New New command (DS8000 only) that changes the space-efficient storage attributes for an extent pool. See chsestg. rmsestg - New rmsestg.



[DS8870 storage enclosure overview](#)

The DS8870 supports a high-density and large form factor (LFF) storage enclosure. This enclosure accepts 3.5" drives, offering 12 drive slots. The SFF enclosure offers 24, 2.5" drive slots. The LFF enclosure has a different appearance from the front than does the SFF



**12.8V 100Ah**



**Hardware overview**

An expansion frame (model 96E) is supported for DS8870 Enterprise Class and Business Class configurations with a minimum of 128 GB system memory. The DS8870 All-Flash configuration does not support an expansion frame. System types DS8870

**Features overview**

POWER7 processor technology provides high performance, and is supported on the DS8870, the newest addition to the IBM® System Storage® DS series (242x machine type family). The DS8870 offers up to three times higher performance than previous models in the DS8000® series for the highest performance requirements.



[DS8870 functional overview](#)

With storage pool striping support, the system automatically performs close to highest efficiency, which requires little or no administration. The effectiveness of performance management tools is also enhanced because imbalances tend to occur as isolated problems.





Space-efficient storage commands

The following space-efficient storage commands are available: chsestg Modifies the space-efficient attributes in an extent pool. Issestg Generates a report that displays the space-efficient storage values for the entire storage image. mksestg Creates space-efficient



**IBM System Storage DS8870 for Enterprise Systems**

IBM System Storage DS8870 for Enterprise Systems. Next generation model delivers up to 3x performance increase over DS8800! DS8870 model with upgraded IBM POWER7 controllers ...

**IBM System Storage DS8870 (machine type 2421, 2422, 2423, ...**

IBM System Storage DS8870 systems (machine types 2421, 2422, 2423, and 2424) are now available with new fifth-generation Easy Tier enhancements that enable more flash optimization choices with the DS8870, and include advanced features for



**Using the IBM DS8870 in an OpenStack Cloud Environment**

Using the IBM DS8870 in an OpenStack Cloud Environment 6 In addition to traditional enterprise-class storage technology, many organizations now have various storage needs with varying performance and price requirements. OpenStack has support for both Object



## [IBM Announcements May 2014](#)

Today is all about the [enhancements to the IBM System Storage DS8870], one of IBM's Enterprise-class high-end disk systems. High Performance Flash Enclosure When IBM designed the DS8870, it changed the bulk power supplies and batteries used in the previous DS8800 model to highly energy-efficient [ DC-UPS ].



## [DS8870 functional overview](#)

With storage pool striping support, the system automatically performs close to highest efficiency, which requires little or no administration. The effectiveness of performance management tools ...

## **IBM DS8870 with Firmware Release 7.5 Product Guide**

Built on over 50 years of Enterprise storage expertise, the IBM® DS8000® series is the flagship storage system within the IBM System Storage® portfolio. The IBM DS8870 represents the most recent in this series of high-performance,



## [IBM DS8870 and VMware Synergy](#)

This IBM® Redpaper publication describes the support of the IBM System Storage® DS8870 for VMware vSphere in general terms. It also describes in greater detail the VMware vSphere Storage APIs Array Integration (VAAI) primitives, the IBM Storage Management Console for VMware plug-in, and the IBM Site Replication Adapter (SRA) for VMWare Site ...



## Contact Us

---

For catalog requests, pricing, or partnerships, please visit:  
<https://www.vdbconstruction.co.za>