

lbm power systems 7





Overview

POWER7 is a family of processors based on the POWER7 released in 2010 that succeeded the POWER6 and POWER6+. POWER7 was developed by IBM at several sites including IBM's Austin, TX; Armonk, NY; and IBM Deutschland Research & Development.

IBM had two distinct POWER- and PowerPC-based hardware lines since the early 1990s:

- Servers running processors based on the POWER architecture in the RS/6000 family (later known as iSeries, then System i) running OS/400 (later known as i5/OS, and now z/OS)

What is IBM POWER systems?

IBM Power Systems is a family of server computers from IBM that are based on its Power processors. It was created in 2008 as a merger of the System p and System i product lines. IBM had two distinct POWER- and PowerPC-based hardware lines since the early 1990s:

How does IBM POWER7 work?

IBM POWER7 and POWER7+ processor-based systems automatically power off hot pluggable PCI adapter slots that are empty or not being used. System firmware automatically scans all pluggable PCI slots at regular intervals, looking for those that meet the criteria for being not in use and powering them off.

What is IBM POWER7+ processor?

IBM introduced the POWER7+ processor at the Hot Chips 24 conference in August 2012. It is an updated version with higher speeds, more cache and integrated accelerators. It is manufactured on a 32 nm fabrication process.

Is IBM a power PC?

It was created in 2008 as a merger of the System p and System i product lines. IBM had two distinct POWER- and PowerPC-based hardware lines since the early 1990s: Servers and workstations using POWER and PowerPC processors in the RS/6000 family (later known as pSeries, then System p), running IBM AIX and Linux on Power.



What is IBM POWER7 TM?

The IBM POWER7+™ processor available at frequencies of 3.6 GHz, 4.2 GHz, and 4.3 GHz. The larger IBM POWER7+ Level 3 cache provides greater bandwidth, capacity, and reliability. The 4-port 10/100/1000 Base-TX Ethernet PCI Express adapter included in the base configuration and installed in a PCIe Gen2 x4 slot.

What is the difference between IBM Power 6 & 7?

It achieved a remarkable 5 GHz. While the POWER6 features a dual-core processor, each capable of two-way simultaneous multithreading (SMT), the IBM POWER 7 processor has up to eight cores, and four threads per core, for a total capacity of 32 simultaneous threads.



IBM power systems 7



Power Systems: Managing the control panel functions

the power to the system unit(s), or disconnect the customer's DC power source, when directed to disconnect power during servicing. o Connect all devices installed in a rack cabinet to power devices installed in the same rack cabinet. Do not plug a power cord

Linux distributions and virtualization options for POWER8

Table 2. Linux distributions for POWER8 processor-based servers IBM POWER8 processor-based servers PowerVM LPARs 1 KVM Non-virtualized OS (Baremetal) 8335-GTB (IBM Power System S822LC) N/A N/A Little Endian: Red Hat Enterprise Linux 8.0, ...



Power7: IBM's next-generation server processor

The Power7 is IBM's first eight-core processor, with each core capable of four-way simultaneous-multithreading operation. Its key architectural features include an advanced memory hierarchy ...

[IBM Power: Systems Energy Estimator](#)

The IBM® Systems energy estimator is a web-based tool for estimating power requirements for IBM systems. This tool to estimates typical power requirements (watts) for a specific system configuration under normal operating conditions



[IBM Power for Google Cloud](#)

Introducing Converge IBM Power for Google Cloud (IP4G) - a state-of-the-art Infrastructure as a Service (IaaS) solution tailored to meet the specific needs of IBM Power Systems. Embrace the power of modern IBM Power Infrastructure ...



System to IBM i mapping

This page contains a table of the IBM i Operating System levels that will run on most IBM Power Systems processors. 1 V5R4M5 of the Licensed Internal Code is required on the indicated models. Other models which support the release can also use V5R4M5 LIC



Installing Red Hat Enterprise Linux on IBM Power System ...

For a list of supported distributions, see Supported Linux distributions for POWER8 and POWER9 Linux on Power Systems. Complete these steps: If your system belongs in a rack, install your system into that rack. For instructions, see IBM Power Systems.



System overview for POWER7® processor-based systems

System overview for POWER7® processor-based systems. This general overview information includes license agreements, warranty, safety notices, and server ...



[9040-MR9 \(IBM Power System E950\)](#)

The IBM Power System E950 (9040-MR9) is based on POWER9 processor-based technology. Use this information to find the system overview and the planning, installing, removing, replacing, configuring, and troubleshooting procedures.



IBM Power Systems Performance Capabilities Reference IBM i ...

IBM Power Systems Performance Capabilities Reference IBM i operating system 7.1 August 2013 This document is intended for use by qualified performance related programmers or analysts from IBM, IBM Business Partners and IBM customers using the IBM



IBM Places Power Systems at the heart of its hybrid cloud strategy

IBM is placing IBM Power Systems at the center of their strategy for hybrid cloud, including AI and app modernization. New IBM study: How business leaders can harness the power of gen AI to drive sustainable IT transformation 3 min read - As organizations strive to balance productivity, innovation and environmental responsibility, the need for sustainable IT ...





IBM Power 7?????????

??,IBM?????????"Power,???,???"2013 IBM Power Systems?????????IBM New Power????????? ?????? Power 7+?? ...

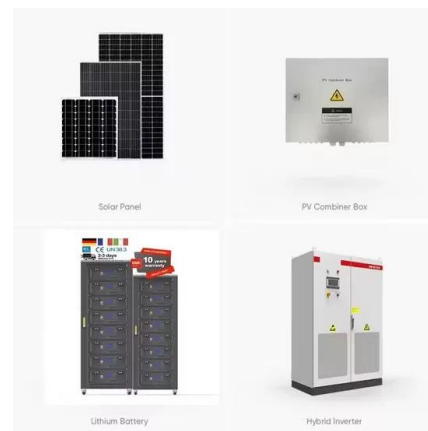


IBM Power Systems announces new hybrid cloud capabilities

For clients who cannot upgrade currently or need more time to upgrade to IBM i 7.3, we are now supporting IBM i 7.1 on Power Systems Virtual Server co-located with IBM Cloud ®. >> Read more: AIX: 35 Years of Innovation Build new application services

Looking Up IBM Power Systems Parts and Locations

NOTE: The below navigation is an example flow only to help determine the number of specific parts or part locations in the system. This should be used as a guide for any and all part or location information. 1. Clicking here leads to the Power8 documentation regarding all Power8 machine-type models available.



IBM Power Systems Virtual Server

IBM Power Systems Virtual Server on IBM Cloud(???PVS)??AIX?IBM i ?Linux?????????????????????IaaS????????? ?????? ??????????????????IBM?????IaaS?????????????????DC????? ?????????????????????????????????



Gamme Power Systems , Power Systems et IBM i

Gamme de serveurs Power Systems actuellement commercialisée par IBM. Cette gamme est désormais exclusivement composée de modèles Power10 (Scale-Out et Scale-Up Systems). Les derniers modèles POWER9 (Scale-Out Systems) qui étaient encore proposés, ont été retirés de commercialisation en octobre 2023.



Installing and configuring POWER7 processor-based systems and

Use this information to install and configure POWER7 processor-based systems and to install certain hardware features. These instructions will help you install, cable, and set up your IBM® Power 750 Express (8408-E8D) server. Cabling your server Learn how

Power7

IBM Power 7??????IBM?45nm
SOI??????,???Power 7????????,??4??6??8????,
??? ?????12?,????567mm2,????????Power7?????
,????,????? ...



IBM POWER9 on IBM Cloud: More Choice and Flexibility, On ...

IBM Cloud manages the setup and OS deployment. Like any other IBM Cloud IaaS component, clients will now be able to provision their Power systems with easy consumption and "as-a-service" billing experiences. IBM Power Systems Virtual Server on IBM





[IBM Power Private Cloud Edition , IBM](#)

IBM Power Expert Care (402 KB) Upgrade warranty and maintenance for IBM Power Maintain the highest level of availability with best in-class IT support to keep your mission-critical systems running smoothly. Buy or upgrade now IDC MarketScape



IBM i 7.5 documentation

Welcome to the IBM i 7.5 documentation, where you can find information about how to install, maintain, and use the IBM i IBM i overview and what's new Basic system operations Memo to users Frequently asked questions PDF files and manuals Db2 Mirror

IBM Power 710 and 730 Technical Overview and Introduction

This edition applies to the IBM Power 710 (8231-E1D) and Power 730 (8231-E2D), IBM PowerLinux 7R1 (8246-L1D and 8246-L1T), and PowerLinux 7R2 (8246-L2D and 826-L2T) ...

CE UN38.3 MSDS



IBM i operating system

IBM i is a fully integrated operating system, meaning the database, middleware, security, runtime, and hypervisor are all integrated into the stack and licensed as one. This integration helps clients lower TCO, simplify systems management, and do more with fewer resources.



Q& A: Stephen Leonard on the Business Value of IBM POWER10

Q& A: Stephen Leonard on the Business Value of IBM POWER10 IBM Cognitive Systems General Manager Stephen Leonard spoke with us about how IBM POWER10, the tenth generation of the IBM POWER processor family, is expected to deliver business value to large and small enterprises in the age of AI and Hybrid Cloud when IBM POWER10-based servers reach ...



PDF files for the IBM Power System S922 (9009-22A)

This topic contains links to PDFs of the IBM Power System S922 (9009-22A) documentation. EMX0 PCIe Gen3 I/O expansion drawer removal and replacement procedures Chassis management controller card for the EMX0 PCIe Gen3 I/O expansion drawer (approximately 4.5 MB)



?? POWER7® ????????????

?? POWER7® ????????????.
????????????????????,??.
?????????? ????????????????????. ? ...



- 50KW/100KWH
- HIGHER POWER OUTPUT IN OFF-GRID MODE
- CONVENIENT OPERATION & MAINTENANCE
- PRE-WIRED

Power servers , IBM

IBM® Power® is a family of servers that are based on IBM Power processors and are capable of running IBM AIX®, IBM i and Linux®. Respond faster to business demands, protect your data ...



9109-RMD (IBM Power 760)

The IBM Power 760 (9109-RMD) system is based on POWER7 processor-based technology. Use this information to find the system overview and the planning, installing, removing, replacing, configuring, and troubleshooting procedures.



POWER7

OverviewHistoryDesignSpecificationsPOWER7+See alsoExternal links

POWER7 is a family of superscalar multi-core microprocessors based on the Power ISA 2.06 instruction set architecture released in 2010 that succeeded the POWER6 and POWER6+. POWER7 was developed by IBM at several sites including IBM's Rochester, MN; Austin, TX; Essex Junction, VT; T. J. Watson Research Center, NY; Bromont, QC and IBM Deutschland Research & Develop...

Contact Us

For catalog requests, pricing, or partnerships, please visit:
<https://www.vdbconstruction.co.za>