

Inside a single photovoltaic panel



 TAX FREE

1-3MWh
BESS





Inside a single photovoltaic panel

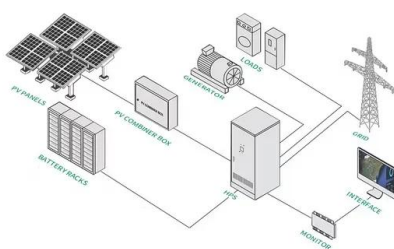


An Inside Look at Solar Panel Construction: Techniques and ...

As solar panel design improves, with a focus on better photovoltaic cell efficiency, solar energy's future looks brighter, cheaper, and more efficient. Fenice Energy is ...

Solar inverter

Internal view of a solar inverter. Note the many large capacitors (blue cylinders), used to buffer the double line frequency ripple arising due to single-phase ac system.. A solar inverter or photovoltaic (PV) inverter is a type of power ...

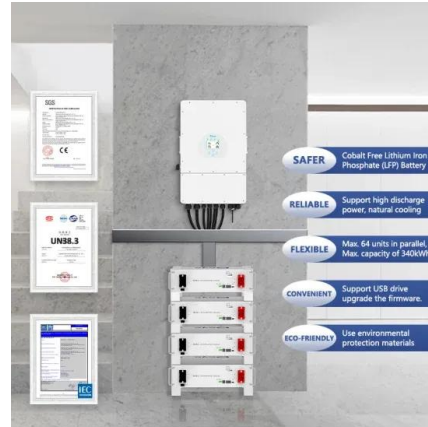


Analysis of mechanical stress and structural ...

In this study, single solar panel array has been subjected to a wind speed which is varying from 10 to 260 km/h, to look after the pressure effect inside the array. 3D Reynolds- averaged Navier

How do Solar Panels Work? - Working of Photovoltaic (PV) Systems

The solar panel system is a photovoltaic system that uses solar energy to produce electricity. A typical solar panel system consists of four main components: solar ...



FLEXIBLE SETTING OF MULTIPLE WORKING MODES



How Are Solar Cells Connected In A Solar Panel?

Solar panels in a single photovoltaic array are connected in the same way that PV cells are connected in a single panel. The panels in an array can be linked in series, parallel, or a ...

How to Install Solar Panels (Detailed Step-By-Step Guide)

The end brackets will have a spot to hold a single panel, and the middle brackets will have a spot to secure two panels. Some solar panel kits may use single panel ...



Take a look inside a lithium-ion battery, solar panel

Structurally, a silicon photovoltaic panel is like a sandwich: The solar panel's glass cover, frame and polymer backing are like the bread around a more exotic electronic filling of solar cells. The solar cells are made of ...





Introduction to Photovoltaic Solar Energy , SpringerLink

The simplest is the single-diode model form of a solar photovoltaic cell where a source of current produced by light is linked in parallel with a The process of changing load ...



[What is Solar Module? Types of Solar Modules](#)

A single photovoltaic Module/Panel is an assembly of connected solar cells that will absorb sunlight as a source of energy to develop electricity. A group of PV modules (also called PV ...

How Are Solar Panels Installed? , Step-by-Step Guide 2024

It's worth bearing in mind that smaller solar panel systems connect a single series of wires to the inverter, while larger systems connect several parallel wires. An inverter ...



The Complete Guide to Solar Panel Wiring Diagrams

Different Configurations for Solar Panel Wiring Diagrams. Traditional residential solar panel systems use a string inverter: multiple PV modules are connected to one another ...



One-Line Diagram Symbols (With Table) , Solar Plan ...

1. Solar Panel (PV Module) The symbol for a solar panel is a square split into two parts: a smaller rectangle inside the larger one, representing the conversion of sunlight into electricity. 2. PV Array. A PV array, which is a group of solar ...



[Solar Panel Components \(List and Functions\)](#)

The electrical components of a solar panel include the junction box and the interconnector. You can affix the junction box to the back of the board onto the back sheet. This box holds the beginning of wires to connect solar ...

What Are the Basics Behind Photovoltaic Solar Panels?

Monocrystalline PV panels are by far the most established option on the market. Sleek and streamlined, the solar cells inside a monocrystalline PV panel consist of a single ...



Solar Panel Wiring Diagram for All Setups [+ PDFs] - Solartap

A solar panel wiring diagram (also known as a solar panel schematic) is a technical sketch detailing what equipment you need for a solar system as well as how ...



Solar Panel Components: Exploring the Basics of PV Systems

Numerous solar cells are combined to create a single solar panel. These solar cells are interconnected through processes such as soldering, encapsulation, mounting onto a ...



Shading effect on the performance of a photovoltaic panel

The degradation of the incident solar irradiation on a single cell of the photovoltaic panel leads to a considerable decrease in the power produced by the system ...

Guide to Solar Panel Sizes & Dimensions (November 2024)

Discover which solar panel sizes and dimensions are the most common in the UK, as well as which size is the best for your home. 0330 818 7480. Become a Partner. Menu. ...



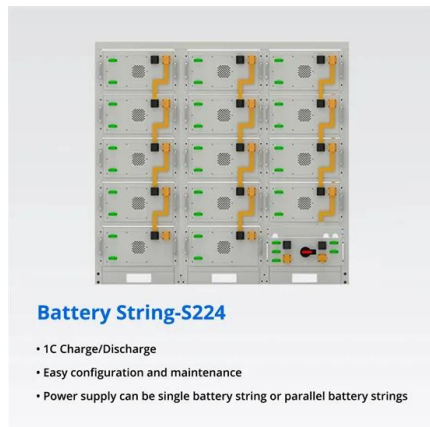
A Comprehensive Guide to Combiner Boxes in Photovoltaic ...

In a photovoltaic system, a combiner box acts as a central hub that consolidates and manages the direct current (DC) output of multiple solar panels. the solar panels are arranged in a single ...



What are solar panels made of and how are they made?

In addition to the solar cells, a standard solar panel includes a glass casing at the front to add durability and protection for the silicon photovoltaic (PV) cells. Under the glass exterior, the panel has a casing for ...



Battery String-S224

- 1C Charge/Discharge
- Easy configuration and maintenance
- Power supply can be single battery string or parallel battery strings

How do solar cells work? Photovoltaic cells explained

A typical residential solar panel with 60 cells combined might produce anywhere from 220 to over 400 watts of power. Depending on factors like temperature, Once ...

Solar Photovoltaic Cell Basics

Solar Photovoltaic Cell Basics. When light shines on a photovoltaic (PV) cell - also called a solar cell - that light may be reflected, absorbed, or pass right through the cell. The PV cell is composed of semiconductor material; the ...



Photovoltaic Basics (Part 1): Know Your PV Panels for ...

Monocrystalline silicon has to be ultrapure and has high costs because its manufacturing process is very complex and requires temperatures as high as 1,500°C to melt the silicon and regrow it pure; therefore, to keep solar ...



Solar Panel Wiring Basics: Complete Guide & Tips to Wire a PV ...

All solar panel strings connected in parallel have to feature the same voltage, and they also have to comply with the NEC 690.7, NEC 690.8(A)(1), and NEC 690.8(A)(2). ...



[Bypass Diode for Solar Panel Protection](#)

As the three PV cells are connected in series, the generated output current (I) will be the same (assuming the cells are evenly matched). The total output voltage, V_T will be the sum of all ...



Solar Panel Diagrams - How Does Solar Power Work?

There is an anti-reflective coating on the front of a solar panel that protects the cell inside while allowing through as much light as possible. Glass is an excellent material for ...



A Guide to Solar Inverters: How They Work & How to ...

The first part is the power optimizer, which handles DC to DC and optimizes or conditions the solar panel's power. There is one power optimizer per solar panel, and they keep the flow of energy equal. For example, with a standard string ...



Contact Us

For catalog requests, pricing, or partnerships, please visit:
<https://www.vdbconstruction.co.za>