

Installation of wind blades





Overview

How many blades does a wind turbine have?

They can have one to five blades. Wind turbine blades are connected to the nacelle. These blades are what move to cause gears to shift and generate electricity. Once a wind turbine is installed, it is required that testing takes place. This will ensure that the wind turbine is functioning properly.

Can a single-blade wind turbine be installed in higher wind speeds?

For installation of offshore wind turbine components, significant interests have been shown in the single-blade installation method. To facilitate the installation in higher wind speeds and with less human intervention, a trend has been observed of utilising specialised lifting, mating and damping devices.

How do you install a wind turbine?

Although in general each wind turbine model has only one installation procedure, several technical alternatives have been developed through the years. The quicker and easier method is probably to assemble the rotor on the ground. The three blades are connected to the hub and then lifted.

How do wind turbine blades work?

The blades are lifted one by one and connected to the hub, usually horizontally although some turbine models are designed for an inclined or even vertical blade position. Liftra, a company active in the wind industry, developed a tool called “blade dragon” that allow blade installation in every position.

How to build a wind turbine?

Foundation Construction: Depending on the turbine size and type, construct a suitable foundation to ensure stability and support. The installation of a wind turbine is a complex process that should ideally be handled by professionals. It includes the assembly of the turbine components and their secure



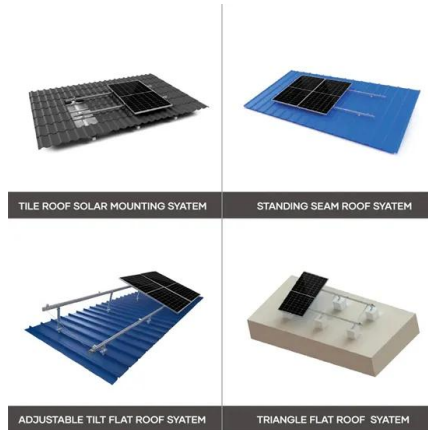
installation on the site.

How do wind turbine blades affect the efficiency of wind power?

Central to the efficiency of wind power are wind turbine blades, whose design and functionality dictate the overall efficiency of wind turbines. Innovations in turbine blade engineering have substantially shifted the technical and economic feasibility of wind power.



Installation of wind blades



Blade installation solution for Vestas wind turbine

Blade installation solution for Vestas wind turbine
Mar. 14, 2023 In cooperation with Vestas,
MacArtney Offshore Wind Solutions developed
the requisite tool for blade ...

DNVGL-ST-0054 Transport and installation of wind power plants

DNVGL-ST-0361 Machinery for wind turbines
DNVGL-ST-0376 Rotor blades for wind turbines
DNVGL-ST-N001 Marine operations and marine warranty EN 50522 Earthing of power ...



[Sjøhest Blade Installation](#)

The Sjøhest - Norwegian for 'seahorse' - is a Wind Blade Installation (WBI) solution. GustoMSC started the Sjøhest development in cooperation with NOV Lifting & Handling in Norway in early ...



A Comprehensive Guide to Installing a Vertical Axis ...

This comprehensive guide will provide a step-by-step approach to installing a vertical-axis wind turbine. It is important to properly install a vertical-axis wind turbine to maximize energy efficiency and safety.. This guide will ...



Blade Gripper

The CTX Blade Gripper is a unique tool designed to address the lifting challenges commonly encountered during wind turbine blade operations. Its versatile functionality enables a wide range of tasks, including safe and efficient blade ...

Offshore Wind Turbine Installation

Wind turbine installation Constructing an offshore wind farm - in particular, installing the turbines - is a complex procedure: from choosing the right foundations, to shipping components to the ...



Wind Turbine Installation Scotland, Repair & Maintenance

AIS Wind Energy's wind turbine installation offering is full-service, including logistics support and a specialist lifting provision available to any onshore wind farm.. As part of AIS Group, we're ...





Wind Turbine Installation England, Repair

Throughout an onshore wind turbine's life, it may be necessary to carry out component replacements for wind turbine blades, gearboxes, generators, blade bearings and main ring bearings. AIS Wind Energy supports English wind ...



CE UN38.3 MSDS



Innovative Yoke for Safe Wind Turbine Blade Lifting

This allows us to install blades more safely and efficiently, the latter which helps us reach our goal of lowering the cost of wind energy," he states. The B75 lifting yoke will be ...

The Eight Stages of Wind Turbine Installation

Here, we identify our eight stages of successful wind turbine installation and explain how AIS Wind Energy can provide vital support, expertise and resource for your next project: 1. Planning and method statement.



Installation of offshore wind turbines: A technical review

For installation of offshore wind turbine components, significant interests have been shown in the single-blade installation method. To facilitate the installation in higher wind ...



External Lightning Protection System for Wind Turbine Blades ...

Abstract--The installation of a lightning protection system for wind turbine blades has been adapted from other industries (i.e. building, aircraft) where a lightning down conductor is ...



NOV, GustoMSC unveil wind turbine blade installation solution

In an effort to streamline the process of installing blades for offshore wind turbines, NOV Lifting & Handling and GustoMSC have developed the Sjøhest Wind Blade ...

Turbine Blade Installation Cradle, Lifting , Britlift

Our Installation Cradle is the perfect solution for handling blades. Designed and made to order, our offshore wind equipment can be supplied on-time and on-budget. View the rest of the ...



The Ultimate Guide to Residential Wind Turbines

This conversion is carried out using wind turbines, these are mechanical structures with rotating blades that capture the wind's energy that causes them to turn. These rotating blades are then ...



Wind turbines

Wind blows over the turbine, forcing the blades to rotate. The rotating blades connect to gears that drive a generator. In Wales and Northern Ireland, you must have planning permission before you install a wind turbine. ...



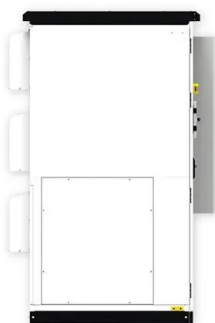
[Design of Wind Turbine Blades](#)

Maintenance for the blades, and Alexander Stäblein worked with wind turbine blade Fluid-Structure Interaction models at DTU Wind Energy, as Javier Martinez Suarez did at the Institute of Fluid ...



[Installation Guide for Small Wind Turbines](#)

Step 5: Installation of the Turbine. The installation of a wind turbine is a complex process that should ideally be handled by professionals. It includes the assembly of the turbine components ...



Repair Or Replace: Determining The Best Route For Your Wind Turbine Blades

Knowing whether to repair or replace wind turbine blades is integral to wind farm output and profitability. Making this decision requires the proper specialist support, expertise, ...



Home Wind Turbines

The wind turbine must be removed as soon as practically possible when no longer needed for Microgeneration. Be sited as far as practically possible to limit the impact on the amenity of the local area. The installation must not be sited ...



114KWh ESS



Blades installation: more options than you might think

Although in general each wind turbine model has only one installation procedure, several technical alternatives have been developed through the years. The quicker ...



How is a Wind Turbine Installed and Who Installs Them?

The Guide To Wind Turbine Installation. Wind turbines are energy-producing towers in the sky. An average onshore wind turbine is about the same height as the Statue of Liberty. Once built, wind turbines are relatively ...



How is a Wind Turbine Installed and Who Installs Them?

The larger the wind turbine, the larger its nacelle will be. The nacelle has the ability to rotate in order to point the wind turbine towards the direction of the wind. Step Three: ...



[Wind Turbine Installation Cost Guide 2024](#)

Investing in a wind turbine is a significant commitment, but understanding the installation costs can help you make an informed decision. In the UK, the cost of installing a ...



[How To Replace Windshield Wipers](#)

Position the blade upside down next to the wiper arm and align the wiper arm rod with the circular opening in the adapter. Then slide the wiper blade into the arm and rotate the wiper blade down so the tab on the wiper arm locks the wiper ...

Floating Offshore Wind A Review of Installation Vessel ...

wind loads during blade installation [8]-[12]. In the fit out harbour, a sheltered location with minimum motions due to waves is required. Table II describes the various vessel requirements ...



The Eight Stages of Wind Turbine Installation

7. Fixing wind turbine components in place on-site. AIS Wind Energy's specialist installation team will assemble all components and install and fix the wind turbine's five major parts (foundation, tower, rotor, hub, nacelle ...



Contact Us

For catalog requests, pricing, or partnerships, please visit:
<https://www.vdbconstruction.co.za>