

Is coal a renewable or nonrenewable energy source





Is coal a renewable or nonrenewable energy source

Renewable and nonrenewable energy resources (video) , Khan ...

Energy sources are categorized into renewable and nonrenewable types. Nonrenewable energy sources are those that exist in a fixed amount and involve energy transformation that cannot be easily replaced. Renewable energy sources are those that can be replenished naturally, at or near the rate of consumption, and reused.



Coal

A widely-available but non-renewable resource, coal is still the second-largest source of energy in the world and the most-used fuel for electricity generation. Its usage has been on decline in the US since its peak in 2007, but global coal use has continued to increase, primarily due to high demand in China, India, and Southeast Asian countries.



Renewable energy , Types, Advantages, & Facts , Britannica

In contrast, renewable energy sources accounted for nearly 20 percent of global energy consumption at the beginning of the 21st century, largely from traditional uses of biomass such as wood for heating and cooking 2015 about 16 percent of the world's total electricity came from large hydroelectric power plants, whereas other types of renewable ...

Renewable and non-renewable energy sources Types of energy ...

Key fact. A renewable energy resource is one



that is being (or can be) replenished as it is used. Renewable resources are replenished either by: human action - eg ...



[Is Solar Energy Renewable? , Solar](#)

Solar is sometimes referred to as the primary renewable energy source because it is the most abundant, cost effective, and widely available source of renewable energy on the planet. In addition to being renewable and ...

Energy Sources: Concepts and Their Classifications

The nonrenewable energy sources are mineral coal, oil, natural gas, oil shale, bitumen, tar sands, and minerals used for nuclear energy, such as uranium and plutonium. An ...



Biofuel , Definition, Renewable Energy, Types, & Pros and Cons

Biofuel is a renewable energy source that is derived from plant, algal, or animal biomass. Biofuel is advocated as a cost-effective and environmentally benign alternative to petroleum and other fossil fuels. Learn more about the types and manufacture of biofuels as well as their economic and environmental considerations.





1.13: Non-renewable energy sources

INTRODUCTION Sufficient, reliable sources of energy are a necessity for industrialized nations. Energy is used for heating, cooking, transportation and manufacturing. Energy can be generally classified as non-renewable and renewable. Over 85% of the energy used



10.2: Non-Renewable Energy Sources

Coal is the largest domestically produced source of energy. Coal production has doubled in the United States over the last sixty year (Figure (PageIndex{1})). Current world reserves are estimated at 826,000 million tonnes, with nearly 30% of that in the United States.

Coal

A widely-available but non-renewable resource, coal is still the second-largest source of energy in the world and the most-used fuel for electricity generation. Its usage has been on decline in the US since its peak in 2007, but global coal ...



Is Biomass Really Renewable?

Biomass, a renewable energy source derived from organic matter such as wood, crop waste, or garbage, makes up 4.8 percent of total U.S. energy consumption and about 12 percent of all U.S. renewable energy. Wood is the largest biomass energy source. In





Wind Energy

Wind energy is a form of renewable energy, typically powered by the movement of wind across enormous fan-shaped structures called wind turbines. Once built, these turbines create no climate-warming greenhouse gas emissions, making this a "carbon-free" energy source that can provide electricity without making climate change worse.



[U.S. energy facts explained](#)

Download image U.S. primary energy consumption by energy source, 2023 total = 93.59 quadrillion British thermal units total = 8.24 quadrillion British thermal units 1% - geothermal 11% - solar 18% - wind 5% - biomass waste 32% - biofuels 23% - wood 10%

[Renewable energy explained](#)

What role does renewable energy play in the United States? Until the mid-1800s, wood was the source of nearly all the nation's energy needs for heating, cooking, and lighting. From the late 1800s until today, fossil fuels--coal, petroleum, and natural gas--have



Energyland

The primary energy sources can be renewable or nonrenewable with the latter remains the dominant source of energy today. Non-renewable Energy Coal, petroleum, natural gas, propane and uranium are nonrenewable energy sources. These energy sources are



11.2: Non-Renewable Energy Sources

Coal is the largest domestically produced source of energy. Coal production has doubled in the United States over the last sixty year (Figure (PageIndex{1})). Current world reserves are estimated at 826,000 million tonnes, with nearly 30% of that in the United States.

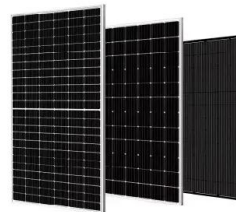


Sources of Energy: A Comparison , CFR Education

There are three main categories of energy sources: fossil fuel, alternative, and renewable. Renewable is sometimes, but not always, included under alternative. Fossil Fuels: Petroleum, Coal, and Natural Gas Fossil fuels formed over millions of years ago as dead

Coal

Coal basics Coal takes millions of years to form Coal is a combustibile black or brownish-black sedimentary rock with a high amount of carbon and hydrocarbons. Coal is classified as a nonrenewable energy source because it takes millions of years to form. Coal



Energy Mix

Coal has been a critical energy source and a mainstay in global energy production for centuries. But it's also the most polluting energy source : both in terms of the amount of CO 2 it produces per unit of energy, and the amount of local air pollution it creates.



Renewable Energy Explained

Types of Renewable Energy Sources
Hydropower: For centuries, people have harnessed the energy of river currents, using dams to control water flow. Hydropower is the world's biggest source of renewable energy by far, with China, Brazil, Canada, the U.S., and Russia being the leading hydropower producers.

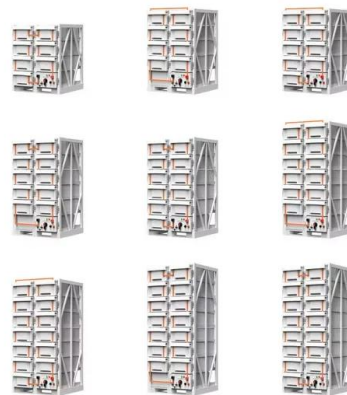


Energy Sources: Concepts and Their Classifications

The nonrenewable energy sources are mineral coal, oil, natural gas, oil shale, bitumen, tar sands, While some energy resources may be transported from one country to another - like oil, natural gas, and coal - renewable energy sources have to be explored

Nonrenewable Energy Sources

Since energy generation by the coal industry is energy-intensive therefore, the CE application to reduce the excess energy consumption applied mostly on non-renewable sources of energy. No study in CE performance literature focuses on the end-use of energy for example, on the behavior of consumers regarding the use of energy sources etc.



Is Nuclear Energy Renewable or Nonrenewable?

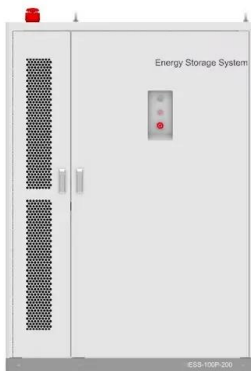
Solar Energy - The sun is a continuous source of energy that is not depleted as we use it. Although it will one day burn itself out, the sun will be a renewable form of energy for as long as life is supported on earth. Wind Energy - The wind is almost guaranteed





Non-renewable energy sources -- Science Learning Hub

Non-renewable energy resources cannot be replaced - once they are used up, they will not be restored (or not for millions of years). Non-renewable energy resources include fossil fuels and nuclear power. Fossil fuels (coal, oil and natural gas) were formed from animals and plants that lived hundreds of millions of years ago (before the time of the dinosaurs).



Renewable energy

Renewable energy (or green energy) is energy from renewable natural resources that are replenished on a human timescale. The most widely used renewable energy types are solar energy, wind power, and hydropower. Bioenergy and ...

Nonrenewable Resource: Definition, Features, and Examples

The call to use renewable resources, especially as energy sources, is becoming more common. That's because our dependence on and consumption of nonrenewable resources is causing a rapid decline in



Coal

Disadvantages Coal is a nonrenewable source of energy. It took millions of years to form, and a finite amount of it exists on our planet. Although it is a consistent and reliable source of energy at this point in time, it ...



Fossil fuels--facts and information

These non-renewable fuels, which include coal, oil, and natural gas, supply about 80 percent of the world's energy. They provide electricity, heat, and transportation, while also ...



US Energy Statistics and Data Trends: Renewables, fossil fuels

Combined, renewable energy sources overtook nuclear power, considered nonrenewable, though zero-emissions, as the second-leading energy category in 2011. Renewable and nuclear energy In 2021, Americans used 12.1 quadrillion BTUs of energy sourced from all renewable sources .

Contact Us

For catalog requests, pricing, or partnerships, please visit:
<https://www.vdbconstruction.co.za>