

Is it OK to connect photovoltaic panels in parallel





Overview

What is solar panel series vs parallel wiring?

When discussing solar panel series vs parallel configurations, parallel wiring is a distinct approach to connecting multiple solar panels. In a parallel connection, all positive terminals of the solar panels are connected together, and all negative terminals are likewise joined. This setup differs significantly from solar panels in series.

Can solar panels be connected in parallel?

(Source: Alternative Energy Tutorials) Connecting solar panels in parallel requires wiring each panel's positive terminals together and then all the negative terminals to each other. Essentially, the opposite of series wiring, with parallel, amperage accumulates and voltage stays constant.

Does connecting solar panels in parallel affect wattage?

No. Connecting solar panels in serial or parallel does not impact how much wattage they produce in laboratory conditions. Connecting solar panels in parallel increases amperage and keeps voltage constant. Series connections produce higher voltage while maintaining amperage, regardless of how many panels you use.

Why do solar panels need parallel wiring?

Parallel wiring leaks more energy over long distances than series connections. Less Resistant to Heat: Believe it or not, solar panels suffer in the heat. Direct sun exposure is optimal for electricity production, but solar panel efficiency declines rapidly as the temperature rises above 25°C.

Can I install solar panels as a series or parallel circuit?

It is also possible to install solar as a combination of series and parallel circuits to try and maximize the advantages of both types of wiring. This combination can also help you achieve a desired amount of voltage or current depending



on what your needs are.

Should 12V solar panels be wired in series or parallel?

12V solar panels can be wired in either series or parallel, depending on your system requirements. For higher voltage systems, wire them in series to increase the overall voltage. For increased current and better performance under shaded conditions, wire them in parallel.



Is it OK to connect photovoltaic panels in parallel



Should you put your solar panels in series or parallel?

Solar panels are wired to each other in two different ways: series and parallel. Every solar panel has a negative and positive terminal, just like the batteries you use at home, ...

How to Connect 3 Solar Panels in Parallel

This means each solar panel is connected to every other solar panel in the module. After this, let's learn how to connect 2 solar panels in parallel. How to Connect 2 Solar ...



The Complete Guide for Solar Panel Connectors

To connect solar panels in parallel, you require an additional component known as an MC4 combiner (or MC4 multi-branch connector), this name differs for other types ...

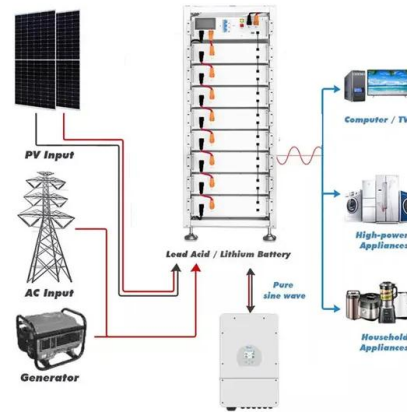


Can You Connect Different Wattage Solar Panels ...

Solar panel voltages must match to properly connect together, so check voltage ratings before connecting panels. Most panels will be either 12V or 24V nominal. b) Wiring configuration is important - panels can be linked



in ...



Understanding the series and parallel connection of solar panels

The resulting effect is to produce a solar panel system with an increased amperage rating (the sum of the individual amperages in the parallel array) while the total ...

Should I connect my Solar Panels in Series or Parallel?

So when connecting Solar Panels in series always try to keep the electrical properties of the solar panels identical to get the full benefit of the solar array. Now lets look at ...



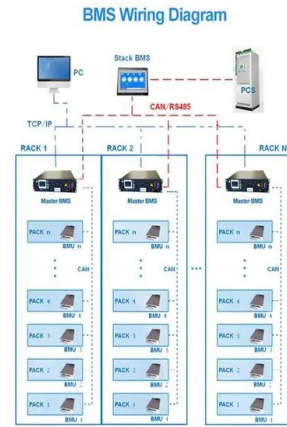
Connecting Solar Panels in Series Vs Parallel

How Connecting Solar Panels in Series Vs Parallel Differs? Connecting PV panels in series increases the voltage but amps remain the same, but in parallel connection, ...



How to Connect Solar Panels in Series and Parallel

Whenever you connect with each other a 60W solar panel to a 100W panel in series, the gross hooked up power is likely to be 160W, given that the two solar panels are of ...



A Step-by-Step Guide to Wiring Solar Panels in ...

This information can usually be found on the back of the solar panel or in the manufacturer's specifications. 3. Connect the positive terminals of the solar panels: Take the positive terminal of the first solar panel and connect it to the ...

Solar Panel Series vs Parallel, SolarLab

First of all, let's start by saying that there are 2 ways to connect photovoltaic modules together: in series or in parallel. Do you know the main differences between the two? ...



The Difference Between Wiring Solar Panels in Series or Parallel

Parallel Solar Panel Wiring Voltage and Amps in Parallel. To wire solar panels in parallel, connect all of the positive terminals on each panel together and then do the same for ...





Ultimate Guide to Solar Panels in Series vs. Parallel

Jackery portable solar panels' charging efficiency is up to 25%, which uses solar energy to its fullest potential. It is simple to connect your power station and solar panel. ...



Connecting Solar Panels in Series Vs Parallel

We have learned, how to wire and connect solar panels in series vs. parallel under different conditions. Ultimately, for faster charging of the battery, it is better to connect the panels in series rather than parallel. Also, ...



Parallel Connected Solar Panels For Increased Current

Photovoltaic solar panels generate a current when exposed to sunlight (irradiance) and we can increase the current output of an array by connecting the pv panels in parallel. That is connecting solar panels in parallel increases the ...



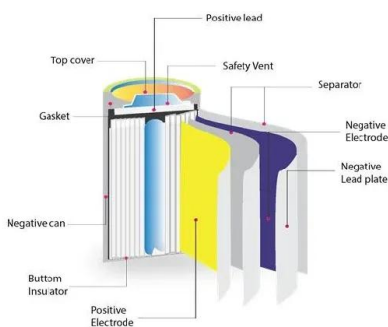
Solar Panel Series vs Parallel: What's The Difference

Wiring Solar Panels in Parallel. When discussing solar panel series vs parallel configurations, parallel wiring is a distinct approach to connecting multiple solar panels. In a parallel connection, all positive terminals ...



Connecting Multiple Solar Panels - Series vs. Parallel

To design a solar PV system for any household, it is necessary to consider several parameters like the available solar resource, amount of power to be supplied by the system, solar panel efficiency, autonomy of the system ...



How to Wire Two or More Solar Panels in Parallel

In this case, it is possible to wire the two 6V panels in series and then wire the resultant array in parallel to the 12V panel. However, the latter type of connection is at the expense of efficiency. ...

How to wire solar panels in series vs. parallel

The thing is, most solar panel systems are larger than 12 panels. So, to have more panels in the system, you could wire another series of panels, and connect those series in parallel. This ...



How Series Vs Parallel Wired Solar Panels Affects Amps & Volts

The amps and volts of a solar panel array can be affected by how the individual solar panels are wired together. This blog post is going to teach you how the wiring of a solar panel array ...



Solar Panel Series vs. Parallel: Choosing Configuration

No, wiring solar panels in parallel does not increase voltage. Instead, it keeps the voltage the same as one panel while increasing the current. To increase voltage, panels need to be connected in series. Do I need to fuse ...

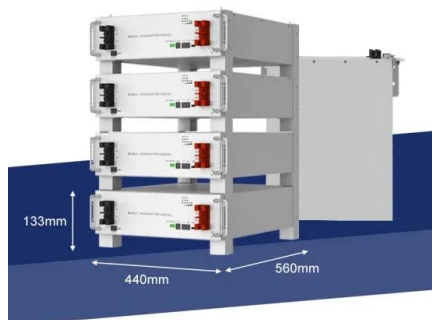


Connecting Solar Panels in Series or in Parallel?

If heat (or other factors) hinder solar panel efficiency to the degree that voltage output decreases below the minimum requirement, adding more PV panels wired in parallel will not solve the problem. Thicker, More ...

Guide to Solar Panel Parallel vs Series Wiring

Electrical current, voltage, and power in solar panel systems 101. Whether your solar panels are connected in series or in parallel, there are three fundamental concepts to understand about electricity before you get ...



Solar Panels in Parallel: How to Connect for Maximum ...

Learn how to connect solar panels in parallel to increase current output while maintaining a constant voltage. Key takeaways: Connecting solar panels in parallel increases current output. Parallel connections are ideal for lower ...



Connecting Solar Panels in Series or in Parallel: Which ...

Connecting additional PV panels in parallel increases current without increasing voltage. As a result, parallel wiring can be ideal for 12V power systems, like those found in caravans and RVs. Also, consider your solar ...



Are blocking diodes really needed for solar panels in parallel?

So my conclusion would be that the blocking Schottky diodes do nothing in most practical situations, and in some rather rare situations only save some residual efficiency, but ...

Solar Panel Connection

Connecting two portable solar panels, or any other type of solar panel, (same wattage) in parallel will multiply the total power output current by 2 and keep the system voltage at the same level. ...



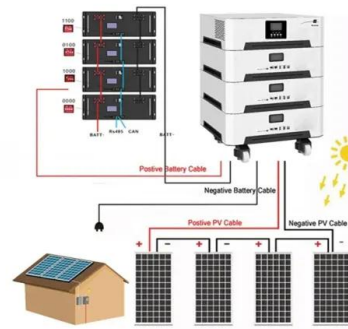
[Solar Panel Series & Parallel Calculator](#)

(You may also need to buy inline MC4 fuses and connect them to the positive cable of each solar panel.) I'll show you how to wire 2 panels in parallel using Y branch connectors. To do so, connect the 2 positive solar ...



Wiring Batteries in Series vs Parallel in Solar Power System

Advantages of wiring batteries in parallel
Increased Capacity(Ah) Connecting batteries in parallel increases the total capacity while keeping the voltage of the battery system ...

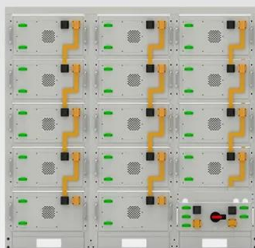


Series, Parallel & Series-Parallel Connection of PV Panels

Solar Module Cell: The solar cell is a two-terminal device. One is positive (anode) and the other is negative (cathode). A solar cell arrangement is known as solar module or solar panel where ...

Shading Solar Panels Series or Parallel

Multiple solar panels can be connected in series or parallel. Most of the time, your panels will be connected in series. you need a hybrid solar panel setup (series and parallel combination). (Voc*1.25= max input ...



Battery String-S224

- 1C Charge/Discharge
- Easy configuration and maintenance
- Power supply can be single battery string or parallel battery strings

Wiring Solar Panels in Series vs Parallel: Which Is Better?

Connecting in parallel. Solar cells can also be arranged in parallel, where each solar panel is connected to every other panel in the circuit. Unlike connecting in series, connecting in parallel allows the voltage to stay ...



Contact Us

For catalog requests, pricing, or partnerships, please visit:
<https://www.vdbconstruction.co.za>