

Is it better to charge lithium batteries slowly





Overview

Is fast charging better than slow charging for a lithium battery?

There are several factors to consider regarding fast charging vs. slow charging for your lithium battery. Fast charging offers the convenience of quick power replenishment. Still, it may increase heat generation and cause battery degradation over time.

What is a slow charging lithium battery?

Slow-charging lithium batteries Slow charging, or trickle or conventional charging, is the traditional method of recharging lithium batteries. It involves using lower current levels and longer charging times than fast charging.

Can a lithium battery be charged fast?

With fast charging, it's possible to charge a lithium battery from 0% to a considerable percentage in minutes. However, it's important to note that not all lithium batteries are compatible with fast-charging technology. Pros: One of the critical advantages of fast charging is the time-saving aspect.

What happens if you incorrectly charge a lithium battery?

Incorrect charging methods can lead to reduced battery capacity, degraded performance, and even safety hazards such as overheating or swelling. By employing the correct charging techniques for particular battery chemistry and type, users can ensure optimal battery performance while extending the overall life of the lithium battery pack.

Why is slow charging a battery a good idea?

The slower charging process helps maintain a lower temperature, reducing the risk of overheating and potentially damaging the battery cells. Slow charging is especially recommended for older or degraded lithium batteries, as it provides a more controlled and gentle charging experience. Cons:.



What happens if you charge a lithium battery with a high voltage?

Charging a Lithium battery with a higher Lead-Acid charging voltage will cause the Lithium Battery's Battery Management System (BMS) to self-protect and disconnect the battery from the charging source. Additionally, determining state-of-charge and charge termination using voltage is more difficult with Lithium than with Lead-Acid.



Is it better to charge lithium batteries slowly



Lithium-Ion Batteries: Charging Guide for Maximum Endurance

Lithium-ion batteries don't like extreme charge conditions. This is the most important piece of advice we can give you, and it's the basis for all that is to follow. Almost all modern

Understanding Slow Battery Charging: Causes and Quick Fixes

1 ??· Charger and Cable Quality: The quality of the charger and cable used can significantly impact charging speed. Low-quality or incompatible chargers may not provide the necessary ...

APPLICATION SCENARIOS



How to Care for Your Laptop's Battery (So It Lasts Longer)

There is no "memory" to reset in lithium-ion batteries, unlike the nickel-cadmium batteries of yore. iFixit recommends draining your phone or laptop completely to calibrate the battery gauge. This is a very small hit to battery longevity, but it gives your device a better estimate of its battery life and percentage remaining over a very long time, and prevents unexpected shutdowns and

Slow Charge vs. Fast Charge: What's Better for Your EV Battery

Let's take a look at how a slow charge and fast charge affect your car's battery. EV Charging Speeds Generally speaking, EV charging comes



in three different speeds : level 1, level 2 and level 3 -- also called direct current fast chargers (DCFC).



Is it better to charge batteries in series or parallel?

Tips for Properly Charging Batteries
Tips for Properly Charging Batteries To ensure that you charge your batteries effectively and prolong their lifespan, here are some tips to keep in mind: 1. Read the manufacturer's instructions: Before charging any battery, take

How to Charge a Deep Cycle Battery: All Steps to ...

Gel batteries: Charging can span anywhere from 10-14 hours, considering factors like battery size and charging voltage. Determining the Right Time to Recharge An essential practice for maintaining a deep cycle battery's ...



Optimal Lithium Battery Charging: A Definitive Guide

Secrets to Proper Charging. Charging a lithium battery pack may seem straightforward initially, but it's all in the details. Incorrect charging methods can lead to reduced battery capacity, degraded performance, and ...



Debunking Lithium-Ion Battery Charging Myths: Best ...

Myth 3: Batteries Should Be Charged Slowly Over Time. Many believe that slow charging is the key to extending battery life. At the same time, extreme fast charging can generate heat and stress the battery; moderate fast charging has ...



5 Easy Mistakes to Avoid When Charging Lithium-Ion Batteries

1. Using Incompatible Chargers Charging your lithium-ion batteries with anything other than a compatible charger can damage them beyond repair. The difference lies in the voltage required to deliver an effective charge. Lead acid battery chargers rely on varying and

Charging your lithium-ion batteries: 5 expert tips for a ...

Most li-ion batteries can only withstand a maximum temperature of 60 C and are recommended to be charged at a maximum of 45 C under a C/2 charge rate, whereas Saft's MP range can sustain a C charge rate up to 60 C ...



CE UN38.3 MSDS



[Charge and maintain your iPhone battery](#)

As lithium-ion batteries chemically age, the amount of charge they can hold diminishes, resulting in reduced battery life and reduced peak performance. The one-year warranty includes service coverage for the battery in addition to rights provided under local consumer laws.



The Impact of Charging Speed: Fast Charging vs ...

In this comprehensive guide, we will delve into the charging process of lithium batteries, explore the benefits and drawbacks of both fast and slow charging methods, highlight the critical differences between them, and ...



How to maximize battery life: Charging habits and ...

Limiting your smartphone's maximum charge to 80-90% is better for the battery's health than topping up to completely full everytime. Use fast charging and wireless charging technologies sparingly

Is Slow Charging Better for New Lead Acid Batteries?

When it comes to charging a new lead acid battery, one of the most common questions is whether it's better to charge it quickly or slowly. The answer to this question isn't straightforward, as there are several factors to consider. In this article, I will explore the



Is It Better to Keep Lithium-Ion Batteries Charged?

1. Avoid Extreme Temperatures Lithium-ion batteries don't like extreme heat or cold. So if you're using your device in an environment that is very hot or very cold, try to take breaks in a temperature-controlled area. This will help prolong the life of your battery.
- 2.



Why Charging Your Gadgets Over 80% Is Such a Bad ...

Charging your phone's battery to 100% is drastically shortening its useful life. But the fix is easy, and while auto companies have known about this and mitigated its consequences for some time, now most major smartphone brands--including ...



Charging your lithium-ion batteries: 5 expert tips for a longer

In this article, we will explain how these batteries work and share our 5 top tips on how to charge your industrial-grade lithium-ion batteries to optimize their lifespan. You'll find out how balancing charging speed and rate is key for industrial applications, just as it is for your mobiles, laptops or e-bikes.

Optimal Lithium Battery Charging: A Definitive Guide

In addition, different types of lithium batteries may have different charging requirements. In addition, please pay attention to the charger's current rating as it determines how quickly or slowly the battery will charge. ...



Why your phone is charging slowly and how to fix it

The screen is known for being the #1 battery-sucker, but rogue apps can do much more to kill your battery and keep it from charging quickly. Android apps often boot themselves up or run in the



Is a Slower Charger Better for Battery Life? [Solved]

How Charging Rates Affect Battery Life Charging rates affect battery life more than you might realize. Let's take a look and find out the score. How Charging Generates Heat and Can Damage Batteries When we charge our phones, they generate heat. This is



For lithium-ion batteries to last, slow charging isn't the answer

"For the last 10 or 20 years, we've always been told to charge as slowly as possible, to trickle charge, so that heat is reduced in the battery and it lasts longer," said Chueh. "What we



16 Electric Bike Battery Charging Tips (How, When, & Where to Charge)

Most newer lithium-ion bike batteries need charging regularly. So, if you are riding your electric bike 3 times per week and you see your battery decrease by 50-60% at the end of your third ride, then this would be a good time to charge it.



Why do EVs charge slowly? Lithium battery limits explained

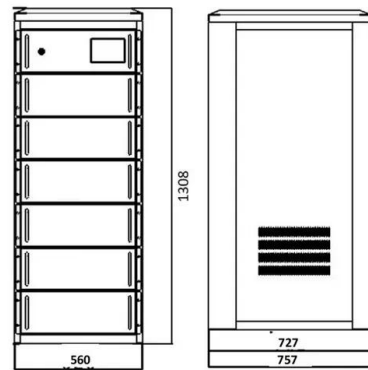
You may have seen features on laptops that prioritize battery health by capping maximum charging at 80%. It's common practice now for phones to schedule charging rates so they only reach 100%





Is it better to charge a lithium battery fast or slow?

Slow Charging: Pros: Minimizes heat buildup, reducing potential damage to battery cells. Allows for better balancing between individual cells, ensuring optimal ...



How to Charge a Car Battery The Best Way

The best way to charge a car battery is by slow-charging it, as this protects your battery's health. Charging a car battery too fast can actually damage it. Therefore, it is better to always charge with lower amps during a longer period instead if you are not in hurry.

Lithium battery charging best practices (How to

Lithium batteries charge at 95% to 98% efficiency, which means that if 1000 watts of power is input to the battery, the battery retains 950 to 980 watts. Lithium batteries maintain this efficiency for their useful lifetime. Lead-Acid batteries, ...



- 100KWH/215KWH
- LIQUID/AIR COOLING
- IP54/IP55
- BATTERY 6000 CYCLES

6 Practical Ebike Battery Charging Tips for Prolonging Your E ...

Correctly charging your lithium e-bike battery can add up to 500 to 1,000 extra charging cycles, giving you potentially years of additional use. It's not just about saving money; it's about maximizing every ride. In this guide, we will share practical charging e-bike battery tips for you and help keep your e-bike power



What Speed Should You Charge Your Electric Car At?

One advantage of charging slowly is keeping your battery healthy. Time for a very quick lesson in lithium-ion batteries you find in EVs - as you charge or discharge them, the internal resistance



Best Practices for Charging, Maintaining, and Storing Lithium Batteries

Welcome to our comprehensive guide on lithium battery maintenance. Whether you're a consumer electronics enthusiast, a power tool user, or an electric vehicle owner, understanding the best practices for charging, maintaining, and storing lithium batteries is crucial to maximizing their performance and prolonging their lifespan. At CompanyName, we have compiled a...

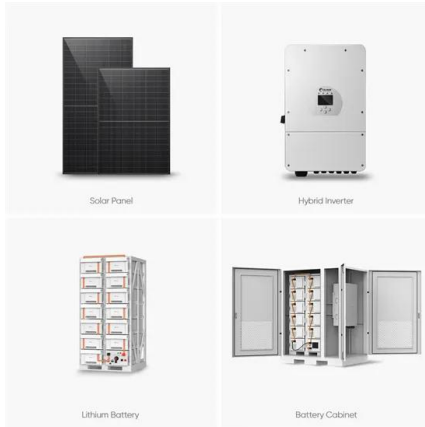
Charging Lithium Batteries: A Comprehensive Guide

1. Standard Charging: The standard charging method involves connecting the battery to the charger and allowing it to charge at a moderate rate. This method is safe and ...



Should I Charge My Laptop to 100? The Truth Behind Optimal ...

Instead, these batteries perform better with partial discharges and regular top-ups. Charging the battery to around 80% and then allowing it to discharge to around 20-30% before recharging is considered an optimal charging strategy for Li-ion batteries.



[Lithium Ion Battery Charging Time Calculator](#)

Is it better to charge lithium batteries slowly?
Yes, slow charging is best for lithium-ion batteries. Fast charging can harm the battery and shorten its life. Try to charge your devices at a slow and steady pace, using the charger that came with them. Is it okay to



Contact Us

For catalog requests, pricing, or partnerships, please visit:
<https://www.vdbconstruction.co.za>