

Is the milky way part of our solar system





Overview

The Milky Way is the galaxy that includes the Solar System, with the name describing the galaxy's appearance from Earth: a hazy band of light seen in the night sky formed from stars that cannot be individually distinguished by the naked eye. The Milky Way is a barred spiral galaxy with a D25 isophotal diameter.

In the epic poem , the Milky Way is created from the severed tail of the primeval salt water , set in the sky by , the Babylonian , after slaying her. This story was once.

Sun's location and neighborhoodThe is near the inner rim of the , within the of the , between the and Split linear structures (formerly). Based upon studies of stellar orbits around Sgr A* by Gillessen.

The Milky Way contains between 100 and 400 billion stars and at least that many planets. An exact figure would depend on counting the number of very-low-mass stars, which are difficult to detect, especially at distances of more than 300 ly (90 pc) from the Sun. As.

The Milky Way is visible as a hazy band of white light, some 30° wide, arching the . Although all the individual naked-eye stars in the entire sky are part of the Milky Way Galaxy.

Ancient, naked eye observationsIn , (384–322 BC) states that the (c. 500–428 BC) and (460–370 BC) proposed that the Milky Way is the glow of stars not directly visible due to.

SizeThe Milky Way is one of the two largest galaxies in the (the other being the), although the size for its .

The Milky Way consists of a bar-shaped core region surrounded by a warped disk of and stars. The mass distribution within the Milky.

What type of galaxy is the Milky Way?

Our Galaxy is a spiral galaxy that formed approximately 14 billion years ago. Contained in the Milky Way are stars, clouds of dust and gas called nebulae,



planets, and asteroids. Stars, dust, and gas fan out from the center of the Galaxy in long spiraling arms. The Milky Way is approximately 100,000 light-years in diameter.

Are all stars in the Milky Way galaxy?

Our Sun (a star) and all the planets around it are part of a galaxy known as the Milky Way Galaxy. A galaxy is a large group of stars, gas, and dust bound together by gravity. They come in a variety of shapes and sizes. The Milky Way is a large barred spiral galaxy. All the stars we see in the night sky are in our own Milky Way Galaxy.

Why is Earth called the Milky Way?

It takes its name from the Milky Way, the irregular luminous band of stars and gas clouds that stretches across the sky as seen from Earth. Although Earth lies well within the Milky Way Galaxy (sometimes simply called the Galaxy), astronomers do not have as complete an understanding of its nature as they do of some external star systems.

Where is the Sun located in the Milky Way galaxy?

Graphic view of our Milky Way Galaxy. The Milky Way Galaxy is organized into spiral arms of giant stars that illuminate interstellar gas and dust. The Sun is in a finger called the Orion Spur. Graphic view of our Milky Way Galaxy. The Milky Way Galaxy is organized into spiral arms of giant stars that illuminate interstellar gas and dust.

Which galaxy is closest to the Milky Way?

The nearest of these is the Sagittarius dwarf, a galaxy that is falling into the Milky Way Galaxy, having been captured tidally by the Galaxy's much stronger gravity. The core of this galaxy is about 90,000 light-years distant.

How is the Milky Way galaxy organized?

The Milky Way Galaxy is organized into spiral arms of giant stars that illuminate interstellar gas and dust. The Sun is in a finger called the Orion Spur. Overlaid is a graphic of galactic longitude in relation to our Sun. Credit: NASA/Adler/U. Chicago/Wesleyan/JPL-Caltech



Is the milky way part of our solar system

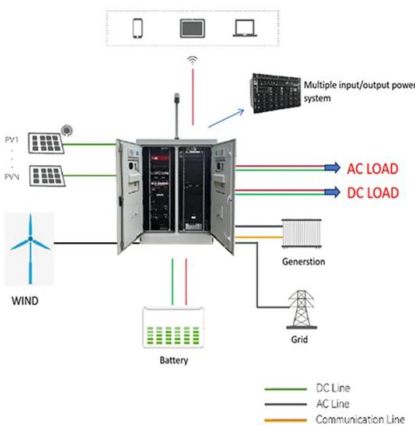


Milky Way Galaxy , Size, Definition, & Facts , Britannica

3 ???· Milky Way Galaxy (sometimes simply called the Galaxy), large spiral system of about several hundred billion stars, one of which is the Sun. It takes its name from the Milky Way, the irregular luminous band of stars and gas clouds that stretches across the sky as

15.1 The Milky Way Galaxy , Beyond the solar system

In this section learners will discover that the Sun is one of about 200 billion stars in our home galaxy, the Milky Way. Learners will be introduced to the main features of the Milky Way Galaxy which include its central bulge, flat disk and spiral arms. Students will



Solar System Facts

Our solar system is located in the Milky Way, a barred spiral galaxy with two major arms, and two minor arms. Our Sun is in a small, partial arm of the Milky Way called the Orion Arm, or Orion Spur, between the Sagittarius and Perseus ...

Milky Way Galaxy

3 ???· There are three spiral arms in the part of the Milky Way Galaxy wherein the solar system is located. Theoretical understanding of the Galaxy's spiral arms has progressed greatly since the 1950s, but there is still no complete understanding of the relative importance of the



various effects thought to determine their structure.



[A New Map of the Milky Way](#)

To put this in perspective, the last time our solar system was in this part of the Milky Way, dinosaurs roamed the planet. The part of our galaxy interior to our sun has a very thin and nearly

[Which Milky Way spiral arm is ours?](#)

The structure of the Milky Way The Milky Way is a barred spiral galaxy, which means it has a central bar. There's still a lot we don't know about the structure of our galaxy. According to the

ESS



Milky Way Galaxy

It takes 250 million years for our Sun and the solar system to go all the way around the center of the Milky Way. Read a NASA Blueshift blog post about how many stars there are in the Milky Way We can only take pictures of the Milky Way from inside the galaxy, which means we don't have an image of the Milky Way as a whole.





Milky Way Galaxy , Size, Definition, & Facts , Britannica

The Milky Way is approximately 100,000 light-years in diameter. Our solar system is 26,000 light-years from the center of the Galaxy. All objects in the Galaxy revolve ...



The Milky Way Galaxy

The annotated artist's concept illustrates the new view of the Milky Way. The galaxy's two major arms (Scutum-Centaurus and Perseus) can be seen attached to the ends of a thick central bar, while the two now-demoted minor arms (Norma and Sagittarius) are less

Our Sun: Facts

The Sun orbits the center of the Milky Way, bringing with it the planets, asteroids, comets, and other objects in our solar system. Our solar system is moving with an average velocity of 450,000 miles per hour (720,000 kilometers per hour). But even at this speed, it



[The solar system--facts and information](#)

Our solar system is made up of the sun and all the amazing objects that travel around it. Learn more about the zoom in on the Milky Way galaxy, and then zoom in again on one of its outer





What is the Milky Way?

In addition to the 100 billion to 400 billion stars in our galaxy, a similar number of planets likely exist in the Milky Way -- some of them part of solar systems and some floating freely.



In Depth , Our Solar System - NASA Solar System Exploration

Introduction The planetary system we call home is located in an outer spiral arm of the Milky Way galaxy. Our solar system consists of our star, the Sun, and everything bound to it by gravity - the planets Mercury, Venus, Earth, Mars, Jupiter, Saturn, Uranus, and

The Milky Way Galaxy

The Milky Way is our galactic home, part of the story of how we came to be. Astronomers have learned that it's a large spiral galaxy, Astronomers use this telescope to observe objects in the Solar System and the Milky Way, as well as other galaxies



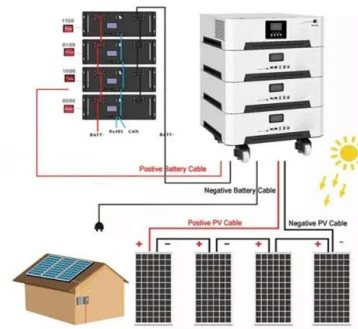
[News & Resources , Night Sky Network](#)

On that scale with our Solar System in your hand, the Milky Way Galaxy, with its 200 - 400 billion stars, would span North America (see the illustration on the right). Galaxies come in many sizes. The Milky Way is big, but some galaxies, like our Andromeda Galaxy neighbor, are much larger.



In Depth , Sun - NASA Solar System Exploration

The Sun orbits the center of the Milky Way, bringing with it the planets, asteroids, comets, and other objects in our solar system. Our solar system is moving with an average velocity of 450,000 miles per hour (720,000 kilometers per hour). But even at this speed, it



The Milky Way Facts , Size, Information, History & Definition

The Milky Way galaxy is an immense, flat, disk-shaped collection of gas, dust, and stars that spreads around 100,000 light-years across and is several thousand light-years thick. Key Facts & Summary There are at least 100 billion galaxies in the universe, and the

Milky Way Galaxy

Our Sun (a star) and all the planets around it are part of a galaxy known as the Milky Way Galaxy. A galaxy is a large group of stars, gas, and dust bound together by gravity. They come in a variety of shapes and sizes. The ...



Structure of the Solar System

The Sun is the largest object in the Solar System. The Sun's huge gravitational field keeps many other objects - planets, dwarf planets, asteroids and comets - in orbit around it. The Sun and



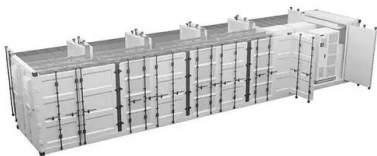
Solar System, Galaxy, Universe: What's the Difference?

by Dave Prosper of the Astronomical Society of the Pacific Many people are not clear about the difference between our Solar System, our Milky Way Galaxy, and the Universe. Let's look at the basics. Our Solar System ...



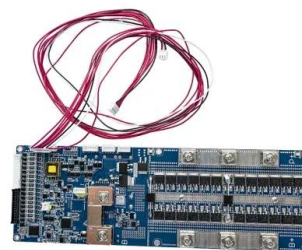
The Location of the Solar System in the Milky Way Galaxy

Obviously our solar system lies very close to the galaxy's equator. Figure 1. Polar view of the Milky Way Galaxy showing the location of the Solar System. As to our distance from the center of the galaxy, the best guess is that we are 26,000 to 28,000 light



Where is the Milky Way located in our solar system? , Socratic

Our solar system is located in the middle of one of the Milky Way's spiral arms. This question is a little backwards. The Milky Way galaxy is collection of hundreds of billions of stars. The sun, our solar system's star, is one of those. The Milky Way is considered to be a spiral galaxy. In the center lies a bright collection of older stars called the galactic bulge. The disk ...



Milky Way galaxy: Facts about our cosmic neighborhood , Space

Just as Earth orbits the sun, the solar system orbits the center of the Milky Way. Despite hurtling through space at speeds of around 515,000mph (828,000kmph) our solar ...





Galaxies

Our home galaxy is called the Milky Way. It's a spiral galaxy with a disk of stars spanning more than 100,000 light-years. Earth is located along one of the galaxy's spiral arms, about halfway from the center. Our solar system takes ...



[Science 101: The Solar System](#)

Transcript (English) - [Narrator] Our solar system is one of over 500 known solar systems in the entire Milky Way galaxy. The solar system came into being about 4.5 billion years ago when a cloud of interstellar gas and dust collapsed, resulting in a solar nebula, a

The Milky Way: Earth's home galaxy , Astronomy

Travel through Earth's home, the Milky Way! Over the past two decades, surveys using dust-penetrating infrared light have brought the general picture of our galaxy into better focus.



The Milky Way Galaxy

Our planet is part of a solar system that rotates in one of the smaller galactic branches known as the Local Arm. Earth's Sun is roughly two-thirds of the way out from what is probably a black ...



Solar system: Everything you need to know!

Milky way The Milky Way is the barred spiral galaxy in which our solar system is located. It is a vast, disk-shaped structure that contains billions of stars, as well as planets, asteroids, comets, and other celestial objects. It has a diameter of approximately 100,000

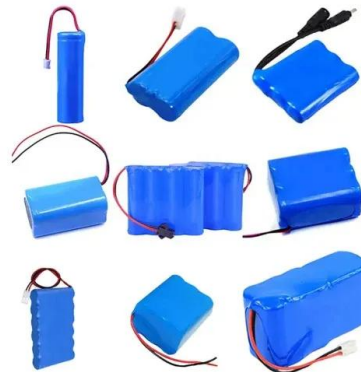


Where Are We In The Milky Way , Milky Way Facts

How many Solar Systems are in the Milky Way? Well, there is only one Solar System in our galaxy, as only ours is officially called so. But astronomers have found more ...

Where is Earth in the Milky Way Galaxy?

Earth is in a relatively quieter part of the Milky Way Galaxy. Our solar system sits in one of the galaxy's many spiral arms, called the Orion Arm or Orion Spur. Picture the Milky Way as a swirling disk with a bright center and long, winding arms. Earth is nowhere



Milky Way Galaxy

Our solar system--which includes the sun, Earth, and seven other planets--is part of this galaxy, called ... you guessed it ... the Milky Way. The Milky Way contains hundreds of billions of stars like our sun. (And like our sun, most of these stars have at least





Contact Us

For catalog requests, pricing, or partnerships, please visit:
<https://www.vdbconstruction.co.za>