

Is the milky way part of the solar system





Overview

Although most stars in the Galaxy exist either as single stars like the Sun or as double stars, there are many conspicuous groups and clusters of stars that contain tens to thousands of members. These.

The gaseous clouds known as planetary nebulae are only superficially similar to other types of nebulae. So called because the smaller varieties almost resemble planetary disks when viewed through a telescope, planetary nebulae represent a stage at the end of the stellar life cycle rather than one at the beginning. The distribution of such nebulae is.

Another type of nebulous object found in the Galaxy is the remnant of the gas blown out from an exploding star that forms a supernova. Occasionally these objects look something like planetary nebulae, as in the case of the Crab Nebula, but they differ from the latter in three ways: (1) the total mass of their gas (they involve a larger mass, essentially).

Is the Milky Way a galaxy?

The band of light that you see isn't actually milk, of course—it's a galaxy. A galaxy is a huge bunch of stars clustered together in space. Our solar system—which includes the sun, Earth, and seven other planets—is part of this galaxy, called, you guessed it, the Milky Way.

Where is the Milky Way galaxy located?

Milky Way Galaxy The Milky Way Galaxy viewed at night from Tuolumne Meadows, Yosemite National Park, California. Milky Way Galaxy, large spiral system consisting of several hundred billion stars, one of which is the Sun.

Which part of the Milky Way contains the Sun?

The part of the Milky Way containing the Sun is the disk, which is a thick platter of stars, gas, and dust about 100,000 light-years across. The galaxy's spiral arms are part of this disk, where the youngest and brightest stars of the galaxy live.

Are all stars in the Milky Way galaxy?



Our Sun (a star) and all the planets around it are part of a galaxy known as the Milky Way Galaxy. A galaxy is a large group of stars, gas, and dust bound together by gravity. They come in a variety of shapes and sizes. The Milky Way is a large barred spiral galaxy. All the stars we see in the night sky are in our own Milky Way Galaxy.

What is the structure of the Milky Way galaxy?

The Milky Way Galaxy's structure is fairly typical of a large spiral system. (Spiral galaxies and other types of galaxies are described in the article galaxy.).

Which galaxy is closest to the Milky Way?

The nearest of these is the Sagittarius dwarf, a galaxy that is falling into the Milky Way Galaxy, having been captured tidally by the Galaxy's much stronger gravity. The core of this galaxy is about 90,000 light-years distant.



Is the milky way part of the solar system



Location of Earth

One orbital period of the Solar System lasts between 225 and 250 million years. [34] [35] Milky Way Galaxy 30,000 pc 9.26×10¹⁷ Group of at least 80 galaxies of which the Milky Way is a part. Dominated by Andromeda (the largest), the ...

How Big Is the Solar System?

Our solar system is huge. There is a lot of empty space out there between the planets. Voyager 1, the most distant human-made object, has been in space for more than 40 years and it still has not escaped the influence of our ...

- ✓ LIQUID/AIR COOLING
- ✓ INTELLIGENT INTEGRATION
- ✓ PROTECTION IP54/IP55
- ✓ BATTERY /6000 CYCLES



Which Milky Way spiral arm is ours?

The structure of the Milky Way The Milky Way is a barred spiral galaxy, which means it has a central bar. There's still a lot we don't know about the structure of our galaxy. According to the

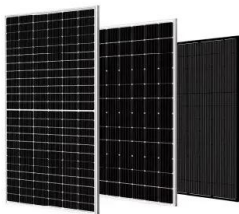
The Milky Way Galaxy

The Milky Way is our galactic home, part of the story of how we came to be. Astronomers have learned that it's a large spiral galaxy, similar to many others, but also different in ways that ...



Solar System Exploration

Our solar system is in one of the Milky Way galaxy's spiral arms called the Orion Spur. 5. A Long Way Around Our solar system takes about 230 million years to orbit the galactic center. 6. Spiraling Through Space The Milky Way is a barred ...



The Location of the Solar System in the Milky Way Galaxy

As to the thickness of the disk, most current estimates put it at around 1,000 light years thick. Obviously our solar system lies very close to the galaxy's equator. Figure 1. Polar view of the Milky Way Galaxy showing the location of the Solar System.



What is the Milky Way?

similar number of planets likely exist in the Milky Way -- some of them part of solar systems and some we see only the stars close to our solar system. The Milky Way has three main parts: the



Solar System

The Solar System is located in the Milky Way, a barred spiral galaxy with a diameter of about 100,000 light-years containing more than 100 billion stars. [269] The Sun is part of one of the Milky Way's outer spiral arms, known as the Orion-Cygnus Arm or Local



In Depth , Sun - NASA Solar System Exploration

The Sun orbits the center of the Milky Way, bringing with it the planets, asteroids, comets, and other objects in our solar system. Our solar system is moving with an average velocity of 450,000 miles per hour (720,000 kilometers per hour). But even at this speed, it

[A New Map of the Milky Way](#)

To put this in perspective, the last time our solar system was in this part of the Milky Way, dinosaurs roamed the planet. The part of our galaxy interior to our sun has a very thin and nearly



[How Many Planets Are In The Milky Way?](#)

Another couple mind-blowing facts about the Milky Way are its age (estimated to be 13.6 billion years old), and its weight (calculated to be equivalent to 1.5 trillion solar masses). Approximating the mass of the galaxy ...



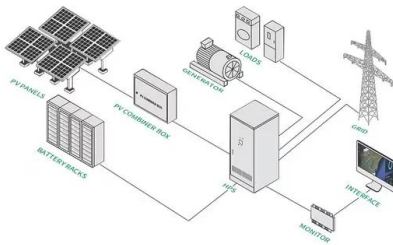
Where Are We In The Milky Way , Milky Way Facts

Scientists consider that there are at least 100 billion planets in the Milky Way, and more than 10 billion of them are terrestrial. How many Solar Systems are in the Milky Way? Well, there is only one Solar System in our galaxy, as only ours is officially called so.



Solar System Facts

Our solar system is located in the Milky Way, a barred spiral galaxy with two major arms, and two minor arms. Our Sun is in a small, partial arm of the Milky Way called the Orion Arm, or Orion Spur, between the Sagittarius and Perseus arms. Our solar system



Where is Earth in the Milky Way?

Much the same is true about our Solar System's position within the Milky Way. In truth, we've only been aware of the fact that we are part of a much larger disk of stars that orbits a common



The Milky Way Galaxy

If we could travel outside our galaxy and look back, this is what our Milky Way Galaxy might look like from above. An artist created this illustration using data collected by astronomers. Did you know that our star, the Sun, is just one of hundreds of billions of stars





Solar System Facts

Our solar system is located in the Milky Way, a barred spiral galaxy with two major arms, and two minor arms. Our Sun is in a small, partial arm of the Milky Way called the Orion Arm, or Orion Spur, between the Sagittarius and Perseus ...

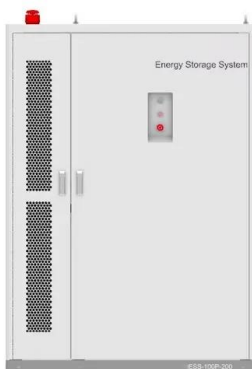


Milky Way Galaxy

Our solar system--which includes the sun, Earth, and seven other planets--is part of this galaxy, called ... you guessed it ... the Milky Way. The Milky Way contains hundreds of billions of

[How the Milky Way works , Astronomy](#)

The Milky Way Galaxy is a self-gravitating system. All self-gravitating systems have a tendency to collapse in on themselves. And they would if it weren't for other forces counteracting or



The Milky Way Galaxy

The Milky Way is our galactic home, part of the story of how we came to be. Astronomers have learned that it's a large spiral galaxy, Astronomers use this telescope to observe objects in the Solar System and the Milky Way, as well as other galaxies



Milky Way Facts: Facts about the Milky Way Galaxy

The Sun, planets, and all other objects in the solar system are part of the Milky Way. It is composed of gas, dust, and billions of stars. Each of these stars likely has its own planetary systems just like ours. The closest star to us, Proxima Centauri C, has two



How Many Planets are in the Milky Way?

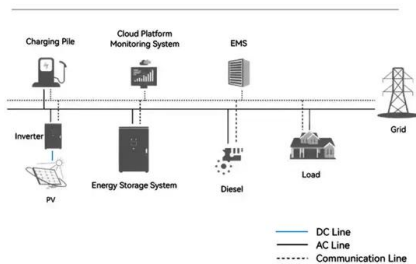
Some other planets that are located in the Milky Way, and not in our Solar System, are called exoplanets, and here are some of them:
Kepler-186f - a planet similar to our Earth.
Kepler-11 System - a planetary system composed of at least five exoplanets that orbit their star as close as Mercury does with the Sun.

The solar system--facts and information

Our solar system is made up of the sun and all the amazing objects that travel around it. Learn more about the zoom in on the Milky Way galaxy, and then zoom in again on one of its outer



System Topology



About the Planets

Our solar system has eight planets, and five dwarf planets - all located in an outer spiral arm of the Milky Way galaxy called the Orion Arm. Beyond Neptune, a newer class of smaller worlds called dwarf planets reign, including longtime favorite Pluto. The other dwarf



The motion of the solar system through our galaxy

Bottom line: Tony Dunn has created a simulation of the movement of the solar system through the Milky Way. Learn more about it here. X 120 Facebook 3 Pinterest 7 Buffer Share



Does the Sun move around the Milky Way?

Yes, the Sun - in fact, our whole solar system - orbits around the center of the Milky Way Galaxy. We are moving at an average velocity of 828,000 km/hr. But even at that high rate, it still takes us about 230 million years to make one complete orbit around the Milky Way!

Galactic Center

The Galactic Center, as seen by one of the 2MASS infrared telescopes, is located in the bright upper left portion of the image. Marked location of the Galactic Center A starchart of the night sky towards the Galactic Center The Galactic Center is the barycenter of the Milky Way and a corresponding point on the rotational axis of the galaxy.



Milky Way Galaxy

3 ???· There are three spiral arms in the part of the Milky Way Galaxy wherein the solar system is located. Theoretical understanding of the Galaxy's spiral arms has progressed ...



Contact Us

For catalog requests, pricing, or partnerships, please visit:
<https://www.vdbconstruction.co.za>