

Is the solar generator connected to an electricity meter





Overview

How does a utility meter connect to a solar panel?

There is an ALTERNATIVE UTILITY CONNECTION called a "Supply or Line Side" connection. This connection is made BEFORE the main breaker. A junction box is added between the utility meter and the main service panel. Then the wires from the utility meter, the main breaker panel, and the PV solar are connected in the junction box.

How does a solar meter work?

When you install a solar PV (photovoltaic) system on your property, it generates electricity from sunlight. This electricity can be used to power your home, and any excess can be fed back into the grid. To accurately measure and account for this energy flow, your electrical meter plays a crucial role.

How do I connect a solar generator to my electrical system?

Connecting a solar generator to your home's electrical system is actually very easy if you are already running a grid-tied solar power system. In this case, you would already be using a grid-tied power inverter to feed your solar power into the grid, so you could simply connect your solar generator through that same power inverter.

Do solar panels need a meter?

In the context of solar panels, a bidirectional meter is often required to measure electricity flowing both from the grid to your home and from your solar panels back to the grid. Smart (Net) Meter: Modern homes may be equipped with smart meters, which are designed to measure electricity usage in both directions.

How do you connect a solar inverter to a utility meter?

A junction box is added between the utility meter and the main service panel. Then the wires from the utility meter, the main breaker panel, and the PV



solar are connected in the junction box. An adequately sized PV service disconnect box must be used prior to making the connection between the junction box and the solar inverter.

Why should a solar PV system be connected to the grid?

For financial benefit. Connecting your solar PV system to the grid allows you to take advantage of the FIT, which gives you a fixed amount of money for each kWh of electricity you generate. On top of these payments for energy generation, you also receive a sum of money for feeding any surplus energy into the grid.



Is the solar generator connected to an electricity meter

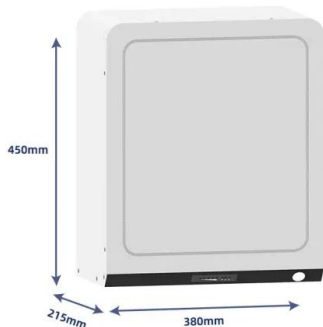


[Emlite ECA2 Solar Generation Meter](#)

Any excess energy is typically exported to the grid, maximising efficiency, cutting costs, and supporting sustainability. Solar iBoost's Sender and Clamp are installed at the household ...

[How to Connect Solar Panels To Your Home](#)

For solar energy to power your home, you need to run the system-generated electricity through the inverter and convert it into alternating current (AC). Depending on your chosen setup, you may have to connect the ...



What Is A Electricity Meter Box Outside House? How Much To ...

An electricity meter box is an important piece of equipment for the safety and security of electricity in a home, as it houses and protects the electrical wiring, service drop lines, and meters from ...

Connect a solar system

Applying for a connection. If you are connecting a new solar micro generation system or upgrading an existing system with a total inverter capacity no greater than 10kW single phase (230v) or 30kW three phase (400v) and your premise ...



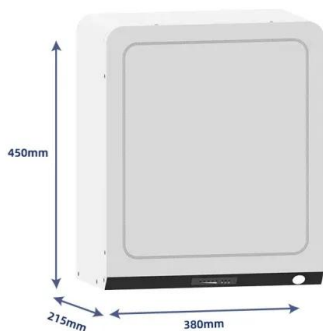
Smart Meter and Solar Panels: All You Need to Know

Solar Generator Kit; BLUETTI Premium Series; Ecosystem; Solar Panel; Expansion Battery; Portable Power Accessory; Camping & Outdoor . New. BLUETTI AC50B 700W , 448Wh. Hot. ...



How to Connect Solar Power to Your Home Electricity

Connect the solar panels to the inverter to do this task. Step 5 - Loop in the Batteries. Depending on your system, you'll either connect directly to the power inverter and ...



[Faulty Solar Generation Meter Replacement](#)

A solar generation meter records the amount of electricity generated by the solar PV system. This may automatically send meter readings back to the system owner. Eco7 are not your typical solar PV and energy storage company. ...



Solar Generators for Homes: Power Your Way to Energy ...

FAQ 2: Can I connect a solar generator to my existing electrical system? Yes, it's possible to connect a solar generator to your existing electrical system, especially if you opt for ...



CONNECTION CONDITIONS FOR GENERATORS OF ELECTRICITY FROM SOLAR ENERGY

these 'connection conditions for generators of electricity from Solar energy' are issued by Dubai electricity and water Authority for the implementation of executive council resolution no. 46 of ...

The Complete Guide to Solar Panel Wiring Diagrams

Solar panel diagrams are graphic representations of the connections you should make between each PV module and other components of the solar power system, including: Solar inverter; Charge controller; Solar ...



Connecting solar, batteries and other embedded generation

Customers may need to upgrade their meter to a Smart Meter when installing solar to ensure usage information is captured accurately for their electricity accounts. If you need to upgrade ...



Getting your Solar Panels Grid-Connected in your state

Well, lucky for you, we here at Solar Choice have written up this blog to aid you on your path to (at least partial) energy independence and a potential lucrative career as small ...



Solar PV systems connected to electrical installations

As shown in Fig 1, the PV system incorporates a number of PV modules which convert the energy of solar radiation emitted by the sun into electrical energy by means of the ...



Diagram and components of a grid-tied solar power ...

The photovoltaic generator needs two net meters between the inverter and the grid to control the energy consumed and supplied to the electrical grid. One is used to quantify the energy generated and injected into the grid ...



Where Does Your PV Generation Meter Fit?

The generation meter for solar PV will then cycle through various displays. Look for the one showing "kWh" or "total generated," which indicates the total electricity generated by your solar panels since installation in kilowatt ...



What To Do If Your Electricity Meter Runs ...

This means that whenever the solar panels are exporting to the grid - because the panels are generating electricity that's not being used in the home - the mains electricity meter starts turning backwards. The result is ...



Can Smart Meters Work with Solar Panels? November 2024

Smart meters are equipped to show the exact and real-time consumption of electricity so that the consumer is aware of their solar energy usage and can act on reducing ...

[GENERLINK , GENERLINK Transfer Switch](#)

The GenerLink transfer switch is a UL-listed, socket-mounted device that provides a safe, easy and affordable way to connect a portable generator to your home. GenerLink transfer switches ...



How Do You Connect a Backup Power Generator to Your Home?

Solar generators don't require this step, as the power comes from plugging solar panels into the generator. Other fossil-fueled power generators, like gas and diesel ...



Where Does Your PV Generation Meter Fit?

How to read your Solar Generation Meter UK. To read a solar generation meter in the UK, start by locating the meter, which is usually installed near your inverter or distribution ...



2MW / 5MWh
Customizable

ESS

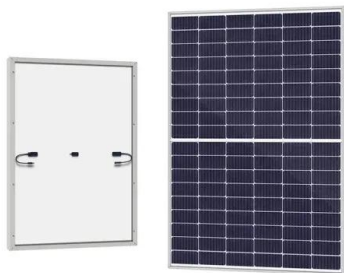


Part 1: Guide to Understanding Your Solar System Components

Like the electricity that flows from the power company through the grid and into your home by passing through the meter, electricity produced by your solar panels flows ...

How to Connect Solar Panels To Your Home

1. Determine Your Energy Needs. Before you purchase the components to build a solar power system, you need to determine how much electricity you expect to use. To do this, collect your electric bills from the past ...



Switchboards and Meters

To install a grid-connected solar power system, you'll need compatible switchboards and meters. Find out if your meter & switchboard is compatible. Skip to content. 1800 362 883 They may be in the same ...



How do solar panels work?

However, solar batteries are now available which store the power your panels have produced during the day so you can use it later. There are different types of solar batteries, all with different features and capabilities. Some are about the ...



EcoFlow's \$200 PowerStream is so clever, you might buy a \$4,000 solar ...

EcoFlow's PowerStream is a microinverter that can maximize the year-round usefulness of the company's own solar generators for just \$200. of solar to charge the ...

Solar Automatic Transfer Switch

A solar power transfer switch is an important part of a PV system. It provides a safe and reliable way to connect or disconnect the solar array to the grid. These solar transfer switches are typically mounted between the utility meter ...

Lithium battery parameters

Product capacity: 100Ah

Product size: 135*197*35mm

Product weight: 1.82kg

Product voltage: 3.2V

internal resistance: within 0.5



How to Connect a Portable Solar Generator to an Electrical Panel

There are two basic approaches to connecting a grid-tied solar panel system, as shown in the wiring diagrams below. The most common is a "LOAD SIDE" connection, made AFTER the main breaker. The alternative is a "LINE OR ...



51.2V 150AH, 7.68KWH



How to connect solar panels to the National Grid

Connecting your solar PV system to the grid allows you to take advantage of the FIT, which gives you a fixed amount of money for each kWh of electricity you generate. On top of these ...



4 Ways of reverse power flow protection in grid-connected

Export limiter and PLC both are reliable solutions for reverse power protection in a grid-connected solar power plant. But PLC's are 3 times expensive than an export limiter. ...

EcoFlow DELTA Pro FAQ: Everything You Need to Know ...

You can recharge the unit using household (AC) electricity, but it doesn't connect directly to utility power through a bidirectional meter like a grid-tied or hybrid solar system. However, you can integrate EcoFlow DELTA Pro ...



Are my solar PV panels connected to my smart meter ...

Your PV generation meter is telling you that you have flow and positive solar power but it cannot be read by your "grid (import) meter" because it is being flowed through it like it's part of the import - like a double billing!



Do I Need To Change My Meter For Solar Panels?

Your solar PV system includes an inverter that converts DC (direct current) electricity generated by the solar panels into AC (alternating current) for use in your home. The ...



Contact Us

For catalog requests, pricing, or partnerships, please visit:
<https://www.vdbconstruction.co.za>