

# John deere power flow system





## John deere power flow system

---



[BG20759: Power Flow\(TM\) Blower Kit , Shop ere](#)

BG20759: Power Flow Blower Kit Part Number: BG20759 Enhanced Material Collection: The HP Power Flow blower assembly improves material collection efficiency and ensures a tidy finish after mowing. Seamless Compatibility: Designed for the 54-in. Accel

### **BM22696: Power Flow(TM) 48X inch Blower Attachment ...**

Material Collection System Blowers ensure efficient material flow to hopper. Whether collecting grass clippings or for fall leaf clean up, the use of a blower will result in a beautiful debris free yard. Required for most decks 48-inches or ...



### **BUC11355: Material Collection System, 54A , Shop ere**

BUC11355: Material Collection System, 54A Part Number: BUC11355 Efficient Material Collection: The 6.5-bu (229-L) bagger efficiently collects material from the mower deck, ensuring thorough and effective cleaning. Reduced Plugging: The Power Flow blower and



### **Visual Guide to John Deere Power Flow Bagger Belt Diagram**

The John Deere Power Flow Bagger Belt Diagram is a visual representation of the belt configuration and routing for the power flow bagger system on John Deere lawn tractors. It outlines the path that the belt takes as it



connects the various components of the bagger system, including the mower deck, power flow blower, and collection bags.



### John Deere HC Power Flow Blower Assembly for 48

The 48/54 high-capacity (HC) Power Flow blower can be used with the EZtrak Z645 and Z655. It, along with the BM23634 hopper and BM21681 chute, will provide 6-1/2-bu (230-L) material collection system capability for the Z645 and ...



### John Deere Material Collection System for 48A Deck

Power Flow is lightweight for easy handling and minimal effect on mowing smoothness. It will not rust or corrode. Fan and housing resist wear and abrasion caused by sand. Contoured design ...



### [Twin Bagger, Power Flow and Chute](#)

The Twin Bagger package comes with a bagger, power flow and chute. With the right attachments, you'll be prepared for any job. The 7-bushel hopper material collection system (MCS) provides an efficient means of collecting grass ...





[BG20758: Power Flow\(TM\) Blower Kit , Shop ere](#)

BG20758: Power Flow Blower Kit Part Number: BG20758 Efficient Material Collection: Enhances the collection of material from the mower deck for effective maintenance. Improved Performance: Ensures smooth and effective operation, optimizing the functionality



**BM22696: Power Flow(TM) 48X inch Blower Attachment ...**

Material Collection System Blowers ensure efficient material flow to hopper. Whether collecting glass clippings or for fall leaf clean up, the use of a blower will result in a beautiful debris free yard.

**Need help with Powerflo bagger system for 345?**

45 John Deere loader Cat 1 3 pt plow and Heavy Hitch 62"powerflow 2019 X590 with 54" deck,power mulch kit and powerflow bagger 30" tiller,JD 18 cart JD 40" spike aerator 12 suitcase weights JD T105 trimmer 15 gal. tow sprayer (2) JD JS63C walk-behind



[X590 Bagger and Power Flow Installation](#)

2013 John Deere X540 with 54X Edge Xtra Deck 47 in. Snow Blower, 42 in. Hydraulic Tiller, Integral Power Sleeve Hitch Brinly Box Scraper, Brinly 40 in. Plug Aerator 3 bag power flow bagger, 10P Utility Cart LP36741 ...



### Power Flow Material Collection System for X590

Looking at purchasing the material collection system for my JD X590. just looking for pros and cons. main reason for buying is for leaf pick up in the fall would not be using it for ...



### John Deere Power Flow and material collection system

This John Deere Power Flow and dual bagging system is used but in good cosmetic condition and excellent mechanical operation. All parts are included for mounting to a 48" mower deck. The cost new is more than \$1400.00 (\$630 for bagging system; \$630 for

### BUC10288: Material Collection System, 2-Bag Attachment

BUC10288: Material Collection System, 2-Bag Attachment Part Number: BUC10288 Efficient Material Collection: The 6.5-bushel hopper, chute, and Power Flow blower provide an efficient means of collecting grass clippings and leaves, ensuring a clean and tidy



### BM21680: Material Collection System Attachment, 3 Bag, 14

BM21680: Material Collection System Attachment, 3 Bag, 14 Bushel, 48A/54A inch Part Number: BM21680 Large 14-bu (493-L) capacity allows for extensive grass or leaf collection before needing to stop. No-tools installation and removal for easy setup and



## Landscaping Equipment , Frontier MC2120 , John Deere US

The power take-off (PTO) driven system offers a large 705-L (20-bu) hopper capacity for longer periods of mowing. The following are some of the key features and benefits provided by the MC2120: PTO-driven blower for versatility, efficiency, and higher performance

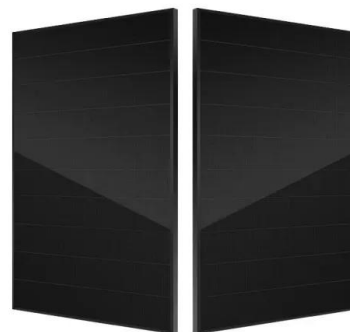


## John Deere Material Collection System BM23634

John Deere 6.5-bushel 2-Bag Material Collection Hopper Assembly This item ships via truck freight due to the size and weight. Shipping charges are determined at checkout prior to placing your order. The 6.5-bu (229-L) rear bagger efficiently collects material from the mower deck: For an EZtrak Z225 or Z245, a chute (ordered separately) moves material from the mower deck to the ...

## Power bagger for x590

I have an X590 with 48A deck and 7bu power flow bagger. I can think of no issues with the power flow system. I have not used it for leaves, just grass. If the grass is wet or tall, go slow otherwise you might plug the blower. My only issue (and it applies to all power



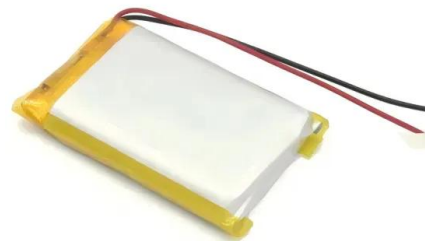
## [2-Bag Rear Bagger Parts for John Deere X350](#)

John Deere High-Performance (HP) Power Flow Blower Assembly for 48A - BG20748 (1) \$708.34 Usually available Add to Cart Quick View John Deere Hopper Cover Latch - M142410 (10) \$8.75 Usually available Add to Cart Quick View John Deere Hopper (2) \$39.



**John Deere Zero-Turn Mower 54 in. Complete Bagging System ...**

No, this Zero-Turn Mower 54-in. Complete Bagging System for Z500 Series isn't compatible with the Z540M ZTrak Mower. The compatible Material Collection System would be part number BG20757. Please consult with your local John Deere dealership as you



**BM22697: Power Flow(TM) 54X inch Blower Attachment , Shop ere...**

Material Collection System Blowers ensure efficient material flow to hopper. Whether collecting glass clippings or for fall leaf clean up, the use of a blower will result in a beautiful debris free yard. Required for most decks 48-inches or larger. For use with 54-inch



[John Deere MC519 Material Collection System](#)

7.5 cu ft heaped or 500 lb of capacity. Ideal for hauling topsoil, gravel, sand, firewood, mulch, etc. Collector: Large, 19-bu (23-cu ft) capacity with a standard equipment cover. Can be equipped with a Power Flow and Power Flow chute ...





### John Deere HC Power Flow Blower Assembly for 48 & 54 Mower

The 48/54 high-capacity (HC) Power Flow blower can be used with the EZtrak Z645 and Z655. It, along with the BM23634 hopper and BM21681 chute, will provide 6-1/2-bu (230-L) material ...



[BM21871: Power Flow\(TM\) Blower , Shop ere](#)

Blower System Parts > BM21871: Power Flow Blower Original BM21871: Power Flow Blower Part Number: BM21871 Generally, parts purchased from Shop ere are covered by the John Deere Parts Warranty, covering defects in material and For



[John Deere Power Flow for sale](#)

Shop great deals on John Deere Power Flow. Get outdoors for some landscaping or spruce up your garden! JOHN DEERE 425 445 455 TRACTOR MCS COLLECTION SYSTEM POWER FLOW BLOWER BRACKET Pre-Owned · John Deere \$119.99 \$5.24

### Landscaping Equipment , Frontier MC2120 , John Deere US

PTO-driven blower for versatility, efficiency, and higher performance. 705-L (20-bu) hopper collecting system with dump-from-seat. Mower deck boot that is easy to attach, eliminating the ...





[Deere MC519 Cart with Power Flow advice](#)

45 John Deere loader Cat 1 3 pt plow and Heavy Hitch 62" powerflow 2019 X590 with 54" deck, power mulch kit and powerflow bagger 30" tiller, JD 18 cart JD 40" spike aerator 12 suitcase weights JD T105 trimmer 15 gal. tow sprayer (2) JD JS63C walk-behind

**Power Flow Material Collection System for X590**

John Deere Tractors Lawn & Garden Tractors Power Flow Material Collection System for X590 Jump to Latest 8K views 7 replies I have a power flow for my 345 7.5 bushel (2 bag) and it takes about 8-10 min to put on with coffee and 2-3 min. off.



**BG20749: High Capacity Power Flow(TM) Blower Kit , Shop ere...**

BG20749: High Capacity Power Flow Blower Kit Part Number: BG20749 Enhanced Collection: PowerFlow attachments use a high-performance blower to boost grass clipping and debris collection, ensuring a clean and even flow into a material collection system

**Visual Guide: Understanding John Deere Power Flow Belt Diagram**

In conclusion, the John Deere Power Flow Belt Diagram is a valuable resource for anyone working with John Deere power flow systems. By using this comprehensive guide, operators and technicians can ensure proper installation, maintenance, and troubleshooting, ultimately maximizing the performance and efficiency of the equipment.





## Contact Us

---

For catalog requests, pricing, or partnerships, please visit:  
<https://www.vdbconstruction.co.za>