

Lithium battery shelf life





Overview

What is battery shelf life?

Battery shelf life is indeed a crucial factor for producers, distributors, and end users managing battery inventories. It represents how long a battery can be stored without significant loss of capacity or performance, ensuring that the battery will function properly when finally put to use.

How long do lithium batteries last?

Let's consider a side-by-side or boat powered by a lithium battery that's recharged once a day. This means that the battery should last for more than 3,000 days, which is over eight years. Which is a fantastic lifespan! By doing a few calculations, you can get a better feel for how long lithium batteries can last for you.

How to prolong the shelf life of lithium ion batteries?

There are several strategies that manufacturers, distributors, and consumers can follow to prolong the shelf life of lithium-ion batteries: Lithium batteries should be stored in cool environments, ideally between 15°C and 25°C (59°F to 77°F), and avoid high temperatures. Store at a partial charge.

How long does a lithium phosphate battery last?

When the temperature range is from 35°C~40°C for LFP, the calendar life is 5-6 years. But over 45°C, the calendar life will be shortened to 1-2 years. Different cathode materials have varying calendar life properties. For example, lithium iron phosphate (LFP) batteries often have a longer calendar life than nickel-rich chemistries.

Does storing a lithium ion battery affect calendar life?

Storing a battery at a high state of charge can contribute to degradation over time, impacting both calendar life and shelf life. In the realm of lithium-ion batteries, comprehending cycle life, calendar life, and shelf life is pivotal for



users and manufacturers alike.

Should you store lithium batteries fully charged?

It also comparatively demonstrates why you should never store lithium batteries fully charged. However, there is a secondary loss that is not recoverable and permanently lowers the capacity of the battery. This can be caused by:



Lithium battery shelf life



Battery comparison chart

Battery Comparison Chart Facebook Twitter With so many battery choices, you'll need to find the right battery type and size for your particular device. Energizer provides a battery comparison chart to help you choose. There are two basic battery types: Primary batteries have a finite life and need to be replaced. These include alkaline [...]

How Long Do Lithium Batteries Last? (The Definitive Answer)

Lithium batteries currently have the longest lifespan of all available deep-cycle batteries. Many can last between 3,000 and 5,000 partial cycles. For comparison, lead-acid batteries typically give 500 -1,000 partial cycles.



Battery Shelf Life

You might find that many manufacturers choose battery chemistry based on how the device is used. For most consumer electronics, lithium batteries last 600-1,000 life cycles. Lithium batteries have varying shelf lives. It depends on the battery's chemistry and.

[How Long Do Lithium \(Li-Ion\) Batteries Last?](#)

Most Li-ion batteries have an expected lifespan of around 500 cycles. LiFePO4 batteries have higher expected lifespans and can undergo thousands of cycles before the capacity is heavily affected. For example, the ...



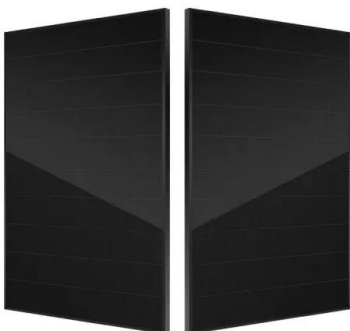
[How long do batteries last? , Batteries Plus](#)

Usually, the most expensive single-use battery on the market, lithium batteries have a long shelf life of 10-12 years but there have been some indications that they can last close to 20 years. They also supply the same level of power throughout their life cycle, with no weakening as the battery ages.



Best Practices for Charging, Maintaining, and Storing ...

Welcome to our comprehensive guide on lithium battery maintenance. Whether you're a consumer electronics enthusiast, a power tool user, or an electric vehicle owner, understanding the best practices for charging, maintaining, and storing ...



Understanding the Shelf Life of Lithium Ion Batteries

Understanding the Shelf Life of Lithium Ion Batteries Introduction Lithium-ion batteries have revolutionized the world of technology, powering everything from our smartphones to electric cars. However, despite their widespread usage and convenience, these batteries can also be unpredictable when it comes to shelf life. Understanding how long lithium-ion batteries ...



Do Lithium Ion Batteries Have A Shelf Life?

What Is The Shelf Life Of A Lithium Ion Battery· Think that you buy a pack of 9V batteries, but you don't use them all at once. You put the unused ones on the shelf so that they can be used later. In the period when they are lying on the shelf, how long they hold

- LiFePO₄
- Wide temp: -20°C to 55°C
- Easy to expand
- Floor mount&wall mount
- Intelligent BMS
- Cycle Life:≥6000
- Warranty :10 years




Battery storage, shelf life, self-discharge, and expiration

Lithium batteries, including lithium coin cell batteries, have virtually no self-discharge below approximately 4.0V at 68 F (20 C). Rechargeable lithium-ion batteries, such as the 18650 ...

Ultimate Guide to 3V Lithium Batteries: CR2032, CR123A, etc.

Lithium batteries are essential components in many electronic devices, providing reliable power in a compact form. This guide focuses on 3V lithium batteries, specifically popular types like the CR2032 and CR123A, along with their applications, advantages, and considerations. Overview of 3V Lithium Batteries 3V lithium batteries are primary (non ...



How Long Do Lithium (Li-Ion) Batteries Last?

Most Li-ion batteries have an expected lifespan of around 500 cycles. LiFePO₄ batteries have higher expected lifespans and can undergo thousands of cycles before the capacity is heavily affected. For example, the EcoFlow DELTA 2 Max is rated for 3,000 cycles before storage capacity diminishes to 80%.



Comprehensive Understanding of Lithium-ion Battery Life Cycle

In this comprehensive guide, we will delve into the intricacies of the li-ion battery cycle life, explore its shelf life when in storage, compare it with lead-acid batteries, discuss the ...



18650^{3.7V}
Li-ion
RECHARGEABLE BATTERY
2000mAh



Alkaline vs Lithium-ion Battery (12 Key Differences)

The alkaline batteries have a shelf life of 5 - 10 years while the shelf life of lithium-ion batteries is 2-3 years. However Li-ion batteries are capable of providing strong discharge throughout their life, whereas the capability of ...

How to store lithium based batteries

Military and Medical lithium based batteries can have a shelf life of up to twenty plus years. Was this article helpful? Yes No Related Articles VIDEO - How a lithium battery is made 1 793 2 VIDEO - How a lithium ion battery 1 276



How Long Do Lithium Batteries Last? (The Definitive ...

Lithium batteries currently have the longest lifespan of all available deep-cycle batteries. Many can last between 3,000 and 5,000 partial cycles. For comparison, lead-acid batteries typically give 500 -1,000 partial cycles.



How Long Will A 12 Volt Battery Last On The Shelf?

Factors Affecting the Shelf Life of a 12 Volt Battery The longevity of a 12-volt battery on the shelf is influenced by multiple factors: Battery Chemistry: Different types of batteries, such as lead-acid and lithium-ion, have varying shelf lives. Lithium-ion batteries typically offer a longer shelf life compared to lead-acid batteries, due to their chemical stability.



How long will my Energizer® batteries last in their packaging?

Q: How long will my Energizer ® batteries last in their packaging? A: Shelf life varies across our products: Energizer MAX ® AA, AAA, C, and D cells last up to 10 years in storage, while our 9V lasts up to 5 years in storage Energizer ® EcoAdvanced ® AA ...

A Guide to Battery Storage, Discharge, and Expiration

Battery Shelf Life Shelf life refers to the duration a disposable battery retains its charge unused, or for rechargeable batteries, Lithium-ion batteries should be stored in a charged state, ideally at 40% SoC. These batteries exhibit minimal self-discharge below 4



Understanding the Shelf Life of LiFePO4 Batteries

Generally, LiFePO4 batteries have a relatively long shelf life compared to other types of batteries. Most manufacturers recommend storing LiFePO4 batteries in a cool, dry place at temperatures between 0 C and 25 C (32 F and 77 F). Storing the battery outside of this temperature range can reduce its shelf life.



LITHIUM ION BATTERY STORAGE & MAINTENANCE CHARGING

Lithium Ion rechargeable batteries should be stored at 50% to 60% state-of-charge (SOC). The shelf life of a lithium ion cell/battery is a function of the self discharge, temperature, battery age and state-of-charge (SOC) conditions imposed upon the cell/battery



Which Brands Have the Longest Lasting AA Batteries?

Shelf Life and Age Impact The shelf life of AA batteries varies depending on the type of battery. Alkaline batteries have a shelf life of around five years, while lithium batteries can last up to 20 years. It's essential to check the expiration date before using the battery to

batteries

I am trying to determine the shelf life of a typical Li-Polymer battery. I have Googled but can't find any definitive view on the matter. There are two questions regarding the battery shown: 1. What is the likely useful shelf life of an unused (from factory) battery 2.



Comprehensive Understanding of Lithium-ion Battery Life Cycle

What Is The Lithium Battery Shelf Life That Is In Storage? When a lithium-ion battery is not in use and is stored properly, it will gradually lose some of its charge over time. This self-discharge process occurs due to the battery's internal reactions.



Battery Chemistries and the Storage Requirements

The shelf life for this nickel-based battery is 3-5 years. Lithium-Ion: Lithium-ion chemistries have slow self-discharge rates of 5% in 24 hours and 1-2% per month. They have a roughly 2-year shelf life. Lithium-Polymer: This type of lithium-based battery has a self

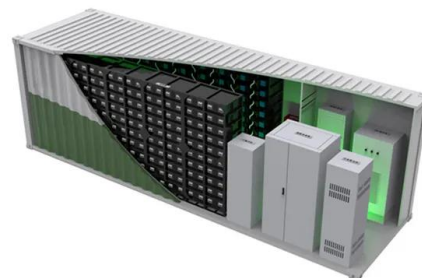


How Long is the Shelf Life of Lithium Batteries? Exploring the Lifespan

Lithium-Ion Batteries Shelf Life: Typically 2 to 3 years. Lithium-ion (Li-ion) batteries are the most common type used in consumer electronics, such as smartphones, tablets, and laptops, as well as in electric vehicles (EVs). Although Li-ion batteries offer high

Battery Shelf Life , Battery Knowledge , TRITEK

Lithium-ion battery shelf life: two to three years. Lead-acid battery shelf life: three to five years. NiCad battery shelf life: one to two years. Finally, it's important to remember that not all batteries are created equal. Some batteries have a shorter shelf life than So, if



[How to store lithium based batteries](#)

Lithium batteries should be kept at around 40-50% State of Charge (SoC) to be ready for immediate use - this is approximately 3.8 Volts per cell - while tests have suggested ...



Battery Terminology: Shelf Life

Lithium primary batteries, including lithium metal and lithium thionyl chloride (Li-SOCI₂) batteries, generally have a shelf life ranging from 10 to 20 years when stored properly. These batteries are known for their long-term ...



How Long Do Lithium Batteries Last in Storage?

Lithium batteries typically have a shelf life of 2-3 years, after which their capacity may start to degrade. Is it better to store lithium batteries fully charged or partially charged? It ...

How Long Do Rechargeable Batteries Last?

Disclosure This website is a participant in the Amazon Services LLC Associates Program, an affiliate advertising program designed to provide a means for us to earn fees by linking to Amazon and affiliated sites. Rechargeable batteries come in different types and chemistries, including lithium-ion, NiMH, and nickel-cadmium. Lithium-ion batteries are ...



How long can a lithium-ion battery sit unused? , Redway Battery

Understanding the typical shelf life of a lithium-ion battery is crucial for ensuring its longevity and optimal performance when needed. By considering factors such as quality, ...



Everything You Need To Know About The CR2032 Battery

Energizer claims that their lithium coin cell batteries have up to 10 years of shelf life when properly stored. As far as service life this will depend greatly on the application. A CR2032 battery in a car key fob may last up to 4-5 years before needing replacement as the ...

- LiFePO₄
- Wide temp: -20°C to 55°C
- Easy to expand
- Floor mount&wall mount
- Intelligent BMS
- Cycle Life:≥6000
- Warranty :10 years



What Is the Shelf Life of a Lithium-Ion Battery?

Lithium-ion batteries have a shelf life of 3-6 years. Loss of battery life, also known as self-discharge, occurs at a rate of between .5% to 2% per month. To minimize the loss of charge, store lithium-ion batteries in a cool, temperature-controlled place away from

Contact Us

For catalog requests, pricing, or partnerships, please visit:
<https://www.vdbconstruction.co.za>