

Lithium-ion battery charging best practices





Overview

So how do you make your lithium-ion battery last as long as possible?

You may have heard you n.

Something else lithium-ion batteries don't like are extreme temperatures. Whenever possible, you should avoid leaving phones and laptops in hot cars or in chilly rooms, because these te.

The rechargeable batteries in today's smartphones, tablets, laptops, and other devices all use a technology called lithium-ion. As you might expect, they contain. lithium ions. As Popular Science explained in our look at Tesla's Powerwall battery: When the battery is charging, positively-charged lithium ions move.

So how do you make your lithium-ion battery last as long as possible?

You may have heard you need to do a full charge and discharge when your device is right out of the box—but this doesn't really matter on modern batteries. What matters most is how you charge.

Something else lithium-ion batteries don't like are extreme temperatures. Whenever possible, you should avoid leaving phones and laptops in hot cars or in chilly rooms, because these temperature extremes won't do their batteries' lifespans any favors. You should.

Why should you use a specialized lithium battery charger?

For optimal performance and safety, it is recommended to use a specialized lithium battery charger. Adhering to voltage requirements, temperature considerations, and lithium battery charging profiles are essential for safe and efficient charging of lithium batteries.

Should a lithium ion battery be partially charged?

When considering daily procedures, partial charging is just fine for lithium-ion batteries and can benefit cell longevity. To understand why it's important to appreciate how a battery charges. Li-ion batteries draw constant current and



operate at a lower voltage when closer to empty.

What voltage should a lithium battery be charged?

Understanding the charging voltages for lithium batteries is crucial for maintaining battery health and performance. This includes knowing the appropriate voltages for the bulk, absorption, and float stages of charging. For lithium batteries, the recommended voltage range for battery charging is between 14.2 and 14.6 volts.

How should a lithium battery pack be charged?

It is recommended that lithium battery packs be charged at well-ventilated room temperature or according to the manufacturer's recommendations. Avoid exposing the battery to extreme temperatures when charging, as this can affect its performance and life.

Should you store lithium ion batteries at full charge?

Storing lithium-ion batteries at full charge for an extended period can increase stress and decrease capacity. It's recommended to store lithium-ion batteries at a 40-50% charge level. Research indicates that storing a battery at a 40% charge reduces the loss of capacity and the rate of aging.

What is lithium-ion battery charging?

Now that you have your preferred gadget take a seat, and let's explore the world of lithium-ion battery charging. Rechargeable power sources like lithium-ion batteries are quite popular because of their lightweight and high energy density. Lithium ions in these batteries travel back and forth between two electrodes when charged and discharged.



Lithium-ion battery charging best practices

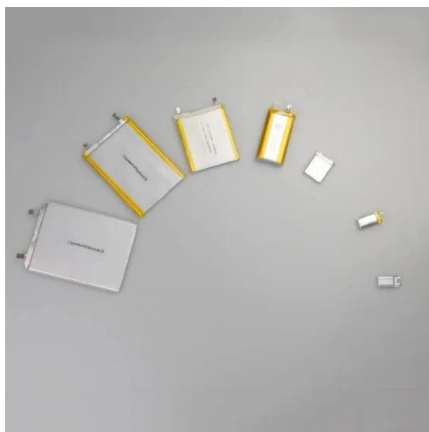


Easy Ways to Charge Lithium Ion Batteries: 9 Steps (with

Practice shallow discharges with your device. Lithium-ion batteries operate best when they are charged off and on throughout the day. Try to charge your device in bursts from approximately 40% up to approximately 80% at a time. Limit the number of times that you

Tesla Battery Best Practices: A Lithium-ion Deep Dive ...

As discussed in "Battery Best Practices", we recommend plugging your Tesla into a charger and setting the charge limit between 55 and 60% if you won't be using it for more than a few days. This has to do with ...



Charging Lithium Ion Batteries: A Complete Guide

With its extended lifespan and great energy density, the lithium-ion battery has completely changed how we power our electronics. This extensive tutorial will examine common misconceptions, best practices, and strategies to ...

Lithium-Ion Battery Charging Best Practices 101 , Bigblue

Learn some Lithium-ion battery charging best practices to extend your battery life. Bigblue Dive Lights uses the safest Lithium-ion batteries on the market. Skip to content (727) 442-2300



Lithium Batteries 101: Charging and Maintenance Tips

Optimal charging practices can markedly extend the service life and efficiency of lithium-ion batteries, including older batteries that are more susceptible to degradation. Use Manufacturer-Specified Settings: Always charge with the recommended voltage and current.

How to Properly Charge a Lithium-Ion Battery: A Comprehensive ...

This comprehensive guide will delve into the technical details and best practices for charging lithium-ion batteries effectively. Understanding Lithium-Ion Battery Charging Lithium-ion batteries have a straightforward charging process, with specific voltage and current limitations that are easier to manage compared to other battery chemistries.



Charging Lithium Batteries: The Basics , Battle Born Batteries

When purchasing from our company, charging lithium batteries becomes an everyday part of the routine, and we understand that there's a lot of information about our products. Whether it's about how the technology accepts a ...



Maximize battery life with these essential smartphone charging tips

Raising the temperature regularly above 40°C (104°F) and charging to 100% sees this fall to just 65% capacity after the first year, and a 60°C (140°F) battery temperature ...



[How to Charge a LiFePO4 Battery , LithiumHub](#)

If you need a quicker charge, opt for fast charging with a charger that outputs around 40-45% of the battery's total Ah, allowing the same 100Ah battery to charge in just over 2 hours. While fast charging is convenient, slow charging is generally preferred as it keeps the battery cooler and extends its life.

Charging Solutions: Best Practices for Lithium-Ion Electric Vehicle

Electric vehicles are a long-term investment, and proper care and maintenance of the battery are crucial for the overall value and lifespan of the vehicle. Implementing EV battery charging best practices can optimize performance, efficiency, and longevity. This section



How to Charge Lithium-Ion Batteries: Best Practices

Lithium-ion battery charging best practices such as monitoring temperature, avoiding overcharging & following manufacturers' recommendations can help protect batteries and maximize their performance and battery life.



The Complete Guide to Lithium Battery Charging

Charging Basics: Know Before You Go. Before installing your new lithium iron phosphate battery into your rig, it's important to understand the nuances of lithium battery charging systems. First and foremost, standard lead ...



Lithium-Ion Batteries: Charging Guide for Maximum Endurance

Lithium-ion batteries don't like extreme charge conditions. This is the most important piece of advice we can give you, and it's the basis for all that is to follow. Almost all modern

Charging Your Lithium-ion Batteries: Tips, Myths, and Best Practices

Lithium-ion batteries are the powerhouse of modern electronics. They are used in smartphones, laptops, electric vehicles, and many other devices that have become essential to our everyday lives. In this blog post, we will explore ...



Lithium-Ion Battery Care Guide: Summary Of Battery Best Practices

Charging algorithm = Battery is charged at Constant Current, then near full charge (typically over 80%) the charger switches to Constant Voltage. The charging rate slows ...



LA-365 Lithium-Ion Battery Best Practices

LA-365 Lithium-Ion Battery Best Practices Overview: Lithium-ion batteries have many beneficial qualities: An extensive shelf life, o Do not use, store, or charge lithium-ion batteries in areas of extreme temperatures. If possible, place charging docks or cords in



How to maximize battery life: Charging habits and other tips

QUICK ANSWER If you're in a hurry, here's a quick summary of the best battery life-maximizing tips you should keep in mind: Avoid full charge cycles (0-100%) and overnight charging. Instead, top

BEST PRACTICES FOR GETTING THE MOST OUT OF YOUR LITHIUM-ION BATTERIES ...

while lithium-ion batteries can be over-discharged, it is best to let the battery run to below 10 percent at least once a month before you recharge it. Battery recharging temperature limits vary slightly from device to device, and also how long they take to charge,



Best Practices for Charging Li-ion Batteries

Since these batteries have proven themselves and are here for the duration, we've compiled a list of best charging practices to maximize the performance of Li-ion (Lithium-ion) batteries. Use the charger provided by the device manufacturer or a compatible charger per their specifications.





Optimal Lithium Battery Charging: A Definitive Guide

The correct specification charger is critical for optimal performance and safety when charging Li-Ion battery packs. Your charger should match the voltage output and current rating of your specific battery type. ...



[Best Practices for Charging Li-ion Batteries](#)

How to Charge a Lithium-Ion Battery. Since these batteries have proven themselves and are here for the duration, we've compiled a list of best charging practices to maximize the performance of Li-ion (Lithium-ion) batteries.

Lithium Ion Battery

lithium-ion battery fires include: over charging or discharging, unbalanced cells, excessive current discharge, short circuits, physical damage, excessively hot storage and, for multiple cells in a pack, poor electrical connections. 4.1 Best Practices for lithium-ion



How to Charge Lithium-Ion Batteries: Best Practices

Lithium-ion battery charging best practices such as monitoring temperature, avoiding overcharging & following manufacturers' recommendations can help protect batteries and maximize their performance and battery life. Do you need a special lithium battery



Best Practices for Maintaining Lithium-Ion Battery Health

This article aims to provide guidelines on how to keep your lithium-ion battery healthy, ensuring optimal performance and longevity Best Practices for Maintaining Lithium-Ion Battery Health 2,611 Published by BSLBATT Sep 12,2023 Maintaining Lithium-Ion



How to Properly Charge a Lithium-Ion Battery: A Comprehensive ...

Lithium-ion batteries should be charged within the recommended temperature range, typically between 0°C and 45°C (32°F and 113°F). Charging outside this range can lead ...

Debunking Lithium-Ion Battery Charging Myths: Best ...

Navigate the maze of lithium-ion battery charging advice with "Debunking Lithium-Ion Battery Charging Myths: Best Practices for Longevity." This article demystifies common misconceptions and illuminates the path to maximizing your battery's ...



How Best to Charge Your Phone, Explained by an Expert

For optimized battery life, your phone should never go below 20 percent or above 80 percent. It may put your mind at ease when your smartphone's battery reads 100 percent charge, but it's actually not ideal for the battery. "A lithium-ion battery doesn't like to be

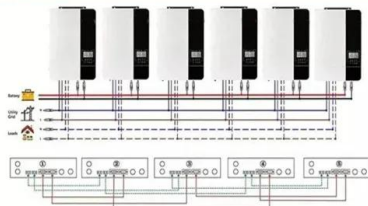


Safe Lithium Ion Battery Tips: What Every User Should Know

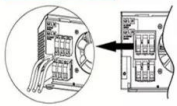
Part 4. Best practices for safe lithium-ion battery usage To ensure the safe use of lithium-ion batteries, follow these best practices: Use Certified Chargers: Always use chargers specifically designed for your battery type and certified by recognized testing laboratories.



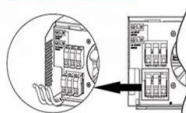
Parallel (Parallel operation up to 6 Unit (only with battery connected))



AC input wires



AC output wires

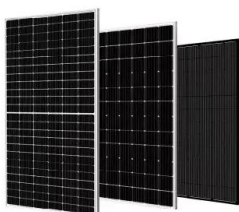


Optimal Charging Voltage for Lithium Batteries Guide

A 24V lithium-ion or LiFePO4 battery pack typically requires a charging voltage within the range of about 29-30 volts. Best Practices for Charging Lithium Batteries Charging lithium batteries demands adherence to best practices for optimal performance and

BU-808: How to Prolong Lithium-based Batteries

Table 4: Discharge cycles and capacity as a function of charge voltage limit Every 0.10V drop below 4.20V/cell doubles the cycle but holds less capacity. Raising the voltage above 4.20V/cell would shorten the life. The readings reflect regular Li-ion charging to 4.20V



EV battery charging best practices: how can you keep your battery

Similarly, charging your battery before you dip too much below 20% isn't just about peace of mind; it can also contribute to better battery health. Lithium-ion batteries perform less efficiently at low states of charge, and they perform better over the long term when



How to charge batteries so they last longer

The rechargeable batteries in phones, laptops, headphones, toothbrushes and game consoles will all wear out eventually. But they'll last longer if you follow these tips.

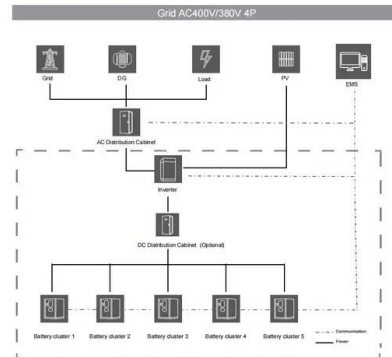


Charging Lithium Batteries: A Comprehensive Guide

Looking to charge your lithium batteries but not sure where to start? You've come to the right place! In this article, we'll explore the ins and outs of charging lithium batteries and provide you with a simple and straightforward solution. Whether you're new to the world

How Does Fast Charging Influence Battery Life?

2 ???· Lithium-Ion Basics: These batteries consist of an anode (often made from graphite), a cathode To maximize battery life while enjoying the benefits of fast charging, consider these best practices: Avoid Frequent Fast Charging: Use fast chargers sparingly for



Contact Us

For catalog requests, pricing, or partnerships, please visit:
<https://www.vdbconstruction.co.za>