

Lithium ion battery check





Overview

How do you test a lithium ion battery?

Here's how to do it: Fully charge the battery. Set your multimeter to measure DC voltage. Touch the positive and negative probes of the multimeter to the corresponding terminals on the battery. Read the voltage displayed on the multimeter. A healthy lithium-ion battery should read between 3.6-3.8 volts for 18650 cells.

How to test a lithium-ion battery with a multimeter?

When testing a lithium-ion battery with a multimeter, the voltage test is one of the most important tests to perform. This test will help you determine the voltage level of the battery, which can indicate whether the battery is fully charged or not. Here are the steps to conduct the voltage test:.

How do you know if a lithium ion battery is bad?

A healthy lithium-ion battery should read between 3.6-3.8 volts for 18650 cells. If the voltage drops quickly when discharged or spikes when charged, that's an indication that the battery may be damaged and needs to be replaced. Another way to test a lithium-ion battery is to perform a charge cycle test. Here's how to do it:.

Can you test a lithium polymer battery?

Yes, you can use the same method to test a lithium polymer battery. However, make sure to check the voltage range of your battery as it may differ from a lithium ion battery. 4.

How do I measure the current of a lithium ion battery?

To measure the current (in amps) of a lithium-ion battery, you need to set the multimeter to measure current (A). Connect the negative (-) lead of the multimeter to the negative (-) terminal of the battery and the positive (+) lead to the positive (+) terminal of the battery.



How do you test a LiFePO4 battery?

If you're wondering how to test the capacity of your Lifepo4 battery, there are a few different ways you can do it. One way is to use a multimeter to measure the voltage of the battery. Another way is to use a capacity tester, which will give you a more accurate reading of the battery's capacity.



Lithium ion battery check



How to Check Lithium Battery Health with a Multimeter

Learn how to check the health of a lithium battery with a multimeter. This guide covers initial voltage checks, investigating cell groups, assessing cell health, testing under load, and monitoring self-discharge.

[How do lithium-ion batteries work?](#)

How lithium-ion batteries work Like any other battery, a rechargeable lithium-ion battery is made of one or more power-generating compartments called cells. Each cell has essentially three components: a ...



Lithium-ion batteries guide , ACCC Product Safety

Lithium-ion batteries are the most common type of battery used in rechargeable devices. You'll find lithium-ion batteries in most laptops, mobile phones, e-bikes, e-scooters and power tools. Buy products with lithium-ion batteries from reputable suppliers and use as

A practical design of reliability and performance test for portable

and physical conditions that the Li-ion battery experiences changes for each application [3][4]. In order to study the degradation process of Li-ion batteries, performance tests are carefully chosen and applied to the experimental study



[7]. Three types of testing



How To Test A Lithium Ion Battery With A Multimeter?

Steps for testing the current of Li-ion battery
Checking for voltage is easier and simple when you have a digital multimeter. Using the meter, you can test for the battery supplies enough Ampere of current to its load. 1. After disconnecting the battery from its load

Transport of Lithium Metal and Lithium Ion Batteries

IATA Lithium Battery Guidance Document - 2024
OSS/Cargo Page 4 01/01/2024 to Table 9.3.A. In addition, packages containing UN 3090, lithium metal batteries prepared in accordance with Section IA or Section IB of PI968 or UN 3480, lithium ion batteries



A critical review of lithium-ion battery safety testing and

The safety of lithium-ion batteries (LiBs) is a major challenge in the development of large-scale applications of batteries in electric vehicles and energy storage systems. With the non-stop growing improvement of LiBs in energy density and power capability, battery safety has become even more significant.



All You Need to Know About Li-ion Batteries

Li-ion batteries have a voltage and capacity rating. The nominal voltage rating for all lithium cells will be 3.6V, so you need higher voltage specification you have to combine two or more cells in series to attain it Unless some Tony Stark steps in and invents the Arc



How to Test Lithium-Ion 18650 Cells and Battery Health

How to Test Lithium-Ion Cells Battery Health Testing Process Posted: Wed Mar 30 2022 / Last updated: Thu Feb 29 2024 You are here: Home / Blog / Battery Storage / How to Test Lithium-Ion Cells Battery Health Testing Process Table of Contents A Quick

Lithium Ion Battery Testing and Certification

Lithium Ion Battery Testing Lithium ion battery testing involves a series of procedures and tests conducted to evaluate the performance, safety, and lifespan of lithium ion batteries. Lithium ion batteries are widely used in a variety of applications, including and



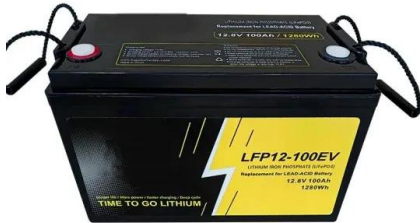
How to Test Lithium Batteries: A User-Friendly Guide

There are a few signs that can tell you if your lithium ion battery is bad. Here are some of the most common ones: 1. Reduced Capacity. If your battery is not holding a charge as long as it used ...



How to Tell If a Lithium-ion Battery is Bad?

As lithium-ion battery technology has advanced, the likelihood of mishaps has significantly lessened. However, it's still crucial to recognize the signs of a faulty battery. Key indicators include diminished battery life, lower voltage levels, rapid self-discharge, excessive heat, and physical swelling. These symptoms are vital to identify for safe and efficient battery use.



How To Test Lithium Ion Battery?

Testing a lithium-ion battery involves checking its voltage, capacity, and overall health, ensuring it's safe and efficient for use. This process is simple yet vital for maintaining the reliability and longevity of these powerful energy sources. What are lithium ion are a

How To Test Lithium Ion Battery?

Testing a lithium-ion battery involves checking its voltage, capacity, and overall health, ensuring it's safe and efficient for use. This process is simple yet vital for maintaining the reliability and longevity of these powerful energy sources.



Lithium Batteries 101: Charging and Maintenance Tips

Lithium-ion batteries represent a significant advancement in energy storage technology, offering high energy density and longevity. Proper charging and maintenance are paramount to harnessing their full potential and ensuring safety. This authoritative guide provides essential insights into the effective care of lithium



batteries

I need to check a lithium ion battery with about 1700mAh capacity. What do you recommend to me to measure this kind of battery capacity in a reasonable time like 3-4 hours. A 1700 mAh battery would be discharged in 3 hours by $1700/3 \approx 570$ mA and in 4



[How Lithium-ion Batteries Work](#)

Lithium-ion batteries are incredibly popular these days. You can find them in laptops, PDAs, cell phones and iPods. They're so common because, pound for pound, they're some of the most energetic rechargeable batteries available. Lithium-ion batteries have

[BU-907: Testing Lithium-based Batteries](#)

Re-used Li-Ion batteries. I got a number of laptop batteries which I disassembled. The cells are rated at 2500mAh. Each cell I charged individually and then discharged to get its remaining capacity. The cells were ...



- LiFePO₄
- Wide temp: -20°C to 55°C
- Easy to expand
- Floor mount&wall mount
- Intelligent BMS
- Cycle Life:≥6000
- Warranty :10 years



[How to read battery cycling curves](#)

[3] Annual Conference of the Prognostics and Health Management Society, 2009 Modeling Li-Ion Battery Capacity Depletion in a Particle Filtering Framework Bhaskar Saha¹ and Kai Goebel². HPC high precision coulometry coulombic efficiency life time battery charge battery discharge parasitic reactions CCCV CC-CV



Lithium-ion Battery Internal Resistance Testing

When your goal is to test battery cells' internal resistance, it's important to be able to measure low resistance levels accurately. (The larger a battery cell, the lower its internal resistance. Battery cells used in vehicles typically have an internal resistance less



[A Guide to Lithium-Ion Battery Safety](#)

Recognize that safety is never absolute. Holistic approach through "four pillars" concept. Safety maxim: "Do everything possible to eliminate a safety event, and then assume it will happen". ...

Battery Cell, Module, and Pack Cyclers Test Equipment

Battery Cyclers and Simulation. Precision charge/discharge, simulators, and electrical safety test equipment for lithium ion battery and ESS. IEC60601-1 is mainly intended for product development where safety considerations must be taken into account early in the



[Guide] How to Check a Lithium Battery with a Multimeter

1 ??· Look for a "V" symbol with a straight line on your multimeter's dial. Adjust the range slightly higher than the battery's nominal voltage. For example, set it to 10V if you're testing a 3.7V battery. Connect the probes: Place the red probe ...



Can You Test a Lithium Battery with a Battery Tester?

Yes, you can test a lithium battery with a battery tester, but it is essential to use a tester specifically designed for lithium batteries. Standard testers may not provide accurate readings for lithium-ion or LiFePO4 batteries due to their unique voltage characteristics and charging profiles. Understanding Lithium Battery Testing Types of Battery Testers When ...

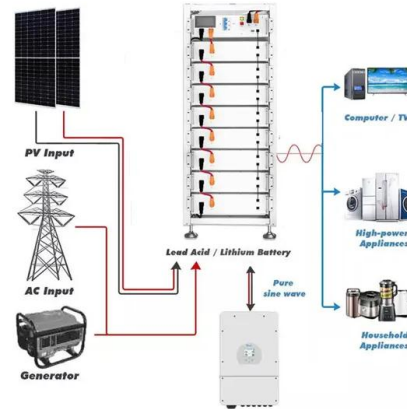


How to check laptop battery health in Windows 10 or 11

The lithium-ion batteries in most of our electronics wear down and become less effective over time, but in order to check just how much of your battery capacity is gone you need to dig a little

Battery Safety Testing and Certification , UL

We evaluate, test and certify virtually every type of battery available -- including lithium-ion battery cells and packs, chargers and adapters -- to UL Standards as well as key international, national and regional regulations including: UL 1642 Lithium Cell UL 2054



Lithium-based batteries, history, current status, challenges

Early Li-ion batteries consisted of either Li-metal or Li-alloy anode (negative) electrodes. 73, 74 However, these batteries suffered from significant capacity loss resulting from the reaction between the Li-metal and the liquid organic solvent electrolyte, poor cycle



How to Test Lithium-Ion Battery Health

Read the voltage output on the multimeter. A healthy lithium-ion battery should read a voltage close to the manufacturer's specification. Record the results and repeat the test periodically. If ...

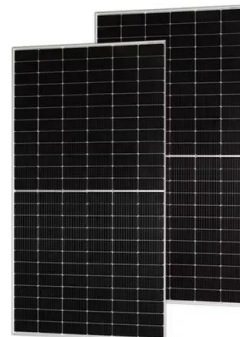


Is There a Way to Test a Lithium Battery? (Lithium-Ion Battery ...

If you're using a device that runs on a lithium-ion battery, it's important to know how to tell if the battery is going bad. A bad battery can cause a variety of problems, from reduced performance to overheating and even ...

batteries

I need to check a lithium ion battery with about 1700mAh capacity. What do you recommend to me to measure this kind of battery capacity in a reasonable time like 3-4 hours. A 1700 mAh battery would be discharged ...



Lithium Battery Temperature Ranges: A Complete Overview

Optimal Temperature Range Lithium batteries work best between 15 C to 35 C (59 F to 95 F). This range ensures peak performance and longer battery life. Battery performance drops below 15 C (59 F) due to slower chemical reactions. Overheating can occur above





How to Test Lithium Battery

4 ternal pressure test: The internal voltage test of lithium battery is: (UL standard) The simulated battery is at an altitude of 15240m above sea level (low pressure 11.6kPa) to check whether the battery leaks or bulges. Specific steps:
Charge the battery 1C with



Contact Us

For catalog requests, pricing, or partnerships, please visit:
<https://www.vdbconstruction.co.za>