

# Lithium manganese dioxide battery charging





## Overview

---

- Easy determination of state of charge of Li/MnO<sub>2</sub> primary cells. ••.

With theoretical and practical gravimetric energy density up to 855 Wh/kg and 300 Wh/kg, respectively, Li/MnO<sub>2</sub> batteries are among the most popular power source systems covering.

Li/MnO<sub>2</sub> coin cells (CR 2025) rated about 160 mAh from two different manufacturers A and B are used in this study. Firstly, four of each one of A and B cells are discharged under C/24 rate (.

3.1. Discharge capacity Fig. 1 shows discharge profiles of cells A and B under C/24 rate. Discharge capacity of cell A and cell B at 1.5 V cut-off voltage is ~130 and ~120.

Thermodynamics data including OCV,  $\Delta S$  and  $\Delta H$  have been measured on Li/MnO<sub>2</sub> 'CR' cells from two different manufacturers. The data show monotonous increase of OCV,  $\Delta S$  and  $\Delta$ .

A lithium ion manganese oxide battery (LMO) is a that uses manganese dioxide, , as the material. They function through the same /de-intercalation mechanism as other commercialized technologies, such as . Cathodes based on manganese-oxide components are earth-abundant, inexpensive, non-toxic, and provide better thermal stability.

Are lithium manganese oxides a promising cathode for lithium-ion batteries?

His current research focuses on the design and fabrication of advanced electrode materials for rechargeable batteries, supercapacitors, and electrocatalysis. Abstract Lithium manganese oxides are considered as promising cathodes for lithium-ion batteries due to their low cost and available resources.

What is a lithium manganese dioxide battery?

Chemistry and Design: Lithium manganese dioxide batteries, also known as lithium-manganese or LiMnO<sub>2</sub> cells, utilize lithium as the anode and manganese dioxide as the cathode. This configuration provides a stable and



safe chemistry, leading to batteries that are typically used in single-use, non-rechargeable applications.

Can manganese be used in lithium-ion batteries?

In the past several decades, the research communities have witnessed the explosive development of lithium-ion batteries, largely based on the diverse landmark cathode materials, among which the application of manganese has been intensively considered due to the economic rationale and impressive properties.

What is a lithium ion manganese oxide battery (LMO)?

A lithium ion manganese oxide battery (LMO) is a lithium-ion cell that uses manganese dioxide,  $MnO_2$ , as the cathode material. They function through the same intercalation /de-intercalation mechanism as other commercialized secondary battery technologies, such as  $LiCoO_2$ .

What is a coin type lithium manganese dioxide rechargeable battery?

The coin type lithium manganese dioxide rechargeable battery is a UL recognized component. (Technician Replaceable) Recognized models: ML2032, ML2016H Certification number: MH12568 Dimensions and weight are for the battery itself, but may vary depending on terminal specifications and other factors. Data and dimensions are not guaranteed.

What is a secondary battery based on manganese oxide?

They function through the same intercalation /de-intercalation mechanism as other commercialized secondary battery technologies, such as  $LiCoO_2$ . Cathodes based on manganese-oxide components are earth-abundant, inexpensive, non-toxic, and provide better thermal stability.



## Lithium manganese dioxide battery charging

---



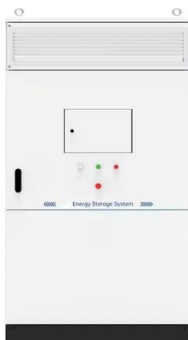
### Manganese makes cheaper, more powerful lithium battery

An international team of researchers has made a manganese-based lithium-ion battery, which performs as well as conventional, costlier cobalt-nickel batteries in the lab. They've published their

### Understanding the Differences: Lithium Manganese Dioxide ...

While lithium manganese dioxide and lithium-ion batteries share the common element of lithium, their differences in chemistry, performance, applications, and safety features set them apart.

...



### The design of fast charging strategy for lithium-ion batteries and

Lithium-ion batteries (LIBs) are essential components in the electric vehicle (EV) industry, providing the primary power source for these vehicles. The speed at which LIBs can be ...

### Photo-accelerated fast charging of lithium-ion batteries

Here the authors show that illumination of a lithium manganese oxide cathode can induce efficient charge-separation and electron transfer processes, thus giving rise to a ...



### Coin Type Lithium Manganese Dioxide Rechargeable ...

The coin type lithium manganese dioxide rechargeable battery is a small, lightweight rechargeable battery. This battery employs specially treated manganese dioxide for the positive material and a lithium-aluminum compound ...



### Reviving the lithium-manganese-based layered oxide

Lithium-ion batteries (LIBs) are the pivotal electrical power component of electric vehicles (EVs) Synthesis and structural characterization of a novel layered lithium manganese oxide,  $Li_{0.36}Mn_{0.91}O_2$ , and its lithiated derivative,  $Li_{1.09}Mn_{0.91}O_2$ . Solid,



- Efficient Higher Revenue**
  - Max. Efficiency 97.5%
  - Max. PV Input Voltage 650V
  - 100% Peak Output Power
  - 2 MPP Trackers, 100% DC Input Utilization
  - Max. PV Input Current 15A, Compatible with High Power Modules
- Intelligent Simple O&M**
  - IP66 Protection Degree: support outdoor installation
  - Smart I-V Curve Diagnosis Function: locate PV array faults accurately and automatically detect faults
  - DC & AC Type II SPD: prevent lightning damage
  - Battery Reverse Connection Protection
- Flexible Abundant Configuration**
  - Plug & Play, UPS Switching under 20ms
  - Compatible with Lead-acid and Lithium Batteries
  - Max. Current Inverter Shutdown
  - ARC Function (Optional): when an arc fault is detected the inverter immediately stops operation

### Lithium Manganese Oxide Battery

However, Lithium Manganese oxide batteries are not rechargeable, therefore, these are not ideal for laptops, cellphones and other equipment that needs reliable batteries. Charging may cause adverse effect so diodes are used to ensure that if in case the the



### Lithium-based batteries, history, current status, challenges

Typical examples include lithium-copper oxide (Li-CuO), lithium-sulfur dioxide (Li-SO<sub>2</sub>), lithium-manganese oxide (Li-MnO<sub>2</sub>) and lithium poly-carbon mono-fluoride (Li-CF<sub>x</sub>) batteries. 63-65 And since their inception these primary batteries have occupied the



### Exploring The Role of Manganese in Lithium-Ion Battery Technology

Lithium manganese oxide (LMO) batteries are a type of battery that uses MnO<sub>2</sub> as a cathode material and show diverse crystallographic structures such as tunnel, layered, and 3D framework, commonly used in power tools, medical devices, and powertrains.

### Lithium Manganese Dioxide Rechargeable Battery

LITHIUM MANGANESE DIOXIDE RECHARGEABLE BATTERY 2 22.07 ~ Never set the charge voltage above 3.3V. Charging at a higher voltage could cause the generation of gas, internal short-circuiting, or other malfunctions, leading to distortion,



### Lithium Manganese Oxide

Lithium batteries are generally categorized into five chemistries: lithium-cobalt oxide, lithium-titanate, lithium-iron phosphate, lithium-nickel manganese cobalt oxide, and lithium-manganese oxide. For stationary power backup and grid-tied services, lithium-nickel manganese cobalt oxide (Li-NMC) is often preferred due to its long life and inherent safety by being less prone to ...



## A Simple Comparison of Six Lithium-Ion Battery Types

Six lithium-ion battery types are compared to one another with respect to specific energy, specific power, performance, lifespan, Lithium Manganese Oxide has moderate specific power, moderate specific energy, and a moderate level of safety when compared



### 12V 24V 36V 48V and 72V Lithium Battery Chargers

When choosing a lithium charger look for one that is the same voltage as your battery (12V for 12V batteries, 36V for 36V batteries, etc.) and decide how fast you want to charge your battery. The higher the amp rating (A) of the charger, the faster your battery will charge\*.

### LITHIUM MANGANESE DIOXIDE RECHARGEABLE BATTERY

The coin type lithium manganese dioxide rechargeable battery is a 3V battery using specially treated manganese dioxide for the positive material, a lithium-aluminum compound for the negative material and a specially formulated organic electrolyte solution.

### Lithium Solar Generator: \$150



### (Li/MnO LITHIUM MANGANESE DIOXIDE BATTERY

The coin type lithium manganese dioxide battery (CR battery) is a small, lightweight battery with an operating voltage of 3V and the ability to operate over a wide temperature range. It has a wide range of applications, both for powering devices such as wristwatches and electronic



### How do the six most common Li primary chemistries compare?

This article looks at the performance tradeoffs and typical applications for the six most common Li primary chemistries including LiCFX (lithium poly carbon monofluoride) LiMnO2 (lithium manganese dioxide), LiFeS2 (lithium iron disulfate), LiSO2 (lithium sulfur dioxide), LiSOCl2 (lithium thionyl chloride) bobbin and spiral designs, and lithium metal oxide (LMO).



### Lithium metal battery

CR2032 lithium button cell battery Lithium 9 volt, AA, and AAA sizes. The top object is a battery of three lithium-manganese dioxide cells; the bottom two are lithium-iron disulfide cells and are compatible with 1.5-volt alkaline cells. Lithium metal batteries are primary batteries that have metallic lithium as an anode..

### [BU-205: Types of Lithium-ion](#)

Lithium Manganese Oxide:  $\text{LiMn}_2\text{O}_4$  cathode. graphite anode Short form: LMO or Li-manganese (spinel structure) Since 1996 Voltages 3.70V (3.80V) nominal; typical operating range 3.0-4.2V/cell Specific energy (capacity) 100-150Wh/kg Charge (C-rate) 0.7-1C



### [Lithium/Manganese Dioxide Battery CR 1620](#)

Lithium/Manganese Dioxide Battery CR 1620 2 Li/MnO Key Features Industry Highest Cell Capacity & High Energy Maximum Abnormal Charge Current 4 mA Nominal Energy 240 mWh Physical characteristics Typical weight 1.3 g (0.046 oz.) Li metal





## The design of fast charging strategy for lithium-ion batteries and

Lithium-ion batteries (LIBs) are essential components in the electric vehicle (EV) industry, providing the primary power source for these vehicles. The speed at which LIBs can be charged plays a crucial role in determining the charging efficiency and longevity of EVs.



### [Progress, Challenge, and Prospect of LiMnO<sub>2</sub>](#)

Lithium manganese oxides are considered as promising cathodes for lithium-ion batteries due to their low cost and available resources. Layered LiMnO<sub>2</sub> with orthorhombic or monoclinic structure has attracted tremendous interest thanks ...

### [Lithium-Manganese Dioxide \(Li-MnO<sub>2</sub>\) Batteries](#)

Lithium-Manganese Dioxide (Li-MnO<sub>2</sub>) batteries, also known as lithium primary batteries, are non-rechargeable, disposable batteries. They operate based on the electrochemical reaction between lithium as the anode (negative electrode) and manganese dioxide as the cathode (positive electrode), separated by an electrolyte.



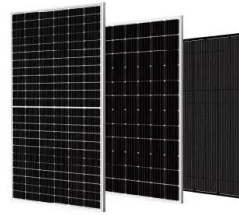
### [Lithium ion manganese oxide battery](#)

A lithium ion manganese oxide battery (LMO) is a lithium-ion cell that uses manganese dioxide, MnO<sub>2</sub>, as the cathode material. They function through the same intercalation/de-intercalation mechanism as other commercialized secondary battery technologies, such as LiCoO<sub>2</sub>. Cathodes based on manganese-oxide components are earth-abundant, inexpensive, non-toxic, and provide better thermal stability.



## Optimal Lithium Battery Charging: A Definitive Guide

Charging a lithium battery pack may seem straightforward initially, but it's all in the details. Within this category, there are variants such as lithium iron phosphate (LiFePO4), lithium nickel manganese cobalt oxide (NMC), and lithium cobalt oxide (LCO), each



## Manganese-Based Materials for Rechargeable Batteries beyond ...

The newly emerging rechargeable batteries beyond lithium-ion, including aqueous and nonaqueous Na-/K-/Zn-/Mg-/Ca-/Al-ion batteries, are rapidly developing toward ...

## Lithium-based batteries, history, current status, challenges

Typical examples include lithium-copper oxide (Li-CuO), lithium-sulfur dioxide (Li-SO<sub>2</sub>), lithium-manganese oxide (Li-MnO<sub>2</sub>) and lithium poly-carbon mono-fluoride (Li-CF ...



## Photo-accelerated fast charging of lithium-ion batteries

Here the authors show that illumination of a lithium manganese oxide cathode can induce efficient charge-separation and electron transfer processes, thus giving rise to a new type of fast lithium



### Accurate state of charge assessment of lithium-manganese dioxide

About 80% of all lithium primary cells in the market uses the manganese oxide cathode [5]. These batteries present a practical energy density per total cell mass of up to 300 Wh·kg<sup>-1</sup> [5]. This

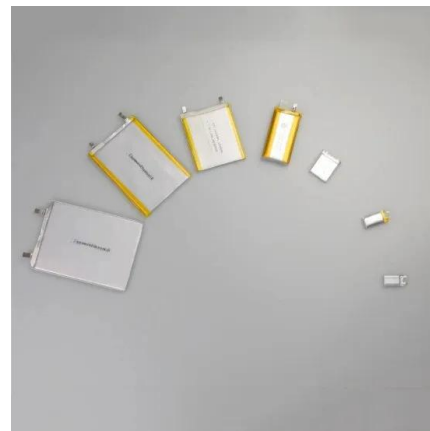


### Lithium Manganese (Li/MnO LITHIUM MANGANESE DIOXIDE BATTERY

LITHIUM MANGANESE DIOXIDE BATTERY 2 22.07 This is a primary battery and cannot be charged. If used in memory or RTC back-up applications, be sure to use diodes to prevent charging from the main power source or other batteries, and a protective resistor

### Coin Type Lithium Manganese Dioxide Batteries (CR)

The coin type lithium manganese dioxide battery (CR battery) is a small, lightweight battery with an operating voltage of 3 V and the ability to operate over a wide temperature range. It has a wide range of applications for powering ...



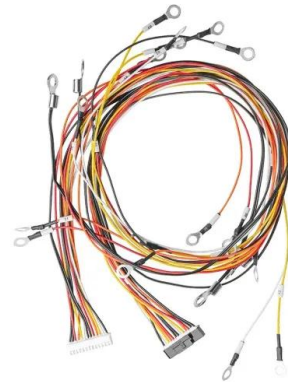
### Reviving the lithium-manganese-based layered oxide

Summary. In the past several decades, the research communities have witnessed the explosive development of lithium-ion batteries, largely based on the diverse landmark ...



### A rechargeable aqueous manganese-ion battery based on

authors report a novel aqueous battery system when manganese ions are shuttled between an Mn the high charge density of Al 3+ and the oxide layer on Al anode often result in unsatisfactory



### Structural insights into the formation and voltage

One major challenge in the field of lithium-ion batteries is to understand the degradation mechanism of high-energy lithium- and manganese-rich layered cathode materials.

### Lithium/Manganese Dioxide Battery

DL123A Lithium/Manganese Dioxide Battery This data is subject to change. Performance information is typical. Contact Duracell for the latest information. Excellent resistance to corrosion Designed to meet all major quality, safety and environment



## Contact Us

---

For catalog requests, pricing, or partnerships, please visit:  
<https://www.vdbconstruction.co.za>