

# Low light photovoltaic panels series and parallel connection



 **TAX FREE**    

**Product Model**  
HJ-ESS-215A(100KW/215KWh)  
HJ-ESS-115A(50KW 115KWh)

**Dimensions**  
1600\*1280\*2200mm  
1600\*1200\*2000mm

**Rated Battery Capacity**  
215KWH/115KWH

**Battery Cooling Method**  
Air Cooled/Liquid Cooled

**ENERGY STORAGE SYSTEM**





## Overview

---

If you're using more than one solar panel, connecting each PV module together and to a portable power station or other balance of system is essential. Solar panels on their own are useless. It's when you connect a PV module to a solar inverter or charge controller to convert or store electricity that the magic happens.

In most modern solar panel arrays, the physical act of wiring multiple solar panels together is as simple as plugging in a cable. But, before you do so, there's one essential decision to.

If you've already purchased your solar panel array and balance of system and you'd like to install them yourself, here are seven basic steps that apply to most residential photovoltaic systems. The instructions should be.

Connecting solar panels in series or parallel has its pros and cons. Can you have the best of both worlds?

Yes, many large solar panel installations combine series and parallel wiring.



## Low light photovoltaic panels series and parallel connection



### Should you put your solar panels in series or parallel?

If there's no risk of your solar panels being obstructed, you can increase the system's output with a series connection. The high voltage will usually result in a higher ...

### Connecting Solar Panels in Series or in Parallel?

Yes, many large solar panel installations combine series and parallel wiring in one array to maximize the product of each group of panels. It's possible to strike the optimal ...

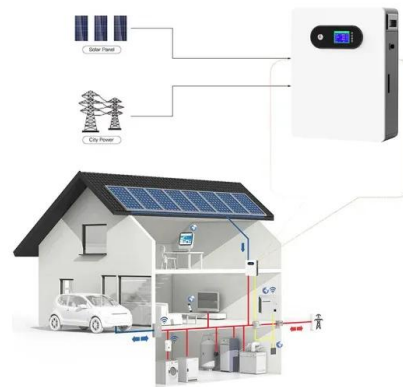


### Photovoltaic Panels Parallel vs. Series Connection

Parallel connection of photovoltaic panels involves connecting all their cables on the principle of pluses and minuses with minuses. Thanks to this, the voltage in the entire ...

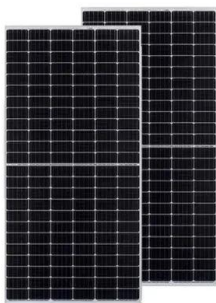
### Should Solar Panels Be Connected In Series or Parallel?

Series vs. Parallel Connections: A Comparison.  
Series Connections: How It Works: In a series connection, solar panels are connected end-to-end, with the positive ...



### Guide to Solar Panel Parallel vs Series Wiring

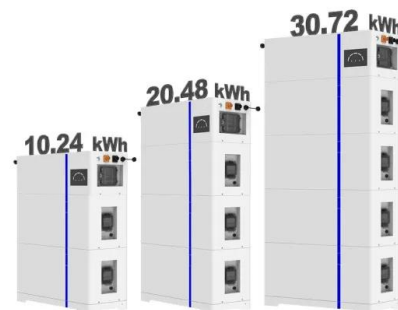
Electrical current, voltage, and power in solar panel systems 101. Whether your solar panels are connected in series or in parallel, there are three fundamental concepts to ...



### Connecting Solar Panels in Series or in Parallel?

Yes, many large solar panel installations combine series and parallel wiring in one array to maximise the product of each group of panels. It's possible to strike the optimal ...

### ESS



### Solar String Expansion. Panels Connection Parallel vs ...

Wiring Solar Panels in Parallel. In parallel wiring, you wire all negative poles of all panels to the same line. Respectively, all positive poles to another line. Then, you connect each line to the respective connectors of the ...





### Solar Panel Series vs. Parallel: Choosing Configuration

Discover the difference between solar panel series vs parallel configurations. Learn how to choose the right setup for optimal power output and charging. Series ...



### Understanding the series and parallel connection of ...

Solar panels connected in series are ideal in applications with low-amperage and high voltage and power requirements. The total power of solar panels connected in series is the summation of the maximum power of the ...

### Series and parallel connection of photovoltaic modules. (a) Series

Download scientific diagram , Series and parallel connection of photovoltaic modules. (a) Series connection. (b) Parallel connection. from publication: Generation control circuit for photovoltaic



### Solar Panels: Series or Parallel Connection - Which is Best?

Oppositely, parallel wiring combines currents for more overall current, maintaining the voltage. It's ideal for not going over your inverter's voltage limits, especially ...



### Confused about series vs Parallel is shade and low light

So are you are guessing that 100 watt panels put out 4 volts in low light? You can test out your theory of series vs parallel connection when you get panels but . . . . .

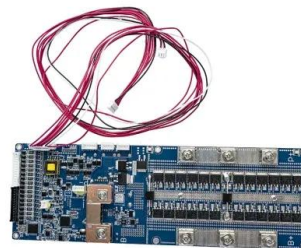


### The Difference Between Wiring Solar Panels in Series ...

Let's take a closer look at how this works and how to wire panels in series and parallel. Series Solar Panel Wiring If you have a small low-voltage system for an RV or boat that might be in variable lighting conditions, ...

### Solar Panel Wiring Basics: Complete Guide & Tips to Wire a PV ...

Key concepts and items required for solar panel wiring Solar Panel String. The "solar panel string" is the most basic and important concept in solar panel wiring. This is simply ...



### FLEXIBLE SETTING OF MULTIPLE WORKING MODES



### Should Solar Panels Be Connected In Series or Parallel?

Understanding the differences between series and parallel connections is essential for optimizing your solar power system's performance. The choice between these ...



## Mixing solar panels - Dos and Don'ts

The basics of connecting different photovoltaic panels in series or parallel. Wiring solar photovoltaic panels in series. As we said above, when connecting solar panels in series, we get an increased wattage in combination with a ...



## Solar Panel Wiring Guide

Delve into the intricacies of selecting, installing, and optimizing solar panel performance. Learn about wiring installations, series, parallel series-parallel, string fusing, blocking diodes, efficiency, and much more. Equip yourself with ...

## How To Connect Solar Panels in Parallel and Series?

Parallel Connections: Increasing Current Concept.  
Parallel Connection: Solar panels are connected with all positive terminals linked together and all negative terminals ...



## Solar Panels In Series or Parallel? , Eco Affect

In a series connection, solar panels are linked one after another - a bit like a chain. parallel solar panel connections involve linking all the positive terminals together and ...



### Series vs. Parallel

A series-parallel connection is accomplished by using both a series and a parallel connection. Every time you group panels together in series, whether is 2, 4, 10, 100, etc. this is called a ...



### Understanding the series and parallel connection of ...

Engineers also connect solar panels in a series-parallel configuration. Several panels are first wired together in series to form strings of panels (for instance, three strings of solar panels featuring two panels ...

### How to Wire Solar Panels in Series-Parallel Configuration?

The following solar panel and battery wiring diagram shows how to wire a four 12V Solar Panels in series-parallel connection to a 24V, 400Ah battery with an automatic inverter system. Note ...



### How Series Vs Parallel Wired Solar Panels Affects Amps & Volts

Solar Array Volts & Amps Wiring Diagrams: This diagram shows two, 5 amp, 20 volt panels wired in series. Since series wired solar panels get their voltages added while their amps stay the ...



### Choosing Between Series and Parallel Connections for ...

Whether you use series or parallel wiring changes how your solar panel works. Series connections can lower power output if one panel gets shaded. However, parallel connections are less affected by shading, keeping ...

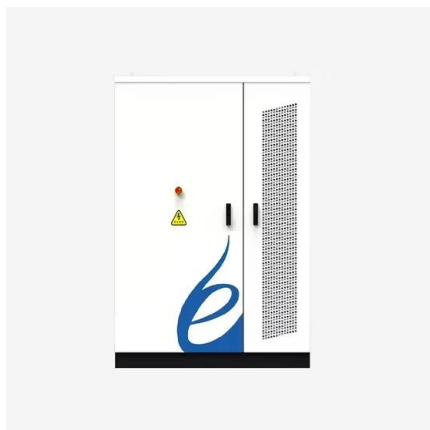


### How to Wire Solar Panels in Series & Parallel

Wiring solar panels in series sums the voltages, but the current remains the same. Wiring solar panels in parallel sums the currents, but the voltage remains the same. ...

### Guide to Solar Panel Parallel vs Series Wiring

Solar panel parallel vs series connection: what's the difference? The major practical difference between wiring identical solar panels in series or in parallel is what happens to the output current and voltage in each case:



### What's the Difference Between Connecting Solar Panels in Parallel ...

The failure of one panel does not significantly affect the series-parallel solar panel. While connecting solar panels in parallel, charging the system and individual panels is ...



### Solar Panel Series vs Parallel: What's the Difference?

Low Light Conditions: A series configuration can be beneficial in low-light conditions because it can reach the required voltage to charge batteries even when individual ...



### Connecting Solar Panels in Series or in Parallel: Which ...

This article will examine the pros and cons of series and parallel connections between solar panels of the same rated power and model. Mixing and matching PV modules with different specs or manufacturers is possible ...

### Shading Solar Panels Series or Parallel , Clever Solar ...

Wiring panels in series is cheaper and is better for your MPPT charge controller. Most MPPT charge controllers can take a maximum of 100 Volts. If you exceed this, you need a hybrid solar panel setup (series and ...



### [Series vs Parallel Solar Panel Wiring Basics](#)

Using the same example of wiring together six 200W solar panels, wiring them in parallel would give you 25 volts and 60 amps (since each panel's 10 amps are added ...



## Everything You Need To Know About Solar Panel ...

Connecting Solar Panels in Parallel Wiring solar panels in parallel means connecting the positive terminal of one panel to the positive terminal of another, and then the negative terminals together as well. These connections are made ...



## Contact Us

---

For catalog requests, pricing, or partnerships, please visit:  
<https://www.vdbconstruction.co.za>