

# Maple flats solar energy center





## Overview

---

Who owns the Maple Flats Solar Energy Center?

WEC Energy Group owns 80% of the Maple Flats Solar Energy Center. The project is being developed by Invenergy, a leading global developer and operator of sustainable energy solutions. WEC Energy Group (NYSE: WEC) announced today that the company has agreed to acquire an 80% ownership interest in the Maple Flats Solar Energy Center, located in Clay County, Illinois.

Does WEC Energy own Maple Flats Solar Energy Center?

WEC Energy (NYSE: WEC) said Monday it agreed to acquire an 80% ownership interest in the Maple Flats Solar Energy Center in Illinois for ~\$360M, in the company's first solar investment.

What is Maple Flats solar farm?

Clay County State's Attorney Andrew Koester reported that the Illinois Department of Commerce and Economic Opportunity has approved a venture between the County and Invenergy to be known as Maple Flats Solar Farm. The project involves leased land in Louisville, Harter and Oskaloosa Townships where solar panels would be placed.

What is Maple Hill solar?

Located on previously cleared timber property, the 100-MWac Maple Hill Solar facility will power more than 18,000 homes, avoid over 100,000 tons of CO<sub>2</sub> per year by displacing older, less efficient generation, and add to the clean energy mix in the Commonwealth.

How many solar panels will WEC Energy install in 2024?

The commercial operation of the site is expected in early 2024, which will host 800,000 solar panels across 1,500 acres. WEC Energy expects to sell renewable energy from the project under a long-term power purchase



agreement with a Fortune 100 company.



## Maple flats solar energy center

---



### WEC Energy Group to acquire 80% ownership of Maple Flats ...

The Maple Flats Solar Energy Center is a 250-megawatt project. The site will host 800,000 solar panels across 1,500 acres. Commercial operation is expected in early 2024. ...

### WEC Energy Group, Inc. to Acquire 80% Ownership of Maple Flats Solar

WEC Energy Group, Inc. announced that the company has agreed to acquire an 80% ownership interest in the Maple Flats Solar Energy Center. Located in Clay County, Illinois, the project is being 19a759ebee70c.LMVGLgbmc V\_3kzOkhBZID8i5-XZpmE80pzOag7TiHaU.bfYifVa rBw6myn\_WsnEpRY-NjCEH0gxt7ULM ...



### WEC Energy Group to pay \$360 million for stake in ...

WEC Energy Group will become the majority owner of a large Illinois solar farm that will provide energy for a single Fortune 100 company. The 250-megawatt Maple Flats Energy Center is being built

### 49166 Federal Register /Vol. 89, No. 113/Tuesday, June 11

Applicants: Maple Flats Solar Energy Center LLC, WEC Infrastructure LLC. Description: Joint Application for Authorization Under Section 203 of the Federal Power Act of Maple Flats Solar



Energy Center LLC, et al. Filed Date: 5/23/24.  
Accession Number: 5 p.m



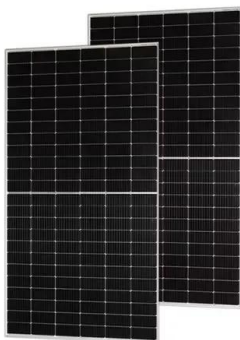
### **WEC Energy Group to acquire 80% ownership of Maple Flats ...**

MILWAUKEE, Oct. 31, 2022 /PRNewswire/ -- WEC Energy Group (NYSE: WEC) today announced that the company has agreed to acquire an 80% ownership interest in the Maple ...



### **WEC Energy to buy 80% stake in Maple Flats Solar in \$360M deal**

WEC Energy (NYSE:WEC) said Monday it agreed to acquire an 80% ownership interest in the Maple Flats Solar Energy Center in Illinois for ~\$360M, in the company's first solar investment.



### [Q1 2024 WEC Energy Group Inc Earnings Call](#)

And we plan to increase our ownership in the Maple Flats Solar Energy Center from 80% to 90%. Just as a reminder, Maple Flats is under development in South Central Illinois.



### WEC Energy makes first solar investment, acquiring piece of Maple Flats

WEC Energy Group agreed to acquire an 80% ownership interest in the Maple Flats Solar Energy Center located in Clay County, Ill. The center is a 250-megawatt project developed by Invenergy. The site will host 800,000 solar panels across 1,500 acres. Commercial operation is expected in early 2024. The project will generate renewable energy that ... WEC ...



### WEC Energy Group to acquire 80% ownership of Maple Flats Solar Energy

The Maple Flats Solar Energy Center is a 250-megawatt project. The site will host 800,000 solar panels across 1,500 acres. Commercial operation is expected in early 2024. The project will generate renewable energy that will be sold under a long-term power

### WEC Energy Group to take 80% stake in Maple Flats Solar Energy Center

WEC Energy Group has agreed to acquire an 80 percent ownership interest in the Maple Flats Solar Energy Center in Illinois for about \$360 million. The 250-megawatt Maple Flats Solar Energy Center project is being developed by Invenergy -- a global developer and operator of sustainable energy solutions -- and represents the first solar investment in WEC Energy Group's ...



### [MAPLE FLATS SOLAR ENERGY CENTER LLC](#)

MAPLE FLATS SOLAR ENERGY CENTER LLC is a Delaware Limited-Liability Company filed on April 4, 2018. The company's File Number is listed as 6830767 . The Registered Agent on file for this company is The Corporation Trust Company and is located at Corporation Trust Center 1209 Orange St, Wilmington, DE 19801.



### **WEC Energy Group to Acquire 80% Stake in Maple Flats Solar Energy**

-- WEC Energy Group said Monday it has agreed to acquire an 80% stake in the 250-megawatt Maple Flats Solar Energy Center in Illinois for about \$360 million. The Maple Flats Solar Energy Center, a WEC Energy Group, Inc. is a holding company organized



### **WEC Energy Group to acquire stake in solar facility in Illinois**

WEC Energy Group, a US-based energy company, has agreed to pay about \$360 million for an 80 per cent stake in the Maple Flats Solar Energy Centre. Located in Clay County, Illinois, the 250 MW energy centre is being developed by ...



### **Public-Private Solar Farm Project Approved for Clay County**

Clay County board members Tuesday learned that a public-private solar farm project for the county has gained approval. Clay County State's Attorney Andrew Koester reported that the Illinois Department of Commerce and Economic Opportunity has approved a venture between the County and Invenergy to be known as Maple Flats Solar Farm.





**Clay County Board will hear about solar energy project**

LOUISVILLE -- Clay County Board members have a presentation scheduled Tuesday evening on the Invenergy-Maple Flats Solar Project. Kimberly Fryer of Invenergy is on the May 9 county board meeting agenda to offer remarks. The Board meets at 6 p.m. on

**WEC Energy Group Acquires Maple Flats Solar Energy Center**

Maple Flats Solar Energy Center is a 250-megawatt project that hosts 800,000 solar panels across 1,500 acres. Maple Flats Solar Energy Center is based in Clay County, Illinois. Search 199,482 Deals Now



**Maple Flats Solar Energy Center LLC; Supplemental Notice That ...**

This is a supplemental notice in the above-referenced proceeding of Maple Flats Solar Energy Center LLC's application for market-based rate authority, with an accompanying rate tariff, noting that such application includes a request for blanket authorization, under 18 CFR part 34, of future issuances of securities and assumptions of liability.



**WEC Energy says \$360M investment in solar farm eligible for tax ...**

The Maple Flats Solar Energy Center is a 250-megawatt project. The site will generate renewable energy that will be sold under a long-term power purchase agreement with an undisclosed Fortune 100





### WEC Energy to buy majority stake in 250-MW solar park in Texas

WEC's purchase, which is pending regulatory clearance, comes on the heels of another deal with Invenergy from October 2022 for an 80% stake in 250-MW Maple Flats Solar Energy Center in Illinois. The group noted it also has existing or planned investments in eight wind farms with a combined capacity of close to 2 GW.

### Invenergy projects

Since 2001, Invenergy has developed more than 200 projects, completed or in progress, for communities and customers domestically and around the world. Invenergy is helping states and countries bring clean energy solutions to life for their citizens.



### WEC Energy Group, Inc. agreed to acquire Maple Flats Solar Energy

WEC Energy Group, Inc. (NYSE:WEC) agreed to acquire Maple Flats Solar Energy Center of Invenergy for approximately \$360 million on October 31, 2022. The Maple Flats investment is expected to be eligible for Production Tax Credits as outlined in the Inflation

### MAPLE FLATS SOLAR ENERGY CENTER LLC

MAPLE FLATS SOLAR ENERGY CENTER LLC (LEI# 5493002W2TTILENCAK06) is a legal entity registered with BUSINESS ENTITY DATA B.V.. The address is One South Wacker Drive, Suite 1800, Chicago, US-IL, 60606, US.





### WEC Energy to acquire 80% stake in Maple Flats ...

WEC Energy Group has agreed to acquire a stake of 80% in the 250MW Maple Flats Solar Energy Center in Illinois, US from Invenergy for around \$360m. The solar power project, which is being developed by Invenergy in ...

### WEC Energy To Buy 80% Of Maple Flats Solar Energy For ...

(RTTNews) - WEC Energy Group (WEC), an electricity and natural gas provider, said on Monday that it has agreed to acquire an 80 percent ownership in the Maple ...



### WEC Energy Group

WEC Energy Group (NYSE: WEC) today (Oct 31) announced that the company has agreed to acquire an 80% ownership interest in the Maple Flats Solar Energy Center. Located in Clay County, Illinois, th. . .

### WEC Energy Group to acquire 80% ownership of Maple Flats Solar Energy

WEC Energy Group (NYSE: WEC) today announced that the company has agreed to acquire an 80% ownership interest in the Maple Flats Solar Energy Center. Located in Clay County, Illinois, the project is being developed by Invenergy -- a leading global





[MAPLE FLATS SOLAR ENERGY CENTER LLC](#)

Free and open company data on Illinois (US) company MAPLE FLATS SOLAR ENERGY CENTER LLC (company number LLC\_06599664), ONE SOUTH WACKER DRIVE SUITE 1800, CHICAGO, IL, 60606 Changes to our website -- to find out why access to some data now requires a login, click here



**WEC Energy buys 80% stake in Illinois solar , News , IJGlobal**

WEC Energy Group has agreed to buy an 80% stake in Maple Flats Solar Energy Center in Clay County, Illinois, from Invenergy for around \$360 million Thank you for printing this article from IJGlobal. As the leading online publication serving the infrastructure



[Maple Flats Solar Energy Center](#)

Maple Flats Solar Energy Center is a 250-megawatt project that hosts 800,000 solar panels across 1,500 acres. Maple Flats Solar Energy Center is based in Clay County, Illinois. Company Summary

**Clay County Board Discusses Solar Energy Project**

Clay County board members discussed a renewable energy project this week. Representatives of Renewable Development with Invenergy were on hand at Tuesday's meeting. Invenergy is hoping to bring the Maple Flats Solar Energy Center project to the county. The





### **Mccarthy Building Companies, Inc Vs. Maple Flats Solar Energy Center ...**

Overview in the case of Mccarthy Building Companies, Inc Vs. Maple Flats Solar Energy Center LI number 2023LA8 in Clay County, IL. Date Type Description October 18, 2023 Docket Event Appearance October 17, 2023 Docket Event Summons (Returned) October



### **WEC Energy Group to acquire 80% ownership of Maple Flats ...**

WEC Energy Group (NYSE: WEC) today announced that the company has agreed to acquire an 80% ownership interest in the Maple Flats Solar Energy Center. Located ...



### **65876 Federal Register /Vol. 89, No. 156/Tuesday, August 13**

Applicants: Maple Flats Solar Energy Center LLC, Walnut Bend Solar LLC, Boomtown Solar Energy LLC, Calhoun Solar Energy LLC, Fairbanks Solar Holdings LLC, Fairbanks Solar Energy Center LLC, Black Oak Wind, LLC, Gratiot County Wind II LLC, Gratiot

## **Contact Us**

For catalog requests, pricing, or partnerships, please visit:  
<https://www.vdbconstruction.co.za>