

# **Metal gear solid phantom pain pc how to invert mouse**





## Overview

---

Does Metal Gear Solid V 'The Phantom Pain' work on PC?

With extensive knowledge of the Fox Engine, and dozens of hours of hands-on time with both titles, we've run the numbers, compared the settings, and demonstrated why Metal Gear Solid V: The Phantom Pain looks and plays best on PC in our latest Graphics & Performance Guide.

How do I contact Metal Gear Solid V The Phantom Pain?

As a last resort, head to the Metal Gear Solid V The Phantom Pain's official website and click 'Support' or 'Contact'. Send them an email, jump into live chat, or post in their official forums. Share what's happening and any error messages. Remember to double-check you're on the official site.

Is the Phantom Pain a single player game?

Metal Gear Solid V: The Phantom Pain is a singleplayerfirst-person and third-personstealth game developed by Kojima Productions and published by Konami. It is part of the Metal Gear series and chronologically takes place after the events of Metal Gear Solid V: Ground Zeroes and before Metal Gear. The game was released on September 1, 2015.

Where can I find the Phantom Pain game guide & walkthrough?

Metal Gear Solid V: The Phantom Pain Game Guide & Walkthrough is also available in our Mobile App.

Why does Metal Gear Online crash on startup?

Edit fov.cfg with your desired horizontal FOV. Causes Metal Gear Online to crash on Startup. By default, enabling Adaptive V-Sync in the driver control panel will disable V-Sync entirely on a 60 Hz display. Unlocking the framerate will fix this. Go to the configuration file location. Open TPP\_GRAPHICS\_CONFIG in the text editor of your choosing.



## Metal gear solid phantom pain pc how to invert mouse

---



### mouse?

For Metal Gear Solid V: The Phantom Pain on the PlayStation 4, a GameFAQs message board topic titled "mouse?". It gives you a small amount of GMP and Heroism, plus it counts toward your animal collection (if you want the corresponding trophy you have to

### Metal Gear Solid 5 Keyboard and Mouse controls are terrible

What the fuck are you talking about? It does show K+M controls. It does not come with inverse aim by default, nor do what you are saying. Its one of the best 3rd person controls out there (in pc, dunno about consoles), its intuitive and simple. You change weapons



### Rebind Keyboard controls to "any key" guide :: METAL GEAR SOLID ...

As you know Konami did a bad job on the keyboard & mouse controls. This guide will help people that use the Arrow keys, Keypad, and the cluster of keys above the arrows to be able to bind actions to these buttons. 1. you will need to download an install

### [METAL GEAR SOLID V: THE PHANTOM PAIN](#)

METAL GEAR SOLID V: THE PHANTOM PAIN > General Discussions > Topic Details. So I do not do well with inverted controls at all. I have been searching for a way to change the controls ...



### [Resolved] Playing with keyboard and mouse? :: METAL GEAR SOLID ...

I've only ever seen videos and reviews of people using controllers. Is the game comfortable to play with using a keyboard and mouse? Can keys be rebinded? Am I missing out on anything by using a keyboard? Edit: thank you everyone, was on the fence about buying the game because I was unsure of using M& K, definitely buying now!

### [Metal Gear Solid V: The Phantom Pain/Controls](#)

PC Action C Change Stance R Reload / Carry (hold) Space Quick Dive / Switch Weapons (while aiming Metal Gear Solid V: The Phantom Pain Table of Contents Gameplay ...

### Applications



### Mouse inverted how to turn it right? :: METAL GEAR SOLID V: ...

Showing 1 - 5 of 5 comments. Per page: 15 30 50. METAL GEAR SOLID V: THE PHANTOM PAIN > General Discussions > Topic Details. When i push the mouse up he looks ...



### controller prompts on popups :: METAL GEAR SOLID V: THE PHANTOM PAIN

Some people got keyboard and mouse prompts. I can only guess that they did not have any controller drivers installed. So METAL GEAR SOLID V: THE PHANTOM PAIN > General Discussions > Topic Details Date Posted: Sep 1, 2015 @ 12:13am Posts: 34



### Is there a way to change the controls so they are not

For Metal Gear Solid V: The Phantom Pain on the PlayStation 4, a GameFAQs message board topic titled "Is there a way to change the controls so they are not inverted in PS4 version". Hey all I checked the controls settings in the menu, but maybe I missed

### [configuration] Metal Gear Solid V: mouse aim and Analogue

I've just made a config for Metal Gear Solid V that actually has both Mouse Aim and Analogue Movement. I'm not sure how to share configs here, but it's on Steam Community configs, labeled as "Mouse look + Analogue Move - BASIC" by Yakuza Girl (same



### Camera keeps moving / panning by itself :: METAL GEAR SOLID ...

I'm sure I'm not the only one with this issue, but my problem is basically said in the title. During the brief amount of time that I played, the camera keeps moving itself up and to the left. I only have my keyboard and mouse plugged in, I have never used any other controller on this PC. Anyone have a solution to this, or anyone else experiencing this?



### Is the camera inverted?

For Metal Gear Solid V: The Phantom Pain on the PlayStation 4, a GameFAQs message board topic titled "Is the camera inverted?". nyquist75 posted It really bugs me when the controls are locked to inverted. Can I play this game where up = up, left = left, and

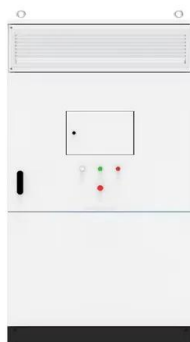
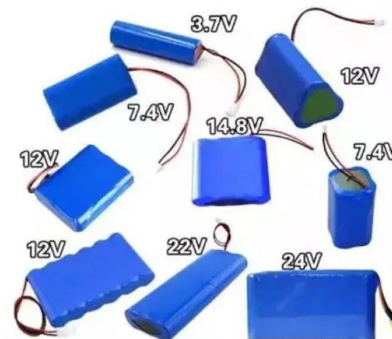


### How do I detonate a C4 :: METAL GEAR SOLID V: THE PHANTOM PAIN ...

METAL GEAR SOLID V: THE PHANTOM PAIN > General Discussions > Topic Details Jetzone Sep 2, 2015 @ 12:08am How do I detonate a C4 Title ^^ I'm lost Showing 1-7 of 7 comments Mentok the Mindtaker Sep 2, 2015 @ 12:11am place it, and then

### How do you aim down sights using keyboard and mouse? :: METAL GEAR

METAL GEAR SOLID V: THE PHANTOM PAIN All Discussions Screenshots Artwork Broadcasts Videos News Guides Reviews See, I'm using mouse vulgaris on my PC. It sux, but it's cheap and when it breaks I just buy another, again cheap. #5 dantrr :



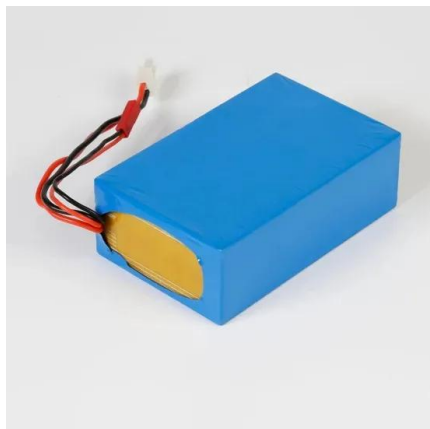
### PC set up only shows controller :: METAL GEAR SOLID V: THE PHANTOM PAIN

Besides, there are other controllers which have analog sticks and axes, too. I've got a mouse and sideboard with more keys than this game has bindings available, the bigger problem is the bindings that aren't allowed to be changed. But at least it's only janky in



**Inverted mouse :: METAL GEAR SOLID V: THE PHANTOM ...**

Showing 1 - 9 of 9 comments. Per page: 15 30 50. METAL GEAR SOLID V: THE PHANTOM PAIN > General Discussions > Topic Details. My mouse seems to be inverted by default, don't know how to change it.



**Keyboard/Mouse Support? :: METAL GEAR SOLID V: THE PHANTOM PAIN ...**

Just bought this game today. Started it and discovered what appears to be no support for a mouse and keyboard. Someone please tell me that I'm wrong and that I just don't know how to do it. In the settings, all I see is support for a controller, which I don't have and absolutely hate. If this is true, I'll be returning the game and getting my money back. Also, is ...

**How do i change the game to use Keyboard+Mouse. :: METAL GEAR SOLID ...**

METAL GEAR SOLID V: THE PHANTOM PAIN All Discussions Screenshots Artwork Broadcasts Videos News Guides Reviews Mouse invert, etc, is also in the options somewhere, but I don't have the game open and forget exactly where; probably something



[METAL GEAR SOLID V: THE PHANTOM PAIN](#)

METAL GEAR SOLID V: THE PHANTOM PAIN > General Discussions > Topic Details This topic has been locked Chenni Dec 31, 2016 @ 8:49pm Taking Cover Hey how do you take "cover" on this game. It only says Esc to take cover, but I only have the pause



### How to access the support items via PC Keyboard? :: METAL GEAR SOLID ...

METAL GEAR SOLID V: THE PHANTOM PAIN All Discussions Screenshots Artwork Broadcasts Videos News Guides Reviews Use your mouse to select your item, and press spacebar to select it for quick use. You can also quickscroll through all your #7

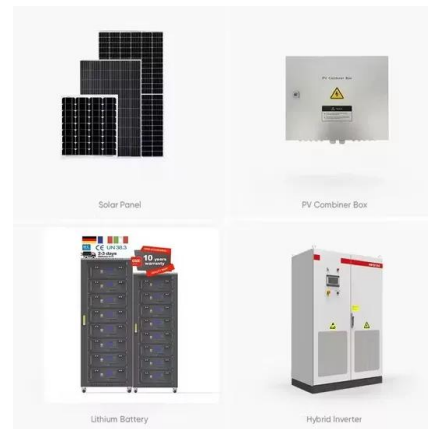


### Inverted Y axis

For Metal Gear Solid V: The Phantom Pain on the PlayStation 4, a GameFAQs message board topic titled "Inverted Y axis". I need help ive always used inverted Y axis, but it seems that tracking objects diagnally is better using the default setting. Is it worth it for

### [Metal Gear Solid V: The Phantom Pain](#)

Metal Gear Solid V: The Phantom Pain is a singleplayer first-person and third-person stealth game developed by Kojima Productions and published by Konami. It is part of the Metal Gear ...



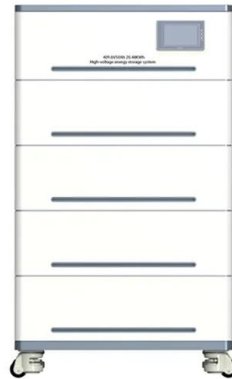
### MGSV Phantom Pain PC

Bought this game on steam, i PREFER playing with mouse and keyboard, but notice a lot of the time the auto prompts that come up are still showing the PS4 controls. Also, when I'm on the ...



### Keyboard and Mouse vs. Controller :: METAL GEAR SOLID V: THE PHANTOM

Which one should I use for The Phantom Pain? I played through Ground Zeroes with my keyboard and mouse, but I feel like it would have been a better experience overall with the controller. Should I take the time to acquaint myself with my controller for this game, or should I stick to the keyboard and mouse? I play games like The Witcher 2 and Dark Souls 1/2 with the ...



### METAL GEAR SOLID V: THE PHANTOM PAIN

Hi all, I am still in the tutorial and need to throw someone using CQC. I can grab them by left clicking near them but its telling me to use the left thumb stick along with my left mouse button to throw someone. However, I use keyboard and mouse not a combination of both so how do I throw someone. I tried the left mouse button plus directional buttons but that ...

### No mouse cursor? :: METAL GEAR SOLID V: THE PHANTOM PAIN ...

Hello, just got the game today, and ofc wanted to try it out, but when i open the game and gets to the menu, there is no mouse cursor to navigate on the screen? and also when creating an avatar theres no mouse navigation? Is this normal? since I can't navigate when create that character? xD or is the keyboard the only tool of navigation so far? just think its wierd when ...



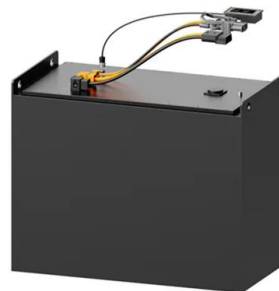
### how to interrogate? :: METAL GEAR SOLID V: THE PHANTOM PAIN ...

While sneaking up on someone from behind a prompt will come up to hold the right trigger (I'm using a controller obviously) then you just follow the on screen prompts to make him talk. You need a language interprator. Then, go and chokehold an enemy. Pressing



### keyboard and mouse prompts :: METAL GEAR SOLID V: THE PHANTOM PAIN

If you have ever plugged in a controller to your PC, it has installed a driver. Uninstall the controller driver, then play the game. METAL GEAR SOLID V: THE PHANTOM PAIN > General Discussions > Topic Details Date Posted: Sep 11, 2018 @ 7:29pm Posts:



### [METAL GEAR SOLID V: THE PHANTOM PAIN](#)

When I play this game, my mouse is inverted and I have no idea where to make it normal. I looked in settings and found nothing to help me. Can someone please help? I want to play Metal Gear and be able to play it normally. Help!

### Mouse Is Going the Wrong Direction - Here's How to Invert

If you're using a Windows PC and would like to invert your mouse scrolling direction, the instructions are slightly more complicated. Find a step-by-step guide in the next section.





## Contact Us

---

For catalog requests, pricing, or partnerships, please visit:  
<https://www.vdbconstruction.co.za>