

Milky way galaxy and our solar system





Overview

In the epic poem *Enuma Elish*, the Milky Way is created from the severed tail of the primeval salt water *Tiamat*, set in the sky by *Anu*, the Babylonian god, after slaying her. This story was once thought to be the origin of the Milky Way.

The Milky Way is visible as a hazy band of white light, some 30° wide, arching across the sky. Although all the individual naked-eye stars in the entire sky are part of the Milky Way Galaxy, the term "Milky Way" is limited to this band of light.

The Milky Way is the galaxy that includes the Solar System, with the name describing the galaxy's appearance from Earth: a hazy band of light seen in the night sky formed from stars that cannot be individually distinguished by the naked eye. The Milky Way is a barred spiral galaxy with a D25 isophotal diameter.

In the epic poem *Enuma Elish*, the Milky Way is created from the severed tail of the primeval salt water *Tiamat*, set in the sky by *Anu*, the Babylonian god, after slaying her. This story was once thought to be the origin of the Milky Way.

The Sun's location and neighborhoodThe Sun is near the inner rim of the disk, within the Orion Arm of the Milky Way, between the Scutum-Centaurus and Split linear structures (formerly the Orion Arm). Based upon studies of stellar orbits around Sgr A* by Gillessen.

The Milky Way contains between 100 and 400 billion stars and at least that many planets. An exact figure would depend on counting the number of very-low-mass stars, which are difficult to detect, especially at distances of more than 300 ly (90 pc) from the Sun. As of 2015, about 100 exoplanets have been discovered.

The Milky Way is visible as a hazy band of white light, some 30° wide, arching across the sky. Although all the individual naked-eye stars in the entire sky are part of the Milky Way Galaxy, the term "Milky Way" is limited to this band of light.

Ancient, naked eye observationsIn *Timaeus*, (384–322 BC) states that the Pythagoreans (c. 500–428 BC) and Democritus (460–370 BC) proposed that the Milky Way is the glow of stars not directly visible due to their distance.

SizeThe Milky Way is one of the two largest galaxies in the Local Group (the other being the Andromeda Galaxy), although the size for its spiral arms is smaller.

The Milky Way consists of a bar-shaped core region surrounded by a warped



disk of and stars. The mass distribution within the Milky.



Milky way galaxy and our solar system

[News & Resources , Night Sky Network](#)



Many people are not clear about the difference between our Solar System, our Milky Way Galaxy, and the Universe. Let's look at the basics. Our Solar System consists of our ...

Milky Way Galaxy

It takes 250 million years for our Sun and the solar system to go all the way around the center of the Milky Way. Read a NASA Blueshift blog post about how many stars there are in the Milky Way We can only take pictures of ...



The Solar System's Place In The Milky Way: Part 1

A discussion of the position, orientation and orbit of the Solar System within the Milky Way galaxy: Part 1 Click to enlarge (with local arms labelled)Base map: NASA / JPL-Caltech / R. Hurt (SSC-Caltech) When I wrote recently about the pole stars of other planets, I was aware of one thing my sky maps didn't show---the rotation poles of our galaxy.



Where we fit in; our Sun, Solar System and Galaxy.

Our Galaxy Beyond our solar system is the rest of the galaxy. I always describe it as like a city made up of billions of solar systems (villages)



like our own. Our Galaxy is called the Milky Way and we live about two thirds of the way out towards the edge.



[What is the Milky Way? It's our home galaxy](#)

Where is the sun in our galaxy? Our solar system lies about 2/3 of the way out from the galactic center. Bottom line: Learn about our galaxy, the Milky Way. We discuss the origin of the name

Galaxies

Our home galaxy is called the Milky Way. It's a spiral galaxy with a disk of stars spanning more than 100,000 light-years. Earth is located along one of the galaxy's spiral arms, about halfway from the center. Our solar system takes ...



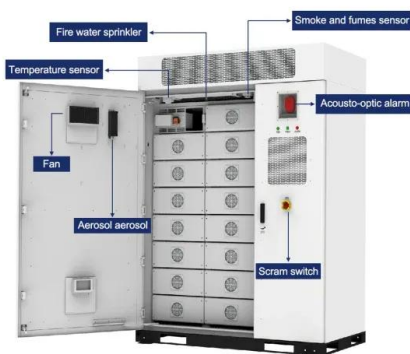
The Milky Way: Earth's home galaxy , Astronomy

Giant clouds of gas and dust sprinkled with splashy star clusters adorn the Milky Way's spiral arms, while the galaxy's vast halo teems with darker matter. Scientists think our galaxy has four



The Milky Way Galaxy

Using infrared images from NASA's Spitzer Space Telescope, scientists have discovered that the Milky Way's elegant spiral structure is dominated by just two arms wrapping off the ends of a central bar of stars. ...



The Milky Way is 1.2 zettameters

If the Milky Way was the size of a football field, our solar system would be the size of a dime! The Milky Way compared to other galaxies: While the Milky Way is massive, it's actually only average-sized compared to other galaxies in the universe.

What Is a Galaxy? , NASA Space Place - NASA Science for Kids

But where is our solar system? It's a small part of the Milky Way Galaxy. A galaxy is a huge collection of gas, dust, and billions of stars and their solar systems. A galaxy is held together by gravity. Our galaxy, the Milky Way, also has a supermassive black hole



Where is Earth in the Milky Way?

Much the same is true about our Solar System's position within the Milky Way. In truth, we've only been aware of the fact that we are part of a much larger disk of stars that orbits a common



Solar System Exploration

Our solar system is in one of the Milky Way galaxy's spiral arms called the Orion Spur. 5. A Long Way Around. Our solar system takes about 230 million years to orbit the galactic center. 6. Spiraling Through Space. The Milky Way is a ...



Is it true that our solar system belongs to another galaxy

It turns out that our solar system appears to belong to another galaxy that is colliding with the Milky Way. This was recently discovered when scientists were trying to figure sources for "dark matter" that would account for forces we can measure but not see visibly.

The Milky Way Facts , Size, Information, History & Definition

The Milky Way galaxy is an immense, flat, disk-shaped collection of gas, dust, and stars that spreads around 100.000 light-years across and is several thousand light-years thick. Key Facts & Summary There are at least 100 billion galaxies in the universe, and the



Differences Between the Solar System, Galaxies & the Universe

The Milky Way is a barred spiral galaxy that includes our Solar System. It's part of the Local Group, a galaxy cluster that also contains the Andromeda Galaxy . The Milky Way's size spans about 100,000 light-years in diameter, and at its core lies a ...



How did scientists determine our location within the Milky Way galaxy

How did scientists determine our location within the Milky Way galaxy--in other words, how do we know that our solar system is in the arm of a spiral galaxy, far from the galaxy's center?
Laurence



TAX FREE

ENERGY STORAGE SYSTEM

Product Model
HJ-ESS-215A(100KW/215KWh)
HJ-ESS-115A(50KW 115KWh)

Dimensions
1600*1280*2200mm
1600*1200*2000mm

Rated Battery Capacity
215KWH/115KWH

Battery Cooling Method
Air Cooled/Liquid Cooled



Galaxy, Universe & Solar System , Overview & Differences

A galaxy is a huge collection of gas, dust, and billions of stars and their solar systems, all held together by gravity. Our sun is just one of at least 200 billion stars in the Milky Way galaxy

Milky Way Galaxy , Size, Definition, & Facts , Britannica

Many people are not clear about the difference between our Solar System, our Milky Way Galaxy, and the Universe. Let's look at the basics. Our Solar System consists of our star, the Sun, and its orbiting planets (including ...



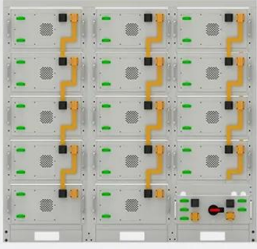
Milky Way Galaxy: 200 Billion Stars and Our Solar System

The Milky Way galaxy Earth is located in the Milky Way galaxy, which has an estimated 200 billion stars. Our sun is one of these many stars and it includes our solar system as well. Within our vast Milky Way galaxy, the Sun's gravitational pull governs the motion



In Depth , Sun - NASA Solar System Exploration

The Sun orbits the center of the Milky Way, bringing with it the planets, asteroids, comets, and other objects in our solar system. Our solar system is moving with an average velocity of 450,000 miles per hour (720,000 kilometers per hour). But even at this speed, it

Battery String-S224

- 1C Charge/Discharge
- Easy configuration and maintenance
- Power supply can be single battery string or parallel battery strings

Milky Way Galaxy

Our Sun (a star) and all the planets around it are part of a galaxy known as the Milky Way Galaxy. A galaxy is a large group of stars, gas, and dust bound together by gravity. They come in a variety of shapes and sizes. The ...

In Depth , Our Solar System - NASA Solar System Exploration

The planetary system we call home is located in an outer spiral arm of the Milky Way galaxy. Our solar system consists of our star, the Sun, and everything bound to it by gravity - the planets ...



[Where is Earth in the Milky Way Galaxy?](#)

Our solar system also orbits around the Milky Way's center, moving at about 230 kilometers per second. This journey takes a while--one full orbit, or "galactic year," lasts between 225-250 million years .





Where Are We In The Milky Way , Milky Way Facts

How many Solar Systems are in the Milky Way? Well, there is only one Solar System in our galaxy, as only ours is officially called so. But astronomers have found more than 3,200 other stars with planets orbiting them in the Milky Way. How many As seen the

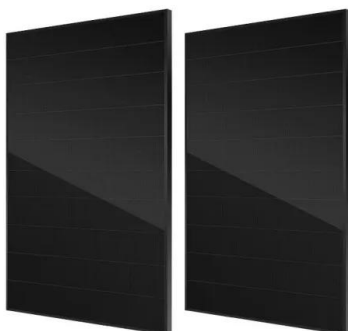


1.3: Our Galaxy

This is much like what astronomers think the Milky Way Galaxy would look like if we could view it from outside, which, of course, we cannot do from our vantage point within the Galaxy. Nonetheless, we will assume that this is a picture of our own Galaxy and then use this model to try to understand the size scale of the Milky Way.

15.1 The Milky Way Galaxy , Beyond the solar system

Just as the Earth travels around the Sun, the Sun and our entire solar system is traveling around the centre of the Milky Way Galaxy at a speed of 250 km/s. Even though we are travelling incredibly fast, it takes the Sun about 225 million years ...



What is the Milky Way?

In addition to the 100 billion to 400 billion stars in our galaxy, a similar number of planets likely exist in the Milky Way -- some of them part of solar systems and some floating freely.



Solar system , Definition, Planets, Diagram, Videos, & Facts

4 ???· solar system, assemblage consisting of the Sun--an average star in the Milky Way Galaxy--and those bodies orbiting around it: 8 (formerly 9) planets with more than 210 known planetary satellites (moons); many asteroids, some with their own satellites; comets and other icy bodies; and vast reaches of highly tenuous gas and dust known as the interplanetary medium.



The Location of the Solar System in the Milky Way Galaxy

Obviously our solar system lies very close to the galaxy's equator. Figure 1. Polar view of the Milky Way Galaxy showing the location of the Solar System. As to our distance from the center of the galaxy, the best guess is that we are 26,000 to 28,000 light

[Science 101: The Solar System](#)

Transcript (English) - [Narrator] Our solar system is one of over 500 known solar systems in the entire Milky Way galaxy. The solar system came into being about 4.5 billion years ago when a cloud of interstellar gas and dust collapsed, resulting in a solar nebula, a



[The Milky Way Galaxy: What We Know About It](#)

Galaxy Type Studying our own galaxy is difficult since we can't get outside of it and look back. We have to use clever tricks to study it. For instance, we look at all parts of the galaxy, and we do so in all available radiation bands. The radio and infrared bands, for instance, allow us to peer through regions of the galaxy that are filled with gas and dust and see stars ...



Contact Us

For catalog requests, pricing, or partnerships, please visit:
<https://www.vdbconstruction.co.za>