

Nasa discovery of new solar system





Overview

CAPE CANAVERAL, Fla. — Astronomers have discovered a rare in-sync solar system with six planets moving like a grand cosmic orchestra, untouched by outside forces since their birth billions of years ago. The find, announced Wednesday, can help explain how solar systems across the Milky Way galaxy came to be. What is NASA Discovery?

When it began in 1992, the program represented a breakthrough in the way NASA explores space. Discovery invites scientists and engineers to assemble a team to design exciting, focused planetary science missions that deepen what we know about the solar system and our place in it.

Did astronomers discover a rare in-sync Solar System?

“My jaw was on the floor,” he said. “That was a really nice moment.” Astronomers have discovered a rare in-sync solar system with six planets moving like a grand cosmic orchestra, untouched by outside forces since their birth billions of years ago.

How many exoplanets have been discovered?

NASA's Transiting Exoplanet Survey Satellite (TESS) launched in 2018 and has identified thousands of exoplanet candidates and confirmed over 320 planets. NASA's flagship space telescopes Spitzer, Hubble, and most recently the James Webb Space Telescope have also been used to discover and study exoplanets.

When was the first exoplanet discovered?

Just about 31 years ago, in 1992, the first exoplanets were confirmed when scientists detected twin planets Poltergeist and Phobetor orbiting the pulsar PSR B1257+12. In March 2022, just last year, scientists celebrated passing 5,000 exoplanets discovered.

How many exoplanets were discovered in 2022?



In March 2022, NASA passed 5,000 confirmed exoplanets. This data sonification allows us to hear the pace of the discovery of those worlds. In this animation, exoplanets are represented by musical notes played across decades of discovery.

What does NASA do?

NASA explores the unknown in air and space, innovates for the benefit of humanity, and inspires the world through discovery. Overview Most of the exoplanets discovered so far are in a relatively small region of our galaxy, the Milky Way.



Nasa discovery of new solar system



Discovery Alert: Earth-sized Planet Has a 'Lava Hemisphere'

The discovery: In a system with two known planets, astronomers spotted something new: a small object transiting across the Sun-sized star. This turned out to be another planet: extra hot and Earth-sized. Key Facts: The newly-spotted planet, called HD 63433 d, is tidally locked, meaning there is a dayside which always faces its star and a side that is ...

Discovery Alert: A 'Super-Earth' in the Habitable Zone

The discovery: A "super-Earth" ripe for further investigation orbits a small, reddish star that is, by astronomical standards, fairly close to us - only 137 light-years away. The same system also might harbor a second, Earth-sized planet. Key facts: The bigger planet, dubbed TOI-715 b, is about one and a half times as wide as Earth, and orbits within the ...



In Depth , Our Solar System - NASA Solar System Exploration

Formation Formation Our solar system formed about 4.5 billion years ago from a dense cloud of interstellar gas and dust. The cloud collapsed, possibly due to the shockwave of a nearby exploding star, called a supernova. When this dust cloud collapsed, it formed a

Nasa creates history with discovery of 6 new planets outside Solar System

Scientists have discovered six new exoplanets --



HD 36384 b, TOI-198 b, TOI-2095 b, TOI-2095 c, TOI-4860 b, and MWC 758 c. All of them are outside the Solar System.

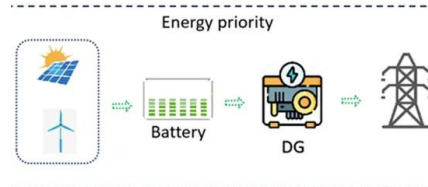


New Frontiers Program

New Frontiers Program Missions in NASA's New Frontiers Program tackle specific solar system exploration goals identified as top priorities by the planetary science community. The strategy is to explore the solar system with medium-class spacecraft missions

Webb Confirms Its First Exoplanet - Exoplanet Exploration: ...

Researchers confirmed an exoplanet, a planet that orbits another star, using NASA's James Webb Space Telescope for the first time. Formally classified as LHS 475 b, the ...



Unexpected Discovery by NASA's New Horizons Redefines Solar System

New Horizons spacecraft's observations suggest the Kuiper Belt extends far beyond its thought boundary, potentially indicating a larger region or a second belt filled with icy, rocky objects, challenging existing solar system models. Credit: SciTechDaily NASA 's New Horizons has discovered unexpectedly high dust levels in the Kuiper Belt, hinting at a larger ...



NASA Telescope Reveals Largest Batch of Earth-Size

The discovery sets a new record for greatest number of habitable-zone planets found around a single star outside our solar system. All of these seven planets could have ...



10 out-of-this-world solar system discoveries made in 2023

At the time, this set a new solar system record. The newly discovered Jovian moons are small, ranging from 0.6 to 2 miles (1 to 3.2 kilometers) wide, and most of them have wide orbits -- nine of

NASA's New Horizons Detects Dusty Hints of ...

New observations from NASA's New Horizons spacecraft hint that the Kuiper Belt - the vast, distant outer zone of our solar system populated by hundreds of New observations from NASA's New Horizons spacecraft hint ...



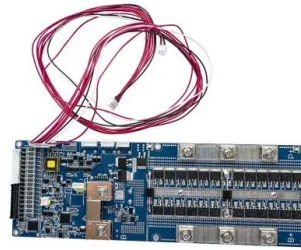
20 Breakthroughs from 20 Years of Science aboard the

New water purification systems: Water is vital for human survival. Unfortunately, many people around the world lack access to clean water. At-risk areas can gain access to advanced filtration and purification systems through technology that was developed for the space station, enabling the astronauts living aboard to recycle 93% of their water.



Detailing the Formation of Distant Solar Systems with

A team led by Dr. Thomas Henning of the Max Planck Institute for Astronomy in Heidelberg, Germany, will employ NASA's upcoming James Webb Space Telescope to survey ...



Detailing the Formation of Distant Solar Systems with

Webb will solve mysteries in our solar system, look beyond to distant worlds around other stars, and probe the mysterious structures and origins of our universe and our place in it. Webb is an international program led by NASA with its partners, ESA (European

Webb Discovers Methane, Carbon Dioxide in Atmosphere of K2-18 b

A new investigation with NASA's James Webb Space Telescope into K2-18 b, an exoplanet 8.6 times as massive as Earth, has revealed the presence of carbon-bearing molecules including methane and carbon dioxide. Webb's discovery adds to recent studies



Overview , Science

Before Cassini, we had only brief glimpses of the discoveries awaiting us at Saturn. Pioneer 11 and Voyagers 1 and 2 conducted flybys decades earlier, taking pictures, measurements and observations as they zoomed past. These missions shed new light on Saturn



New Solar System Discovered by NASA Could Shed Light on Ours

Scientists say few solar systems' planets move in such synchrony as the new one. By: MEGA "My jaw was on the floor," University of Bern's Hugh Osborn, who was part of the team, said."That was a really nice moment." According to The Associated Press, the formation is 100 light years away in the constellation Coma Berenices.



[NASA's Webb Confirms Its First Exoplanet](#)

Researchers confirmed an exoplanet, a planet that orbits another star, using NASA's James Webb Space Telescope for the first time. Formally classified as LHS 475 b, the ...

NASA And Google Just Announced They've Found Another Solar System ...

NASA and Google announced a "major discovery" on Thursday: another solar system with eight planets. That finding is due to the discovery of a new planet, Kepler-90i - a hot, rocky orb circling a sun-like star called Kepler-90, which is 2,545 light-years from Earth.



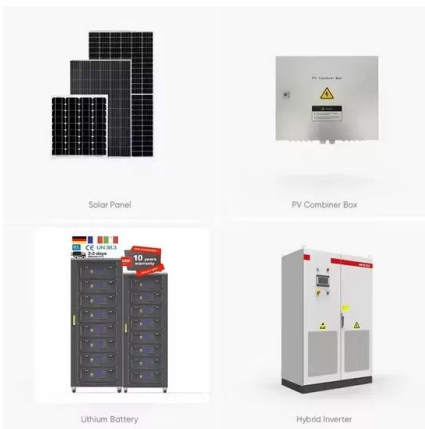
Nasa creates history with discovery of 6 new planets outside Solar System

Nasa has announced the discovery of six new worlds, pushing the total number of confirmed planets beyond our solar system to 5,502. This new milestone marks a significant advancement in our understanding of the universe and the ...



About the Planets

Our solar system has eight planets, and five dwarf planets - all located in an outer spiral arm of the Milky Way galaxy innovates for the benefit of humanity, and inspires the world through discovery. About NASA's Mission Join Us Home News & Events NASA+

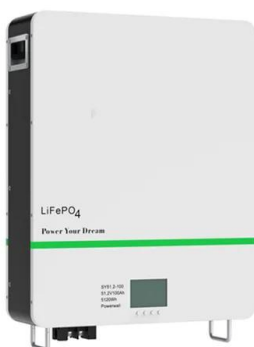


[50 Years of Solar System Exploration](#)

Edited by Linda Billings NASA's first successful mission to another planet, Mariner 2 to Venus in 1962, marked the beginning of what NASA Chief Scientist Jim Green describes in this volume as "a spectacular era" of solar ...

Voyager Finds Three Surprises Near Our Solar System's Edge

A trio of surprise discoveries from NASA's Voyager 1 spacecraft reveals intriguing new information about our solar system's final frontier. The findings appear in the Sept. 23 issue of Science. The surprises come as the hardy, long-lived spacecraft approaches the edge of our solar system, called the heliopause, where the sun's influence ends and the [...]



Discovery Alert: Watch the Synchronized Dance of a 6-Planet ...

The discovery: Six planets orbit their central star in a rhythmic beat, a rare case of an "in sync" gravitational lockstep that could offer deep insight into planet formation and evolution.



Discovery Alert: Watch the Synchronized Dance of a 6-Planet System

Fun facts: The discovery of this system is something of a detective story. The first hints of it came from NASA's TESS (the Transiting Exoplanet Survey Satellite), which tracks the tiny eclipses - the "transits" - that planets make as they cross the faces of their stars.

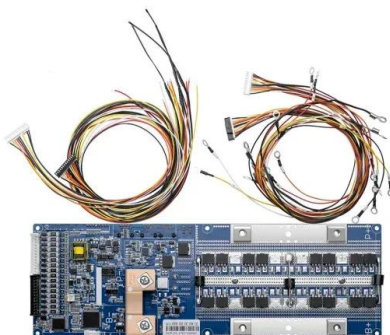


Scorching, Seven-Planet System Revealed by New Kepler

Artist's concept showing two of the seven planets discovered orbiting a Sun-like star. The system, called Kepler-385, was identified using data from NASA's Kepler mission. A system of seven sweltering planets has been revealed by continued study of data from

[New Discoveries from NASA's New Horizons](#)

NASA has announced an updated plan to continue New Horizons' mission of exploration of the outer solar system. Beginning in fiscal year 2025, New Horizons will focus on gathering unique heliophysics data, which can be ...



A new solar system has been found in the Milky Way. All 6

Rare "in-sync" solar system discovered by scientists 04:12 Astronomers have discovered a rare in-sync solar system with six planets moving like a grand cosmic orchestra, untouched by outside



Astronomers Stunned by Unexpected Discovery of New Celestial ...

Using the Subaru Telescope, astronomers have identified previously unknown celestial bodies in the outer Solar System, suggesting a larger, unexplored expanse that parallels other planetary systems. These findings, including a possible second ring of Kuiper Belt Objects, could reshape our underst



Exoplanets

Most of the exoplanets discovered so far are in a relatively small region of our galaxy, the Milky Way. ("Small" meaning within thousands of light-years of our solar system; one light-year ...

Discovery Alert: Watch the Synchronized Dance of a 6-Planet System

The discovery: Six planets orbit their central star in a rhythmic beat, a rare case of an "in sync" gravitational lockstep that could offer deep insight into planet formation and evolution. Key facts: A star smaller and cooler than our Sun hosts a truly strange family of planets: six "sub-Neptunes" - possibly smaller versions of our own Neptune - moving in a cyclic rhythm.



Contact Us

For catalog requests, pricing, or partnerships, please visit:
<https://www.vdbconstruction.co.za>