

# **National renewable energy laboratory golden**





## Overview

---

National Renewable Energy Laboratory (NREL) is a leading research and development organization in the field of renewable energy. NREL is a part of the U.S. Department of Energy and is located in Golden, Colorado. NREL is a leader in the development of new technologies and the testing of existing technologies. NREL is a leader in the development of new technologies and the testing of existing technologies.

The goal of the (PV) research done at NREL is to decrease the "nation's reliance on generated electricity by lowering the cost of delivered electricity and improving the of PV and ." Photovoltaic research at NREL is performed under the National Center for Photovoltaics (NCPV). A primary mission of the NCPV is to support ongoing ef.





### Complementarity of Renewable Energy-Based Hybrid Systems

Increased attention has focused on scenarios of rapid and deep decarbonization of the U.S. electricity supply, with least-cost solutions typically involving significant expansion of renewable energy, energy storage, and transmission assets.



### [National Renewable Energy Laboratory](#)

Overview  
National Center for Photovoltaics  
History  
Department of Energy funding  
Commercialization and Technology Transfer  
National Bioenergy Center  
National Wind Technology Center  
Sustainable Transportation and Mobility Research

The goal of the photovoltaics (PV) research done at NREL is to decrease the "nation's reliance on fossil-fuel generated electricity by lowering the cost of delivered electricity and improving the efficiency of PV modules and systems." Photovoltaic research at NREL is performed under the National Center for Photovoltaics (NCPV). A primary mission of the NCPV is to support ongoing ef...



### Publications , NREL

The National Renewable Energy Laboratory is a national laboratory of the U.S. Department of



Energy, Office of Energy Efficiency and Renewable Energy, operated by the Alliance for Sustainable Energy LLC.



### Joseph Berry -- National Renewable Energy Laboratory

Joseph Berry is a senior research scientist at NREL. He received his doctorate in physics from Penn State University in 2001. His thesis work focused on semiconductor spintronics with an emphasis on coherent spin transport across ...



### National Renewable Energy Laboratory Documents

The National Renewable Energy Laboratory (NREL), located in Golden, Colorado, is the United States' primary laboratory for renewable energy and energy efficiency research and ...



### NREL STATE: CO

LABORATORY, SOUTH TABLE MOUNTAIN CAMPUS, GOLDEN, COLORADO Rationale for determination: The U.S. Department of Energy's (DOE) National Renewable Energy Laboratory (NREL) proposes to design, construct, and operate the Energy Materials





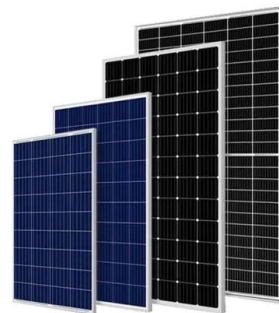
### Energy Department's New Laboratory at NREL Earns LEED ...

The Energy Systems Integrations Facility at National Renewable Energy Laboratory in Golden, Colorado has received a LEED® (Leadership in Energy and Environmental Design) Platinum designation for new construction by the U.S. Green Building Council. The Energy Systems Integrations Facility (ESIF) at the Energy Department's National Renewable ...



### Renewable Resources and Enabling Sciences Center -- National Renewable

National Renewable Energy Laboratory (NREL).  
Research output: NREL > Poster Bioreactor 100%  
Lineages 100% Cupriavidus Necator 100%  
Formate 100% Formic Acid 100% A Lipase from  
Lacticaseibacillus rhamnosus IDCC 3201 with  
Kang, M



### National Renewable Energy Laboratory, Science and Technology ...

Gold Silver Certified Introduction The U.S. Department of Energy's National Renewable Energy Laboratory (NREL) has added a light-filled, energy-efficient new research facility to its campus in Golden, Colorado August 2006, NREL's 71,347-ft2



### Careers

The National Renewable Energy Laboratory is a national laboratory of the U.S. Department of Energy, Office of Energy Efficiency and Renewable Energy, operated by the Alliance for Sustainable Energy LLC.





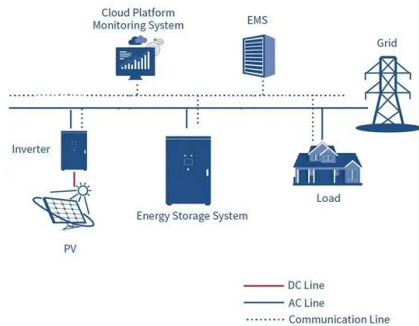
Research Facilities , NREL

NREL's 327-acre campus in Golden, Colorado, houses many research laboratories and the lab's administrative office. With a commitment to sustainable operations, the main campus boasts several LEED-platinum rated buildings, along with multiple on-site renewable energy installations.



**Cost Projections for Utility-Scale Battery Storage: 2023 Update**

National Renewable Energy Laboratory 15013 Denver West Parkway Golden, CO 80401 303-275-3000 o Technical Report NREL/TP-6A40-85332 June 2023 Cost Projections for Utility-Scale Battery Storage: 2023 Update Wesley Cole and Akash



**NREL/TP-500-38060 Wind Turbine for Offshore February 2009 ...**

National Renewable Energy Laboratory 1617 Cole Boulevard, Golden, Colorado 80401-3393 303-275-3000 o NREL is a national laboratory of the U.S. Department of Energy Office of Energy Efficiency and Renewable Energy Operated by the Alliance

Biden-Harris Administration Announces \$150

GOLDEN, Colorado--The Biden-Harris Administration, through the U.S. Department of Energy (DOE), today announced a \$150-million investment into the National Renewable Energy Laboratory (NREL) that will help the laboratory keep America on the cutting edge of clean-energy technology and lead the world in the transition to carbon-free power ...

**Commercial and Industrial ESS**

Air Cooling / Liquid Cooling

- Budget Friendly Solution
- Renewable Energy Integration
- Modular Design for Flexible Expansion





### Renewable Electricity Futures Study , Energy Analysis , NREL

RE Futures, funded by the U.S. Department of Energy's Office of Energy Efficiency and Renewable Energy, is a collaboration with more than 110 contributors from 35 organizations including national laboratories, industry, universities, and



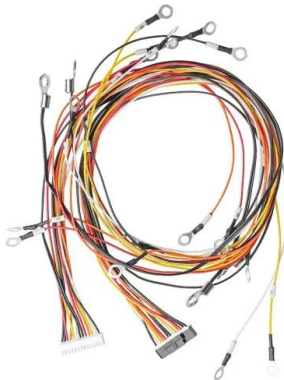
### Solar Research , NREL

NREL's solar energy research covers photovoltaics, concentrating solar power, solar grid and systems integration, and market research and analysis. NREL's solar research strives to enable reliable, low-cost solar energy at scale--on the grid and beyond



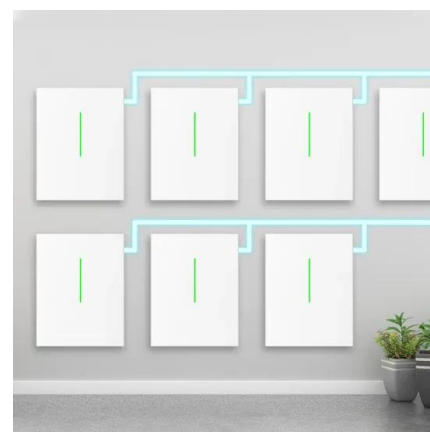
### Annual Technology Baseline: The 2023 Electricity Update

With the Annual Technology Baseline (ATB), the National Renewable Energy Laboratory annually provides an organized and centralized set of such cost and performance data. The ATB uses the best information from the Department of Energy national laboratories' renewable energy analysts.



### [National Renewable Energy Laboratory](#)

Golden, CO 237,091 followers. #TransformingEnergy. About us. The National Renewable Energy Laboratory (NREL), a Department of Energy national lab, is #TransformingEnergy as the nation's primary





??????????

?????????? (?: National Renewable Energy Laboratory ?? NREL),???? ?????? ???,????? ????? ?  
???? ??????????? NREL??? ...



### About NREL , NREL

At the National Renewable Energy Laboratory (NREL), we focus on creative answers to today's energy challenges. From breakthroughs in fundamental science to new clean technologies to integrated energy systems that power our lives, NREL researchers are transforming the way the nation and the world use energy.



### Inertia and the Power Grid: A Guide Without the Spin

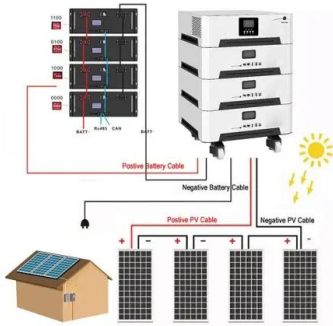
NOTICE This work was authored by the National Renewable Energy Laboratory, operated by Alliance for Sustainable Energy, LLC, for the U.S. Department of Energy (DOE) under Contract No. DE-AC36-08GO28308. Funding provided by GridLab. The views



### Kai Zhu -- National Renewable Energy Laboratory

Kai Zhu is a senior scientist in NREL's Chemistry and Nanoscience Center. He joined NREL in 2004 as a postdoctoral researcher, working with Arthur J. Frank on fundamental charge-carrier transport and recombination in photoelectrochemical cells, especially dye-sensitized solar cells.





### Annual Technology Baseline: The 2022 Electricity Update

With the Annual Technology Baseline (ATB), the National Renewable Energy Laboratory annually provides an organized and centralized set of such cost and performance data. The ATB uses the best information from the Department of Energy national laboratories' renewable energy analysts.

### Contact Information , NREL

Golden, Colorado Laboratories and Offices  
National Renewable Energy Laboratory 15013  
Denver West Parkway Golden, CO 80401  
303-275-3000 Washington, D.C. Office National  
Renewable Energy Laboratory 901 D. Street,  
S.W. Suite 930 View a list of



??????????

??????????(?: National Renewable Energy  
Laboratory ??NREL),??????????  
???,????????????????????????????????  
NREL????????????????????,???????????????????? ???????

### Jobs and Economic Development Impact (JEDI) Models , NREL

The National Renewable Energy Laboratory is a national laboratory of the U.S. Department of Energy, Office of Energy Efficiency and Renewable Energy, operated by the Alliance for Sustainable Energy LLC.





[Research Roadmap on Grid-Forming Inverters](#)

NOTICE This work was authored in part by the National Renewable Energy Laboratory, operated by Alliance for Sustainable Energy, LLC, for the U.S. Department of Energy (DOE) under Contract No. DE-AC36-08GO28308. Funding provided by the U.S. Department



**Best Research-Cell Efficiency Chart , Photovoltaic Research , NREL**

The National Renewable Energy Laboratory is a national laboratory of the U.S. Department of Energy, Office of Energy Efficiency and Renewable Energy, operated by the Alliance for Sustainable Energy LLC.



## Contact Us

---

For catalog requests, pricing, or partnerships, please visit:  
<https://www.vdbconstruction.co.za>