

New solar system in milky way





Overview

The is near the inner rim of the , within the of the , between the and Split linear structures (formerly). Based upon studies of stellar orbits around Sgr A* by Gillessen et al. (2016), the Sun lies at an estimated distance of 27.14 ± 0.46 kly (8.32 ± 0.14 kpc) from the Galactic Center. Boehle et al. (2016) found a smaller value of 25.

CAPE CANAVERAL, Fla. — Astronomers have discovered a rare solar system in the Milky Way that boasts six planets orbiting in perfect rhythm like a cosmic orchestra, untouched by outside forces since their birth billions of years ago. The find, announced Wednesday, could help explain how solar systems across our galaxy came to be. Is there a new solar system in the Milky Way?

A new solar system has been found in the Milky Way. All 6 planets are perfectly in-sync, astronomers say. November 30, 2023 / 3:17 PM EST / CBS/AP Astronomers have discovered a rare in-sync solar system with six planets moving like a grand cosmic orchestra, untouched by outside forces since their birth billions of years ago.

Could a rare in-sync Solar System help explain the Milky Way galaxy?

NASA via AP CAPE CANAVERAL, Fla. — Astronomers have discovered a rare in-sync solar system with six planets moving like a grand cosmic orchestra, untouched by outside forces since their birth billions of years ago. The find, announced Wednesday, can help explain how solar systems across the Milky Way galaxy came to be.

Did astronomers discover a rare solar system in the Milky Way?

Astronomers have discovered a rare solar system in the Milky Way that boasts six planets orbiting in perfect rhythm like a cosmic orchestra, untouched by outside forces since their birth billions of years ago. The find, announced Wednesday, could help explain how solar systems across our galaxy came to be.

Did astronomers discover six planets orbiting a nearby star in the Milky Way?

The high-powered Tess telescope, shown as an illustration, helped



astronomers discover six planets orbiting a nearby star in the Milky Way. Astronomers have discovered a rare solar system in the Milky Way that boasts six planets orbiting in perfect rhythm like a cosmic orchestra, untouched by outside forces since their birth billions of years ago.

Did astronomers discover a rare in-sync Solar System?

“My jaw was on the floor,” he said. “That was a really nice moment.” Astronomers have discovered a rare in-sync solar system with six planets moving like a grand cosmic orchestra, untouched by outside forces since their birth billions of years ago.

How far away is the in-sync Solar System?

The compact in-sync system, announced Wednesday, is 100 light-years away. (European Space Agency via AP) CAPE CANAVERAL, Fla. (AP) — Astronomers have discovered a rare in-sync solar system with six planets moving like a grand cosmic orchestra, untouched by outside forces since their birth billions of years ago.



New solar system in milky way

114KWh ESS

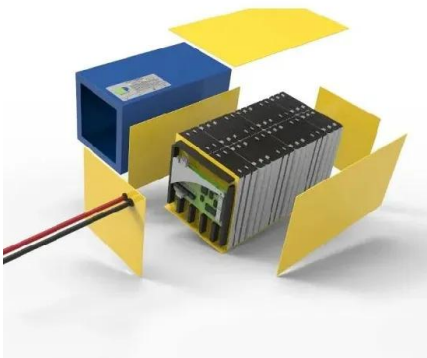


In Depth , Our Solar System - NASA Solar System Exploration

Introduction The planetary system we call home is located in an outer spiral arm of the Milky Way galaxy. Our solar system consists of our star, the Sun, and everything bound to it by gravity - the planets Mercury, Venus, Earth, Mars, Jupiter, Saturn, Uranus, and

The Milky Way

The Solar System The Universe Science Aeronautics Technology Learning Resources About NASA Español News & Events Multimedia NASA+ Featured 6 min read NASA's Hubble, Webb Probe Surprisingly Smooth Disk Around Vega



Six-planet solar system in perfect synchrony found in Milky Way

Astronomers have discovered six planets orbiting a bright, nearby star in perfect synchrony like a grand cosmic orchestra. The rare find can help explain how solar ...

New Six-Planet Solar System Found in Our Galaxy

Astronomers have discovered a rare in-sync solar system with six planets in our Galaxy, the Milky Way, which is untouched by outside forces since their birth billions of years ago. The find, announced on Nov. 29, can help explain how ...



A six-planet solar system in perfect synchrony has ...

Astronomers have discovered a rare in-sync solar system with six planets moving like a grand cosmic orchestra, untouched by outside forces since their birth billions of years ago.



[How the Milky Way works , Astronomy](#)

The Milky Way's star output comes from regions like this, where compression and heating ignites new suns. In this false-color image, radiation from young stars causes the gas to glow orange and red.



Solar system with 6 planets orbiting in-sync discovered in Milky Way ...

Astronomers have discovered a rare solar system with six planets moving in sync with one another. Estimated to be billions of years old, the formation 100 light-years away may help unravel some





Milky Way

OverviewAstrographyEtymology and mythologyAppearanceAstronomical historySize and massContentsStructure

The Sun is near the inner rim of the Orion Arm, within the Local Fluff of the Local Bubble, between the Radcliffe wave and Split linear structures (formerly Gould Belt). Based upon studies of stellar orbits around Sgr A* by Gillessen et al. (2016), the Sun lies at an estimated distance of 27.14 ± 0.46 kly (8.32 ± 0.14 kpc) from the Galactic Center. Boehle et al. (2016) found a smaller value of 25....



The Milky Way: Understanding Our Place in the Galaxy

It stood to reason that because the Milky Way was disk-shaped and spiral galaxies were disk-shaped, the Milky Way was probably a spiral galaxy. In the 1930s, astronomer R.J. Trumpler realized that the estimates of ...

The Solar System's Place In The Milky Way: Part 1

*For more detail on the layout of the spiral arms, and detailed maps of the solar neighbourhood, visit Kevin Jardine's jaw-dropping Galaxy Map site, which is a thing of beauty and a labour of love. + This approximate alignment between the galactic core, the sun and the Earth on the day of the December solstice was of course one of the foundations of a fatuous end-of ...



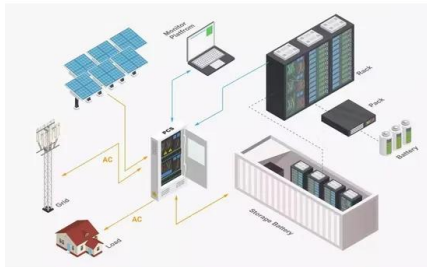
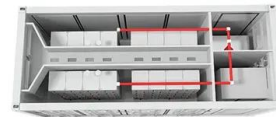
Solar system with 6 planets orbiting in-sync ...

Astronomers have discovered a rare solar system with six planets moving completely in sync with one another, a perfect cosmic dance. Estimated to be billions of years old, the formation 100



A new solar system has been found in the Milky Way. All 6 ...

Astronomers have discovered a rare in-sync solar system with six planets moving like a grand cosmic orchestra, untouched by outside forces since their birth billions of ...



'Feels Like Science Fiction': New Solar System With Multiple

Astronomers are beginning to unravel the the mysteries of planet formation after discovering a new solar system. Revolutionizing our understanding of how planets form and evolve, University of California-Irvine (UCI) scientists are offering the most detailed insights yet into a system of at least six exoplanets orbiting TOI-1136, a young dwarf star in the Milky Way, ...

[Where is Earth in the Milky Way Galaxy?](#)

Earth is in a relatively quieter part of the Milky Way Galaxy. Our solar system sits in one of the galaxy's many spiral arms, called the Orion Arm or Orion Spur. Picture the Milky Way as a swirling disk with a bright center and long, winding ...





Where Are We In The Milky Way , Milky Way Facts

How many Solar Systems are in the Milky Way? Well, there is only one Solar System in our galaxy, as only ours is officially called so. But astronomers have found more than 3,200 other stars with planets orbiting them in the Milky Way.

Rare Six-Planet Star System Discovered in Milky Way ...

This newly discovered system, about 100 light-years from Earth, is unusual because its planets orbit a bright host star in a pattern that appears unchanged since its birth at least 4 billion



NASA's Webb Reveals New Features in Heart of Milky Way

The NIRCам (Near-Infrared Camera) instrument on NASA's James Webb Space Telescope's reveals a portion of the Milky Way's dense core in a new light. An estimated 500,000 stars shine in this image of the Sagittarius C (Sgr C) region, along with some as-yet unidentified features.

Where is Earth in the Milky Way?

Much the same is true about our Solar System's position within the Milky Way. In truth, The Solar System (and Earth) is located about 25,000 light-years to the galactic center and 25,000





DETAILS AND PACKAGING



- 1 USER MANUAL PDF
- 2 RJ45 Cable For RS485/CAN
- 3 Battery in Parallel Cables
- 4 RJ45 TO USB Monitor Cable
- 5 M8 Terminal*4

Solar System Facts

Our planetary system is called "the solar system" because we use the word "solar" to describe things related to our star, after the Latin word for Sun, "solis." 2. Our solar system orbits the center of the Milky Way galaxy at about 515,000 mph (829,000 kph).

Milky Way and Our Location

Graphic view of our Milky Way Galaxy. The Milky Way Galaxy is organized into spiral arms of giant stars that illuminate interstellar gas and dust. The Sun is in a finger called the Orion Spur. Overlaid is a graphic of galactic longitude in relation to our Sun. Credit



LFP 12V 200Ah

Milky Way Galaxy , Size, Definition, & Facts , Britannica

3 ???· Milky Way Galaxy (sometimes simply called the Galaxy), large spiral system of about several hundred billion stars, one of which is the Sun. It takes its name from the Milky Way, the irregular luminous band of stars and gas clouds that stretches across the sky as



LFP 48V 100Ah

Another solar system in Milky Way? Scientists discover six

Just like our solar system in the Milky Way has eight (sorry Pluto, it's not nine) planets revolving around Sun, a planetary system a bit far from us has six worlds orbiting their star in perfect harmony, resembling to an extent our own solar system. Notably, both these systems are in our Milky Way itself. Chain of resonance for HD 110067 The Sun and eight planets ...



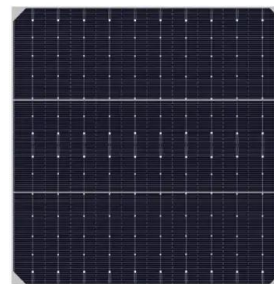


Solar System Billions of Years Old Discovered -- Details Here

According to the AP, the gas planets are more than double the size of Earth, with approximately nine to 54-day orbits. The newly discovered solar system resides within the Milky Way Galaxy. Here's everything you should know about this exciting discovery.

The Milky Way Galaxy

This annotated artist's concept illustrates the new view of the Milky Way, along with other findings presented at the 212th American Astronomical Society meeting in St. Louis, Mo. The galaxy's two major arms ...

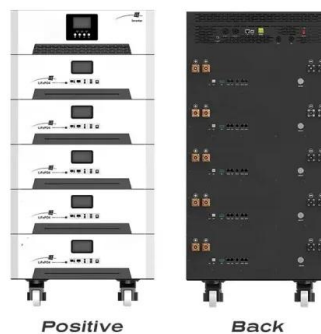


Rare solar system found in Milky Way with all 6 planets

Astronomers recently made an important discovery when they found a rare "in-sync" solar system with six planets all moving in one big grand harmony. Wed, 30 Oct 2024 09:20:36 GMT (1730280036682)

Rare six-planet system could unlock secrets to our solar

The rare find, announced Wednesday, can help explain how solar systems across the Milky Way galaxy came to be. Astronomers have discovered six planets orbiting a ...





New Solar System Discovered by NASA Could Shed Light on Ours

The new solar system was found in the Milky Way. By: MEGA According to NASA, a star smaller and cooler than our sun is at the center of the formation. The agency describes the "strange" family of planets as six "sub-Neptunes." The planets are "possibly



The Milky Way: Earth's home galaxy , Astronomy

Giant clouds of gas and dust sprinkled with splashy star clusters adorn the Milky Way's spiral arms, while the galaxy's vast halo teems with darker matter. Scientists think our galaxy has four

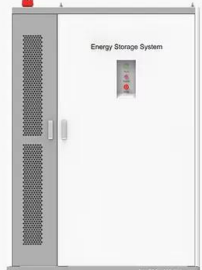
Commercial and Industrial ESS

Air Cooling / Liquid Cooling

- Budget Friendly Solution
- Renewable Energy Integration
- Modular Design for Flexible Expansion



PRODUCT INFORMATION



- BATTERY CAPACITY**
50kWh~500kWh
- DC VOLTAGE RANGE**
400V~1000V
- DEGREE OF PROTECTION**
IP54
- OPERATING TEMPERATURE RANGE**
-10~50°C

Milky Way galaxy: Facts about our cosmic neighborhood , Space

The Milky Way galaxy is our cosmic home. A barred spiral galaxy stretching 100,000 light-years across. Here we explore our galactic neighborhood in more detail. Skip to main content

Solar System

The Solar System's location in the Milky Way is a factor in the evolutionary history of life on Earth. Spiral arms are home to a far larger concentration of supernovae, gravitational instabilities, and radiation that could disrupt the Solar System, but ...





Contact Us

For catalog requests, pricing, or partnerships, please visit:
<https://www.vdbconstruction.co.za>