

Outdoor photovoltaic panel size diagram





Overview

What is the size of a solar panel?

The size of a solar panel is measured in watts, which indicates the amount of power it can generate. The most common solar panel sizes for residential installations are between 250W and 400W, while larger commercial installations may use panels up to 500W or more.

What are the dimensions of a residential solar panel in the UK?

The typical dimensions of a residential solar panel in the UK is 189cm x 100cm x 3.99cm (length, width and height) Solar panel weight is a crucial factor to consider when planning a rooftop solar installation. The weight of the panels, along with the mounting equipment, adds a significant load to your roof structure.

What is a photovoltaic (PV) solar panel?

This solar panel is a photovoltaic (PV) panel that offers several advantages over the standard solar panel size, making them a good alternative. Some of the benefits of this solar panel type include: Sleek weight and flexibility - because of its weight, this solar panel is easier to install in different locations.

How do I choose the right solar panel size?

The size of a solar panel should be chosen based on factors such as available space, energy needs, and budget. Solar panels can be combined to create larger systems, and the size of the system will depend on the energy needs of the user. Choosing the right size of the solar panel is important for maximizing energy production and cost savings.

What size solar panel do I Need?

The most common solar panel sizes for residential installations are between 250W and 400W, while larger commercial installations may use panels up to 500W or more. The size of a solar panel affects its efficiency, with larger



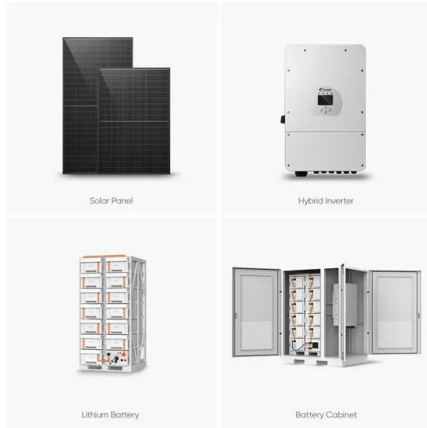
panels generally being more efficient but also more expensive and heavier.

What size solar panel should I buy in the UK?

Nevertheless, the typical size of a residential solar panel in the UK is 250W to 450W. It's important to note that when considering solar panels for your home or business, it's recommended to focus primarily on the wattage or power output rather than the physical dimensions.



Outdoor photovoltaic panel size diagram



How to connect a PV solar system to the utility grid

The utility connection for a PV solar system is governed by the National Electrical Code (NEC) Article 690.64. Always refer to the NEC code in effect or consult a licensed electrician for ...

Grounding Basics: Solar Panels

Grounding solar panel frames and mounts. To size the PV Array grounding conductor, use NEC table 250.66 shown in Appendix A. In the diagram below, once the circuit breaker ...



Solar Panel Size & Weight: The Ultimate Guide 2024

60-Cell Solar Panels. The typical size of a solar panel, such as the 60-cell variant, is designed in a 6×10 configuration and has dimensions of approximately 3.25 feet by ...

Solar Panel Sizes & Dimensions (UK): Simply Explained

For a typical residential installation, panels usually weigh between 18-21 kg, which is manageable with proper support. Commercial panels, however, can weigh up to 30 kg, requiring additional ...



The Ultimate Guide to Understanding and Creating a ...

These components help to facilitate the flow of electricity and ensure the system operates efficiently. Here are the key components typically included in a solar panel wiring diagram: Solar Panels: The heart of any solar power system, ...

The Complete Guide for Solar Panel Connectors

To connect solar panels in parallel, you require an additional component known as an MC4 combiner (or MC4 multi-branch connector), this name differs for other types of solar panel connectors. The image above ...



Schematic diagrams of Solar Photovoltaic systems

Schematic diagrams of Solar Photovoltaic systems. Have you decided to install your own photovoltaic system but don't know where to start? We have produced a number of connection ...



How Do Solar Panels Work? Diagram & Step by Step

In this guide, we will concisely explain how solar panels work with helpful diagrams and a step by step explanation. How solar panels work. Solar Energy Diagram. This ...

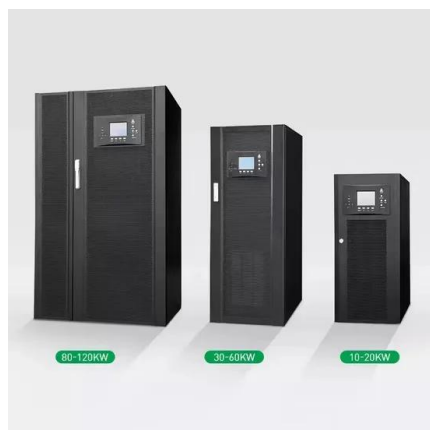


How to Create a Basic Solar Panel Wiring Diagram?

A solar panel wiring diagram or schematic should always be an essential part of your solar projects preparation. Power Your Outdoor Exploration Click on "custom size" and make ...

Guide to designing off-grid and hybrid solar systems

48V battery systems offer numerous benefits compared to lower voltage systems, including more solar power per MPPT, which results in far greater solar capacity per MPPT in ...



A Full Guide to Photovoltaic Array Design and Installation

Calculate the photovoltaic array size by estimating the daily energy demand, factoring system efficiency, and using location-specific solar irradiance data to determine how ...



A Guide to Large Photovoltaic Powerplant Design

At a minimum, design documentation for a large-scale PV power plant should include the datasheets of all system components, comprehensive wiring diagrams, layout ...



DIY Off-Grid Solar Power System for Homestead

Here's how the math worked out. Each 240W solar panel array connected 5 in series produced 1200 Watts, 186 Volts, & 8 Amps. Then connecting all 6 arrays in parallel ...



Solar Panels Dimensions & Drawings , Dimensions

When sunlight hits the cells, it frees electrons, creating an electric current. Solar panels can be installed in a variety of locations, from rooftops to vast fields. Whether it's a small setup powering a single home or a ...



Guide to Solar Panel Sizes & Dimensions (November ...)

In the solar panel size chart below, we've broken down the standard solar PV panel sizes by their average cost range. Keep in mind that these are the sizes and prices of a single solar panel, not a solar panel ...



[Beginners Guide to 12 Volt Solar Panels](#)

The solar panel calculator will then be able to tell you the minimum and recommended system size, as well as the recommended battery output. How many panels would I need to charge a 200ah battery? If you have ...



Residential Solar Interconnections (Full Guide)

PV system to the existing electrical system can be quite confusing. An improper connection In a line tap, the only consideration is the size of the wires being tapped with no regard of panel ...

Step-by-Step Guide to Understanding Solar Panel Wiring Diagrams

It ensures that any excess current is redirected safely to the ground. When wiring your solar panel system, make sure to follow the National Electrical Code (NEC) regulations and consult a ...



The Complete Off Grid Solar System Sizing Calculator

Step 2: Calculate the Wattage of the Solar Panel Array. The size, or Wattage, of your solar panel array depends not only on your energy needs but also on the amount of ...



The Complete Beginners Guide to RV Solar (Sizing, Design & Installation)

A Photovoltaic Array is defined as a grouping of solar cells that make up a single solar panel or group of panels. The diagram above shows 4 groups of solar panels (one per row). We ...



Solar Panel Sizes & Dimensions in the UK (2024) , Glow Green

Typical residential solar panels in the UK range from 250W to 450W, with dimensions of approximately 189cm x 100cm x 3.99cm. The size and number of panels you'll ...



Solar Panel Sizes & Dimensions UK (Do they even matter?)

In terms of dimensions, domestic solar panels average 1.7 metres long, and 1 metre wide and have a thickness of 3cm to 5cm. Domestic solar panels can weigh between ...



Solar Panel Wiring Diagram for All Setups [+ PDFs] - ...

What Is a Solar Panel Wiring Diagram? A solar panel wiring diagram (also known as a solar panel schematic) is a technical sketch detailing what equipment you need for a solar system as well as how everything should ...





How do Solar Panels Work? - Working of Photovoltaic (PV) Systems

When panels produce excess solar power, the net metering allows it to transport to the utility grid, rewarding energy credit in exchange. It is where the output of the solar ...



- LiFePO₄ Battery, safety*
- Wide temperature: -20~55°C*
- Modular design, easy to expand*
- The heating function is optional*
- Intelligent BMS*
- Cycle Life: > 6000*
- Warranty: 10 years*



[DIY 12V Solar Shed Lights: 5 Steps \(w/ Videos\)](#)

The charge controller also needed to be compatible with 12V solar power systems and able to handle the maximum current output by the solar panel. (A 20W 12V panel will put out around 1-1.5 amps in optimal conditions.)

Solar Photovoltaic Panel Sizes: A Complete Guide

Most residential solar panels' standard size range from 65 by 39 inches, or 17.3 square feet, to 78 inches by 39 inches, or 20.5 square feet. Average solar panel size -- large or small solar ...



What are solar AC and DC disconnects and why do you need them?

NEC Article 690.13 requires every PV system in the country to have a solar switch, and many municipalities now mandate rapid shutoff switches, which are essentially DC disconnects ...



Solar panel wiring basics: How to wire solar panels

However, as a solar professional, it's still important to have an understanding of the rules that guide string sizing. Solar panel wiring is a complicated topic and we won't delve into all of the ...



ESS



How to Wire a 12 Volt Solar System: Step-by-Step Guide with Diagram

One key component in a 12 volt solar system is the solar panel. These panels are responsible for converting sunlight into electricity through the photovoltaic effect. The wiring diagram will show ...

Photovoltaic system diagram: the useful design guide

Photovoltaic system diagram: components. A photovoltaic system is characterized by various fundamental elements:.. photovoltaic generator; inverter; electrical ...



[General Solar System Setup Guide](#)

This blog introduces how to properly set up a basic solar system, covering how to plug in and wire solar panels, how to hook up solar panels and connect solar panels to battery, and how to do solar panel wiring diagram. ...



Solar Panel Orientation and Positioning of Solar Panel

For a fixed solar installation, it is preferred that the PV panels are installed with a centralised tilt angle representing the vernal equinox, or the autumnal equinox, and in our example data ...



Contact Us

For catalog requests, pricing, or partnerships, please visit:
<https://www.vdbconstruction.co.za>