

# Ox stat pd photovoltaic panel





## Overview

---

The OX-Stat-PD Photovoltaic Panel is a placeable solar panel. Its cost is significantly lower than that of the RTG but requires direct sunlight, so it will only work when on the day side of a planet. What is ox-Stat-PD photovoltaic panel?

The OX-Stat-PD Photovoltaic Panel is a placeable solar panel. Its cost is significantly lower than that of the RTG but requires direct sunlight, so it will only work when on the day side of a planet. The OX-Stat-PD Photovoltaic Panel can, when properly set up by trained engineers, power several ground-breaking science experiments at a time.

Does the ox-Stat-PD photovoltaic panel have a warranty?

The OX-Stat-PD Photovoltaic Panel can, when properly set up by trained engineers, power several ground-breaking science experiments at a time. Reduced power output caused by allowing Jebediah to just 'unfold the floppy bit' is not covered under the manufacturer's warranty. Needs a deployed central station to operate.

What is ox-Stat solar panel?

The OX-STAT solar panel is a simple panel with no sun-tracking or deployment mechanics. As a result, it is very light and cheap. Cost reduced from 100 to 75; charge reduced from 0.75 to 0.35  $\$/s$ .

Is ox-Stat a physicsless panel?

The OX-STAT is also less susceptible to breakage than other panels. However, it can be easily broken if stepped on by Kerbals. It has no drag due to being a physicsless part .

How does ox-Stat work?

The value is achieved at Kerbin 's distance, with the panel pointed directly at the Sun. The OX-STAT is a permanently deployed solar panel. It has no



tracking ability and the lowest individual charge rate of any solar panel module, but it is extremely light and extremely cheap both in terms of unit cost and cost per unit electric charge generated.

How do I connect ox Stat PD to go-OB Ed monitor?

How do i connect the OX Stat PD to the Go-Ob ED Monitor?

I mean, how do I connect the Photovoltaic Panel in order to make it power the Go-Ob?

Just place it. Everything auto connects as long as it is in within a 20 meter radius. Originally posted by MechBFP: Just place it. Everything auto connects as long as it is in within a 20 meter radius.



## Ox stat pd photovoltaic panel



### [OX-Stat-PD Photovoltaic Panel](#)

OX-Stat-PD Photovoltaic Panel can, when properly set up by trained engineers, power several ground-breaking science experiments at a time. Reduced power output caused by allowing Jebediah to just 'unfold the flippy bit' is not covered under the ""Needs

### Why is my OX-Stat-PD Photovoltaic Panel showing 0 power ...

i have a problem with my experiments. I deployed the solar panels with my engineer. The scientist deployed the Slime Goo experiment. The stations are connected but the solar panels ...



- LIQUID/AIR COOLING
- INTELLIGENT INTEGRATION
- PROTECTION IP54/IP55
- BATTERY /6000 CYCLES



### OX-STAT panels behind fairings stop working after panels-off

Take an OKTO probe core, put an OX-STAT panel on top, put a fairing around it, and put a CX-4181 under it. From the launch pad, deploy the fairing, and check the panel -- it should reflect positive sun exposure and energy flow (in the da

### [OX-4W 3x2 Photovoltaic Panels](#)

The OX-4W 3x2 deploys a 3x2 solar cell layout. There is also a OX-4L 1x6 version available with a 1x6 layout. These panels generate electric charge only on extended state and directly illuminated by the light of Kerbol. For putting it operational just choose the Extend Panels option



in the popping up menu by right-clicking on it. .  
Unlike other solar panels, the OX ...



[Kerbal Space Program Deutschland](#)

OX-Stat-PD Photovoltaic Panel Ein alternativer Stromerzeuger ist das OX-Stat-PD-Photovoltaikmodul, das auch effizienter ist, wenn es von einem geschulten Ingenieur ordnungsgemäß eingerichtet wird. Facebook

**Communotron Ground HG-48**

The Communotron Ground HG-48 is an adapted version of Ionic Symphonic Protonic Electronics most popular space-based antenna. Designed to boost the signal of any ground-based communication devices to interplanetary ranges. Not designed to pirate movie



[OX-Stat-PD Photovoltaic Panel](#)

The OX-Stat-PD Photovoltaic Panel can, when properly set up by trained engineers, power several ground-breaking science experiments at a time. Reduced power output caused by allowing Jebediah to just 'unfold the flippy bit' is not covered under the manufacturer's warranty.





### **OX-STAT photovoltaic panel doesn't work : r/KerbalAcademy**

I just continued playing after 1.5 and noticed that my OX-STAT photovoltaic panels doesn't work (see picture). It seems that they slide inwards a bit... You do have batteries right? I looked at your craft and I couldn't see any batteries. Otherwise, it could be that your



### **Kerbal Space Program 1.12: "On Final Approach" is now available!**

Hello everyone! Today we wear our party helmets to celebrate the 10th anniversary of the first publicly released version of Kerbal Space Program, as well as the launch of our most ambitious free update ever! Kerbal Space Program 1.12: On Final Approach is the last major update of what became one of the most influential space flight simulators ever, but it also ...

### **Long term experiments impossible because power stops during ...**

Ox-Stat PD Photovoltaic Panel They were placed close enough to each other to work together (all 3 say "connected"). The Experiment Control Station and the Photovoltaic Panel were both installed by Bill, (near the start of the game, Engineer level 0).



### **Ionographer PD-22**

Usage The counter part to the weather station, this experiment only works on bodies without an atmosphere. Science per hour formula The science per hour formula is as follows: base value of the module (0.3125) · kerbal level multiplier · ...



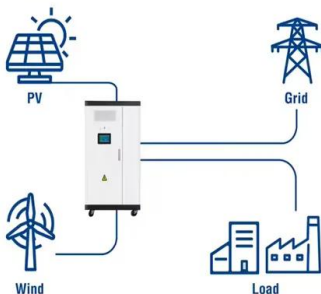
- TELECOM CABINET
- BRAND NEW ORIGINAL
- HIGH-EFFICIENCY

### Parts/DeployedScience/DeployedScience/solarPanel.cfg

Bring a trained engineer or this part will only produce enough power for one other unit.  
 attachRules = 0,0,0,0,0 mass = 0.015  
 dragModelType = default maximum\_drag = 0.1  
 minimum\_drag = 0.1 angularDrag = 2  
 crashTolerance = 8 maxTemp = 1200 // = 1200



### Utility-Scale ESS solutions



### [OX-10C Photovoltaic Panels](#)

Usage The OX-10C is a deployable solar panel with a unique circular shape. These panels generate electric charge only when extended and directly illuminated by the light of Kerbol. To extend, just click the Extend Panels option in the part menu by right-clicking on it. option in the part menu by right-clicking on it.

### [OX-STAT-XL Photovoltaic Panels](#)

OX-STAT-XL Photovoltaic Panels OX-STAT-XL Photovoltaic Panels By Dr. Kerbal October 5, 2020 in Prelaunch KSP2 Discussion Share More sharing options Followers 1 Recommended Posts Dr. Kerbal Posted October 5, 2020 Dr. Kerbal 1,317 About me:





### **OX-Stat-PD solar panel wont produce potency (breaking grounds ...**

I'm playing ksp on the latest version (1.11 i think), with both dlc installed, I'm at mun with an engineer (bill), placed the solar panel, the control station and the Goo observation as well, it ...



### My solar panels don't work

The solar panels that I use don't work. The ox-stat, ox-4w(both the 2x3 & 1x6), ox-stat-xl don't produce electric charge even when the sun is pointing directly on them. They track the sun. The only solar array that works is the biggest one (Gigantor xl solar array).



### OX-Stat-PD Photovoltaic Panel/Box

To add content which doesn't belong to this template edit the English page (or one of its translations). OX-Stat-PD Photovoltaic Panel. Solar panel by. Probodobodyne Inc. Cost. (total) ...

### **KSP Loading Breaking Ground under the spotlight!**

An alternative power generator is the OX-Stat-PD Photovoltaic Panel, which will also be more efficient when properly set up by a trained engineer. Communotron Ground HG-48 Although the Experiment Control Station has its own data transmission device, if you're on a faraway planet, you might need to bring the Communotron Ground HG-48 antenna with you to boost the signal ...

**TAX FREE**

**ENERGY STORAGE SYSTEM**

**Product Model**  
HJ-ESS-215A(100KW/215KWh)  
HJ-ESS-115A(50KW 115KWh)

**Dimensions**  
1600\*1280\*2200mm  
1600\*1200\*2000mm

**Rated Battery Capacity**  
215KWH/115KWH

**Battery Cooling Method**  
Air Cooled/Liquid Cooled

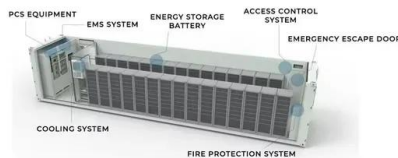


### Grand Slam Passive Seismometer

For example a 4.5t impactor hitting at 1000m/s has an energy of  $0.5 \cdot 4500\text{kg} \cdot 1000\text{m/s}^2 = 2.25\text{e9J}$ . On Moho this gives a sensor reading of  $2.25\text{e9} / 2.02\text{e9} = 1.11$  i.e. 111%. Distance Attenuation The attenuation value depends on the distance of the impact

### Serenity/Parts/DeployedScience/solarPanel.cfg

Bring a trained engineer or this part will only produce enough power for one other unit.  
attachRules = 0,0,0,0,0 mass = 0.015  
dragModelType = default maximum\_drag = 0.1  
minimum\_drag = 0.1 angularDrag = 2  
crashTolerance = 8 maxTemp = 1200 // = 1200



### OX-STAT Photovoltaic Panels/Box

Solar panel by Probodobodyne Inc Radial size Radial mounted Cost (total) 75.00 Mass (total) 0.005 t Drag 0.2 Max. Temp. 1200 K Impact Tolerance 8 m/s Research Electrics Unlock cost 1 200 Since version 0.18 Part configuration radialFlatSolarPanel.cfg

### **Go-ob ED Monitor**

Usage Use a scientist to deploy this experiment. Works everywhere. Science per hour formula The science per hour formula is as follows: base value of the module (0.28125) · kerbal level multiplier · body surface science multiplier The table for the kerbal multiplier



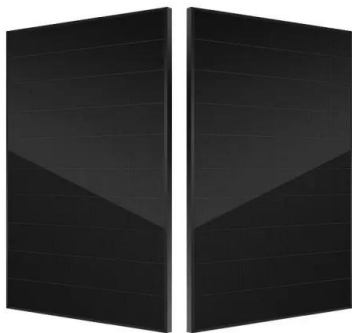


### OX-STAT Photovoltaic Panels

The OX-STAT solar panel is a simple panel with no sun-tracking or deployment mechanics. As a result, it is very light and cheap. -- Probodobodyne Inc. " Changes 1.2 Moved from Utility to Electrical 1.0.1 Cost reduced from 100 to 75; charge reduced from 0.75

### [1.12.4] SimpleLogistics! (SLOG) v2.0.6.0

EXPERIMENTAL: Add SimpleLogistics! to OX-Stat-PD Photovoltaic Panel (DeployedSolarPanel) produces .15 (max) EC/s has a battery of 25 EC units needs sunlight all the normal rules for solar apply range of ...



### **How do i connect the OX Stat PD to the Go-Ob ED Monitor?**

#1. Luckas1203 Jun 6, 2019 @ 10:17pm. Originally posted by MechBFP: Just place it. Everything auto connects as long as it is within a 20 meter radius. I did it, in fact the Photovoltaic panel ...

### **1.12**

Updated text for OX-Stat-PD Photovoltaic Panel, 8 languages. Parts New solar panels! OX-10L 1x5, SP-10L 1x5, OX-10C and SP-10C Photovoltaic Panels. Fix LV-N Nerv, Stayputnik, RA-15 Relay Antenna, LV-T45 Swivel, LV-T30 Reliant, Z-200 Rechargeable





### [OX-4L 1x6 Photovoltaic Panels](#)

The OX-4L 1x6 deploys a 1×6 solar cell layout. There is also a OX-4W 2x3 version available with a 2x3 layout. These panels generate electric charge only on extended state and directly illuminated by the light of Kerbol. For putting it operational just choose the Extend Panels option in the popping up menu by right-clicking on it. . The action groups can make this ...



### **PD-3 Weather Analyzer**

Usage Use a scientist to deploy this experiment. This only works on atmospheric bodies such as Kerbin or Eve. Science per hour formula The science per hour formula is as follows: base value of the module (0.3) · kerbal level multiplier · body surface science multiplier



## **Contact Us**

---

For catalog requests, pricing, or partnerships, please visit:  
<https://www.vdbconstruction.co.za>