

PV panel and beam dimensions





Overview

As you can imagine, you can get almost any size solar panel you desire, from single tiles to ones that cover the entire roof. There are even companies that will craft custom and bespoke solar panels for your roof. However, if you have a particularly small roof there's no need to be too worried as you can still install solar.

The majority of solar panels for sale in the UK average around 350 watts (W) in power for residential units. However, it's quite easy to get your hands on more powerful solar panels, often up to 500 W if you have an extra large.

Below we have detailed some of the most common solar panel installations in the UK for domestic properties. Please note that both the costs and final.

If you have a small home or want to power mobile vehicles like caravans and campervans, the good news is that there are many smaller-sized systems available. This includes small solar.



PV panel and beam dimensions



Mounting Solar Panels: A Complete Beginner's Guide to Installation

See also: Solar Panels on Metal Roof (Advantages + Disadvantages) Ground Mounting. See also: Solar Panels for Flat Roofs (Installation Options) Step 1: Creating a Solid ...

Solar Panel Sizes & Dimensions In The UK (2024)

Understanding Solar Panel Dimensions and Sizes. Solar photovoltaic (PV) systems contribute to environmental conservation by reducing carbon footprint, lowering energy costs, and providing independence from the ...



Solar Panels Ireland Cost Calculator [2025 Version]

Easy to use solar pv calculator that shows you the roof space needed, effects of panel orientation and roof slope, and even the difference between the counties of Ireland. hello@purevolt.ie 091 413 308 (Galway) / 01 513 3587 (Dublin)

A cooling design for photovoltaic panels - Water-based PV/T ...

The experimental and theoretical analyzes exhibit that the PV panels are greatly influenced by temperature compared to other parameters. Higher the operating temperature ...



Mechanical analysis and design of large building integrated

The connections between the panel and beam are required to be seamless to avoid leakage problems (Yin et al., which can be simplified as a linear spring. In addition, ...



Steel Structures for PV Panel

Steel structures for PV panels are complex metal structures, consisting of lightweight, structural open section profiles. They are used to support photovoltaic panels in PV park installations. ...



Solar Panel Sizes and Wattage Explained

Solar Panel Size. It focuses on maximum electricity generation and overall capacity rather than the quantity of panels. To calculate the required system size, multiply the ...





Optimum location and influence of tilt angle on ...

With the growing demand of economically feasible, clean, and renewable energy, the use of solar photovoltaic (PV) systems is increasing. The PV panel performance to generate electrical energy



Solar panel sizes and dimensions explained , FMB

Based on FMB's best solar panels, the average solar panel dimensions in the UK are: Solar panel size: 1,945.5mm (length) x 1,130.1mm (width) x 31.25mm (height) ...

Solar Panel Sizes and Wattage: A Comprehensive Guide to ...

Solar panels come in various sizes depending on their wattage or power output. A common residential solar panel size is approximately 65 inches by 39 inches, and typically ...



Design and Analysis of Steel Support Structures Used ...

The results show that: (1) according to the general requirements of 4 rows and 5 columns fixed photovoltaic support, the typical permanent load of the PV support is 4679.4 N, the wind load being 1



Solar Panel Sizes And Wattage , Sizing, Dimensions

The new panel sizes, up to 2.4m long and 1.3m broad, are based on the larger 180 and 210mm wafer (based silicon cells are fabricated from slices of either single-crystal or multi-crystalline silicon) sizes. This is a size ...



Guide to Solar Panel Sizes & Dimensions (November ...

Solar cell dimensions are typically around 189 x 100 x 3.99cm (6.2 x 3.28 x 0.13 feet), while solar panel dimensions are usually between 1.6m² to 2m² (17.22 to 21.53 square feet). The physical size of the solar panel is ...

Solar Photovoltaic Panel Sizes: A Complete Guide

These solar panels are made from melted multiple small silicon crystals and have a distinctive blue colour.. They are slightly less competent than monocrystalline PV cells but are also less ...



Higher Anti-Rust Performance
Lower Internal Impedance



Design and Analysis of Steel Support Structures Used in Photovoltaic ...

Solar panels (SPs) can be various cross-sections (e.g., square, rectangle) and sizes but their main purpose is to convert the sun light in order to make electricity. Normally, solar power ...



Solar panel inclination angle, location and orientation

Any implementation of a sustainable photovoltaic solar energy system implies the optimization of the resources to be used. Therefore, it is the basis for the design and ...



Solar Panel Battery Storage: Can You Save Money Storing ...

Find out about energy suppliers' solar panel packages and how much solar panels cost. Battery storage products and prices. The batteries below range from the size of a ...

A Guide to Large Photovoltaic Powerplant Design

All decisions regarding the engineering of a large solar PV power system must be carefully considered so that initial decisions made with cost savings in mind do not result in ...



Solar Panel Sizes, Dimensions & Weight

Solar panels are made up of solar cells, which are the 'squares' you can see on the panels. Cells use the photovoltaic effect to convert the energy of light directly into ...



Ground Mounted PV Solar Panel Reinforced Concrete Foundation

Ground Mounted PV Solar Panel Reinforced Concrete Foundation A ground mounted solar panel system is a system of solar panels that are mounted on the ground rather than on the Size ...



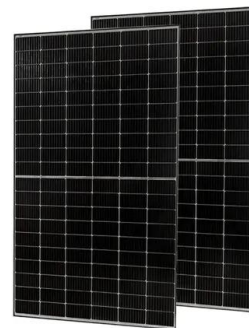
PERFORMANCE COMPARISON OF FIXED, SINGLE, AND DUAL AXIS ...

direct. Direct beam fraction describes the ratio of direct beam to total radiation. Previous research nominally identical PV systems on how various real world direct beam fractions affect PV array ...



[Solar Panel Size Guide . Sunhub](#)

One oft-overlooked element of the solar buying process is the dimensions of the panels. Size and weight of solar panels affect installation costs, safety. Search (216)800-9300 Have Questions? We have answers! (216



Design and Simulation of a Solar Tracking System for ...

After installing a solar panel system, the orientation problem arises because of the sun's position variation relative to a collection point throughout the day. It is, therefore, necessary to change the position of the ...





Solar Panel Sizes & Dimensions (UK): Simply Explained

Here's a few reasons why PV panel size matters:
The larger the panel, the more solar cells it can contain, allowing it to produce more electricity.
However, larger panels don't automatically ...



Beam Dimensions , Section Properties and Dimensions

Beam dimensions are the ultimate resource for structural engineers to find everything they need to know about steel, aluminum, timber, and cold-formed beams. With section properties and ...

Solar PV Cell Sizes and Formats

What are common PV panel sizes? There are two common types of standard solar panels: 60-cell and 72-cell. A single solar cell has a square shape of 6" x 6". A 60-cell panel has a 6x10 grid arrangement. A 72 ...



Solar Panel Dimensions Sizes and Wattage

Monocrystalline solar panels. They comprise monocrystalline silicon cells, which offer high efficiency and a neat aesthetic (black-colored cells). Their dimensions vary ...



Solar Panel Sizes, Dimensions & Wattages In The UK

The number of panels you will need depends on the desired size of your solar system (i.e., the total energy requirement). Common system sizes include 3kW, 4kW, and ...



Contact Us

For catalog requests, pricing, or partnerships, please visit:
<https://www.vdbconstruction.co.za>