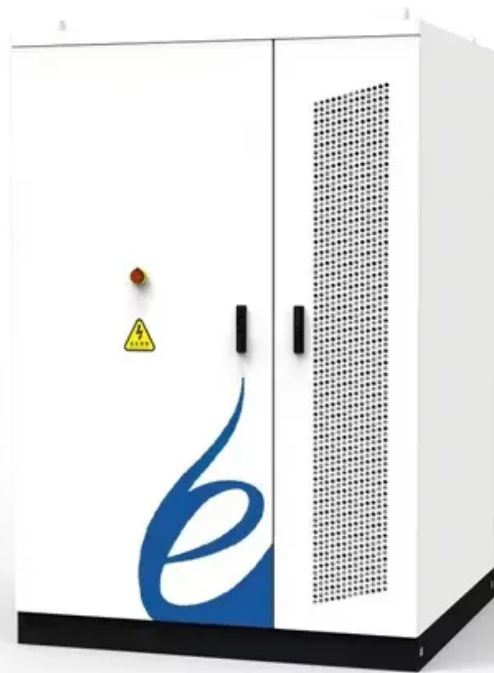


Phoebe solar system





Overview

Phoebe's orbit is retrograde; that is, it orbits Saturn opposite to Saturn's rotation. For more than 100 years, Phoebe was Saturn's outermost known moon, until the discovery of several smaller moons in 2000. Phoebe is almost 4 times more distant from Saturn than its nearest major neighbor (Iapetus), and is.

Phoebe is the most massive with a diameter of 213 km (132 mi). It was discovered by [Gale](#) on from photographic plates that had been taken by [Smith](#).

Phoebe is roughly spherical and has a diameter of 213 ± 1.4 km (132 mi), approximately one-sixteenth that of the Earth. It is.

Unlike Saturn's other moons, Phoebe was not favorably placed for the Voyager probes. [Cassini](#) observed Phoebe for a few hours in September.

- [at](#) • • , BBC News, June 14, 2004 .

DiscoveryPhoebe was discovered by [Smith](#) on 18 March 1899 from photographic plates that had been taken starting on 16 August 1898.

Phoebe formed in the protoplanetary disk within three million years after the formation of Saturn. This was early enough that sufficient radioactive [uranium](#) was present.

-



Phoebe solar system



ESA Science & Technology

If this is the case then study of Phoebe could provide vital clues as to the conditions in the early history of the solar system. There are many unanswered questions about Phoebe. The Voyager 2 images, taken from a distance of 2.2 million km, raise many more questions than answers.

[All about Phoebe , EurekaAlert!](#)

Data from the NASA/ESA/ASI Cassini-Huygens mission are providing convincing evidence that Saturn's moon Phoebe was formed elsewhere in the Solar System, and was only later caught by the planet's



[Fascinating Phoebe , Astronomy](#)

Phoebe's cyanide signature has been detected on just two other solar-system objects, Comet Borrelly and the dark face of Iapetus, Saturn's outermost large moon. Brad Dalton of NASA's Ames



All about Phoebe Moon

All about Phoebe Moon May 27 2005 Data from the NASA/ESA/ASI Cassini-Huygens mission are providing convincing evidence that Saturn's moon Phoebe was formed elsewhere in the Solar System, and was



Arrival and Departure at Phoebe

As it entered the Saturn system, NASA's Cassini spacecraft performed its first targeted flyby of one of the planet's moons. On June 11, 2004, Cassini passed Phoebe, the largest of Saturn's outer or "irregular" moons, at an altitude of just 1,285 miles (2,068 kilometers).



Saturn's moon Phoebe as a captured body from the outer Solar ...

Phoebe's generally dark surface shows evidence of water ice 1, but otherwise the surface most closely resembles that of C-type asteroids 2 and small outer Solar System bodies ...



Phoebe in 3-D

NASA's Jet Propulsion Laboratory, the leading center for robotic exploration of the solar system. Phoebe's violent, cratered past is more evident in this 3-D image of the tiny moon. The Sun is coming from the left, illuminating craters and bumps on the surface, along





Phoebe Solar

Phoebe Solar is an operating solar photovoltaic (PV) farm in Winkler County, Texas, United States. Project Details Table 1: Phase-level project details for Phoebe Solar Status Commissioning year Nameplate capacity Technology Owner Operator Operating 2019



All about Phoebe Moon

Data from the NASA/ESA/ASI Cassini-Huygens mission are providing convincing evidence that Saturn's moon Phoebe was formed elsewhere in the Solar System, and was only later caught by the planet's

ESA

Phoebe might indeed be an icy wanderer from the distant outer reaches of the Solar System, which, like a comet, was dislodged from the Kuiper Belt and captured by Saturn when the planet was forming. Whilst studying the nature of Phoebe may give scientists clues on the origin of the building blocks of the Solar System, more data are needed to reconstruct the ...



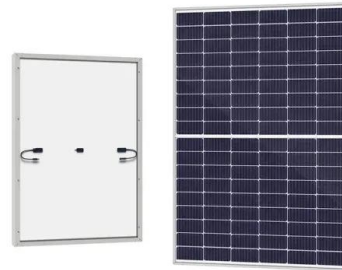
Compositional maps of Saturn's moon Phoebe from imaging ...

The presence of all these compounds makes Phoebe one of the most compositionally diverse objects in our Solar System, consistent with a surface of cometary ...



Distant Phoebe

Voyager 2 took this photo of Saturn's outer satellite, Phoebe, on September 4, 1981, from 2.2 million kilometers (1.36 million miles) away. The photo shows that Phoebe is about 200 kilometers (120 miles) in diameter, ...



[Phoebe's Surface Reveals Clues to Its Origin](#)

Phoebe may be an icy interloper from the distant outer solar system which found itself captured by giant Saturn in its earliest, formative years. Final conclusions on Phoebe's ...

Phoebe

Phoebe orbits Saturn close to the ecliptic (the plane in which Earth and most other planets orbit the Sun), rather than in Saturn's equatorial plane as the other Saturn satellites do. And Phoebe's orbit is retrograde -- in ...



[19 Largest Moons in the Solar System](#)



Image Editorial Credit: NASA's Marshall Space Flight Center/ Flickr Titan, Saturn's largest moon, spans 5,151 kilometers in diameter, making it the second-largest moon in the solar system. What sets Titan apart is its dense, nitrogen-rich atmosphere, thicker than



Phoebe , Icy Surface, Orbit & Rings , Britannica

Dust from impacts on Phoebe are the source of Saturn's outermost ring, which extends from 7.3 to 11.8 million km (4.6 to 7.4 million miles) from Saturn--the largest planetary ring in the solar system. The Spitzer Space Telescope discovered this ring; its observations showed an extremely tenuous optical depth of 2×10^{-8} .



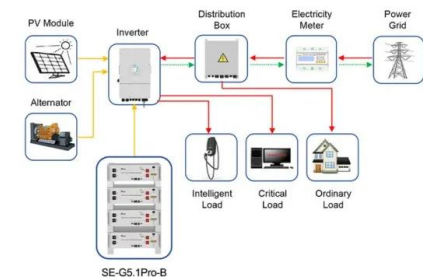
Cassini Makes Close Observations of Phoebe - ...

With its flyby of Phoebe, the Cassini spacecraft has completed the first satellite flyby in its four-year tour of the Saturn system. NASA's Deep Space Network received confirmation at 7:52 a.m. PDT today. The spacecraft ...



Solar System

The Solar System remains in a relatively stable, slowly evolving state by following isolated, gravitationally bound orbits around the Sun. Phoebe is the largest irregular satellite of Saturn. [183] Uranus (18.3-20.1 AU), [D 6] uniquely among the planets, orbits the



Application scenarios of energy storage battery products

Phoebe's Dark, Chilly Birth

Saturn's misfit moon Phoebe may be an intruder from our solar system's outermost frontier. A diverse brew of primitive compounds on Phoebe's surface suggests that the tiny moon was born among a remote reservoir of cometlike bodies and eventually drifted into Saturn's gravitational field, where it has remained ever since.



The Phoebe ring

The model simulation suggests that it would take more than the age of the solar system for half of the particles to be removed from the system by re-collision with Phoebe, so most of the biggest chunks are still out there somewhere in Phoebe's orbital space.



More about Phoebe

On June 11, 2004 Cassini passed close to Phoebe on its way into the Saturn system, giving us our first real look at it since Voyager and at much higher resolution. Most of Saturn's moons are bright but Phoebe's albedo is very low (.05), as dark as lampblack.

Phoebe in 3-D

Phoebe in 3-D September 3, 2004 Full-Res: PIA06426 Phoebe's violent, cratered past is more evident in this 3-D image of the tiny moon. The Sun is coming from the left, illuminating craters and bumps on the surface, along with a prominent ...



The Face of Phoebe

Phoebe's true nature is revealed in startling clarity in this mosaic of two images taken during Cassini's flyby on June 11, 2004. Solar System Home Explore This Section The Face of Phoebe June 13, 2004 Credit NASA/JPL/Space Science Institute PIA Number



Saturn's Moon Phoebe

Phoebe is the last of the known satellites of Saturn, at a distance of 12.952 million km. Phoebe orbits Saturn in a retrograde direction in a plane much closer to the ecliptic than to Saturn's equatorial plane. Phoebe [FEE-bee], one of the outer satellites of Saturn, was discovered by William H. Pickering from a photographic plate taken on the night of August 16, 1898 with a 24 ...



- TELECOM CABINET
- BRAND NEW ORIGINAL
- HIGH-EFFICIENCY

[Phoebe's Surface Reveals Clues to Its Origin](#)

Phoebe may be an icy interloper from the distant outer solar system which found itself captured by giant Saturn in its earliest, formative years. Final conclusions on Phoebe's origins await a combination of the results on Phoebe's surface structures, mass and composition gathered from all 11 instruments, which collected data during the flyby on June 11, 2004.

Phoebe Solar Farm

Phoebe Solar Project, Texas Phoebe solar project is a 315MW photovoltaic (PV) solar farm being developed in the Winkler Country of Texas, US. Construction on the \$397m project started in July 2018, while ...



Phoebe , Icy Surface, Orbit & Rings , Britannica

Phoebe, midsize irregular moon of Saturn, discovered by the American astronomer William Henry Pickering in 1899 on photographic plates and named for a Titan in Greek mythology. Roughly ...



Phoebe

Phoebe and Iapetus are the only major moons in the Saturnian system that do not orbit closely to the plane of Saturn's equator. Phoebe is roughly spherical and has a mean radius of about 66.2 miles (106.5 kilometers), about one-sixteenth the ...



[Did Phoebe Come from the Outer Solar System?](#)

Saturn's moon Phoebe might have arrived at the planet after a long journey from the outer Solar System, according to new research from NASA. When Cassini analyzed the heavily cratered moon in June

[HeliosPhoebe , Solar System Installers , UAE](#)

Solar System Installers HeliosPhoebe
HeliosPhoebe 6th Floor, Office No. 36, Al Fahad Plaza, Dubai Click to show company phone UAE Business Details Smaller Installations, 1MWp+ Installations UAE



Contact Us

For catalog requests, pricing, or partnerships, please visit:
<https://www.vdbconstruction.co.za>