

Photovoltaic C-shaped steel horizontal board installation





Overview

How a roofing PV system should be installed?

The roofing PV system shall be installed after being evaluated by construction experts or engineers and with official analysis results for the entire structure. It shall be proved capable of supporting extra weight of system racking structures and PV modules.

How to install PV modules in hot and humid environment?

PV modules install under hot and humid weather condition. PV modules installation site is under long-term humid environment such as water floating application. To reduce the risk of PID, on the modules DC connection site, it is recommended to connect the negative to ground.

What is tilt angle of PV module?

Tilt angle of PV modules refer to the included angle between module surface and horizontal ground. The module will obtain the maximum power output when directly facing the sunlight. Modules are preferred to be south-facing in the north hemisphere and north-facing in the south hemisphere.

Can PV modules produce DC current under sunlight?

PV modules can produce DC current under sunlight. Any contact of exposed metal at module's wiring parts may result in electrical shock or burn. Any contact of 30 V or larger DC Voltage can be fatal. In case of no connected load or external circuits, modules can still produce voltage.

Do PV modules appear potential induced degradation (PID)?

Modules may appear Potential Induced Degradation (PID) under the conditions below: PV modules install under hot and humid weather condition. PV modules installation site is under long-term humid environment such as water floating application.



Photovoltaic C-shaped steel horizontal board installation



Solar Panels Vertical Or Horizontal (Which ...

With the vertical orientation, you can install two rows of six solar panels because they fit in a compact area. Horizontal panels take up more space, so you'll most likely need to make three rows of four panels to get 12 on your ...

C Steel Ground Mounting System,solar pole,Steel Mounting ...

This system utilizes C-shaped steel poles that are anchored into the ground using concrete foundations. The poles are then connected to crossbeams and rails, which ...



10 degree ballast of 61 Kg for photovoltaic systems

The Sun Ballast multiple assembly system is a basic system designed to cope with problems of overall dimensions, bad exposure and space.. An array of three panels eliminates the problem of shadowing that steals space and allows the ...

Photovoltaic Structures Using High-Durability Steel

Photovoltaic Structures Using High-Durability Steel Sun-Hee Kim 1, Seung-Cheol Baek 2, Ki-Bong Choi 1 and Sung-Jin Park 3, * 1 Department of Architectural Engineering, Gachon ...



Nominal Capacity
280Ah
Nominal Energy
50kW/100kWh
IP Grade
IP54



Design and Installation of 500-kW Floating ...

Countries around the world are expanding their investment in the new and renewable energy industry for strengthening energy security, improving air pollution, responding to climate change, and tackling energy ...

C-Channel Stainless Steel , James Dunkerley Steels

C-Shaped Channels C-channel steel is a shape of steel section with a C-shaped cross-section, given by a vertical web and two horizontal parallel flanges that extend to only one side of the ...



STORAGE AND UNPACKING INSTRUCTION OF PHOTOVOLTAIC ...

horizontal straps on the wooden N-shaped protectors and then remove the wooden N-shaped protectors. 4. Two persons hold the modules to prevent them from tipping over. The other ...





Photovoltaic Structures Using High-Durability Steel

A solar installation site is necessary for constructing a photovoltaic power plant and generating solar power. Therefore, floating photovoltaic power generation has been developed to ...



Design and Analysis of Steel Support Structures Used in Photovoltaic ...

In the photovoltaic (PV) solar power plant projects, PV solar panel (SP) support structure is one of the main elements and limited numerical studies exist on PVSP ground ...



Comparison of steel and aluminum structure for solar pv mounting

When it comes to selecting the material for photovoltaic (PV) support structures, it generally adopts Q235B steel and aluminum alloy extrusion profile AL6005-T5. Each material ...



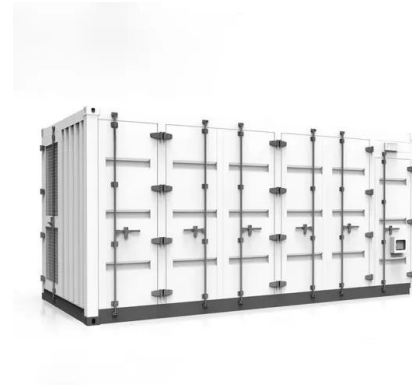
5 degree ballast with sail-shaped system for photovoltaic systems

This system, in addition to having the classic characteristics of our connect systems: high wind resistance, low roof loads, economical and fast to install, has the quality of preserving the ...



C Shaped Steel Ground PV System

C-shaped steel ground mounts, with their flexible installation systems, high load-bearing capacity and stability, shear resistance, anti-slip, and impact resistance characteristics, as well as easy ...



Wind Loading of Photovoltaic Panels Installed on Hip Roofs of

Such an installation may decrease the wind forces on the PV panels due to the pressure equalization effect as well as on the waterproofing membrane due to the shielding ...

Seismic and Power Generation Performance of U-Shaped Steel Connected PV

shows the installation details of the U-PV-SW (U-shaped steel connected PV integrated shear wall). Firstly, the U-shaped steel connectors were welded in the predesigned position of ...



5° Ballast with Sail system for photovoltaic plants

Sun Ballast 5° Sail system has been designed to take advantage of all the available coverage surface by optimizing the construction of the photovoltaic system.. This system allows to ...



C type steel_cold-formed steel-SHIWEI NEW ENERGY

Application of C- shaped steel and cold-formed steel in photovoltaic industry. In the photovoltaic industry, C- shaped steel and cold-formed steel are mainly used to manufacture photovoltaic ...

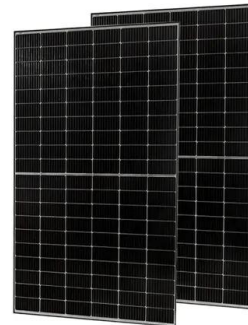


A Full Guide to Photovoltaic Array Design and ...

Under a PPA, the solar power producer builds, maintains, and operates a solar power system, while the consumer only pays for the electricity produced by the system. By entering into a PPA, the consumer benefits from ...

[Installing Horizontal Steel Siding](#)

Right now I'm considering horizontal 3 foot ribbed steel on full 2x8 on 24? 16? high walls with NO plywood sheeting on a 60x40 shop. 2 " foam sprayed on the inside. My biggest concern is hail ...



Hot-dip Galvanized Steel Photovoltaic Bracket

Hot-Dip Galvanized Steel photovoltaic bracket. The installation area of Hot-Dip Galvanized Steel photovoltaic bracket can be ground screw, concrete foundation, C-shaped steel pile or H ...



The maximum horizontal displacements of PV module and U-shaped ...

(b) The maximum horizontal displacements. from publication: Seismic and Power Generation Performance of U-Shaped Steel Connected PV-Shear Wall under Lateral Cyclic Loading , ...



(PDF) Impact of flat roof-integrated solar photovoltaic installation

PDF , On Jul 30, 2019, Xiaoyu Ju and others published Impact of flat roof-integrated solar photovoltaic installation mode on building fire safety , Find, read and cite all the research you ...

Contact Us

For catalog requests, pricing, or partnerships, please visit:
<https://www.vdbconstruction.co.za>