

# Photovoltaic grid-connected inverter selection





## Overview

---

What are grid-interactive solar PV inverters?

Grid-interactive solar PV inverters must satisfy the technical requirements of PV energy penetration posed by various country's rules and guidelines. Grid-connected PV systems enable consumers to contribute unused or excess electricity to the utility grid while using less power from the grid.

Do grid connected solar PV inverters increase penetration of solar power?

The different solar PV configurations, international/ national standards and grid codes for grid connected solar PV systems have been highlighted. The state-of-the-art features of multi-functional grid-connected solar PV inverters for increased penetration of solar PV power are examined.

Can a PV inverter integrate with the current power grid?

By using a reliable method, a cost-effective system has to be developed to integrate PV systems with the present power grid . Using next-generation semiconductor devices made of silicon carbide (SiC), efficiencies for PV inverters of over 99% are reported .

What are the different types of grid-connected PV inverter topologies?

In the literature, different types of grid-connected PV inverter topologies are available, both single-phase and three-phase, which are as follows: In large utility-scale PV power conversion systems, central inverters are utilised ranging from a few hundreds of kilowatts to a few megawatts.

Can inverters connect photovoltaic modules to a single-phase grid?

This review focuses on inverter technologies for connecting photovoltaic (PV) modules to a single-phase grid. The inverters are categorized into four classifica.

Can grid-connected PV inverters improve utility grid stability?

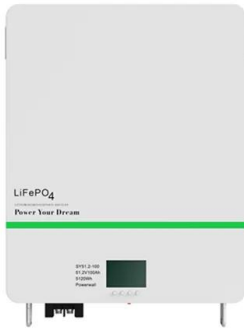


Grid-connected PV inverters have traditionally been thought as active power sources with an emphasis on maximizing power extraction from the PV modules. While maximizing power transfer remains a top priority, utility grid stability is now widely acknowledged to benefit from several auxiliary services that grid-connected PV inverters may offer.



## Photovoltaic grid-connected inverter selection

---



### Converter/Inverter Topologies for Standalone and Grid-Connected PV

It can also be inferred from Table 6 that the inverter with the highest efficiency is the grid-connected inverter topology, with a special mention offered to the grid-connected ...

### A Review of Multilevel Inverter Topologies for Grid ...

A solar photovoltaic system is one example of a grid-connected application using multilevel inverters (MLIs). In grid-connected PV systems, the inverter's design must be carefully considered to improve efficiency.



### Common-Mode Voltage Reduction Algorithm for ...

Model predictive control (MPC) has been proven to offer excellent model-based, highly dynamic control performance in grid converters. The increasingly higher power capacity of a PV inverter has led to the ...

### A topology review and comparative analysis on transformerless grid

Photovoltaic energy source growth is significant in power generation field. Moreover, grid connected inverters strengthen this growth. Development of transformerless ...



Sample Order  
UL/KC/CB/UN38.3/UL



### **Grid Connected Inverter for Solar Photovoltaic Power Generation**

The grid system is connected with a high performance single stage inverter system. The modified circuit does not convert the lowlevel photovoltaic array voltage into high voltage. The converter ...

### **(PDF) A Comprehensive Review on Grid Connected ...**

This review article presents a comprehensive review on the grid-connected PV systems. A wide spectrum of different classifications and configurations of grid-connected inverters is



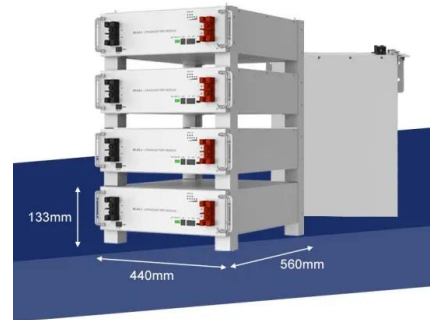
### **An Introduction to Inverters for Photovoltaic (PV) Applications ...**

Nowadays, the difference between standalone and grid-connected inverters is not as evident because many solar inverter are designed to work in both standalone or grid ...



### Grid-Connected Inverter System

Grid-connected photovoltaic inverters: Grid codes, topologies and control techniques. Valeria Boscaino, to transfer the properties of the electrical energy produced by the PV systems ...

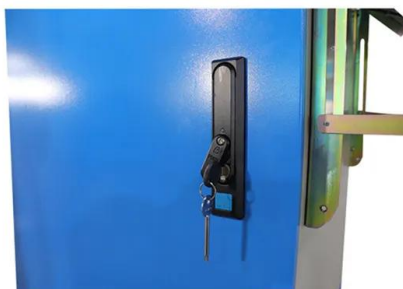


### **Grid Connected Photovoltaic Inverters , Encyclopedia MDPI**

Myrzik, J.M.; Calais, M. String and module integrated inverters for single-phase grid connected photovoltaic systems-a review. In Proceedings of the 2003 IEEE Bologna ...

### **Grid Connected PV System: Components, Advantages**

During a power failure, the on-grid inverter disconnects the photovoltaic system from the grid. Q. How much area is needed to install a 1kW grid-connected PV system on the ...



### **Control of Grid-Connected Inverter , SpringerLink**

Through suitable voltage vector selection, an optimum performance with better stability can be achieved. 2.2.2.3 Online Optimized Controllers. As discussed previously, a ...



## Solar Integration: Inverters and Grid Services Basics

Types of Inverters. There are several types of inverters that might be installed as part of a solar system. In a large-scale utility plant or mid-scale community solar project, every solar panel ...



51.2V 150AH, 7.68KWH



### Grid Connected Inverter Reference Design (Rev. D)

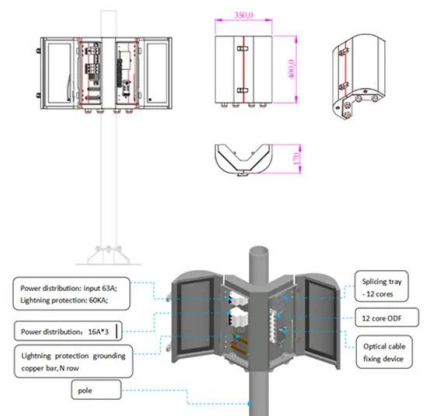
Grid connected inverters (GCI) are commonly used in applications such as photovoltaic inverters to generate a regulated AC current to feed into the grid. The control design of this type of ...

### Grid-Connected Solar PV System with Maximum Power Point ...

Integration of Solar PV and Battery Storage Using an Advanced Three-Phase Three-Level NPC Inverter with Proposed Topology under Unbalanced DC Capacitor Voltage ...



2MW / 5MWh Customizable



### GRID-CONNECTED SOLAR PV SYSTEMS Design guidelines for ...

GRID CONNECTED SOLAR PV SYSTEMS (No battery storage) Design guidelines for accredited installers Last update: January 2013 4 3.1.2 The system shall comply with the relevant ...



## Transformer Selection for Grid-Tied PV Systems

A step-down transformer for grid-tied PV. The recommended winding choice for this grid-tied step-down transformer is a delta connection on the grid-tied/primary side and a wye with a ground connection on the ...



## A Complete Guide on Solar Inverter Selection and Integration

Battery inverters are an essential component for off-grid solar energy systems, as well as grid-connected systems with energy storage for backup power and demand ...

## Modelling and Control of Grid-connected Solar Photovoltaic ...

At present, photovoltaic (PV) systems are taking a leading role as a solar-based renewable energy source (RES) because of their unique advantages. This trend is ...



## Converter/Inverter Topologies for Standalone and Grid-Connected PV

Selection of a suitable power electronic converter to meet the desired outcome for any sort of application is a major step. In the case of solar photovoltaic (PV) systems, the ...



## Two-step method for identifying photovoltaic grid-connected inverter

1 Introduction. Photovoltaic (PV) power generation, as a clean, renewable energy, has been in the stage of rapid development and large-scale application [1 - 4].Grid ...



## Nonlinear Model and Dynamic Behavior of Photovoltaic Grid-Connected

A photovoltaic grid-connected inverter is a strongly nonlinear system. A model predictive control method can improve control accuracy and dynamic performance. Methods to accurately model ...

## Grid-Connected Inverter Modeling and Control of ...

Assuming the initial DC-link voltage in a grid-connected inverter system is 400 V,  $R= 0.01 \Omega$ ,  $C = 0.1F$ , the first-time step  $i=1$ , a simulation time step  $\Delta t$  of 0.1 seconds, and constant grid voltage of 230 V use the ...



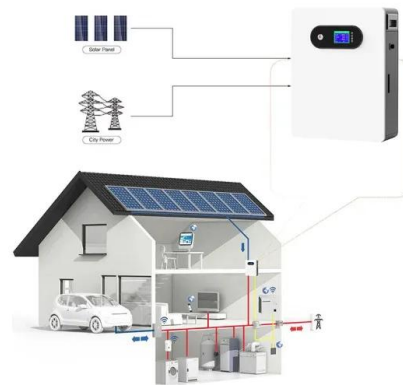
## [A Comprehensive Review on Grid Connected ...](#)

This review article presents a comprehensive review on the grid-connected PV systems. A wide spectrum of different classifications and configurations of grid-connected inverters is presented. Different multi-level ...



### PV array and inverter optimum sizing for grid ...

The PV inverter selection can highly affect large-scale PV plant optimal design due to its electrical characteristics such as maximum open-circuit voltage, input voltage, and inverter nominal power. The inverter in PV power plants grid ...



### GRID-CONNECTED PV SYSTEMS

7 , Design Guideline for Grid Connected PV Systems Prior to designing any Grid Connected PV system a designer shall visit the site and undertake/determine/obtain the following: 1. The ...

### Oct. 28th PV grid-connected Inverter Design & Performance

Sizing criteria for inverter selection Quality and performance of MPPT method Number of MPPT inputs Maximum input voltage (typically 1000V or 1500V) Large MPP voltage range High ...



**TAX FREE**

**Product Model**  
HJ-ESS-215A(100KW/215KWh)  
HJ-ESS-115A(50KW 115KWh)

**Dimensions**  
1600\*1280\*2200mm  
1600\*1200\*2000mm

**Rated Battery Capacity**  
215KWH/115KWH

**Battery Cooling Method**  
Air Cooled/Liquid Cooled

### Application of optimized photovoltaic grid-connected control ...

Photovoltaic power generation is a promising method for generating electricity with a wide range of applications and development potential. It primarily utilizes solar energy ...



## Contact Us

---

For catalog requests, pricing, or partnerships, please visit:  
<https://www.vdbconstruction.co.za>