

# **Photovoltaic inverter commissioning position**





## Overview

---

Why is commissioning a PV system important?

Commissioning is important not only for photovoltaic (PV) system performance, but also for longevity of equipment, safety, ROI, and warranties. PV system site survey using the Fluke irradiance meter with mounting bracket to validate panel performance.

What is a commercial PV & inverter information kit?

The purpose of this document is to organize and highlight details that are essential during the construction and commissioning phases of a Commercial PV system with SolarEdge inverters. For additional support contact your Commercial Program Manager. This information kit contains links to all documents relevant for your SolarEdge installation.

Do PV system commissioning standards require performance testing?

This best practice guide is PV System Commissioning or re-Commissioning Guide Supplement to characterize and maximize PV system performance. If a PV system is commissioned using industry standards, then it should produce as much energy as was expected, right?

No, PV industry commissioning standards do not call for performance testing.

What is a commissioning inverter?

Many incentive programs, certification entities and installation manuals use the term commissioning generically to describe a set of start-up or closeout procedures. In this informal context, a system installer might verify field connections and ac and dc voltage levels before “commissioning” an inverter.

What does commissioned PV mean?

**INTRODUCTION** Commissioning is the process of assuring that a PV plant is



safe, meets design objectives, and functions and produces energy in accordance with the owner's expectations. If a PV system is commissioned according to industry standards, then it must be performing as expected, right?

Not necessarily.

Do you need a third-party commissioning agent for a PV system?

Many financial backers of large PV systems require independent third-party commissioning to validate their investment. The commissioning agents responsible for generating this third-party report represent the system owner rather than the installer.



## Photovoltaic inverter commissioning position

---



### Power One Aurora PVI-3.8/4.6-I-OUTD Installation And

Page 42 Installation and operating manual Page 42 of 95 (PVI-3.8/4.6-I-OUTD Rev.: 1.5) The procedure for commissioning AURORA is as follows: 1) Set the inverter integrated DC ...

### HYBRID GENERATION 3 INVERTER INSTALLATION MANUAL

The Hybrid Inverter is a battery and PV inverter in one. It is bi-directional, meaning it can charge from the grid (AC coupled) and from solar (DC coupled). Drill 5 holes at the marked ...



### CPS Series Photovoltaic Grid Connection Inverter

This PV Inverter is a high performance and highly reliable product specifically designed for the North American Solar market. Instructions inside this user manual will help you solve most ...

### [Commissioning for PV Performance](#)

If a PV system is commissioned using industry standards, then it should produce as much energy as was expected, right? No, PV industry commissioning standards do not call for performance ...



[Solis S5-EH1P-L Hybrid Inverter](#)

5.2 Commissioning Procedure PV module used with inverter must have an IEC 61730 Class A rating. For brick walls, the position of the holes should be suitable for the expansion ...



**Hybrid 10KW PV Inverter**

continuous power from PV solar modules (solar panels), battery, and the utility. When MPP input voltage of PV modules is within acceptable range (see specification for the details), this ...



[User manual PV Grid-Connected Inverter](#)

PV Grid-Connected Inverter Shenzhen SOFARSOLAR Co.,Ltd. Product Model: Sofar 30~40KTL Document Version 1.0(2015.08.06) installation, commissioning, and maintenance of the ...





## PV Commissioning Form , PDF , Power Inverter , Photovoltaics

The document provides guidance on completing a PV Commissioning Form to ensure the safe commissioning of a photovoltaic system. It outlines sections for collecting basic project and ...

**INTEGRATED DESIGN**  
EASY TO TRANSPORT AND INSTALL,  
FLEXIBLE DEPLOYMENT



## A Guide to Photovoltaic Systems Installation: From

This conversion is done by an inverter. The inverter is a key component of the PV system and is usually installed near the main electrical panel. system to the electrical grid is a crucial step ...

### [User Manual 3KW/5KW PV Inverter](#)

Inverter unit PV connectors\* AC connector  
Mounting plate Software Manual USB cable CD  
\*Note: 1 set of PV connectors for 3KW inverter and two sets of PV connectors for 5KW inverter.  
3-2. ...



## Photovoltaic System Commissioning and Testing A ...

Photovoltaic systems normally use a maximum power point tracking (MPPT) technique to continuously deliver the highest possible power to the load when variations in the isolation and temperature occur, Photovoltaic (PV) generation ...



## Multiple String Inverters

IV - PV System main a.c. isolator V - Do not work on this equipment until it is isolated from both mains and on-site generation supplies REVISION Viridian Clearline PV Wiring Diagram - ...



## Maximizing Photovoltaic Efficiency: Commissioning a ...

You can calculate expected annual production by multiplying the 10-kW array x 6 peak sun hours x 365 days per year x 0.85 (15% derating due to power losses in wiring and inverter). This array should produce 18,615 kWh of energy for us ...

## [User manual PV Grid-Connected Inverter](#)

3.4 Determining the Installation Position 20 5.1 Safety Inspection before Commissioning 42 5.2 Start Inverter 42. EVVO 20000TLG23P~EVVO 33000TLG23P EVVO 20000TLG23P~EVVO ...



## [Fundamentals of the commissioning](#)

This paper presents the minimum aspects to consider for the commissioning of large-scale PV plants. This methodology has been successfully implemented in the commissioning of more ...



## Commercial Construction and Commissioning Guidelines North

installation, set to work, commissioning and handover of solar photovoltaic (PV) systems supplying permanent buildings and normally connected in parallel to the electricity distribution ...

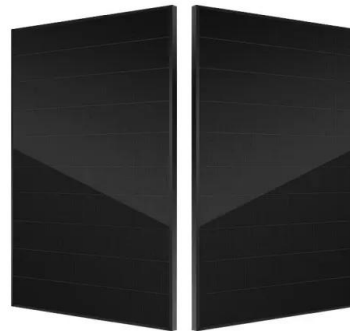


### [Photovoltaic Commissioning](#)

Photovoltaic Commissioning As businesses continue implementing photovoltaic (PV) technology, the safety, quality, and reliability of these systems are increasingly important. One way to ...

### PV Solar Power Plant Pre

AC and DC disconnects are in the open position. All the combiner fuse holders remain open. There is no voltage present anywhere the AC (or) DC disconnects. If disconnects are not visible during ...



### [Photovoltaics in Buildings](#)

2.3.3 Inverters 25 2.3.4 a.c. fault current protection 26 2.3.5 Metering 26 Appendix C PV commissioning test sheets 47 Further reading 51 position only Main Consumer Unit d.c. ...



## HYBRID GENERATION 2 INVERTER INSTALLATION MANUAL

The Hybrid Inverter is a battery and PV inverter in one. It is bi-directional, meaning it can charge from the grid and discharge to the load/grid (AC coupled), and from Solar (DC coupled). ...



### Commissioning Procedure , AE 868: Commercial Solar Electric ...

After the installation of any PV system is completed and the inspection is done, the system will be ready to be plugged to the grid to transfer energy. That process is referred to as ...

### Ingeteam has been awarded the inverter supply and commissioning ...

The Mula project (Murcia) has an installed power capacity of 500 MWp. This contract involves the supply of 238 PV inverters and the work to unload, position, install, ...



### Best Practices for Operation and Maintenance of Photovoltaic ...

(SuNLaMP) PV O& M Best Practices Working Group . Suggested Citation National Renewable Energy Laboratory, Sandia National Laboratory, SunSpec Alliance, and the SunShot National ...



DOMESTIC SOLAR PHOTOVOLTAIC

Micro-Inverter Inverter which has one or two solar PV modules connected to it, typically installed at the back of the solar PV modules. Module The Solar PV panel including all solar PV cells, ...



**CPS SCA-T Series Grid-tied PV Inverter CPS SCA7-10KTL**

PV inverter cannot start generate power. b. Follow the procedures of commissioning described in the user manual when commissioning the PV inverter. c. Do not touch any other parts'surface ...

**X3-Series User Manual**

PV inverter cannot start generate power. b Follow the procedures of commissioning described in the user manual when commissioning. the PV inverter. c Do not touch any other parts surface ...



**HANDBOOK ON DESIGN, OPERATION AND MAINTENANCE OF SOLAR PHOTOVOLTAIC ...**

2.2 PV Modules 3 2.3 Inverters 3 2.4 Power Optimisers 4 2.5 Surge Arresters 4 2.6 DC Isolating Switches 4 enhance the safety and system performance of the solar PV system installations ...



## PV Commissioning Tips and Best Practices

We then share some post-construction commissioning tips to help you avoid common issues. These concepts and procedures will leave you better prepared, regardless of whether your ...

**INTEGRATED DESIGN**  
EASY TO TRANSPORT AND INSTALL,  
FLEXIBLE DEPLOYMENT

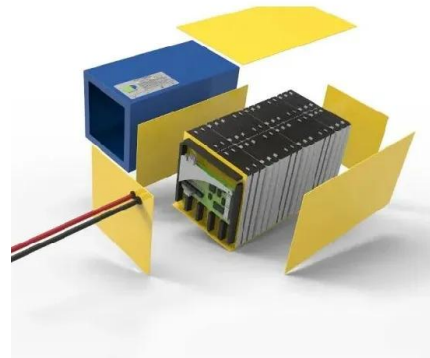


## Photovoltaic System Commissioning and Testing

2 PV System Fundamentals 5 2.1 PV Module Performance 5 2.1.1 Response to Irradiance 7 2.1.2 Response to Temperature 8 2.1.3 Rating Conditions 9 2.1.4 PV Arrays 10 2.2 Types of PV ...

### Inverter-Based DER Commissioning Testing Procedure

1. Close the Utility PV AC Disconnect Switch. 2. Close AC inverter circuit breakers in switchboard if applicable. 3. Close disconnect on DC Combiner Boxes as applicable. 4. Verify each inverter ...



## Contact Us

For catalog requests, pricing, or partnerships, please visit:  
<https://www.vdbconstruction.co.za>