

Photovoltaic panel edge profile





Overview

HD satellite imagery, AI-assisted 3D modeling and roof detection give you a clear and exact picture of the rooftop, so you can show your customer an accurate representation of what their roof will look like.

Automatic population of the rooftop using an irradiance map and shading analysis optimum placement of the solar panels, so you can deliver the best possible layout to your customer.

Get the most out of the solar system with automatic electrical design calculation providing you with the best recommendation for highly.

Smart Energy Home Ecosystem Get insight into potential household electricity savings when adding SolarEdge smart home devices to your.

Generate accurate sales proposals, ensuring your customers get the full picture on the spot. With energy simulation, financial.

Why do solar panels need anodized aluminum profiles?

Because the panel frame is exposed to the natural environment, it has high requirements for corrosion resistance. Chalco provides anodized aluminum profiles to further enhance the corrosion resistance of solar aluminum alloy frames.

Does enhanced image improve the accuracy of a PV panel detection model?

The enhanced image can obtain better visual effects, which is helpful for the manual labeling of the dataset during the PV panel detection, thereby indirectly improving the accuracy of the detection model. Moreover, the accuracy of the model is higher while using the IHFC-enhanced dataset for detection. Liao, K.C., Lu, J.H.:

Is aluminum a good material for solar panels?

With its advantages of light weight, high strength, corrosion resistance and durability, aluminum is widely used in building solar panel frames and photovoltaic supports. Research shows that aluminum is the most widely used



material in solar photovoltaic (PV) applications, accounting for more than 85% of most solar PV modules.

Is AP a good method for detecting photovoltaic panels?

Compared with using the original dataset, the AP, precision and recall increased by 12.4%, 13.6% and 11%, respectively. It has a good detection effect and basically solves the phenomenon of missed detection of photovoltaic panels caused by unclear boundary contours.

Can infrared image enhancement be used to detect PV panels?

As can be seen from the table, when the model uses the IHFC-enhanced dataset, the F1-value increased by 12%, indicating that the dataset is more suitable for the detection of PV panels. This paper proposes an infrared image enhancement for PV panels based on improved homomorphic filtering and CLAHE.

Which materials are used in solar PV?

Research shows that aluminum is the most widely used material in solar photovoltaic (PV) applications, accounting for more than 85% of most solar PV modules. Products conform to CEE AAMA, GB, BS, En; CE, DNV, ISO9001 certifications and can provide the TUV and other certifications. Welcome contact



Photovoltaic panel edge profile



Solar Photovoltaic Systems: Integrated Solutions from ...

Extruded aluminum profile for solar panel frame
T-profile: capability to offer both support and stability. L-profile: providing edge protection for panels. U-channel: used for cable management in panel system, ensuring efficient installation.

Metal Roof Solar Mounts -Solar Panel Roof

...

Attach solar panels & rails directly to standing seam metal roofs without drilling using S-5!'s PVKit 2.0. Save up to 50% on material cost & installation time! For use on standing seam profiles. Install the first row of S-5! clamps or ...



Why Choose SolarEdge Smart Solar Modules , SolarEdge

Advanced N-type TOPCon technology, designed to provide greater module efficiency, high power, quality, and high-level reliability. Bifaciality-harvest more from tilted roofs, with an expected gain of +2%-4%*. High durability to extreme ...

Solar Panel Frames and Their Role in PV Production

How solar panel frame impacts PV manufacturing and helps to maintain the quality of solar panels. Maintain & produce quality solar panel frame. The operator checks ...



[SolarGain® Solar Panel Sealants](#)

SolarGain® Edge Sealant is a desiccated butyl/desiccated polyisobutylene (PIB) solar panel sealant designed for use in a wide variety of photovoltaic (PV) modules. Trusted by PV module manufacturers for more ...



**Smart Solar Panel Modules for Homes ,
SolarEdge Australia**

Serial numbers are easily scanned from the front of the panel for faster mapping; Streamlined logistics with fewer parts to order; Built in safety with Safe DC, automatic rapid shutdown, ...



**Auto Edge Taping Machine , Solar Module
Machine , Horad**

Auto Trimming Machine The trimming machine can adapt to different sizes and shapes of panels and has a series of merits like high trimming quality, precision and speed, low noise and easy ...





Solar PV for Flat Roofs Design Considerations

In the UK, solar photovoltaic (PV) is a popular renewable energy and its deployment is rising rapidly across the globe. With recent fluctuations in energy markets and carbon reductions ...



M10 Solar Photovoltaic Panels

Sleek, low-profile integrated solar that replaces the roof covering for an improved aesthetic and for simple roof maintenance, now at similar cost to above-roof panels. Simple, beautiful, durable.

...

Solar Panel Fixing Options

An in-roof solar panel system sits on top of the roofs battens and is then tiled or slated around. It is possible to create a whole roof out of solar panels using an in-roof system. Making the ...



Solar Panel Brackets: The Ultimate Guide, types and ...

In conclusion, solar panel brackets are an essential component of a solar panel system. They provide a secure and reliable mounting solution for solar panels, while also helping to optimize the performance of the system. ...



LABC Guide to retrofitting solar panels

The absolute minimum acceptable edge distance is 4x screw diameter and the minimum screw spacing is 7x screw diameter. The installer of caused by evacuated tubes which have a ...



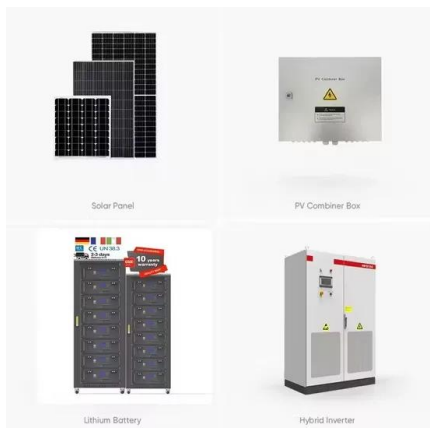
pv module clearances from roof edge , on ElectriciansForums

Hi Not sure if you found the answer but in the publication Planning And Installation Photovoltaic System 2nd edition, P276 7.2.1 it states" in order to reduce the wind ...



How close to the edge of your roof can your solar ...

In the past I've written about solar panel clamping zones which determine where, on a solar panel's edge, you can place the clamps that attach the modules to their mounting rails. What I didn't do was go into just where on ...



Solar Panel Building Regulations and SAP calculations, UK Guide

Solar Panel Building Regulations and SAP calculations, UK Guide. An increasing number of people are investing in solar energy. More and more homes are having ...



Solar PV Analysis of Dubai, United Arab Emirates

The location in Dubai, United Arab Emirates (latitude: 25.2633, longitude: 55.3087) is highly suitable for generating solar power due to its consistently high average daily solar irradiance

...



Analysis of mechanical stress and structural deformation on a solar

Solar photovoltaic structures are affected by many kinds of loads such as static loads and wind loads. Static loads takes place when physical loads like weight or force put into ...



200kWh Battery Cluster

Contour(TM) Trim

Aesthetic Arrays, Sleeker All Around. IronRidge Contour ® Trim elevates the look of any solar array by providing a sleek trim (or skirt) across the south edge or around the perimeter to hide

...



Solar PV Mounting Systems

The mounts will support the solar panel at the optimum height above the surface to enable ventilation from underneath, ensuring the solar panel functions as efficiently as possible. ...



Trapezoidal Solar Mounting System

The lightweight, anodized aluminium U-Support bracket with EPDM base seal is just 20mm wide which makes it suitable for all Trapezoidal sheet profiles. It replaces the need for rail avoiding ...



Determining Module Inter-Row Spacing , Greentech ...

When designing a PV system that is tilted or ground mounted, determining the appropriate spacing between each row can be troublesome or a downright migraine in the making. However, it is essential to do it right the first time to ...

Aluminum Solar Panel Frame

Solar panel aluminum frame is also called solar panel frame, It is the most important element in assembling for PV solar Modular. Wellste Aluminum has manufactured and supplied solar ...



wind design for low-profile solar photovoltaic

The minimum design wind force based on a wind tunnel study for roof mounted solar panel systems need not comply with the August 2012 Page 15 STRUCTURAL ENGINEERS ...



Hot Applied Solar Panel Edge Sealant

Hot Applied Solar Panel Edge Sealant *Exact equipment configuration will vary and depend on factors such as rate of output, length and size of hoses, bead size desired, and container ...



348569B Trueseal Hot applied solar edge sealant (English)

Hot applied solar panel edge sealant *Exact equipment configuration will vary and depend on factors such as rate of output, length and size of hoses, bead size desired, and container ...

Contact Us

For catalog requests, pricing, or partnerships, please visit:
<https://www.vdbconstruction.co.za>