

# Photovoltaic panel grid lines





## Overview

---

What is a grid connected PV system?

Grid connected PV systems always have a connection to the public electricity grid via a suitable inverter because a photovoltaic panel or array (multiple PV panels) only deliver DC power. As well as the solar panels, the additional components that make up a grid connected PV system compared to a stand alone PV system are:.

Why should a solar PV system be connected to the grid?

For financial benefit. Connecting your solar PV system to the grid allows you to take advantage of the FIT, which gives you a fixed amount of money for each kWh of electricity you generate. On top of these payments for energy generation, you also receive a sum of money for feeding any surplus energy into the grid.

How do I connect solar panels to the grid?

To connect solar panels to the grid, you need to install a bi-directional meter on your home. This allows energy produced by your solar panels to be fed into the grid when you're not using it, and for you to draw energy back from the grid when you need it.

How does a grid connected solar system work?

A grid-tied solar system has a special inverter that can receive power from the grid or send grid-quality AC power to the utility grid when there is an excess of energy from the solar system. Figure. Grid-Connected Solar PV System Block Diagram In addition, the utility company can produce power from solar farms and send power to the grid directly.

What are the advantages and disadvantages of a grid connected PV system?

The main advantage of a grid connected PV system is its simplicity, relatively low operating and maintenance costs as well as reduced electricity bills. The



disadvantage however is that a sufficient number of solar panels need to be installed to generate the required amount of excess power.

What is an on-grid Solar System?

Often referred to as a grid-tie or grid-connected system, an on-grid solar system is a system that is connected to the utility grid. It allows your home to use the power generated by your solar panels, as well as the power supplied by the grid. This means even on cloudy days or at night, you will always have a reliable power source.



## Photovoltaic panel grid lines

---



### Solar Systems Integration Basics , Department of ...

The transmission grid is the network of high-voltage power lines that carry electricity from centralized generation sources like large power plants. These high voltages allow power to be transported long distances without excessive loss. ...

### Solar panel

Solar array mounted on a rooftop. A solar panel is a device that converts sunlight into electricity by using photovoltaic (PV) cells. PV cells are made of materials that produce excited electrons ...



### How Does Solar Power Feed Back Into The Grid?

When interacting with the grid, solar power systems play a key role in supplying renewable electricity to homes and businesses. Solar panels are at the heart of this system, ...

### How Do Solar Panels Work? Diagram & Step by Step

Solar panels operate on a principle known as the photovoltaic (PV) effect. When sunlight hits a solar cell, it knocks electrons loose from their atoms, generating a flow of ...



### How do Solar Panels Work? - Working of Photovoltaic (PV) Systems

When panels produce excess solar power, the net metering allows it to transport to the utility grid, rewarding energy credit in exchange. It is where the output of the solar ...

### PV Cells 101: A Primer on the Solar Photovoltaic Cell

Then the current flows through metal contacts--the grid-like lines on a solar cell--before it travels to an inverter. The inverter converts the direct current (DC) to an ...



### An overview of solar power (PV systems) integration into electricity

Solar-grid integration is a network allowing substantial penetration of Photovoltaic (PV) power into the national utility grid. This is an important technology as the ...



## Solar panel wiring basics: How to wire solar panels

To have a functional solar PV system, you need to wire the panels together to create an electrical circuit through which current will flow, and you also need to wire the panels to the inverter that will convert the DC power produced by the ...



## 60 MW grid tied solar power plant with 115 kV/34.5 kV substation

A solar (PV) plant consisting of arrays will output power to a grid-tied power substation. 60 MW grid tied solar power plant with an attached 115kV/34.5 kV substation ...

## How to Connect Solar Panels to the Grid: A Step-by-Step Guide

Methods to Connect Solar Panels to the Grid. There are two main methods used in on-grid solar system wiring diagrams to connect solar panels to the grid. Load-Side ...



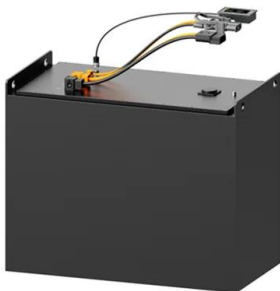
## Solar Panel Wiring Basics: Complete Guide & Tips to Wire a PV ...

Connecting a PV connector to your PV wire. Most solar panels come with pre-installed MC4 connectors, which will allow you to interlock solar panels between them. For the ...



### A Full Guide to Photovoltaic Panel Installation and ...

This DC power is then converted into alternating current (AC) power by an inverter, which can be utilized by the electrical systems of homes, businesses, or fed into the electrical grid. Types of Photovoltaic Panels. While ...



### Solar power , Your questions answered , National Grid ...

Agrivoltaics is an innovative approach that enables solar energy generation and agricultural practices. Growing crops underneath solar PV panels has proven to have many benefits. The raised solar panels can shield plants ...

### How Solar Power And The Grid Work Together

Thus, the grid doesn't experience massive spikes in demand because solar energy generation is available from grid-tied panels. Solar Power Reduces Grid Stress. When ...



### PV Interconnection: Load-Side vs. Line-Side

Solar installers and professionals must understand permitting and compliance policies when interconnecting a photovoltaic energy installation to the grid. This article provides insight into ...



### Understanding your solar PV system and maximising the benefits

3 Description of your Solar PV system Figure 1 - Diagram showing typical components of a solar PV system The main components of a solar photovoltaic (PV) system are: Solar PV panels - ...



### [Solar Energy Calculator and Mapping Tool](#)

o Photovoltaic System Lifespan: This is the expected lifespan of the photovoltaic system in years. This is used to calculate the effective cost of electricity for the system. If the photovoltaic ...

### [How Do Solar Panels Connect To The Grid?](#)

Solar panels connect to the power grid, which is a complex network that receives electricity from various sources and distributes it to customers through generators, transformers, and power ...



### Photovoltaic panels: operation and electrical production

Example calculation: How many solar panels do I need for a 150m 2 house ?. The number of photovoltaic panels you need to supply a 1,500-square-foot home with ...





## How to wire solar panels , Essentra Components UK

On-grid solar panel wiring diagram. In this PV system wiring diagram, the panels are series wired. On-grid systems need DC and AC disconnects in case power has to be shut ...



## A Complete Guide to Solar Automatic Transfer Switch

A grid-tie solar transfer switch is specifically used with a grid-tied solar power system. That means it allows your system to draw power from the grid when necessary, such as during bad ...

## How to connect a PV solar system to the utility grid

The purpose of this article is to give you a basic understanding of the concepts and rules for connecting a solar panel system to the utility grid and the household electrical box or meter. The utility connection for a PV solar system is ...



## [Grid-Connected Solar Photovoltaic \(PV\) System](#)

Most PV systems are grid-tied systems that work in conjunction with the power supplied by the electric company. A grid-tied solar system has a special inverter that can receive power from ...



## The Complete Guide to Solar Panel Wiring Diagrams

However, many grid-tied and off-grid residential solar power systems require high voltage, which can't be achieved by wiring in PV modules in parallel. That's the most fundamental difference between the result of wiring ...



## Solar explained Photovoltaics and electricity

By the late 1970s, PV panels were providing electricity in remote, or off-grid, locations that did not have electric power lines. Since 2004, most PV systems in the United ...

## Grid Connected PV System Connects PV Panels to the Grid

Grid Connected PV System Connecting your Solar System to the Grid. A grid connected PV system is one where the photovoltaic panels or array are connected to the utility grid through a ...



## Photovoltaic Basics (Part 1): Know Your PV Panels for Maximum ...

To harness solar power effectively, one must understand photovoltaic technologies and system components. In a photovoltaic panel, electrical energy is obtained ...



## Solar power , Your questions answered , National Grid ...

In order for homes and businesses to use cleaner, greener energy, more renewables - such as solar power and wind power - will need to be connected to the electricity grid. To do this, we will need to upgrade the ...



## One-Line Diagram Symbols (With Table) , Solar Plan Sets LLC

A capacitor is used in the system for storing electric charge. It's represented by two parallel lines, one of which is curved. 29. Grid Interconnection Point. The grid interconnection point is where ...

## [Single Line Diagram \(SLD\) of Solar Power Plant](#)

Importance of Single Line Diagrams (SLD) in Solar Power Plants. For the purpose of designing, building, and running solar power plants, a single-line diagram (SLD) is ...

### GRADE A BATTERY

LiFePO4 battery will not burn when overcharged, over discharged, overcurrent or short circuited and can withstand high temperatures without decomposition.



## Contact Us

For catalog requests, pricing, or partnerships, please visit:  
<https://www.vdbconstruction.co.za>